

Harvie Ranching • Remitall West
and Friends

Production Sale

Saturday, October 9, 2010

1:00 p.m. Olds, Alberta, Canada



WELCOME

Welcome Fellow Hereford Breeders,

On behalf of Harvie Ranching, Remitall West, and friends, we are pleased to invite you to our annual production sale. We will be hosting the event at the new Remitall West facilities. This is the same sale barn that hosted the record selling Remitall Super Duty for \$270,000. We are excited to see our fellow breeders again and hope you can join us on October 9th, 2010 at 1:00 p.m. for the sale.

This year's sale features an extraordinary set of Hereford herd sire prospects. These 7 young herdsire prospects have the genetics, phenotype, and appeal to support the strong upward progression of the Hereford industry. Remitall has always been known for raising breed changing herd sires that have helped to revolutionize the Hereford breed, and this group of bull calves is no different. Harvie Ranching's bull calves are sired by some of the highest selling outcross bulls in North America. If you are looking for a new herdsire, this is the place to get a bull that will take your program to the next level.

The females in the sale are right out of the heart of the herd. The heifer calves will go out, compete in the show ring, and then mature into great cows. The bred females are mated to some of the most exciting herdsires in the breed.

WOW! The flush opportunities in the sale are second to none, with Harvie Ranching offering the right to flush Harvie Ms Firefly 51F, the dam to last year's high selling bull, Harvie Taylor Made, who sold for a stunning \$80,500 for a 1/3 interest. The embryo packages are genetically packed with unique outcross genetics.

We are having a pre-sale social at Remitall West on Friday night before the sale, and we would like to invite everyone there for supper and cocktails. The cattle will be on display all day on October 8 and the morning of the 9th. If you can't make the sale feel free to contact any of the sale consignors to ask them about their sale features. The sale will also be broadcast live online at www.liveauctions.tv.

Regards,

HARVIE RANCHING, REMITALL WEST, OVHF & SIX SOUTH ACRES, LTD.



THE LATIMERS

*Bryan, Annette, Emily, Zachary
& Isaac*

REMITALL WEST
Box 16, Site 2, RR #4
Olds, Alberta T4H 1T8
home: (403) 556-2960
cell: (403) 556-0301
fax: (403) 556-3160
email: ablatimer@xplornet.ca
www.remitallwest.com



THE HARVIES

*Ian, Marlene, Scott, Cole, Jill,
Will, Eric & Sheyla*

HARVIE RANCHING
RR #2
Olds, Alberta T4H 1P3
office: (403) 335-4180
cell (Ian): (403) 507-3886
cell (Scott): (403) 586-4278
cell (Cole): (403) 994-1314
fax: (403) 335-3119
email: harvieranch@xplornet.com
www.harvieranching.com



THE MCNEELYS

Frank & Andree

OVHF
Box 8
Avonlea, Saskatchewan S0H 0C0
home: (306) 868-2201
cell (Frank): (306) 436-7908
email: amcneely@sasktel.net
www.ovhf.net

OVHF AB DIVISION
Jill Harvie - (403) 771-3502



THE GAILLARDS
Curtis, Kerry & Danika

SIX SOUTH ACRES, LTD.
Box 127
Milestone, Saskatchewan S0G 3L0
home: (306) 436-4420
email: sixsouthacres@sasktel.net

GENERAL SALE INFORMATION

Time & Place:

1:00 p.m., Saturday, October 9th, 2010
Remitall West Sale Barn - West of Olds, Alberta on
Hwy 27 to Range Road 20 and 3 miles south. East
side of road. Sale Barn phone # is (403) 556-2960.

Hotel Accommodations:

Ramada Hotel, Olds - (403) 507-8349
*Rooms booked at a discounted rate under Harvie Ranching
Best Western Motel, Olds - (403) 556-5900
*Rooms booked at a discounted rate under Harvie Ranching
Sportsman Motel, Olds - (403) 556-3315
Siesta Motel, Olds - (403) 556-3374
Circle Five Motel, Olds - (403) 556-7755
Didsbury Country Inn, Didsbury - (403) 335-8088

Airports:

The Remitall West Sale Barn is located just 45
minutes north of the Calgary International Airport.
Olds also has a small aircraft Municipal Airport.

Cattle Viewing:

Cattle will be on display all day Friday, October 8,
2010 and Saturday, October 9, 2010.

Sale Staff:

Auctioneer:

Ryan Dorran, Didsbury, AB - (403) 507-6483

Ring service:

Rod McLeod, Balzac, AB - (403) 540-7986
Ben Brillhart, Hereford World - (406) 947-2222
Joe Rickabaugh, Hereford World - (816) 842-3757
Craig Flewelling, Olds, AB - (403) 224-2111

Livestock Insurance:

DJ Henderson & Assoc. - (403) 782-3888

Cattle Preparation:

Matt Goold - (307) 359-3363
Casey St. Blanc - (985) 789-2110

Sale Day Contacts:

Bryan Latimer - (403) 556-0301
Cole Harvie - (403) 994-1314
Scott Harvie - (403) 586-4278
Ian Harvie - (403) 507-3886
Jill Harvie - (403) 771-3502
Will Harvie - (403) 994-3825
Frank McNeely - (306) 436-7908
Kerry Gaillard - (306) 436-7861
Curtis Gaillard - (306) 436-7515

Please join us for Friday night's social, lunch prior to the sale & cocktails following the sale.

TERMS & CONDITIONS

Terms: The terms of the sale are cash or cheque, payable at par at the sale location unless satisfactory credit or invoicing arrangements have been made prior to the sale. The right of property shall not pass until after full settlement has been made.

Delivery: Consignors will assist with arranging delivery of cattle. Instructions for delivery must be given at time of settlement. No cattle will be released until after the conclusion of the sale. Each animal becomes the risk of the purchaser as soon as sold; therefore, buyers are urged to insure animals at full value.

Guarantee: The cattle will carry the guarantee as recommended by the Canadian Hereford Association. Harvie Ranching, Remitall West, OVHF & Six South Acres, Ltd. stand behind all animals sold in the sale. Any defects will be announced.

Frozen Embryos: Due to different management practices, technicians and other factors, there is no guarantee on the conception rate of any frozen embryos. It is guaranteed that the purchaser will receive the number of embryos purchased and that said embryos are the mating listed in this catalogue. Only number one and number 2 grade embryos were frozen and they have been stored at an accredited storage facility.

Announcements: Announcements made by the auctioneer on sale day supersede any printed material.

Liability: The owners, their employees, sale staff & representatives accept no liability for any accidents that may occur (although this is rare at a cattle sale) and persons who attend do so at their own risk.

Real-time viewing and bidding is available from www.liveauctions.tv.
Buyers must create an account at least 2 days prior to the sale. Contact
Jill Mader at 403-990-9187 or Brad Fahrmeier at 816-392-9241 if you
have questions or require assistance.

LiveAuctions.TV



REMITALL SLEEP EASY 68U

C02909655

February 03 2008

BW: 79 lbs

NGA 68U

MC RANGER 9615

REMITALL ROUTE 66 ET 346R

REMITALL CATALINA 24H

REMITALL PATRIOT ET 13P

REMITALL MARVEL ET 120S

REMITALL MARVEL EUDORA 125E

CIRCLE-D WRANGLER 832W

SBF ROYAL GYPSY

MM RSM STOCKMASTER 512

REMITALL CATALINA 139C

REMITALL OLYMPIAN ET 262L

REMITALL GINGER 23G

REMITALL KEYNOTE 20X

REMITALL ZE MARVEL 106Z

	CE	BW	WW	YW	MILK	TM	MCE	SC	CowWt	Stay	MPI	FMI	REA	Fat	Marb
EPD	-3.5	+3.5	+63.3	+91.7	+18.1	+49.8	+2.7	+1.1	+76.7	-1.7	+159.9	+140.6	+0.46	-0.001	+0.15

The high selling bull calf at \$38,000 in the 2008 Remitall Dispersal. Sleep Easy has met all our expectations for lowering birth without sacrificing growth. His calves show amazing muscle shape with a wonderful profile. This super young sire has the spread in his numbers to improve the breed. Semen available at \$50.00 per straw and \$100 per certificate. Min. order of 5 straws.



SHF WONDER M326 W18 ET

42991698

February 07 2009

W18

RHH MR FELT 3008

KCF BENNETT 3008 M326

KCF MISS 459 F284

MM RSM STOCKMASTER 512

SHF GOVERNESS 236G L37

SHF INTERSTATE D03 G80

FELTONS 517

RRH MS VICT 6191

FELTONS 459

KCF MISS X4 B156

MM STOCKMASTER 092

MM MISS MASTER 977

SHF INTERSTATE 20X D03

GK LADY BANNER 563T

	CE	BW	WW	YW	MILK	TM	MCE	SC	Fat	REA	Marb	\$BMI	\$CEZ	\$BII	\$CHB
EPD	+0.6	+3.4	+56.0	+88.0	+15.0	+43.0	+2.3	+1.5	-0.018	+0.38	0.29	+\$29	+\$17	+\$27	+\$32

The high selling bull at \$28,000 from the 2010 Sandhill Farms bull sale. One of the most admired bulls at the 2010 Denver Stock Show, where he was the lead off bull in Sandhill Farms Reserve Champion Pen. Semen available at \$100 per straw - no certificates required. Min. order of 10 straws.



HARVIE TAILOR MADE ET 7W

C02927239

January 28 2009

BW: 94 lbs

CVIH 7W

KAIRURU ABERDEEN 03 0047

HARVIE TRAVELER 69T

HARVIE PEARL 129P

HARVIE DEYNOTE 61D

HARVIE MISS FIREFLY 51F

HARVIE MISS NYLON 1Y

LEELANDS TRANSITION T7

KAIRURU PLUM T44

LEVELDALE KODIAK 23C ET 19K

EASTON 26Y IRON LADY 43A

REMITALL KEYNOTE 20X

MISS CRAIGIE TRUSTMARK 10Y

DURALTA 359S NYLON 16W

CHSF 4R MISS CHOICE 11U

	CE	BW	WW	YW	MILK	TM	MCE	SC	CowWt	Stay	MPI	FMI	REA	Fat	Marb
EPD	-1.3	+4.7	+52.0	+90.4	+17.0	+43.0	+0.1	+0.5	+41.9	-0.3			+0.35	+0.010	-0.04

The high selling bull at \$80,500 (1/3 interest) in the 2009 Harvie Production sale. One of the top young bulls currently in the Hereford breed. Tailor Made is admired for his stoutness, depth of body, eye appeal and extra pigmentation.

REMITALL ONLINE 122L

C02789138 February 13 2001 BW: 90 lbs
NGA 122L

REMITALL ACME 10A
REMITALL EMBRACER 8E
PLAIN LAKE BELLE 20X 117P 5B

MM RSM STOCKMASTER 512
REMITALL CATALINA 24H
REMITALL CATALINA 139C

MYRTLEWOOD SLEW 439
REMITALL MARY XMAS 60X
REMITALL KEYNOTE 20X
SRCL LEONARD BRIT 117P
MM STOCKMASTER 092
MM MISS MASTER 977
REMITALL OVER-DRIVE 114Z
REMITALL SHO-GAL 77Z



	CE	BW	WW	YW	MILK	TM	MCE	SC	CowWt	Stay	MPI	FMI	REA	Fat	Marb
EPD	+0.9	+5.0	+64.6	+111.5	+21.4	+53.7	+8.9	+1.4	+92.0	+0.1	+167.9	+200.8	+0.53	-0.034	+0.12

The most influential sire currently in the Hereford breed. Online was the 2001 CDN National Champion Bull and the 2002 & 2003 US Denver National Champion Bull. His progeny are highly sought after, with their limited availability, his progeny selling in this sale will make a great investment.

REMITALL SUPER DUTY 42S

C02881216 January 29 2006 BW: 100 lbs
NGA 42S

REMITALL OLYMPIAN ET 262L
REMITALL PATRIOT ET 13P
REMITALL GINGER 23G

FELTONS 517
REMITALL RITA 91H
REMITALL FLORAL RITA 102F

REMITALL GOVERNOR 236G
REMITALL CATALINA 24H
CIRCLE-D WRANGLER 832W
PLAIN LAKE BELLE 20X 117P 5B
FELTONS 403
F PRINCESS A80
REMITALL CASINO 12C
REMITALL RITA BELLE 97B



	CE	BW	WW	YW	MILK	TM	MCE	SC	CowWt	Stay	MPI	FMI	REA	Fat	Marb
EPD	-10.9	+8.3	+63.2	+106.1	+18.4	+50.0	+3.5	+1.7	+96.9	-2.7	+154.3	+131.4	+0.05	+0.017	+0.17

The top selling bull at \$270,000 in the 2008 Remitall Dispersal to Square D Herefords in SK. One of the most exciting bulls to ever come out of the Remitall program. Super Duty 42S was the 2006 and 2007 Agribition Reserve Grand Champion Bull. His progeny are special features of this sale.

REMITALL ROUTE 66 ET 346R

C02869151 May 10 2005 BW: 95 lbs
NGA 346R

CIRCLE-D WRANGLER 832W
MC RANGER 9615
SBF ROYAL GYPSY

MM RSM STOCKMASTER 512
REMITALL CATALINA 24H
REMITALL CATALINA 139C

BAR H L1 CHANCE 55S
CIRCLE D 193 SILHOUETTE 335S
BEARTOOTH NOMAD 421N
SBF RYL TRAMS AM 8118
MM STOCKMASTER 092
MM MISS MASTER 977
REMITALL OVER-DRIVE 114Z
REMITALL SHO-GAL 77Z



	CE	BW	WW	YW	MILK	TM	MCE	SC	CowWt	Stay	MPI	FMI	REA	Fat	Marb
EPD	-2.8	+3.7	+47.6	+69.9	+17.5	+41.3	+1.7	+0.8	+41.4	-1.4	+144.8	+145.1	+0.21	-0.026	+0.06

The 2007 CDN National Grand Champion Bull. A sire to moderate birth weights, add muscle shape and improve profile. His first daughters in production show excellent udder quality and are making wonderful young cows.

POWER, BALANCE, MUSCLE... LUGER HAS IT ALL!



LOT 1

1 REMITALL-WEST LUGER 53X

C02939385

April 02 2010

BW: 88 lbs

REM 53X

REMITALL MEDALLION 58M
REMITALL PRECISION 455P
 REMITALL CATALINA ET 69L

REMITALL SUPER DUTY 42S
SQUARE-D RITA 352U
 AMW COUNTRY GIRL 25M

REMITALL KOOTENAY 9K
 EASTON 20X DELLA 15E
 REMITALL GOVERNOR 236G
 REMITALL CATALINA 24H
 REMITALL PATRIOT ET 13P
 REMITALL RITA 91H
 MUDDY 3F JUBA 88G 803J
 TAT K707 COUNTRY GIRL 15F

Luger is a truly exciting prospect. One of the most powerful calves at this age we've raised for muscle shape, total body mass, length of body and eye appeal. A positive contributor in nine of his EPD categories. To have this much strength in a young calf with a moderate birth weight, a super pedigree and a natural calf from a two year old heifer pretty much sums up why we're so high on Luger. Selling half interest and half possession. Possession to begin after his show career.

	CE	BW	WW	YW	MILK	TM	MCE	SC	CowWt	Stay	MPI	FMI	REA	Fat	Marb
EPD	-2.5	+5.9	+47.7	+76.1	+16.1	+40.0	+1.1	+0.8	+51.8	-1.6		+122.4	+0.16	+0.005	+0.06



352U - Dam of Lot 1. A tremendous two year old daughter of Super Duty that we purchased as the high selling female in the 2009 Square D production sale.



455P- Sire of Lot 1. A great sire to moderate birth weights with calves that really perform once they hit the ground. Precision was a very valued walking bull at Remitall and is getting rave reviews from Square D, his new home.

SLEEP EASY SONS... THE NEXT STEP IN BUILDING FOR TOMMORROW!

2 REMITALL-WEST FULL VIEW 59X

C02939382

April 13 2010

BW: 78 lbs

REM 59X

REMITALL ROUTE 66 ET 346R

REMITALL SLEEP EASY 68U

REMITALL MARVEL ET 120S

REMITALL SUPER DUTY 42S

REMITALL CATALINA 58U

REMITALL CATALINA ET 380P

MC RANGER 9615

REMITALL CATALINA 24H

REMITALL PATRIOT ET 13P

REMITALL MARVEL EUDORA 125E

REMITALL PATRIOT ET 13P

REMITALL RITA 91H

REMITALL MEDALLION 58M

REMITALL CATALINA 24H

	CE	BW	WW	YW	MILK	TM	MCE	SC	CowWt	Stay	MPI	FMI	REA	Fat	Marb
EPD	-2.9	+3.7	+55.9	+86.1	+17.0	+44.9	+3.3	+1.1				+133.3	+0.28	+0.005	+0.15



68U - Sire of Lots 2 & 3. A low birth weight bull that is passing this trait on to his offspring. His calves have grown out exceptionally well, as you will see in this sale offering.



58U - Dam of Lot 2. A beautiful two year old daughter of Super Duty.



420T - Dam of Lot 3. A highly pigmented cow, including fully pigmented teats.

	CE	BW	WW	YW	MILK	TM	MCE	SC	CowWt	Stay	MPI	FMI	REA	Fat	Marb
EPD	-1.8	+4.4	+50.2	+76.2	+16.0	+41.1	+2.1	+0.8				+134.0	+0.35	-0.008	+0.05

Expresso is one of the most phenotypically ideal made calves you will find anywhere. His balance, smoothness, muscle shape and eye appeal are exceptional. This super prospect is line bred to the most famous of Remitall cow families - the Catalina's. Expresso carries a powerful REA with a positive marb. number and is positive for seven other traits. Selling half interest and half possession. Possession to start after his show career.

Full View offers tremendous breeding potential. A bona fide low birth weight calf that will be ideal to use on heifers. He has great shape, profile, balance and length of body. Full View has a super set of EPDs and is positive in eleven separate categories. A young calf with a lot of show potential and a pedigree that puts together a maternal masterpiece of the top Remitall cow families. Selling $\frac{3}{4}$ interest and full possession.

REMITALL WEST

3 REMITALL-WEST EXPRESSO 19X

C02939383

February 21 2010

BW: 90 lbs

REM 19X

REMITALL ROUTE 66 ET 346R

REMITALL SLEEP EASY 68U

REMITALL MARVEL ET 120S

MC RANGER 9615

REMITALL CATALINA 24H

REMITALL PATRIOT ET 13P

REMITALL MARVEL EUDORA 125E

REMITALL MEDALLION 58M

REMITALL LAGRD PLAYER ET 358P

REMITALL CATALINA 420T

REMITALL CATALINA 183P

REMITALL CATALINA 24H

REMITALL LANDSLIDE 161L

REMITALL CATALINA 375L



PEDIGREE, PROFILE, PREDICTABILITY!

LOT 4



4 **REMITALL-WEST CONSTRUCTOR 21X**
C02940960 February 22 2010 BW: 92 lbs
REM 21X

REMITALL EMBRACER 8E
REMITALL ONLINE 122L
REMITALL CATALINA 24H

REMITALL PATRIOT ET 13P
REMITALL RITA 13T
REMITALL RITA 246K

REMITALL ACME 10A
PLAIN LAKE BELLE 20X 117P 5B
MM RSM STOCKMASTER 512
REMITALL CATALINA 139C
REMITALL OLYMPIAN ET 262L
REMITALL GINGER 23G
REMITALL HERITAGE 89H
REMITALL EMPRESS RITA 66E

A great son of the legendary Online 122L. Constructor 21X carries stellar EPDs for growth, milk, and carcass traits. Maternally, this calf's pedigree is as good as it gets, combining on every line the most potent cow families the Remitall program produced. Constructor is phenotypically impressive. He has great extension through that front end, as well as having a lot of width of top and width of pins in an eye appealing profile. Selling $\frac{3}{4}$ interest and full possession.

	CE	BW	WW	YW	MILK	TM	MCE	SC	CowWt	Stay	MPI	FMI	REA	Fat	Marb
EPD	-3.4	+5.6	+64.8	+106.1	+20.5	+52.9	+4.9	+1.3	+91.8	-0.8		+173.3	+0.47	-0.017	+0.16



13T - Dam of Lot 4. A power daughter of two time CDN National Champion bull and record seller Patriot 13P. Udder quality and pigmentation, a super young cow that is one of our favourites.



122L - Sire of Lot 4. A national champion that sires national champions. A leading performance sire that sires daughters that milk, with udder quality.



REMITALL WEST'S SWEETHEART FEMALES - NEXT UP...!

SELLING CHOICE!! LOT 5A OR LOT 5B

5A REMITALL-WEST MARVEL 4X

C02940962

January 28 2010

BW: 75 lbs

REM 4X

REMITALL EMBRACER 8E

REMITALL ONLINE 122L

REMITALL CATALINA 24H

REMITALL PATRIOT ET 13P

REMITALL MARVEL ET 120S

REMITALL MARVEL EUDORA 125E

REMITALL ACME 10A

PLAIN LAKE BELLE 20X 117P 5B

MM RSM STOCKMASTER 512

REMITALL CATALINA 139C

REMITALL OLYMPIAN ET 262L

REMITALL GINGER 23G

REMITALL KEYNOTE 20X

REMITALL ZE MARVEL 106Z

An unique opportunity to get a hold of a real genetic gem and future donor cow. She is a maternal sister to the up and coming great young sire Sleep Easy 68U and is sired by breed legend Online 122L. Study this young heifer's data, it is in a class of its own. Moderation at birth combined with explosive growth, a sensational REA along with strong marbling. Phenotypically, this heifer flows together in a flawless and beautiful package. For those interested in showing, this heifer will be just what you're looking for. Selling your choice of either Lot 5A or 5B.

	CE	BW	WW	YW	MILK	TM	MCE	SC	CowWt	Stay	MPI	FMI	REA	Fat	Marb
EPD	-2.1	+3.4	+58.4	+95.6	+20.1	+49.3	+6.6	+1.2	+84.3	-0.4		+162.5	+0.46	-0.013	+0.17



LOT 5A



120S - Dam of Lot 5A. Also the dam of herd sire Remitall Sleep Easy 68U. Feature embryos on this special cow also sell as Lot 32.

5B REMITALL-WEST MARVEL 24X

C02940963

February 27 2010

BW: 87 lbs

REM 24X

REMITALL EMBRACER 8E

REMITALL ONLINE 122L

REMITALL CATALINA 24H

REMITALL PATRIOT ET 13P

REMITALL MARVEL ET 135S

REMITALL MARVEL EUDORA 125E

REMITALL ACME 10A

PLAIN LAKE BELLE 20X 117P 5B

MM RSM STOCKMASTER 512

REMITALL CATALINA 139C

REMITALL OLYMPIAN ET 262L

REMITALL GINGER 23G

REMITALL KEYNOTE 20X

REMITALL ZE MARVEL 106Z



135S - Dam of Lot 5B. The perfect udder for a beef cow.

	CE	BW	WW	YW	MILK	TM	MCE	SC	CowWt	Stay	MPI	FMI	REA	Fat	Marb
EPD	-3.3	+4.7	+61.8	+98.7	+20.1	+51.0	+6.0	+1.2				+161.7	+0.46	-0.012	+0.17



LOT 5B

This heifer has had just as many friends as Lot 5A and for good reason. Beautifully fronted and broody looking this young female has future donor cow written all over her. Looking at her data you can see the genetic documentation to back this up. Moderation at birth, with phenomenal numbers for growth, milk, REA, and marb. You can't go wrong with either heifer and neither can we, that's why we're offering you choice on these full sisters in blood. Selling your choice of either Lot 5A or 5B.

SPECIAL ONLINE DAUGHTERS

6 REMITALL-WEST DAINTY PET 56X

C02940955

April 07 2010

BW: 85 lbs

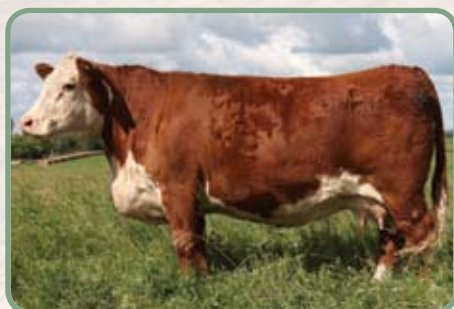
REM 56X

REMITALL EMBRACER 8E
REMITALL ONLINE 122L
REMITALL CATALINA 24H

REMITALL HOLLYWOOD 37H
REMITALL DAINTY PET 206M
REMITALL DAINTY PET 33F

REMITALL ACME 10A
PLAIN LAKE BELLE 20X 117P 5B
MM RSM STOCKMASTER 512
REMITALL CATALINA 139C
MM RSM STOCKMASTER 512
REMITALL SHARON ESTA 84E
REMITALL LEONARD 38L
REMITALL DAINTY PET 94D

	CE	BW	WW	YW	MILK	TM	MCE	SC	CowWt	Stay	MPI	FMI	REA	Fat	Marb
EPD	-0.6	+4.6	+55.7	+101.9	+8.5	+36.3	+4.8	+1.0	+71.8	-0.3		+167.1	+0.41	-0.005	+0.20



206M - Dam & Donor cow of Lot 6



122L - Sire of Lots 5A, 5B, 6 & 7

Fancy, fancy, fancy, this sharp looking April heifer will make a great show prospect, and as Online daughters have proven, a great momma cow too. Genetically, this Online daughter is a power house for birth with moderation, super performance and elite carcass traits.



7 REMITALL-WEST MARVEL 37X

C02940957

March 17 2010

BW: 92 lbs

REM 37X

REMITALL EMBRACER 8E
REMITALL ONLINE 122L
REMITALL CATALINA 24H

REMITALL HOLLYWOOD 37H
REMITALL MARVEL 346P
REMITALL MARVEL 72K

REMITALL ACME 10A
PLAIN LAKE BELLE 20X 117P 5B
MM RSM STOCKMASTER 512
REMITALL CATALINA 139C
MM RSM STOCKMASTER 512
REMITALL SHARON ESTA 84E
LLL NUFF SAID 45H
REMITALL MARVEL EMPRESS 50E

	CE	BW	WW	YW	MILK	TM	MCE	SC	CowWt	Stay	MPI	FMI	REA	Fat	Marb
EPD	-3.7	+6.5	+57.4	+102.7	+12.4	+41.1	+4.7	+1.1	+84.3	-0.9		+162.1	+0.47	-0.008	+0.13

A superb performance and carcass driven Online daughter, with a sweetheart of a profile. Her dam 346P is a massive bodied, easy fleshing, wonderful uddered cow. Direct young daughters of Online are rare to find and even harder to find for sale. This one, like great art, will get worth more with every passing day.



BEAUTIFUL SUPER DUTY DAUGHTERS THAT ARE FULL SISTERS IN BLOOD!

8 REMITALL-WEST POLLY 26X

C02941334 March 02 2010 BW: 83 lbs

REM 26X

REMITALL PATRIOT ET 13P
REMITALL SUPER DUTY 42S
 REMITALL RITA 91H

MM RSM STOCKMASTER 512
REMITALL POLLY 70H
 REMITALL POLLY ELSIE 44E

REMITALL OLYMPIAN ET 262L
 REMITALL GINGER 23G
 FELTONS 517
 REMITALL FLORAL RITA 102F
 MM STOCKMASTER 092
 MM MISS MASTER 977
 REMITALL BOOMER 46B
 REMITALL CLASSY POLLY 3C

A march Super Duty daughter that is just flat out good. A super eye appealing sweet fronted heifer with as much depth of body as you will find in a calf this age. This heifer will stand a little competition and then some. The first Super Duty daughters in production, as you can see in this catalogue, really have what it takes to raise a great one and in the end that's what makes you money.

	CE	BW	WW	YW	MILK	TM	MCE	SC	CowWt	Stay	MPI	FMI	REA	Fat	Marb
EPD	-4.8	+5.6	+52.7	+83.3	+15.6	+42.0	+3.3	+1.2	+64.0	-1.6		+123.3	+0.12	+0.012	+0.17



44E - Granddam of Lots 8 & 9

9 REMITALL-WEST POLLY 20X

C02941335 February 22 2010 BW: 96 lbs

REM 20X

REMITALL PATRIOT ET 13P
REMITALL SUPER DUTY 42S
 REMITALL RITA 91H

MM RSM STOCKMASTER 512
REMITALL POLLY 6J
 REMITALL POLLY ELSIE 44E

REMITALL OLYMPIAN ET 262L
 REMITALL GINGER 23G
 FELTONS 517
 REMITALL FLORAL RITA 102F
 MM STOCKMASTER 092
 MM MISS MASTER 977
 REMITALL BOOMER 46B
 REMITALL CLASSY POLLY 3C



6J - Dam of Lot 9. This deep bodied cow was a former Jr. show heifer project for Sara Latimer.

	CE	BW	WW	YW	MILK	TM	MCE	SC	CowWt	Stay	MPI	FMI	REA	Fat	Marb
EPD	-7.0	+7.3	+53.7	+86.6	+11.3	+38.1	+2.6	+1.2	+74.5	-1.2		+129.0	+0.11	+0.005	+0.14



A favourite of many, this Super Duty daughter personifies a sweet front end for the show ring with that hard to come by extra depth of body necessary to make an efficient cow. Full pigmentation makes this heifer a real nice addition to any herd or any Jr. project.

YOUNG SWEETHEARTS BY SUPER DUTY

10 REMITALL-WEST CATALINA 74X

C02941339

May 06 2010

BW: 93 lbs

REM 74X

REMITALL PATRIOT ET 13P
REMITALL SUPER DUTY 42S
REMITALL RITA 91H

BNC 122L OMNI 128N
REMITALL CATALINA 39T
REMITALL CATALINA 105L

REMITALL OLYMPIAN ET 262L
REMITALL GINGER 23G
FELTONS 517
REMITALL FLORAL RITA 102F
REMITALL ONLINE 122L
CUIL-AITINN GINGER 832W 3K
LLL NUFF SAID 45H
REMITALL JEAN 122J

An awesome May born Super Duty daughter that is a real show prospect. Coming from the renowned Catalina cow family ensures she will be productive as well as valuable. Her EPDs show that she is a powerhouse for performance, milk, and carcass.

	CE	BW	WW	YW	MILK	TM	MCE	SC	CowWt	Stay	MPI	FMI	REA	Fat	Marb
EPD	-6.4	+7.1	+54.6	+97.1	+21.1	+48.4	+2.8	+1.3	+67.8	-1.5		+145.6	+0.23	-0.003	+0.06



105L - Granddam of Lot 10



42S - Sire of Lots 8, 9, 10 & 11



11 REMITALL-WEST POLLY 70X

C02941337

April 22 2010

BW: 90 lbs

REM 70X

REMITALL PATRIOT ET 13P
REMITALL SUPER DUTY 42S
REMITALL RITA 91H

REMITALL LANDSLIDE 161L
REMITALL POLLY 262N
REMITALL CHARME POLLY 163C

REMITALL OLYMPIAN ET 262L
REMITALL GINGER 23G
FELTONS 517
REMITALL FLORAL RITA 102F
LLL NUFF SAID 45H
REMITALL EMPRESS RITA 66E
REMITALL OVER-DRIVE 114Z
REMITALL XYLONA 143X

	CE	BW	WW	YW	MILK	TM	MCE	SC	CowWt	Stay	MPI	FMI	REA	Fat	Marb
EPD	-5.8	+6.2	+45.6	+80.5	+13.9	+36.7	+2.7	+1.1	+52.3	-1.8		+129.2	+0.17	-0.002	+0.03

A stylish, extremely well balanced, sweet fronted, late April born heifer. Super Duty daughters are making wonderful productive cows and this heifer will be no exception. Take a good look here, this female will make a fancy yearling.



REMITALL WEST

GLAMOUROUS GIRLS BY SLEEP EASY!

12 REMITALL-WEST BELLE 11X

C02939370 February 09 2010 BW: 71 lbs

REM 11X

REMITALL ROUTE 66 ET 346R
REMITALL SLEEP EASY 68U
REMITALL MARVEL ET 120S

REMITALL FIRST CLASS ET 113R
REMITALL BELLE 132U
REMITALL BELLE 160R

MC RANGER 9615
REMITALL CATALINA 24H
REMITALL PATRIOT ET 13P
REMITALL MARVEL EUDORA 125E
REMITALL OLYMPIAN ET 262L
REMITALL BELLE 92L
REMITALL OLYMPIAN ET 262L
REMITALL BELLE ET 19M

A great Sleep Easy daughter with amazing phenotype and eye appeal to burn. Genetically, she traces twice to the famous Belle cow family and will be a dead ringer to have a beautiful udder. This heifer moderates birth without sacrificing performance and power. Remember she is also just a two year old heifer's first calf.

	CE	BW	WW	YW	MILK	TM	MCE	SC	CowWt	Stay	MPI	FMI	REA	Fat	Marb
EPD	-4.7	+3.3	+52.6	+81.9	+16.8	+43.1	+1.4	+0.9				+139.9	+0.33	-0.008	+0.15



PLAIN LAKE BELLE 5B. The dam of renowned sire Embracer 8E and is the Belle female from which all Belles descend from.

13 REMITALL-WEST LIBBY 25X

C02939373 February 28 2010 BW: 70 lbs

REM 25X

REMITALL ROUTE 66 ET 346R
REMITALL SLEEP EASY 68U
REMITALL MARVEL ET 120S

REMITALL FIRST CLASS ET 113R
REMITALL LIBBY 200U
PLAIN-LAKE 57J 16G LIBBY 10L

MC RANGER 9615
REMITALL CATALINA 24H
REMITALL PATRIOT ET 13P
REMITALL MARVEL EUDORA 125E
REMITALL OLYMPIAN ET 262L
REMITALL BELLE 92L
SADDLE-VALLEY JOIST 57J
REMITALL GARNET 16G



68U - Sire of Lots 12, 13, 14 & 15

	CE	BW	WW	YW	MILK	TM	MCE	SC	CowWt	Stay	MPI	FMI	REA	Fat	Marb
EPD	-2.2	+2.2	+48.5	+73.4	+16.5	+40.8	+2.7	+0.8				+132.8	+0.30	-0.006	+0.13



Just a 70 lb heifer at birth with a 2.2 birth EPD but you wouldn't know it to see her now. This great looking Sleep Easy daughter is a positive trait female in 11 EPD categories. Her stellar packed pedigree contains no less than three Remitall produced national champion bulls, Route 66, Patriot, and Olympian.

SLEEP EASY DAUGHTERS FROM RENOWNED COW FAMILIES

14 REMITALL-WEST SALLY 42X

C02941061 March 21 2010 BW: 66 lbs

REM 42X

REMITALL ROUTE 66 ET 346R
REMITALL SLEEP EASY 68U
 REMITALL MARVEL ET 120S

MC RANGER 9615
 REMITALL CATALINA 24H
 REMITALL PATRIOT ET 13P
 REMITALL MARVEL EUDORA 125E
 REMITALL KEYNOTE 20X
 REMITALL CATALINA 24H
 REMITALL OLYMPIAN ET 262L
 REMITALL SALLY 265J

REMITALL NATION WIDE ET 93N
REMITALL SALLY 210U
 REMITALL SALLY 291R

	CE	BW	WW	YW	MILK	TM	MCE	SC	CowWt	Stay	MPI	FMI	REA	Fat	Marb
EPD	-2.5	+2.5	+55.0	+83.4	+17.4	+44.9	+2.7	+1.0				+136.5	+0.37	-0.004	+0.08



CATALINA 24H. Both Lots 14 & 15 are line bred to this record selling and Canadian National Champion Female



KEYNOTE 20X. This influential sire comes from the Patricia's - the same cow family as Lot 15.

A low birth weight heifer by Sleep Easy that has never looked back. Her two year old dam is the kind of female you would like your whole herd to emulate. This young heifer is wide topped, long bodied and easy on the eyes.



15 REMITALL-WEST PATRICIA 48X

C02939384 March 25 2010 BW: 84 lbs

REM 48X

REMITALL ROUTE 66 ET 346R
REMITALL SLEEP EASY 68U
 REMITALL MARVEL ET 120S

REMITALL LAGRD PLAYER ET 358P
REMITALL PATRICIA 423T
 REMITALL PATRICIA 157M

MC RANGER 9615
 REMITALL CATALINA 24H
 REMITALL PATRIOT ET 13P
 REMITALL MARVEL EUDORA 125E
 REMITALL MEDALLION 58M
 REMITALL CATALINA 24H
 REMITALL JONATHON 73J
 REMITALL GIPSY EVA 67E

	CE	BW	WW	YW	MILK	TM	MCE	SC	CowWt	Stay	MPI	FMI	REA	Fat	Marb
EPD	-3.3	+5.2	+53.6	+82.1	+16.2	+43.0	+2.4	+0.8				+139.9	+0.34	-0.009	+0.09

A real sweetheart of a heifer here. She is thick made, smooth, balanced and as broody looking as you could make a young heifer at this age. As a breeding tool, this heifer has an extreme amount of potential. She is double bred to the Catalina 24H cow and is also a direct descendent of the same cow family that produced the breed legend sire Remitall Keynote 20X.



REMITALL WEST

FANCY SWEETHEARTS FROM 2 YEAR OLD HEIFERS!



16 REMITALL-WEST SUPER LASS 27X

C02939371

March 02 2010

BW: 69 lbs

REM 27X

REMITALL ROUTE 66 ET 346R
REMITALL SLEEP EASY 68U
 REMITALL MARVEL ET 120S

REMITALL PRECISION 455P
REMITALL SUPER LASS 184U
 REMITALL SUPER LASS 352S

MC RANGER 9615
 REMITALL CATALINA 24H
 REMITALL PATRIOT ET 13P
 REMITALL MARVEL EUDORA 125E
 REMITALL MEDALLION 58M
 REMITALL CATALINA ET 69L
 REMITALL OLYMPIAN ET 262L
 MFR LASS 99J

	CE	BW	WW	YW	MILK	TM	MCE	SC	CowWt	Stay	MPI	FMI	REA	Fat	Marb
EPD	-2.0	+3.5	+48.4	+72.3	+15.0	+39.2	+1.6	+0.8				+129.1	+0.28	-0.004	+0.11

Typical of the Sleep Easy daughters, Lot 16 carries a low birth weight but is not small anymore. You will love the thickness this heifer has combined with a wonderful profile. Her two year old dam is a near perfect model of a young cow with udder quality, ease of maintenance, eye appeal and the fact that she has done a great job raising her first calf. This heifer calf traces four times to the single most influential cow in the breed, Remitall Catalina 24H.



17 REMITALL-WEST MARVEL 40X

C02940961

March 20 2010

BW: 80 lbs

REM 40X

REMITALL EMBRACER 8E
REMITALL ONLINE 122L
 REMITALL CATALINA 24H

REMITALL OLYMPIAN ET 262L
REMITALL MARVEL 301U
 REMITALL MARVEL ELBERTA 83E

REMITALL ACME 10A
 PLAIN LAKE BELLE 20X 117P 5B
 MM RSM STOCKMASTER 512
 REMITALL CATALINA 139C
 REMITALL GOVERNOR 236G
 REMITALL CATALINA 24H
 REMITALL BOOMER 46B
 REMITALL MARVEL AURA 41A

	CE	BW	WW	YW	MILK	TM	MCE	SC	CowWt	Stay	MPI	FMI	REA	Fat	Marb
EPD	-1.7	+5.5	+53.9	+91.8	+17.6	+44.6	+5.1	+1.1				+163.8	+0.38	-0.020	+0.08

Another top Online daughter, moderate at birth with style to burn. Check out her impressive EPDs, she is positive in nine separate categories. The granddam, Marvel 83E, is the dam of herd sire, Plainsman 16P, and current donor cow Remitall Marvel 170J, that has embryos selling as Lot 34. Young Online daughters like this are hard to find and harder to own. Here is a great opportunity and a real genetic gem.



18 REMITALL-WEST FORTINA 66X

C02939377

April 18 2010

BW: 88 lbs

REM 66X

REMITALL ROUTE 66 ET 346R
REMITALL PAYROLL 73U
 REMITALL JUNO 106R

REMITALL LAGRAN SUPER B 202S
REMITALL FORTINA 249U
 REMITALL FOURTINA 357S

MC RANGER 9615
 REMITALL CATALINA 24H
 REMITALL OLYMPIAN ET 262L
 REMITALL JUNO'S ECHO 56E
 CS BOOMER 29F
 REMITALL LA GRAND CATALINA 34N
 REMITALL PIRATE ET 135P
 REMITALL FORTINA 352P

	CE	BW	WW	YW	MILK	TM	MCE	SC	CowWt	Stay	MPI	FMI	REA	Fat	Marb
EPD	-3.2	+8.0	+53.9	+89.5	+17.1	+44.0	+0.0	+0.7				+156.4	+0.30	-0.019	+0.04

A two year old heifer's first calf and a fancy one. Just an 88lb. birth weight on a young April heifer that is really sweet fronted but still possessing some muscle shape and thickness. This heifer is positive for growth, milk, and carcass traits. Triple bred to Catalina 24H, this heifer has all the tools to make a great cow.

A BONA FIDE FUTURE POWER COW!

REMITALL WEST



LOT 19

19 REMITALL-WEST FOXY 409U

C02926481

September 05 2008

BW: 95 lbs

REM 409U

REMITALL PATRIOT ET 13P
REMITALL SHIRAZ ET 158S
REMITALL SALLY 63M

CS BOOMER 29F
HILL'S FOXY 80M
HILL'S BLUE MOON 26J

REMITALL OLYMPIAN ET 262L
REMITALL GINGER 23G
REMITALL KEYNOTE 20X
REMITALL SALLY ET 161H

REMITALL BOOMER 46B
CS MISS 1ST FLAG 21A
LCPH 16C BALANCE 10E
MILLVALLEY Y7 ELLIE 20E

Foxy is truly one of the power females in the sale. She possesses an amazing amount of thickness and muscle shape yet retains very much the look of a productive cow. She is a strong EPD female and is positive for ten individual traits. Her dam was purchased from Hill's Polled Herefords for \$14,000 and went on to win Reserve Sr. Champion Female at the 2004 Canadian National show. The sire, Remitall Shiraz ET 158S, is one of Patriot's top breeding sons and was the 2006 Canadian National Reserve Jr. Bull Calf Champion. Foxy comes from our fall calving program but has been held over and bred for a spring calf.

Bred - May 28 to SHF Wonder M326 W18.

	CE	BW	WW	YW	MILK	TM	MCE	SC	CowWt	Stay	MPI	FMI	REA	Fat	Marb
EPD	-5.6	+7.5	+57.1	+99.3	+17.4	+45.9	+1.7	+0.9	+38.7	-0.5		+153.1	+0.37	-0.008	+0.07



80M - Dam of Lot 19. Donor female for Remitall.



WONDER W18 - Service Sire to Lot 19. The high selling bull at \$28,000 in the 2010 Sandhill Farms bull sale. Special service sire to Lot 19 and many of the bred heifers in this sale. These are the first breeding services to be offered on this exciting new herd sire.

BEAUTIFUL, BROODY & BRED TO WONDER!



20 REMITALL-WEST FINCH 48W

C02938171 April 27 2009 BW: 89 lbs
REM 48W

REMITALL FIRST CLASS ET 113R
REMITALL TIMBERLINE 52T
BNC 4L DIAMOND LIL 110N

REMITALL HOLLYWOOD 37H
REMITALL FINCH 316N
REMITALL FINCH 120F

REMITALL OLYMPIAN ET 262L
REMITALL BELLE 92L
FCC 60G MADDUX 4L
BLACK-DIAMOND GLEAMER 209J
MM RSM STOCKMASTER 512
REMITALL SHARON ESTA 84E
REMITALL CASINO 12C
REMITALL ULA 118U

	CE	BW	WW	YW	MILK	TM	MCE	SC	CowWt	Stay	MPI	FMI	REA	Fat	Marb
EPD	-7.0	+6.6	+57.1	+97.2	+13.2	+41.8	-0.3	+0.8	+52.6	-0.8		+130.5	+0.35	+0.015	+0.17

A real eye catching heifer with pigmentation and strength of bone. She is a power heifer for performance and carcass traits. She boasts a stellar 121 weaning and a 113 yearling index ratio. Her granddam, 120F, is a former Agribition class winner and her sire, Timberline 52T, is now performing herd sire duties for Olson Hereford Ranch, ND.

Bred - June 2 to SHF Wonder M326 W18.



21 REMITALL-WEST COUNTRY 40W

C02926486 April 14 2009 BW: 85 lbs
REM 40W

REMITALL GOVERNOR 236G
REMITALL REWARD 17R
REMITALL RITA 26N

REMITALL HOLLYWOOD 37H
REMITALL COUNTRY GIRL 298N
LRL 136E COUNTRY GIRL 36A 501H

REMITALL CASINO 12C
REMITALL ZERMARVEL 111Z
REMITALL ONLINE 122L
REMITALL RITA 253J
MM RSM STOCKMASTER 512
REMITALL SHARON ESTA 84E
REMITALL EAGLE 136E
LRL 5P COUNTRY GIRL 36A 301C

	CE	BW	WW	YW	MILK	TM	MCE	SC	CowWt	Stay	MPI	FMI	REA	Fat	Marb
EPD	-2.4	+6.2	+44.0	+98.6	+12.0	+34.0	+1.2	+0.9	+41.2	+0.9		+169.4	+0.36	-0.008	+0.20

Another stout made eye appealing female with extra pigment. She has an impressive 102 yearling index ratio. The Country females were one of the strong cow families that had been added to the Remitall program. They were known to be strong milking productive females. The sire, Reward 17R, was one of the most popular walking bulls to sell in the 2008 Remitall dispersal.

Bred - July 30 to SHF Wonder M326 W18.



22 REMITALL-WEST SHEILA 13W

C02926484 February 09 2009 BW: 92 lbs
REM 13W

REMITALL HIGHWAY ET 157H
REMITALL LAGRD POUNDER ET 204P
REMITALL CATALINA 24H

C&T 4G JASPER 9K
C&T 9K SHE'S ALL THERE 78N
BLAIR-ATHOL 25C AMIGA 4F

REMITALL KEYNOTE 20X
TOWER-CREEK AMBER 6B
MM RSM STOCKMASTER 512
REMITALL CATALINA 139C
RU 16Y LAREDO 4G
RU 46Z JANA 3C
NJW Z17 VAQUERO 25C
BLAIR-ATHOL 664 DEANNA 14D

	CE	BW	WW	YW	MILK	TM	MCE	SC	CowWt	Stay	MPI	FMI	REA	Fat	Marb
EPD	-3.7	+6.1	+39.3	+69.8	+13.5	+33.2	-1.4	+0.4	+42.6	-1.2		+115.7	+0.03	+0.001	-0.07

A short marked, pigmented Pounder daughter with the stoutness and profile to be a front pasture female. Pounder daughters are noted for their udder quality and mothering attributes, this top bred heifer will be no exception.

Bred - June 25 to SHF Wonder M326 W18.

POWERFUL HEIFERS BRED WONDER & ONLINE!

23

REMITALL-WEST JADE 37W

C02938169

April 11 2009

BW: 94 lbs

REM 37W

REMITALL LAGRD POUNDER ET 204P
REMITALL SEABREEZE 98S
REMITALL DEBBIE 104N

REMITALL ICON 24K
MHPH MS 24K JADE 115M
MHPH MS 60D JADE 128K

REMITALL HIGHWAY ET 157H
REMITALL CATALINA 24H
REMITALL OLYMPIAN ET 262L
JUSTAMERE 71H DEBBIE 786L
REMITALL HOLLYWOOD 37H
REMITALL GAY MARVEL 123G
RU DUSTER 60D
SADDLE-VALLEY JADE 268E



REMITALL WEST

	CE	BW	WW	YW	MILK	TM	MCE	SC	CowWt	Stay	MPI	FMI	REA	Fat	Marb
EPD	-7.6	+7.4	+56.6	+75.5	+19.3	+47.6	-1.7	+0.5	+53.7	+0.0		+111.3	+0.17	+0.002	+0.03

Here is one of the elite performance heifers of the sale. She carries an impressive 121 weaning index ratio and a strong 101 yearling index ratio. Maternally, this female is also tops and comes from the Jade cow family - one of the most noted in the former Saddle Valley and Kilmorlie herds.

Bred - July 30 to SHF Wonder M326 W18.

24 REMITALL-WEST COUNTRY 31W

C02926478

March 30 2009

BW: 80 lbs

REM 31W

MC RANGER 9615
REMITALL ROUTE 66 ET 346R
REMITALL CATALINA 24H

REMITALL FINE LINE 141F
REMITALL COUNTRY GIRL 300L
LRL 136E COUNTRY GIRL 36A 501H

CIRCLE-D WRANGLER 832W
SBF ROYAL GYPSY
MM RSM STOCKMASTER 512
REMITALL CATALINA 139C
REMITALL DIGGER 107D
REMITALL LADY MARVEL 24X
REMITALL EAGLE 136E
LRL 5P COUNTRY GIRL 36A 301C



	CE	BW	WW	YW	MILK	TM	MCE	SC	CowWt	Stay	MPI	FMI	REA	Fat	Marb
EPD	-0.7	+2.8	+39.8	+65.4	+16.4	+36.3	+0.1	+0.4	+10.2	+0.5		+134.5	+0.19	-0.015	+0.03

A great profiling moderate birth weight heifer. You can count on this female to have awesome udder quality and milking ability. The first Route 66 daughters in production have been simply outstanding. Online semen is hard to come by; this is the only female in the sale bred to him.

Bred - May 23 to Remitall Online 122L.

25 REMITALL-WEST JUNO 33W

C02926488

April 04 2009

BW: 82 lbs

REM 33W

REMITALL HIGHWAY ET 157H
REMITALL LAGRD POUNDER ET 204P
REMITALL CATALINA 24H

REMITALL OLYMPIAN ET 262L
REMITALL JUNO 47P
REMITALL JUNO 85K

REMITALL KEYNOTE 20X
TOWER-CREEK AMBER 6B
MM RSM STOCKMASTER 512
REMITALL CATALINA 139C
REMITALL GOVERNOR 236G
REMITALL CATALINA 24H
REMITALL HERITAGE 89H
REMITALL JUNO'S ECHO 56E



	CE	BW	WW	YW	MILK	TM	MCE	SC	CowWt	Stay	MPI	FMI	REA	Fat	Marb
EPD	-7.2	+5.6	+43.1	+60.3	+15.4	+37.0	-1.6	+0.5	+57.5	-0.5		+102.4	-0.02	-0.001	-0.01

A moderate framed but thick made heifer. A very complete heifer in her design that you can expect to have super udder quality and great mothering ability. Her dam is that way and is extremely easy fleshing - a great trait to have in a group of cows.

Bred - July 30 to SHF Wonder M326 W18.

HERD BUILDING YOUNG FEMALES BRED SLEEP EASY & WONDER!



26 REMITALL-WEST MONICA 52W

C02926483 May 08 2009 BW: 90 lbs

REM 52W

MC RANGER 9615
REMITALL ROUGHNECK ET 340R
 REMITALL SALLY 131K

REMITALL LEGEND 20L
RU 20L MONICA 50N
 HAROLDSON'S CU MONICA 42H 38K

CIRCLE-D WRANGLER 832W
 SBF ROYAL GYPSY
 REMITALL GOVERNOR 236G
 REMITALL SALLY ET 161H
 REMITALL HOLLYWOOD 37H
 BLAIR-ATHOL ADMIRAL LASS 75E
 HAROLDSON'S 8E SABRE ET 42H
 HAROLDSON'S MONICA 211X ET 52C

	CE	BW	WW	YW	MILK	TM	MCE	SC	CowWt	Stay	MPI	FMI	REA	Fat	Marb
EPD	-5.3	+7.5	+62.1	+114.6	+18.3	+49.4	-1.3	+1.1	+59.2	-1.6		+173.1	+0.51	-0.007	+0.19

An impressive power female. Monica 52W sports a sensational 118 weaning and yearling index ratio. Check out her stellar EPDs for growth, milk and carcass. This female has the genetics to do some very exciting things.

Bred - May 23 to Remitall Sleep Easy 68U.



27 REMITALL-WEST ROSETTE 53W

C02943376 May 12 2009 BW: 82 lbs

REM 53W

REMITALL HIGHWAY ET 157H
REMITALL LAGRD POUNDER ET 204P
 REMITALL CATALINA 24H

MHPH 24K NEBRASKA 314N
REMITALL ROSETTE 320R
 ICF NINDAWAYMA 707B 219M

REMITALL KEYNOTE 20X
 TOWER-CREEK AMBER 6B
 MM RSM STOCKMASTER 512
 REMITALL CATALINA 139C
 REMITALL ICON 24K
 ALLIANCE 707B ROSE ET 201H
 KLONDIKE 28U 707B
 ICF NINDAWAYMA 832W 209K

	CE	BW	WW	YW	MILK	TM	MCE	SC	CowWt	Stay	MPI	FMI	REA	Fat	Marb
EPD	-6.6	+5.8	+46.5	+77.7	+19.4	+42.7	-1.4	+0.5	+46.5	-1.0		+110.8	+0.12	+0.010	-0.01

A moderate framed, very thick made heifer. This easy fleshing female will suit a lot of different breeding programs and carries some unique but powerful genetics. Don't forget she is just a mid May born female.

Bred - June 10 to SHF Wonder M326 W18.



28 REMITALL-WEST FAITH 44W

C02938170 April 19 2009 BW: 72 lbs

REM 44W

REMITALL FIRST CLASS ET 113R
REMITALL TIMBERLINE 52T
 BNC 4L DIAMOND LIL 110N

REMITALL OLYMPIAN ET 262L
REMITALL FAITH 277R
 REMITALL FAITH 163F

REMITALL OLYMPIAN ET 262L
 REMITALL BELLE 92L
 FCC 60G MADDUX 4L
 BLACK-DIAMOND GLEAMER 209J
 REMITALL GOVERNOR 236G
 REMITALL CATALINA 24H
 REMITALL CRUSADER 153C
 GPHR LADY PROMISE 13W

	CE	BW	WW	YW	MILK	TM	MCE	SC	CowWt	Stay	MPI	FMI	REA	Fat	Marb
EPD	-4.9	+4.0	+42.3	+71.9	+16.0	+37.2	-0.1	+0.6	+28.9	+0.4		+121.0	+0.16	+0.000	+0.05

A young female with great extension to her front end and one that is destined to make a wonderful cow. A low birth weight of 72 lbs but a female that still garners an impressive 101 weaning index ratio with a 100 yearling index ratio. The granddam, 163F, is a former Agribition class winner.

Bred - May 26 to Remitall Sleep Easy 68U.

ELITE EMBRYOS - MATINGS FOR THE FUTURE!

LOT 29

4 EXPORTABLE EMBRYOS

HARVIE TAILOR MADE ET 7W (CVIH 7W)

X

REMITALL CATALINA ET 380P (NGA 380P)

HARVIE TRAVELER 69T

HARVIE TAILOR MADE ET 7W

HARVIE MISS FIREFLY 51F

REMITALL MEDALLION 58M

REMITALL CATALINA ET 380P

REMITALL CATALINA 24H

KAIRURU ABERDEEN 03 0047

HARVIE PEARL 129P

HARVIE DEYNOTE 61D

HARVIE MISS NYLON 1Y

REMITALL KOOTENAY 9K

EASTON 20X DELLA 15E

MM RSM STOCKMASTER 512

REMITALL CATALINA 139C



380P - Donor Dam

PEDIGREE ESTIMATES:

	CE	BW	WW	YW	MILK	TM	MCE	SC	CowWt	Stay	MPI	FMI	REA	Fat	Marb
EPD	-0.6	+4.8	+49.5	+84.0	+15.7	+40.4	+0.9	+0.6	+53.2	-1.3			+0.29	+0.003	+0.01

An exciting combination in this mating, melding together the two most powerful cows of the Remitall and Harvie programs (Catalina 24H and Miss Firefly 51F).

Selling four exportable embryos.

LOT 30

4 EXPORTABLE EMBRYOS

SHF WONDER M326 W18 ET (W18)

X

REMITALL CATALINA ET 380P (NGA 380P)

KCF BENNETT 3008 M326

SHF WONDER M326 W18 ET

SHF GOVERNESS 236G L37

REMITALL MEDALLION 58M

REMITALL CATALINA ET 380P

REMITALL CATALINA 24H

RRH MR FELT 3008

KCF MISS 459 F284

MM RSM STOCKMASTER 512

SHF INTERSTATE D03 G80

REMITALL KOOTENAY 9K

EASTON 20X DELLA 15E

MM RSM STOCKMASTER 512

REMITALL CATALINA 139C



WONDER W18 - Sire of Embryos

PEDIGREE ESTIMATES:

	CE	BW	WW	YW	MILK	TM	MCE	SC	CowWt	Stay	MPI	FMI	REA	Fat	Marb
EPD	+0.4	+4.2	+51.5	+82.8	+14.7	+40.4	+2.0	+1.1					+0.31	-0.011	+0.18

This will be a great mating. This combination will moderate birth, add performance and enhance carcass traits.

Selling four exportable embryos.

LOT 31

4 EXPORTABLE EMBRYOS

REMITALL ROUTE 66 ET 346R (NGA 346R)

X

REMITALL MARVEL EUDORA 125E (NGA 125E)

MC RANGER 9615

REMITALL ROUTE 66 ET 346R

REMITALL CATALINA 24H

REMITALL KEYNOTE 20X

REMITALL MARVEL EUDORA 125E

REMITALL ZE MARVEL 106Z

CIRCLE-D WRANGLER 832W

SBF ROYAL GYPSY

MM RSM STOCKMASTER 512

REMITALL CATALINA 139C

REMITALL TEAMSTER 9T

REMITALL PATRICIA 99P

REMITALL TOP HAT 206T

REMITALL WENDY 99W



125E - Donor Dam

PEDIGREE ESTIMATES:

	CE	BW	WW	YW	MILK	TM	MCE	SC	CowWt	Stay	MPI	FMI	REA	Fat	Marb
EPD	-3.0	+3.9	+49.5	+75.5	+16.0	+40.7	+2.5	+0.8	+42.9	-1.0			+0.41	-0.015	+0.08

A mating combination that will have calves born here at Remitall West in 2011. We feel this could really produce some explosive and exciting results. Marvel 125E is one of the dominant Keynote 20X daughters in the Remitall program. This female will moderate birth, add performance and is off the charts for REA. Her track record for producing show winners is second only to Catalina 24H.

Selling four exportable embryos.

ELITE EMBRYOS - MATINGS FOR THE FUTURE!



LOT 32

4 EXPORTABLE EMBRYOS

HARVIE TAILOR MADE ET 7W (CVIH 7W)

X

REMITALL MARVEL ET 120S (NGA 120S)

HARVIE TRAVELER 69T
HARVIE TAILOR MADE ET 7W
 HARVIE MISS FIREFLY 51F

KAIRURU ABERDEEN 03 0047
 HARVIE PEARL 129P
 HARVIE DEYNOTE 61D
 HARVIE MISS NYLON 1Y
 REMITALL OLYMPIAN ET 262L
 REMITALL GINGER 23G
 REMITALL KEYNOTE 20X
 REMITALL ZE MARVEL 106Z

REMITALL PATRIOT ET 13P
REMITALL CATALINA ET 380P
 REMITALL MARVEL EUDORA 125E

120S - Donor Dam & Dam of Lot 5A

PEDIGREE ESTIMATES:

	CE	BW	WW	YW	MILK	TM	MCE	SC	CowWt	Stay	MPI	FMI	REA	Fat	Marb
EPD	-4.4	+4.3	+54.8	+89.5	+17.9	+45.3	+1.8	+0.8	+59.3	-0.7			+0.39	+0.008	+0.08

Here is a great opportunity to be a part of one of the great young donor cows mated to one of the most exciting new sires to arrive on the Hereford scene. Marvel 120S is the dam of herd sire Remitall Sleep Easy 68U and also the feature heifer, Lot 5A.

Selling 4 exportable embryos.



LOT 33

4 EXPORTABLE EMBRYOS

REMITALL SLEEP EASY 68U (NGA 68U)

X

REMITALL CATALINA ET 135T (NGA 135T)

REMITALL ROUTE 66 ET 346R
REMITALL SLEEP EASY 68U
 REMITALL MARVEL ET 120S

MC RANGER 9615
 REMITALL CATALINA 24H
 REMITALL PATRIOT ET 13P
 REMITALL MARVEL EUDORA 125E

GHC STAR MOOSE 59M
REMITALL CATALINA ET 135T
 REMITALL CATALINA 24H

WTK 75A CONTINENTAL 66F
 WALPOLE PHILIS 13F
 MM RSM STOCKMASTER 512
 REMITALL CATALINA 139C

PEDIGREE ESTIMATES:

135T - Donor Dam

	CE	BW	WW	YW	MILK	TM	MCE	SC	CowWt	Stay	MPI	FMI	REA	Fat	Marb
EPD	-3.8	+4.8	+58.2	+86.9	+13.5	+42.7	+1.2	+1.0	+91.3	-2.1			+0.41	-0.007	+0.03

A super combination of two of the most dynamic individuals currently in the Remitall West program. We have been so impressed with Sleep Easy's first crop of calves with their moderation at birth and their ability to grow out rapidly. Mated to a direct daughter of Catalina 24H is just pure exciting.

Selling 4 exportable embryos.



LOT 34

4 EXPORTABLE EMBRYOS

HARVIE TAILOR MADE ET 7W (CVIH 7W)

X

REMITALL MARVEL 170J (NGA 170J)

HARVIE TRAVELER 69T
HARVIE TAILOR MADE ET 7W
 HARVIE MISS FIREFLY 51F

KAIRURU ABERDEEN 03 0047
 HARVIE PEARL 129P
 HARVIE DEYNOTE 61D
 HARVIE MISS NYLON 1Y

MM RSM STOCKMASTER 512
REMITALL MARVEL 170J
 REMITALL MARVEL ELBERTA 83E

MM STOCKMASTER 092
 MM MISS MASTER 977
 REMITALL BOOMER 46B
 REMITALL MARVEL AURA 41A

PEDIGREE ESTIMATES:

170J - Donor Dam

	CE	BW	WW	YW	MILK	TM	MCE	SC	CowWt	Stay	MPI	FMI	REA	Fat	Marb
EPD	-1.7	+5.3	+51.6	+81.8	+17.1	+42.9	+1.0	+0.7	+66.3	-1.1			+0.33	-0.001	+0.01

A top donor cow and former 2001 Canadian National Sr. Champion Female. This cow possesses amazing muscle shape, width of pins, udder quality and is still extremely sound at the age of 11. Mating this female to Tailor Made will produce some dramatic results.

Selling 4 exportable embryos.

35 OVHF 533P BLUEBELL 4X

C02939725 February 20 2010 BW: 90 lbs

OVHF 4X

REMITALL ONLINE 122L
STAR BRIGHT FUTURE 533P ET
 RB L1 DOMINETTE 8116

FHF 8403 STARBUCK 19H
PRESTON 19H GENEVIEVE 3J 1R
 MISS 23C JESSICA 3J

REMITALL EMBRACER 8E
 REMITALL CATALINA 24H
 RB L1 DOMINO 4067
 RB L1 BRIGHTNES 0058

DRACHIEVER 8403
 FHF RUTH 162A 18E
 JSF 37 271 DEVO 23C
 MISS 74U LINDA 27U 6F

A strong show heifer, a total package with exceptional EPDs. Bluebell is long & deep, wide topped, and balanced from end to end. Her sire is a trait leader in 6 traits. Will work with Hereford Jrs. if purchased for Bonanza in Saskatoon, SK, 2011.

OVHF

	CE	BW	WW	YW	MILK	TM	MCE	SC	CowWt	Stay	MPI	FMI	REA	Fat	Marb
EPD	-3.2	+5.1	+51.3	+79.2	+24.8	+50.4	+3.6	+0.6				+143.2	+0.14	-0.018	+0.00



1R - Dam of Lot 35



36 OVHF AXA MISS CARLSON 105X

C02943008 February 28 2010 BW: 75 lbs

JILL 105X

HARVIE SENSATION 26S
HARVIE DAN RICOCHET 167U
 HARVIE DAN MS FIREFLY 69S

CCR 57G STAMINA ET 199S
OVHF 199S MISS CARLSON ET 70U
 GHC MISS CARLSON 78M

KAIRURU ABERDEEN 03 0047
 HARVIE JACCI 82J
 BR DM CHANNING ET
 HARVIE MS FIREFLY 65P
 RU 20X BOULDER 57G
 GOLDEN-OAK 46B KEEPSAKE 23K
 GHC SCF ESK PREMIER 6J
 GHC MISS LASSIE 114K

The Miss Carlson 78M cow family has served us well, producing top show and sale heifers year after year. This year is no exception, we are thrilled to offer a powerful stylish heifer calf off of a Stamina x Miss Carlson 78M two year old. OVHF 199S Miss Carlson ET 70U was purchased with AXA Polled Herefords in the Harvie Ranching & Guests sale as a heifer calf and now shows a lot of promise with a beautiful udder and a strong heifer calf at side. Owned with AXA Polled Herefords, NB

	CE	BW	WW	YW	MILK	TM	MCE	SC	CowWt	Stay	MPI	FMI	REA	Fat	Marb
EPD	+0.8	+4.0	+47.8	+85.0	+15.2	+39.1	+2.8	+0.7				+134.7	+0.50	+0.004	+0.00



70U - Dam of Lot 36



37 SSAL GLEE 1X

C02940530 February 28 2010

BW: 78 lbs

SSAL 1X

REMITALL KEYNOTE 20X
RU 20X GALAXY 58G
 RU 10A ELM 57E

HARVIE RAFTSMAN 16R
OVHF UPPERCLASS 31U
 OVHF SABRINA 12S

REMITALL TEAMSTER 9T
 REMITALL PATRICIA 99P
 REMITALL ACME 10A
 RU 40L BUTTERCUP 57Z
 HARVIE LADIES MAN 4L
 HARVIE MISS FIREFLY 51F
 OVHF 7C TROY 5P
 OVHF KEEPSAKE 32K

SSAL Glee 1X has a powerful and unique genetic mating that may not be seen again. This feminine heifer is out of the legendary RU 20X Galaxy 58G who is a proven cow maker. She is a stylish individual who is out of our beautiful Raftsman show yearling from last year. Her excellent set of EPDs (27.7 for Milk!) as well as her parentage will make Glee 1X a fantastic cow. For those with plans to come to Bonanza 2011 in Saskatchewan, have a look at this pretty heifer as your show yearling.

	CE	BW	WW	YW	MILK	TM	MCE	SC	CowWt	Stay	MPI	FMI	REA	Fat	Marb
EPD	-0.3	+4.3	+49.0	+87.5	+27.7	+52.2	+2.3	+0.5	+47.7	+0.5		+142.2	+0.38	-0.002	+0.01



31U - Dam of Lot 37

38 SSAL 199S TESSA 5X

C02940528

March 04 2010

BW: 62 lbs

SSAL 5X

RU 20X BOULDER 57G
CCR 57G STAMINA ET 199S
 GOLDEN-OAK 46B KEEPSAKE 23K

WILGOR 55K NORTHEASTERN OL 2N
SQUARE-D ELLIE 6008S
 SQUARE-D HILARY 628L

REMITALL KEYNOTE 20X
 RU 10A DEW 57D
 REMITALL BOOMER 46B
 GOLDEN-OAK Y166 DONNA 5D
 REMITALL ONLINE 122L
 WILGOR 174H KEYLINE 29F 55K
 SQUARE-D HINGE 290J
 SQUARE-D KELSEY 728J

	CE	BW	WW	YW	MILK	TM	MCE	SC	CowWt	Stay	MPI	FMI	REA	Fat	Marb
EPD	+2.2	+1.7	+40.7	+68.9	+15.9	+36.3	+5.5	+0.9	+36.4	-1.0		+132.7	+0.48	-0.008	-0.01



SSAL 199S Tessa 5X is one of our top females who demonstrates style, thickness and performance. Her dam, Ellie 6008S, is a strong Northeastern female who has low birth weight calves which develop into high performance individuals. Tessa 5X is the complete package when it comes to adding a quality individual to your herd. If you are a Junior who wants to show at the 2011 Bonanza in Saskatoon, SK then here is your chance to buy an outstanding female.

LOT 39

39 HARVIE THRILLER 67X

C02939761

February 16 2010

BW: 98 lbs

CVIH 67X

KAIRURU ABERDEEN 03 0047

HARVIE DAN T-BONE 196T

HARVIE MS FIREFLY 65P

HARVIE HITMAN 31H

HARVIE 43A LINDA 102L

EASTON 26Y IRON LADY 43A

LEELANDS TRANSITION T7

KAIRURU PLUM T44

HARVIE LADIES MAN 4L

HARVIE MISS FIREFLY 51F

HARVIE EXTRA 35E

BAR-RZ 21Z BETTY 38B

EASTON MORE SUMMIT 26Y

VVHF MISS STELLA 7W

Thriller is the first son to sell from the \$22,500 Harvie DAN T-Bone bull who is causing a stir down in the States. Thriller is a very cool fronted bull with lots of middle and shape to him. His maternal brother was sold to Lorenzen Farms and Prairie Meadow Farms out of Illinois last year for their heifer pen. Thriller's dam is a maternal sister to Harvie Traveler's dam.

Selling 3/4 interest and full possession.

Show rights reserved through Denver, 2011.

	CE	BW	WW	YW	MILK	TM	MCE	SC	CowWt	Stay	MPI	FMI	REA	Fat	Marb
EPD	+0.9	+4.4	+45.3	+77.7	+15.0	+37.7	-2.4	+0.6	+19.3	-0.9		+126.5	+0.15	+0.009	+0.06



102L - Dam of Lot 39



196T - Sire of Lot 39



LOT 40

40 HARVIE DAN RANCH HAND ET 3X
 C02943645 January 04 2010 BW: 82 lbs
 CVIH 3X

KAIRURU ABERDEEN 03 0047
HARVIE SENSATION 26S
 HARVIE JACCI 82J

BR DM CHANNING ET
HARVIE DAN MS FIREFLY 69S
 HARVIE MS FIREFLY 65P

LEELANDS TRANSITION T7
 KAIRURU PLUM T44
 HARVIE GOVERNOR 40G
 HARVIE MISS FIREFLY 51F
 REMITALL ONLINE 122L
 DM L1 DOMINETTE 820
 HARVIE LADIES MAN 4L
 HARVIE MISS FIREFLY 51F

Ranch Hand is a deep bodied bull that is going to add performance but still work in the heifer pen. Ranch Hand is a full brother to Ricochet - the Reserve Spring Bull Calf Champion at Denver in 2009. His dam is definitely one of the top donor cows in our herd. Look for Ranch Hand's two maternal siblings in the sale, they are stand outs!
 Owned with DAN Polled Herefords, ND.
 Selling 3/4 interest and full possession.
 Show rights reserved through Denver, 2011.

	CE	BW	WW	YW	MILK	TM	MCE	SC	CowWt	Stay	MPI	FMI	REA	Fat	Marb
EPD	+0.9	+3.2	+43.7	+80.2	+14.5	+36.3	+2.2	+0.5	+27.7	-0.6			+0.36	+0.012	+0.04



69S - Dam of Lot 40



HARVIE DAN RICHOCET 167U
 Full Brother to Lot 40
 Reserve Spring Bull Calf Champion,
 Denver 2009



26S - Sire of Lot 40



41 HARVIE HIGH ROLLER ET 66X

C02943647

February 16 2010

BW: 101 lbs

CVIH 66X

KAIRURU ABERDEEN 03 0047

HARVIE TRAVELER 69T

HARVIE PEARL 129P

BR DM CHANNING ET

HARVIE DAN MS FIREFLY 69S

HARVIE MS FIREFLY 65P

LEELANDS TRANSITION T7

KAIRURU PLUM T44

LEVELDALE KODIAK 23C ET 19K

EASTON 26Y IRON LADY 43A

REMITALL ONLINE 122L

DM L1 DOMINETTE 820

HARVIE LADIES MAN 4L

HARVIE MISS FIREFLY 51F

High Roller is a tank of a calf. He is a soft-hided bull that is packed full of performance and muscle. When you combine these great features with his strong profile, you get a show bull, and a breed changer. You are going to have to put a lot of miles on your truck to find a better cow than his mother.

Selling 1/2 interest, 1/2 possession. Show rights reserved through World Hereford Conference, 2012.

	CE	BW	WW	YW	MILK	TM	MCE	SC	CowWt	Stay	MPI	FMI	REA	Fat	Marb
EPD	+0.2	+4.4	+57.2	+95.2	+19.0	+47.6	+0.9	+0.4	+48.9	-1.7			+0.51	+0.006	-0.04



69S - Dam of Lot 41



69T - Sire of Lot 41



Lot 43 - Full Sister to Lot 41



42 HARVIE DAN MS FIREFLY 10X

C02939781 January 13 2010 BW: 83 lbs

CVIH 10X

KAIRURU ABERDEEN 03 0047
HARVIE TRAVELER 69T
 HARVIE PEARL 129P

HARVIE LADIES MAN 4L
HARVIE MS FIREFLY 65P
 HARVIE MISS FIREFLY 51F

LEELANDS TRANSITION T7
 KAIRURU PLUM T44
 LEVELDALE KODIAK 23C ET 19K
 EASTON 26Y IRON LADY 43A

HARVIE HILLS 68H
 HARVIE MISS JULIE 9J
 HARVIE DEYNOTE 61D
 HARVIE MISS NYLON 1Y

Here is a rare opportunity to get your hands on a Firefly 65P daughter - the cow that has produced us several herd sires and donor cows. Firefly 10X is a super cool fronted, long bodied heifer with lots of hair and a great hip to her.

Owned with DAN Polled Herefords, ND.

	CE	BW	WW	YW	MILK	TM	MCE	SC	CowWt	Stay	MPI	FMI	REA	Fat	Marb
EPD	+0.4	+4.2	+53.7	+91.0	+20.7	+47.5	-0.2	+0.5	+42.6	-1.4		+139.0	+0.31	+0.004	+0.00



65P - Dam of Lot 42



69T- Sire of Lot 42



43 HARVIE MS FIREFLY ET 60X

C02943646

February 15 2010

BW: 78 lbs

CVIH 60X

KAIRURU ABERDEEN 03 0047

HARVIE TRAVELER 69T

HARVIE PEARL 129P

BR DM CHANNING ET

HARVIE DAN MS FIREFLY 69S

HARVIE MS FIREFLY 65P

LEELANDS TRANSITION T7

KAIRURU PLUM T44

LEVELDALE KODIAK 23C ET 19K

EASTON 26Y IRON LADY 43A

REMITALL ONLINE 122L

DM L1 DOMINETTE 820

HARVIE LADIES MAN 4L

HARVIE MISS FIREFLY 51F

A show heifer trapped in a donor cow's body. From front to back of this heifer, she is made perfectly. Her full brother is one of our sale feature bull calves. Firefly 60X is going to be the type of heifer that you will be able to build a program around.

Selling 1/2 interest or double your bid and take the whole heifer.

	CE	BW	WW	YW	MILK	TM	MCE	SC	CowWt	Stay	MPI	FMI	REA	Fat	Marb
EPD	+0.2	+4.4	+57.2	+95.2	+19.0	+47.6	+0.9	+0.4	+48.9	-1.7			+0.51	+0.006	-0.04



69S - Dam of Lot 43



69T - Sire of Lot 43



LOT 44

44 HARVIE E MC MS FIREFLY 50X

C02942425

February 12 2010

BW: 78 lbs

CVIH 50X

HARVIE HILLS 68H
HARVIE LADIES MAN 4L
HARVIE MISS JULIE 9J

KAIRURU ABERDEEN 03 0047
E MC ABERDEEN LANI U820 ET
HARVIE MISS FIREFLY 51F

HARVIE EXTRA 35E
HARVIE MISS ANGIE 5A
HARVIE GOVERNOR 40G
HARVIE MISS GINGER 10G
LEELANDS TRANSITION T7
KAIRURU PLUM T44
HARVIE DEYNOTE 61D
HARVIE MISS NYLON 1Y

The last three times we have sold this breeding combination it has sold for over \$10,000 for half interests, and the only difference this time is that we are offering the whole heifer. Firefly 50X is just plain good, she is sweet fronted, has lots of middle and when you get behind her there is lots of muscle there too. Her mother is a direct daughter of Firefly 51F, our foundation female. Juniors, this will be a great show heifer. Owned with McMurry Cattle, MT and Ehlke Herefords, MT. Show rights reserved through Denver, 2011.

	CE	BW	WW	YW	MILK	TM	MCE	SC	CowWt	Stay	MPI	FMI	REA	Fat	Marb
EPD	+0.0	+5.1	+46.1	+80.2	+19.2	+42.3	-1.5	+0.5					+0.15	-0.001	+0.06



U820 - Dam of Lot 44



4L - Sire of Lot 44



51F - Granddam of Lot 44

45 **HARVIE MS NANCY 58X**

C02939805 February 13 2010 BW: 73 lbs
CVIH 58X

HARVIE SENSATION 26S
HARVIE DAN RICOCHET 167U
HARVIE DAN MS FIREFLY 69S

HARVIE SENSATION 26S
HARVIE LADY NANCY 74U
HARVIE LADY NANCY 20N

KAIRURU ABERDEEN 03 0047
HARVIE JACCI 82J
BR DM CHANNING ET
HARVIE MS FIREFLY 65P

KAIRURU ABERDEEN 03 0047
HARVIE JACCI 82J
HARVIE LADIES MAN 4L
HARVIE MISS CHAMPAGNE 6C

What a broody made female, she is going to make a great cow. Nancy is super deep bodied and easy doing but still is very sweet fronted. Her dam was Allan Marshall's pick of our replacement heifers last year.

	CE	BW	WW	YW	MILK	TM	MCE	SC	CowWt	Stay	MPI	FMI	REA	Fat	Marb
EPD	+0.9	+3.3	+44.2	+76.7	+14.7	+36.8	+1.7	+0.4	+37.2	-1.4		+120.2	+0.24	+0.014	+0.05



167U - Sire of Lot 45



29N - Dam of Lot 46



26S - Sire of Lot 46



46 **HARVIE MS NORINE 89X**

C02939771 February 22 2010 BW: 70 lbs
CVIH 89X

KAIRURU ABERDEEN 03 0047
HARVIE SENSATION 26S
HARVIE JACCI 82J

LEVELDALE KODIAK 23C ET 19K
HARVIE MS NORINE 29N
HARVIE MISS LOUISA 43L

LEELANDS TRANSITION T7
KAIRURU PLUM T44
HARVIE GOVERNOR 40G
HARVIE MISS FIREFLY 51F

JSF 37 271 DEVO 23C
LEVELDALE MISS VARSITY VIC 26D
HARVIE HILLS 68H
HARVIE MISS CHAMPAGNE 36C

	CE	BW	WW	YW	MILK	TM	MCE	SC	CowWt	Stay	MPI	FMI	REA	Fat	Marb
EPD	+3.5	+0.9	+31.2	+56.1	+12.8	+28.4	+1.9	+0.3	+19.2	+0.3		+106.6	+0.02	+0.012	+0.00

Everyone that has toured our herd this spring has picked this heifer out as one of their favourites. Norine just has that fancy show look to her. Her dam is a Kodiak daughter, and those Kodiak daughters have become many of our top producing females in our herd - like Traveler's dam.



47 HARVIE MS JOAN 107X

C02939793 February 28 2010 BW: 81 lbs

CVIH 107X

HARVIE LADIES MAN 4L
HARVIE RAFTSMAN 16R
 HARVIE MISS FIREFLY 51F

OTAPAWA SKYMATE 2046 (ET)

HARVIE MS JOAN ET 9S

HARVIE MISS JOAN 92J

HARVIE HILLS 68H
 HARVIE MISS JULIE 9J
 HARVIE DEYNOTE 61D
 HARVIE MISS NYLON 1Y
 SKY 236G PREMIER 132K
 OTAPAWA LEONORA P23
 HARVIE EXTRA 35E
 MISS CRAIGIE RUSTMARK 10Y

A moderate framed, sweet fronted heifer that is very well balanced. Joan's dam is sired by Skymate who sold for \$40,000 in New Zealand. She is also a maternal sister to Deynote, one of our foundation herd sires. Joan is going to make a great cow.

	CE	BW	WW	YW	MILK	TM	MCE	SC	CowWt	Stay	MPI	FMI	REA	Fat	Marb
EPD	+0.2	+3.6	+44.3	+74.4	+19.0	+41.1	+0.2	+0.4	+32.8	-1.8		+142.2	+0.30	-0.017	-0.05



9S - Dam of Lot 47



16R - Sire of Lots 47 & 48



1S - Dam of Lot 48

48 HARVIE MS OMEGA 170X

C02939792 March 29 2010 BW: 85 lbs

CVIH 170X

HARVIE LADIES MAN 4L
HARVIE RAFTSMAN 16R
 HARVIE MISS FIREFLY 51F

REMITALL OLYMPIAN ET 262L
COPPERTONE 262L OMEGA ET 1S
 COPPERTONE 42H OMEGA 1N

HARVIE HILLS 68H
 HARVIE MISS JULIE 9J
 HARVIE DEYNOTE 61D
 HARVIE MISS NYLON 1Y
 REMITALL GOVERNOR 236G
 REMITALL CATALINA 24H
 HAROLDSON'S 8E SABRE ET 42H
 DURALTA 9G OMEGA 24L

	CE	BW	WW	YW	MILK	TM	MCE	SC	CowWt	Stay	MPI	FMI	REA	Fat	Marb
EPD	-1.0	+4.0	+48.2	+80.3	+17.5	+41.6	+0.5	+0.6	+36.2	+0.2		+147.7	+0.28	-0.015	+0.04



Young and beautiful is the best way to describe this heifer. This heifer is a bit younger, but she could be the best show heifer at the end of the day that we have on offer. Her dam comes from the great Duralta Omega cow family. She is sired by Raftsman who was Reserve Senior Champion Bull at Denver.

49 HARVIE MS FIREFLY 30W

C02925779 February 08 2009 BW: 83 lbs

CVIH 30W

REMITALL ONLINE 122L

WILGOR 55K NORTHEASTERN OL 2N
WILGOR 174H KEYLINE 29F 55K

HARVIE LADIES MAN 4L

HARVIE FIREFLY ET 118T

HARVIE MISS FIREFLY 51F

REMITALL EMBRACER 8E
REMITALL CATALINA 24H
CS BOOMER 29F
STAR STYLISH LADY 174H

HARVIE HILLS 68H
HARVIE MISS JULIE 9J
HARVIE DEYNOTE 61D
HARVIE MISS NYLON 1Y

	CE	BW	WW	YW	MILK	TM	MCE	SC	CowWt	Stay	MPI	FMI	REA	Fat	Marb
EPD	+1.3	+4.7	+52.3	+91.2	+23.7	+49.8	+3.4	+0.9	+50.0	-1.5	+156.4	+169.9	+0.37	-0.022	+0.07



24S - Full Sister to Dam of Lot 49 (118T)



178T - Sire of Lot 50



1S - Dam of Lot 50

	CE	BW	WW	YW	MILK	TM	MCE	SC	CowWt	Stay	MPI	FMI	REA	Fat	Marb
EPD	-1.4	+4.4	+43.9	+75.0	+18.3	+40.3	+1.3	+0.9	+34.1	-0.7	+143.9	+140.3	+0.28	-0.010	+0.09

A very well balanced female that comes from one of our top donor cow families. Her dam was a high selling bred heifer in our sale a couple years ago and has produced several high selling sons that are working in purebred operations. Her sire is a MC Ranger son, out of our Hilary 90H donor cow that is now a donor cow for Copper Creek Ranch.

Owned with South Alder Farms and North Bluff Farms Inc, BC.

Pasture exposed April 20 to June 20 to Harvie Winston 5W (High Selling yearling bull in our Spring Bull Sale). Preg tested, due early Feb.

Every year we have offered a bred heifer that is a top donor cow prospect and this year is no different. Here is a chance to get a Northeastern daughter from a full sister to Raftsman and Firefly 65P. Firefly 30W is a powerfully constructed female that has great femininity through her front end and explodes into a huge body. Firefly is going to make a great cow.

AI'd - April 21 to NJW FHF 9710 Tank 45P. Preg tested safe to the A.I. date.

HARVIE RANCHING



LOT 49

50 HARVIE SAFNBFI MS MEDONTE 143W

C02925768 March 11 2009 BW: 89 lbs

CVIH 143W

MC RANGER 9615

HARVIE TARGET ET 173T

HARVIE MISS HILARY 90H

WILGOR 55K NORTHEASTERN OL 2N

HARVIE MS MEDONTE 1S

MHPH MS 24K PRINCESS 1195N

CIRCLE-D WRANGLER 832W

SBF ROYAL GYPSY

HARVIE EXTRA 35E

CROMDALE 1Z TAMARACK 25B

REMITALL ONLINE 122L

WILGOR 174H KEYLINE 29F 55K

REMITALL ICON 24K

MHPH MS 121J PRINCESS 314L



LOT 50

SELLING CHOICE!! LOT 51 OR LOT 51A

51 HARVIE MS PRECIOUS 4U

C02912964 February 01 2008 BW: 72 lbs
CVIH 4U

RU 20X BOULDER 57G
CCR 57G STAMINA ET 199S
GOLDEN-OAK 46B KEEPSAKE 23K
OVHF 20X MASTER KEY 5H
OVHF PRECIOUS EMMA 17N
CASSBURN PRECIOUS A-SOME 1E
REMITALL KEYNOTE 20X
RU 10A DEW 57D
REMITALL BOOMER 46B
GOLDEN-OAK Y166 DONNA 5D
REMITALL KEYNOTE 20X
OVHF CANDY STICK 3P
CASSBURN A-SOME JUNIOR 4B
CASSBURN U81 67K PRECIOUS 7X

	CE	BW	WW	YW	MILK	TM	MCE	SC	CowWt	Stay	MPI	FMI	REA	Fat	Marb
EPD	+2.0	+1.4	+28.3	+48.5	+13.4	+27.6	+3.5	+0.5	-2.3	+0.6	+127.0	+97.2	+0.37	+0.008	-0.05

This is going to be a hard choice to make! Either you take probably one of the best heifer calves in the sale or you take the young cow bred to the \$80,500 bull, Tailor Made. Precious 25X is a super stout made heifer that is still very attractive in her make-up. Precious 4U is a moderate framed, easy doing cow with a very sound udder. We purchased 4U in calf from OVHF because of the great cow family that she comes from.

AI'ed to Harvie Tailor Made ET 7W April 20 then pasture exposed to Harvie Willy 73W May 20 to June 20. Preg tested safe to A.I. date.



LOT 51



HARVIE TAILOR MADE ET 7W
\$80,500 Service Sire to Lot 52

51A HARVIE MS PRECIOUS 25X

C02939803 February 03 2010 BW: 80 lbs
CVIH 25X

HARVIE SENSATION 26S
HARVIE DAN RICOCHET 167U
HARVIE DAN MS FIREFLY 69S

KAIRURU ABERDEEN 03 0047
HARVIE JACCI 82J
BR DM CHANNING ET
HARVIE MS FIREFLY 65P



LOT 51A

	CE	BW	WW	YW	MILK	TM	MCE	SC	CowWt	Stay	MPI	FMI	REA	Fat	Marb
EPD	+0.7	+3.4	+41.3	+72.2	+13.9	+34.6	+2.4	+0.5	+18.8	-0.2		+116.6	+0.41	+0.010	-0.01

52 HARVIE MS NORIANE 145U

C02912970 March 26 2008 BW: 88 lbs

CVIH 145U

HARVIE HILLS 68H
HARVIE LADIES MAN 4L
 HARVIE MISS JULIE 9J

LEVELDALE KODIAK 23C ET 19K

HARVIE MS NORIANE 102N

HARVIE MISS FOXY LADY 45F

HARVIE EXTRA 35E
 HARVIE MISS ANGIE 5A
 HARVIE GOVERNOR 40G
 HARVIE MISS GINGER 10G

JSF 37 271 DEVO 23C
 LEVELDALE MISS VARSITY VIC 26D

HARVIE DEYNOTE 61D

HARVIE MISS CRYSTALIZE 8C

**HARVIE RANCHING**

	CE	BW	WW	YW	MILK	TM	MCE	SC	CowWt	Stay	MPI	FMI	REA	Fat	Marb
EPD	+1.8	+3.7	+38.9	+63.6	+21.4	+40.8	+0.6	+0.3	+28.3	-1.2	+140.2	+135.4	-0.02	-0.014	+0.01

A great young pair. 145U is sired by the multi-trait leader, Harvie Ladies Man 4L, that just keeps producing great daughters. 145U has a picture perfect udder. 71X is a very complete heifer that is moderate framed and super showy. She would make a competitive show heifer.

Pasture exposed to Harvie Willy 73W (maternal brother to the high selling female in our sale last year, Harvie Ms Nylon 102U) April 25 to June 20. Preg tested, due early Feb.

52A HARVIE MS NORIANE 71X

C02939807 February 17 2010 BW: 70 lbs

CVIH 71X

HARVIE SENSATION 26S
HARVIE DAN RICOCHET 167U
 HARVIE DAN MS FIREFLY 69S

KAIRURU ABERDEEN 03 0047
 HARVIE JACCI 82J
 BR DM CHANNING ET
 HARVIE MS FIREFLY 65P



	CE	BW	WW	YW	MILK	TM	MCE	SC	CowWt	Stay	MPI	FMI	REA	Fat	Marb
EPD	+2.3	+2.5	+41.4	+70.7	+18.0	+38.7	+1.8	+0.4	+34.1	-1.1		+127.1	+0.19	+0.003	+0.04

53 HARVIE MS GREEN 61T

C02906711 February 15 2007 BW: 91 lbs

CVIH 61T

HARVIE LADIES MAN 4L
HARVIE RAFTSMAN 16R
 HARVIE MISS FIREFLY 51F

BR DM CHANNING ET
HARVIE MS GREEN 148R
 HARVIE MISS GREEN 71G

HARVIE HILLS 68H
 HARVIE MISS JULIE 9J
 HARVIE DEYNOTE 61D
 HARVIE MISS NYLON 1Y
 REMITALL ONLINE 122L
 DM L1 DOMINETTE 820
 HARVIE EXTRA 35E
 MISS CRAIGIE TRUSTMARK 10Y



	CE	BW	WW	YW	MILK	TM	MCE	SC	CowWt	Stay	MPI	FMI	REA	Fat	Marb
EPD	-2.7	+7.7	+47.7	+88.3	+13.7	+37.5	-0.4	+0.4	+50.9	-2.9	+135.3	+172.6	+0.25	-0.039	-0.09

All the Raftsmen daughters that we have sold have topped our fall sale. This is a beautiful young Raftsmen daughter with a great udder and a super cow family behind her. Ms Green 119X is a clean fronted stylish heifer that has a lot of future ahead of her.

Pasture exposed May 25 to July 1 to Harvie Sensation 26S. Preg tested, due March.

53A HARVIE MS GREEN 119X

C02941907 March 04 2010 BW: 80 lbs

CVIH 119X

MC RANGER 9615
HARVIE TARGET ET 173T
 HARVIE MISS HILARY 90H

CIRCLE-D WRANGLER 832W
 SBF ROYAL GYPSY
 HARVIE EXTRA 35E
 CROMDALE 1Z TAMARACK 25B

LOT 53A

	CE	BW	WW	YW	MILK	TM	MCE	SC	CowWt	Stay	MPI	FMI	REA	Fat	Marb
EPD	-1.4	+5.2	+44.2	+78.7	+15.7	+37.8	-0.6	+0.6	+40.2	-2.2		+149.9	+0.25	-0.020	-0.01

LOT 54 - Right to Flush 51F



7W - Son of 51F



65P - Daughter of 51F



16R - Son of 51F

RIGHT TO FLUSH - HARVIE MISS FIREFLY 51F

C02668537

March 18 1996

BW: 90 lbs

CVIH 51F

REMITALL KEYNOTE 20X
HARVIE DEYNOTE 61D
MISS CRAIGIE TRUSTMARK 10Y

REMITALL TEAMSTER 9T
REMITALL PATRICIA 99P
TRUSTMARK
PLV MISS ROSE PLUS 16S

DURALTA 359S NYLON 16W
HARVIE MISS NYLON 1Y
CHSF 4R MISS CHOICE 11U

KILMORLIE 12P STEEL ET 359S
DURALTA 21M GOLDETTA 26P
RBI 18L JR 4R
CHSF 53M MISS CHOICE 51R

	CE	BW	WW	YW	MILK	TM	MCE	SC	CowWt	Stay	MPI	FMI	REA	Fat	Marb
EPD	-0.8	+3.7	+38.1	+74.9	+16.7	+35.8	+1.1	+0.5	+20.0	+1.3	+142.1	+132.5	+0.23	-0.002	+0.01

What an opportunity! Here is a chance to flush the great Firefly 51F - the cow that has formed our operation. On twelve 51F progeny sold, we have averaged over \$34,000, with one son selling for a record \$80,500 for a 1/3 interest (Harvie Tailor Made ET 7W). Almost all the animals in the sale that we have on offer go back to this great cow. Firefly has averaged 12 embryos per flush.

We are guaranteeing 6 exportable embryos. If more than 10 exportable embryos are flushed, the remainder of embryos and cost will be split between Harvie Ranching and the purchaser. You can use any bull that we own for free, or you can supply your own semen on the bull of your choice at your cost. Purchaser is responsible for all flushing costs (except if she flushes over 10 embryos, then Harvie Ranching will be responsible for its share of the flushing costs). Flush to be completed in the Spring of 2011, approximately 60 days after she calves.



LOT 54A

4 EXPORTABLE EMBRYOS

NJW FHF 9710 TANK 45P (971045P)

X

HARVIE MISS FIREFLY 51F (CVIH 51F)

FHF 8403 STARBUCK 19H
NJW FHF 9710 TANK 45P
GV 579 VICTORIA 9710

DR ACHIEVER 8403
FHF RUTH 162A 18E
ANHINGA VIC 69R 579
GV 2B WHITNEY 9533

HARVIE DEYNOTE 61D
HARVIE MISS FIREFLY 51F
HARVIE MISS NYLON 1Y

REMITALL KEYNOTE 20X
MISS CRAIGIE TRUSTMARK 10Y
DURALTA 359S NYLON 16W
CHSF 4R MISS CHOICE 11U

PEDIGREE ESTIMATES:

45P - Sire of Embryos

	CE	BW	WW	YW	MILK	TM	MCE	SC	CowWt	Stay	MPI	FMI	REA	Fat	Marb
EPD	-0.8	+4.2	+44.4	+76.0	+19.3	+41.5	+0.6	+0.5	+27.3	0.0	148.5	160.2	+0.43	-0.033	0.00

LOT 55 - Right to Flush 69S



LOT 55

RIGHT TO FLUSH - HARVIE DAN MS FIREFLY 69S

C02884409

March 02 2006

BW: 75 lbs

CVIH 69S

REMITALL ONLINE 122L
BR DM CHANNING ET
DM L1 DOMINETTE 820

HARVIE LADIES MAN 4L
HARVIE MS FIREFLY 65P
HARVIE MISS FIREFLY 51F

REMITALL EMBRACER 8E
REMITALL CATALINA 24H
REMITALL KEYNOTE 20X
DM L1 DOMINETTE 518

HARVIE HILLS 68H
HARVIE MISS JULIE 9J
HARVIE DEYNOTE 61D
HARVIE MISS NYLON 1Y

Here is the chance to flush one of the most up and coming cows in our herd. Her first calf was Harvie DAN Ricochet 167U, Reserve Spring Bull Calf Champion at Denver. She is the dam to three of our sale features in the sale. She is a moderate framed cow that is as stout as they come with a beautiful udder. We are guaranteeing 6 exportable embryos. We will provide free semen on any bull that we own. If the purchaser chooses to use a different bull, they are responsible for the semen at their cost. Purchaser is responsible for all flushing costs. She is open and ready to flush.

Owned with DAN Polled Herefords, ND.

	CE	BW	WW	YW	MILK	TM	MCE	SC	CowWt	Stay	MPI	FMI	REA	Fat	Marb
EPD	+2.0	+3.1	+48.5	+84.5	+20.5	+44.8	+2.8	+0.4	+34.1	-1.5	+150.3	+150.1	+0.55	-0.010	+0.02



167U - Son of 69S



Lot 41 - Son of 69S



Lot 40 - Son of 69S



Lot 43 - Daughter of 69S

LOT 56 - Right to Flush 102U



102U as a bred heifer



34R - Dam of 102U

LOT 56

RIGHT TO FLUSH - HARVIE MS NYLON 102U

C02912986

March 14 2008

BW: 86 lbs

CVIH 102U

HARVIE HILLS 68H
HARVIE LADIES MAN 4L
HARVIE MISS JULIE 9J

BRL CALL 100L
HARVIE MS NYLON ET 34R
HARVIE MISS NYLON 1Y

HARVIE EXTRA 35E
HARVIE MISS ANGIE 5A
HARVIE GOVERNOR 40G
HARVIE MISS GINGER 10G
H 8E EMBRACER 8006
BRL DELUXIE 100A
DURALTA 359S NYLON 16W
CHSF 4R MISS CHOICE 11U

	CE	BW	WW	YW	MILK	TM	MCE	SC	CowWt	Stay	MPI	FMI	REA	Fat	Marb
EPD	+1.2	+5.1	+42.6	+71.4	+23.5	+44.8	-1.1	+0.5	+33.5	-1.5	+145.9	+166.3	+0.18	-0.038	+0.04

Just like a fine wine, Ms Nylon keeps getting better with age. Last year, 102U sold for \$12,000 (for a half interest) as a bred heifer and then went on to be Canadian National Reserve Junior Champion Female. This year, we plan on taking 102U and calf out again to Agribition and they are definitely going to be able hold their own. We are guaranteeing 6 exportable embryos. We will provide free semen on any bull that we own. If purchaser chooses to use a different bull, they are responsible for the semen at their cost. Purchaser is responsible for all flushing costs. Flush will be completed in the Spring of 2011, approximately 60 days after she calves.

Owened with South Alder Farms and North Bluff Farms Inc, BC.



PEDIGREE ESTIMATES:

7W - Sire of Embryos

	CE	BW	WW	YW	MILK	TM	MCE	SC	CowWt	Stay	MPI	FMI	REA	Fat	Marb
EPD	-0.1	+4.9	+47.3	+80.9	+20.3	+43.9	-0.5	+0.5	+37.7	-0.9			+0.27	-0.014	0.00

LOT 56A

2 EXPORTABLE EMBRYOS

HARVIE TAILOR MADE ET 7W (CVIH 7W)

X

HARVIE MS NYLON 102U (CVIH 102U)

HARVIE TRAVELER 69T
HARVIE TAILOR MADE ET 7W
HARVIE MISS FIREFLY 51F

HARVIE LADIES MAN 4L
HARVIE MISS FIREFLY 102U
HARVIE MS NYLON ET 34R

KAIRURU ABERDEEN 03 0047
HARVIE PEARL 129P
HARVIE DEYNOTE 61D
HARVIE MISS NYLON 1Y
HARVIE HILLS 68H
HARVIE MISS JULIE 9J
BRL CALL 100L
HARVIE MISS NYLON 1Y

LOT 57

2 EXPORTABLE EMBRYOS (U.S ONLY)

TH 75J 243R BAILOUT 144U ET (144U)

X

HARVIE MS FIREFLY 65P (CVIH 65P)

TH SHR 605 57G BISMARCK 243R ET

TH 75J 243R BAILOUT 144U ET

KB 615C NICKY 75J

HARVIE LADIES MAN 4L

HARVIE MS FIREFLY 65P

HARVIE MISS FIREFLY 51F

RU 20X BOULDER 57G

YY 125Y PRIMROSE 605F

SQUARE-D FULLBACK 615C

KILMORLE 359S NICKY 713D

HARVIE HILLS 68H

HARVIE MISS JULIE 9J

HARVIE DEYNOTE 61D

HARVIE MISS NYLON 1Y

PEDIGREE ESTIMATES:

	CE	BW	WW	YW	MILK	TM	MCE	SC	CowWt	Stay	MPI	FMI	REA	Fat	Marb
EPD	+2.7	+3.2	+43.1	+77.6	+20.5	+42.1	+2.1	+0.8					+0.16	-0.008	+0.01

This could be a very exciting cross. Bailout was the high selling bull in the Topp Herefords Bull sale 2 years ago. Firefly 65P is an eye catching female that raises herd bulls, show heifers and donor cows. There is a daughter and several calves from a daughter of 65P in the sale that are sale features.



65P - Donor Cow



144U - Sire of Embryos

LOT 58

4 EXPORTABLE EMBRYOS

HARVIE TAILOR MADE ET 7W (CVIH 7W)

X

HARVIE MISS PERFECTION 30P (CVIH 30P)

HARVIE TRAVELER 69T

HARVIE TAILOR MADE ET 7W

HARVIE MISS FIREFLY 51F

HARVIE LADIES MAN 4L

HARVIE MISS PERFECTION 30P

HARVIE GWEN MARVEL 6G

KAIRURU ABERDEEN 03 0047

HARVIE PEARL 129P

HARVIE DEYNOTE 61D

HARVIE MISS NYLON 1Y

HARVIE HILLS 68H

HARVIE MISS JULIE 9J

HARVIE DEYNOTE 61D

HARVIE MISS ELSIE 7E

PEDIGREE ESTIMATES:

	CE	BW	WW	YW	MILK	TM	MCE	SC	CowWt	Stay	MPI	FMI	REA	Fat	Marb
EPD	-0.5	+4.2	+47.5	+81.1	+19.3	+43.0	+0.5	+0.5	+34.9	-0.9			+0.26	-0.002	+0.01

This is one of the first times you will be able to get your hands on Tailor Made progeny. 30P has raised us 3 sons that are all working in purebred operations and a daughter that topped our fall sale. Look for these calves to be dark and good.



30P - Donor Cow



46U - Daughter of donor cow 30P. Sold to Bailey Edenburn for \$8000.



HARVIE TAILOR MADE ET 7W

C02927239 January 28 2009 BW: 94 lbs
CVIH 7W

KAIRURU ABERDEEN 03 0047
HARVIE TRAVELER 69T
HARVIE PEARL 129P

HARVIE DEYNOTE 61D
HARVIE MISS FIREFLY 51F
HARVIE MISS NYLON 1Y

LEELANDS TRANSITION T7
KAIRURU PLUM T44
LEVELDALE KODIAK 23C ET 19K
EASTON 26Y IRON LADY 43A
REMITALL KEYNOTE 20X
MISS CRAIGIE TRUSTMARK 10Y
DURALTA 359S NYLON 16W
CHSF 4R MISS CHOICE 11U

\$80,500 1/3 interest

	CE	BW	WW	YW	MILK	TM	MCE	SC	CowWt	Stay	MPI	FMI	REA	Fat	Marb
EPD	-1.3	+4.7	+52.0	+90.4	+17.0	+43.0	+0.1	+0.5	+41.9	-0.3			+0.35	+0.010	-0.04

Owned with the Tailor Made Syndicate.



HARVIE RAFTSMAN 16R

C02865314 February 08 2005 BW: 83 lbs
CVIH 16R

HARVIE HILLS 68H
HARVIE LADIES MAN 4L
HARVIE MISS JULIE 9J

HARVIE DEYNOTE 61D
HARVIE MISS FIREFLY 51F
HARVIE MISS NYLON 1Y

HARVIE EXTRA 35E
HARVIE MISS ANGIE 5A
HARVIE GOVERNOR 40G
HARVIE MISS GINGER 10G
REMITALL KEYNOTE 20X
MISS CRAIGIE TRUSTMARK 10Y
DURALTA 359S NYLON 16W
CHSF 4R MISS CHOICE 11U

\$17,000 1/2 interest

	CE	BW	WW	YW	MILK	TM	MCE	SC	CowWt	Stay	MPI	FMI	REA	Fat	Marb
EPD	+0.7	+3.6	+49.5	+79.9	+22.7	+47.5	+0.1	+0.4	+40.3	-1.3	+153.5	+147.6	+0.30	-0.014	+0.03

Owned with Stone Ridge Manor Farms, PA, and Randall Land & Cattle Co., MD.



HARVIE TRAVELER 69T

C02895589 February 21 2007 BW: 101 lbs
CVIH 69T

LEELANDS TRANSITION T7
KAIRURU ABERDEEN 03 0047
KAIRURU PLUM T44

LEVELDALE KODIAK 23C ET 19K
HARVIE PEARL 129P
EASTON 26Y IRON LADY 43A

LEELANDS QUINN Q24
LEELANDS PRINCESS P56
KAIRURU RICARDO R46 (ET)
KAIRURU PLUM P11
JSF 37 271 DEVO 23C
LEVELDALE MISS VARSITY VIC 26D
EASTON MORE SUMMIT 26Y
VVHF MISS STELLA 7W

\$45,500 1/2 interest

	CE	BW	WW	YW	MILK	TM	MCE	SC	CowWt	Stay	MPI	FMI	REA	Fat	Marb
EPD	-1.7	+5.6	+65.8	+105.9	+17.4	+50.3	-1.0	+0.5	+63.8	-1.9	+163.9	+125.5	+0.47	+0.021	-0.10

Owned with Johner Stock Farms, SK, Becker Polled Herefords, AB and the Traveler Syndicate.

HARVIE LADIES MAN 4L

C02780997 March 06 2001 BW: 94 lbs

CVIH 4L

HARVIE EXTRA 35E
HARVIE HILLS 68H
 HARVIE MISS ANGIE 5A

 HARVIE GOVERNOR 40G
HARVIE MISS JULIE 9J
 HARVIE MISS GINGER 10G

HARVIE CLUB MED 11C
 HARVIE MISS NYLON 1Y
 REMITALL LEGACY ET 187X
 WALPOLE MISS COED 38Y

 HARVIE DEYNOTE 61D
 HARVIE ALICE 12A
 HARVIE EXTRA 35E
 EASTON 26Y IRON LADY 43A



Multi-Trait Leader

	CE	BW	WW	YW	MILK	TM	MCE	SC	CowWt	Stay	MPI	FMI	REA	Fat	Marb
EPD	+2.4	+4.4	+46.1	+72.8	+27.3	+50.4	-1.3	+0.5	+38.7	-3.4	+148.7	+160.8	+0.04	-0.026	+0.13

Owned with Twin View Polled Herefords, MB

HARVIE DAN T-BONE 196T

C02900184 April 24 2007 BW: 85 lbs

CVIH 196T

LEELANDS TRANSITION T7
KAIRURU ABERDEEN 03 0047
 KAIRURU PLUM T44

HARVIE LADIES MAN 4L
HARVIE MS FIREFLY 65P
 HARVIE MISS FIREFLY 51F

LEELANDS QUINN Q24
 LEELANDS PRINCESS P56
 KAIRURU RICARDO R46 (ET)
 KAIRURU PLUM P11

 HARVIE HILLS 68H
 HARVIE MISS JULIE 9J
 HARVIE DEYNOTE 61D
 HARVIE MISS NYLON 1Y



\$22,500 1/2 interest

	CE	BW	WW	YW	MILK	TM	MCE	SC	CowWt	Stay	MPI	FMI	REA	Fat	Marb
EPD	+0.6	+4.4	+49.0	+88.6	+14.2	+38.7	-0.5	+0.6	+21.7	-0.4	+148.8	+121.5	+0.26	+0.023	+0.03

Owned with DAN Polled Herefords, ND, Lorenzen Farms, IL, Albin Farms, IL, and the T-Bone Tribe.

HARVIE DAN RICOCHET 167U

C02912999 April 04 2008 BW: 88 lbs

CVIH 167U

KAIRURU ABERDEEN 03 0047
HARVIE SENSATION 26S
 HARVIE JACCI 82J

BR DM CHANNING ET
HARVIE DAN MS FIREFLY 69S
 HARVIE MS FIREFLY 65P

LEELANDS TRANSITION T7
 KAIRURU PLUM T44
 HARVIE GOVERNOR 40G
 HARVIE MISS FIREFLY 51F

 REMITALL ONLINE 122L
 DM L1 DOMINETTE 820
 HARVIE LADIES MAN 4L
 HARVIE MISS FIREFLY 51F



Reserve Spring Bull Calf Champion - Denver, 2009

	CE	BW	WW	YW	MILK	TM	MCE	SC	CowWt	Stay	MPI	FMI	REA	Fat	Marb
EPD	+1.5	+2.8	+47.7	+84.5	+14.5	+38.4	+2.3	+0.5	+39.8	-1.0	+142.8	+124.9	+0.42	+0.017	+0.05

Owned with DAN Polled Herefords, ND, Lorenzen Farms, IL, Burns Polled Herefords, IL, and Nature's Acres, IL.

HARVIE RANCHING HERDSIRES



HARVIE SENSATION 26S

C02884231 February 11 2006 BW: 94 lbs
CVIH 26S

LEELANDS TRANSITION T7
KAIRURU ABERDEEN 03 0047
KAIRURU PLUM T44

LEELANDS QUINN Q24
LEELANDS PRINCESS P56
KAIRURU RICARDO R46 (ET)
KAIRURU PLUM P11

HARVIE GOVERNOR 40G
HARVIE JACCI 82J
HARVIE MISS FIREFLY 51F

HARVIE DEYNOTE 61D
HARVIE ALICE 12A
HARVIE DEYNOTE 61D
HARVIE MISS NYLON 1Y

	CE	BW	WW	YW	MILK	TM	MCE	SC	CowWt	Stay	MPI	FMI	REA	Fat	Marb
EPD	-0.3	+3.2	+38.9	+75.9	+8.5	+28.0	+1.5	+0.5	+21.4	+0.3	+130.9	+101.1	+0.16	+0.034	+0.06



HARVIE WILLY 73W

C02925765 February 19 2009 BW: 95 lbs
CVIH 73W

KAIRURU ABERDEEN 03 0047
HARVIE TRAVELER 69T
HARVIE PEARL 129P

LEELANDS TRANSITION T7
KAIRURU PLUM T44
LEVELDALE KODIAK 23C ET 19K
EASTON 26Y IRON LADY 43A

BRL CALL 100L
HARVIE MS NYLON ET 34R
HARVIE MISS NYLON 1Y

H 8E EMBRACER 8006
BRL DELUXIE 100A
DURALTA 359S NYLON 16W
CHSF 4R MISS CHOICE 11U

	CE	BW	WW	YW	MILK	TM	MCE	SC	CowWt	Stay	MPI	FMI	REA	Fat	Marb
EPD	+0.3	+4.3	+46.7	+82.2	+18.6	+42.0	-0.4	+0.5	+35.8	-0.3	+148.8	+146.7	+0.36	-0.014	-0.06

Owned with Howard Hawkwood, AB



HARVIE WINSTON 5W

C02930139 January 22 2009 BW: 83 lbs
CVIH 5W

REMITALL ONLINE 122L
WILGOR 55K NORTHEASTERN OL 2N
WILGOR 174H KEYLINE 29F 55K

REMITALL EMBRACER 8E
REMITALL CATALINA 24H
CS BOOMER 29F
STAR STYLISH LADY 174H

OTAPAWA SKYMATE 2046 (ET)
HARVIE MS FIREFLY 30T
HARVIE JACCI 82J

SKY 236G PREMIER 132K
OTAPAWA LEONORA P23
HARVIE GOVERNOR 40G
HARVIE MISS FIREFLY 51F

	CE	BW	WW	YW	MILK	TM	MCE	SC	CowWt	Stay	MPI	FMI	REA	Fat	Marb
EPD	+2.3	+2.0	+46.8	+70.5	+21.5	+44.9	+5.0	+0.7	+40.2	-0.7	+150.2	+129.0	+0.38	-0.002	+0.05

Owned with Kraus Bros, AB.



HARVIE TARGET ET 173T

C02909060 April 04 2007 BW: 98 lbs
CVIH 173T

CIRCLE-D WRANGLER 832W
MC RANGER 9615
SBF ROYAL GYPSY

BAR H L1 CHANCE 55S
CIRCLE D 193 SILHOUETTE 335S
BEARTOOTH NOMAD 421N
SBF RYL TRAMS AM 8118

HARVIE EXTRA 35E
HARVIE MISS HILARY 90H
CROMDALE 12Z TAMARACK 25B

HARVIE CLUB MED 11C
HARVIE MISS NYLON 1Y
CROMDALE R11 TRAVELER 12
CROMDALE 12R IVY 14X

	CE	BW	WW	YW	MILK	TM	MCE	SC	CowWt	Stay	MPI	FMI	REA	Fat	Marb
EPD	-1.2	+3.8	+43.3	+73.7	+17.7	+39.4	-1.4	+0.9	+29.4	-1.6	+140.7	+132.1	+0.26	-0.004	+0.06

Owned with Kraus Bros, AB.

2009 SALE HIGHLIGHTS



HARVIE TAILOR MADE ET 7W
\$80,500 for a 1/3 interest to the Tailor Made Syndicate



HARVE MS NYLON 102U
\$12,750 for a 1/2 interest to South Alder Farms & North Bluff Farms, BC.



HARVIE MS RONDA 41W
\$11,000 to OVHF & Vern Featherstone, SK.



HARVIE MS MEDONTE 202W
\$5700 to Medonte Highlands Polled Herefords, ON



HARVIE WHIRL WIND ET 21W
\$4400 to Willow Pond Farms, NS



HARVIE MS FIREFLY 170S
\$5200 to Lamb Brothers Beef, WI

SHOW HIGHLIGHTS FROM HARVIE RANCHING & CUSTOMERS



HARVIE TRAVELER 69T
CWA Reserve Champion Bull, 2009
Denver Reserve Senior Champion Bull, 2010
CWA Get-A-Sire, 2009



HARVIE MS NYLON 102U
CWA Reserve Jr. Champion Female



CWA Champion Female
Bull calf at side sired by Harvie Traveler for WLB Farms, MB



Harvie Traveler Son
CWA Sr. Bull Calf Champion, 2009 for NBG Polled Herefords, ON
\$16,250 for a 1/2 interest



Harvie Traveler Daughters
Denver Reserve Champion Pen of Heifers
Dakitch Farms, MN



Harvie Firefly 65P Daughter
Kansas Royal Reserve Jr. Champion Female for DAN Polled Herefords, ND

