

# HARVIE RANCHING

## First Annual Bull Sale

1:00pm, March 29, 2010

At the Ranch, Olds, AB



# Welcome to the First Annual Harvie Ranching Bull Sale



Although this is our first on-farm bull sale, we are not new to the bull business, as we've been producing seed stock cattle for over 35 years. In this time, we've gained many valuable customers and friends along the way who have shown great support to our program.

Over the years we've always stuck to our principals with functional cattle, in turn, we have a very low maintenance herd. There have been no free rides at the ranch, as we have culled hard to a point where we have less cattle to cull. The bull pen is an example of high standard traits, they are very easy doing and structurally sound from the ground up. We have worked hard to make sure these bulls will fit into your program. They have been worked with a horse, dog, quad, and on foot when need be.

When selecting herd sires, we've gone to great lengths to source desired genetics from around the world. In an effort to make our cattle more feed efficient, we travelled to New Zealand where cattle are mainly grass fed. We found that by selecting for feed efficiency traits we have decreased feed costs, while producing a fleshy, high performing calf crop. For added consistency we have created a line bred program, utilizing our top bull calf each year. We evaluate the efficacy of our future herd sires when they hit the ground as calves by culling on birth weight, vigour, health and calving ease.

We are very excited about our Charolais bull offering this year. We are featuring the very first group of Performer calves for sale in North America. These impressive calves have tons of hair, eye appeal and growth. In the red division, we have the first Trigger and High Times calves on offer. These dark red bulls will cross well with any cow herd wanting to keep good color. When trying to maximize dollars per cow, now is the time to be investing in Charolais bulls, since their calves are in high demand. From past customer reports, first time use of Harvie Ranching Charolais bulls increased weaning weight averages by 14% overall, returning more dollars in their pocket.

Our Hereford bulls represent the "new era of Polled Herefords" with their dark coloring, calving ease, ease of fleshing and overall performance. The line up of bulls on offer are dark red with lots of pigment. This is the first chance to step into a Traveler son, Traveler calves are extremely popular with their high capacity and dark red color.

Take advantage of our Sight Unseen Purchase Plan. If you are unable to attend the sale, we will work with you to help select the bull that will meet your needs. If you aren't happy with the bull that was selected for you we will replace or refund your purchase. We guarantee full satisfaction upon delivery or you don't own them.

We will also be broadcasting our sale live on the internet so you can watch and bid online. This catalogue can also be viewed online at [www.harvieranching.com](http://www.harvieranching.com) and [www.hereford.ca](http://www.hereford.ca).

Please feel free to come by anytime ahead of the sale to view the bulls and their mothers.

*Thanks,*

*The Harvie Family*

*Ian, Marlene, Scott, Cole, Jill, Will, Eric, and Sheyla*

**Harvie Ranching**

**Ian & Marlene, Scott, Cole & Jill**

**RR #2, Olds, AB T4H 1P3**

**Office: 403-335-4180 Fax: 403-335-3119**

**Ian: 403-507-3886 Scott: 403-586-4278 Cole: 403-994-1314**

**Email: [harvieranch@xplornet.com](mailto:harvieranch@xplornet.com)**

**[www.harvieranching.com](http://www.harvieranching.com)**





# Important Sale Information

## Time and Place

1 p.m., Monday, March 29, 2010 at Harvie Ranching

Lunch will be provided before the sale, as well as some warm hospitality.

From Olds: 7 miles south on Hwy 2A. Turn west (right) on Bergen Road (Olds-Didsbury Airport) for 9 miles to Range Road 3.1 and turn south (left). Continue for 1/2 mile, sale barn is on the west (right).

**Hotel Accommodations:** Best Western Motel (Olds) 403-556-5900, Ramada Hotel (Olds) 403-507-8349, Didsbury Country Inn (Didsbury) 403-335-8088.

**Airports:** Calgary International Airport - Harvie Ranching is located just 45 mins. drive north of Calgary International Airport. Olds also has a small craft municipal airport.

**EPDs:** Please note that EPDs may change from the time the catalogue is printed and registration papers are transferred. EPDs are not comparable between breeds.

## Sale Staff:

Auctioneer: Ryan Dorran - 403-507-6483

Ring Service: Rod McLeod - 403-540-7986, Derick VanSickle - 403-357-7571

Consultant: Tim Bullick - 403-350-9858

## Sale Day Phones:

Ian Harvie: 403-507-3886

Cole Harvie: 403-994-1314

Scott Harvie: 403-586-4278

Jill Harvie: 403-771-3502

**Online Bidding:** Real-time viewing and bidding is available from [www.liveauctions.tv](http://www.liveauctions.tv). Buyers must create an account at least 2 days prior to the sale. Contact Jill Mader at 403-990-9187 or Brad Fahrmeier at 816-392-9241 if you have questions or require assistance.



**Harvie Ranching Bull Warranty:** Harvie Ranching guarantees to sell you a bull that has passed a semen test performed by a licensed veterinarian. Should a Harvie Ranching bull fail to be a satisfactory breeder that is unable to physically penetrate a cow or heifer, a credit will be given towards the purchase of another bull. Should you have a problem, we have spare bulls available. We guarantee to provide you with a sound breeding bull, but will not provide replacement or credit for physical injury or mismanagement. Bearing this in mind, we strongly advise you to insure your bull. If you have a problem with your purchase it must be reported by July 15, 2010. All problems must be reported to Harvie Ranching in writing. The bull must be returned to Harvie Ranching immediately when the problem is detected, at the buyer's expense. Harvie Ranching will have the bull examined by a veterinarian, and will have 60 days to prove the bull a breeder. If the bull does not prove to be a breeder, the buyer will be entitled to a complete refund of the purchase price of the bull in question. Should the bull prove to be a breeder, he will be returned to the buyer at Harvie Ranching's expense, and the matter will be considered closed. In the case of losses, Harvie Ranching will only be responsible for the original purchase price of the animal. We assume no liability, legal or otherwise, to make any compensation to the buyer.

Harvie Ranching reserves the right to in-herd semen use on any bull sold in the sale, with semen drawn at Harvie Ranching's expense, and the buyer's convenience.

## Terms and Conditions:

**Terms:** The terms of the sale are cash or cheque, payable at par at the sales location, unless satisfactory credit or invoicing arrangements have been made prior to the sale. The right of property shall not pass until settlement has been made.

**Delivery:** Harvie Ranching will deliver up to 150 miles for free, further distances will be charged at cost. Bulls may be kept at Harvie Ranching until April 30, 2010 at no charge, after that time, bulls will be kept for \$3/day. Buyers who pick up their bull within a week of sale day will receive a \$50 discount/bull.

**Insurance:** Will be available sale day through DJ Henderson & Associates (403-782-3888). We recommend that all bulls left at Harvie Ranching be insured.

**Volume Discount:** A volume discount will be applied to multiple purchases as follows:

3 bulls - 3%, 4 bulls - 4%, 5 bulls - 5%, 6 bulls - 6%, 7 bulls - 7%, 8 bulls - 8%, 9 bulls - 9%, 10+ bulls - 10%

**Announcements:** Announcements from the auctioneer will take precedence over any material printed in this catalogue.

**Registration & Transfer:** A registration certificate of the animal will be duly transferred to the purchaser.

**Liability:** The owners, their employees, sale staff, and representatives accept no liability for accidents that may occur. Persons who attend do so at their own risk.

# HEREFORD REFERENCE SIRES

## HARVIE TRAVELER 69T

**CVIH 69T** February 21, 2007 **BW: 101**

LEELANDS TRANSITION T7  
KAIRURU ABERDEEN 03 0047  
KAIRURU PLUM T44

LEVELDALE KODIAK 23C ET 19K  
HARVIE PEARL 129P  
EASTON 26Y IRON LADY 43A

LEELANDS QUINN Q24  
LEELANDS PRINCESS P56  
KAIRURU RICARDO R46 (ET)  
KAIRURU PLUM P11  
JSF 37 271 DEVO 23C  
LEVELDALE MISS VARSITY VIC 26D  
EASTON MORE SUMMIT 26Y  
VVHF MISS STELLA 7W

	CE	BW	WW	YW	MILK	TM	MCE	SC	CowWt	Stay	MPI	FMI	REA	Fat	Marb
EPD	-1.5	+5.2	+63.7	+94.9	+16.8	+48.7	-0.3	+0.6	+63.8	-1.9	+160.5	+100.7	+0.37	+0.038	-0.04
ACC	.19	.74	.60	.47	.09	-	.11	.07	.88	.80	.59	.25	.15	.09	.07



## HARVIE RAFTSMAN 16R

**CVIH 16R** February 08, 2005 **BW: 83**

HARVIE HILLS 68H  
HARVIE LADIES MAN 4L  
HARVIE MISS JULIE 9J

HARVIE DEYNOTE 61D  
HARVIE MISS FIREFLY 51F  
HARVIE MISS NYLON 1Y

HARVIE EXTRA 35E  
HARVIE MISS ANGIE 5A  
HARVIE GOVERNOR 40G  
HARVIE MISS GINGER 10G  
REMITALL KEYNOTE 20X  
MISS CRAIGIE TRUSTMARK 10Y  
DURALTA 359S NYLON 16W  
CHSF 4R MISS CHOICE 11U

	CE	BW	WW	YW	MILK	TM	MCE	SC	CowWt	Stay	MPI	FMI	REA	Fat	Marb
EPD	-0.8	+3.5	+47.5	+78.4	+22.6	+46.3	+0.9	+0.7	+40.3	-1.3	+150.8	+142.4	+0.34	-0.013	+0.00
ACC	.32	.80	.72	.67	.30	-	.20	.30	.89	.82	.68	.47	.40	.37	.34



## HARVIE SENSATION 26S

**CVIH 26S** February 11, 2006 **BW: 94**

LEELANDS TRANSITION T7  
KAIRURU ABERDEEN 03 0047  
KAIRURU PLUM T44

HARVIE GOVERNOR 40G  
HARVIE JACCI 82J  
HARVIE MISS FIREFLY 51F

LEELANDS QUINN Q24  
LEELANDS PRINCESS P56  
KAIRURU RICARDO R46 (ET)  
KAIRURU PLUM P11  
HARVIE DEYNOTE 61D  
HARVIE ALICE 12A  
HARVIE DEYNOTE 61D  
HARVIE MISS NYLON 1Y

	CE	BW	WW	YW	MILK	TM	MCE	SC	CowWt	Stay	MPI	FMI	REA	Fat	Marb
EPD	-1.2	+3.6	+39.1	+78.6	+7.6	+27.1	+2.3	+0.6	+21.4	+0.3	+130.2	+102.2	+0.18	+0.036	+0.08
ACC	.06	.50	.41	.40	.12	-	.05	.07	.74	.57	.44	.24	.21	.20	.17



## HARVIE RINGLEADER ET 27R

**CVIH 27R** February 13, 2005 **BW: 89**

REMITALL EMBRACER 8E  
REMITALL ONLINE 122L  
REMITALL CATALINA 24H

DURALTA 359S NYLON 16W  
HARVIE MISS NYLON 1Y  
CHSF 4R MISS CHOICE 11U

REMITALL ACME 10A  
PLAIN LAKE BELLE 20X 117P 5B  
MM RSM STOCKMASTER 512  
REMITALL CATALINA 139C  
KILMORLIE 12P STEEL ET 359S  
DURALTA 21M GOLDETIA 26P  
RBI 18L JR 4R  
CHSF 53M MISS CHOICE 51R

	CE	BW	WW	YW	MILK	TM	MCE	SC	CowWt	Stay	MPI	FMI	REA	Fat	Marb
EPD	+3.7	+1.8	+32.9	+63.7	+22.7	+39.1	+4.5	+1.0	-8.3	+0.5	+143.9	+157.5	+0.09	-0.025	+0.13
ACC	.20	.55	.46	.45	.26	-	.18	.17	.78	.65	.52	.32	.29	.27	.25





# 1 HARVIE TRAVELER 32W

CVIH 32W February 10, 2009 BW: 100 Adj. Sale Wt: 1380

KAIRURU ABERDEEN 03 0047  
HARVIE TRAVELER 69T  
HARVIE PEARL 129P

HARVIE LADIES MAN 4L  
HARVIE MS GREEN 75R  
HARVIE MS KAY 59K

LEELANDS TRANSITION T7  
KAIRURU PLUM T44  
LEVELDALE KODIAK 23C ET 19K  
EASTON 26Y IRON LADY 43A  
HARVIE HILLS 68H  
HARVIE MISS JULIE 9J  
HARVIE DEYNOTE 61D  
HARVIE MISS GREEN 71G

Here is one of the soggiest made calves that we have on offer. His progeny should be dark red with lots of volume and performance.



	CE	BW	WW	YW	MILK	TM	MCE	SC	CowWt	Stay	MPI	FMI	REA	Fat	Marb
EPD	-0.8	+4.4	+46.2	+75.5	+16.2	+39.3	+0.1	+0.5	+42.3	-3.5	+135.7	+123.2	+0.12	+0.004	-0.01
ACC	.07	.37	.28	.25	.07	-	.05	.04	.59	.33	.29	.13	.10	.07	.04

# 2 HARVIE WILLY 73W

CVIH 73W February 19, 2009 BW: 95 Adj. Sale Wt: 1345

KAIRURU ABERDEEN 03 0047  
HARVIE TRAVELER 69T  
HARVIE PEARL 129P

BRL CALL 100L  
HARVIE MS NYLON ET 34R  
HARVIE MISS NYLON 1Y

LEELANDS TRANSITION T7  
KAIRURU PLUM T44  
LEVELDALE KODIAK 23C ET 19K  
EASTON 26Y IRON LADY 43A  
H 8E EMBRACER 8006  
BRL DELUXIE 100A  
DURALTA 359S NYLON 16W  
CHSF 4R MISS CHOICE 11U

Willy is a herd bull in the making with his sharp markings, flawless structure and strong cow family. His maternal sister sold for \$12,500 for 1/2 interest in our fall sale and went on to be Res Jr. Champion female at Agribition.



Maternal sister to Lot 2



	CE	BW	WW	YW	MILK	TM	MCE	SC	CowWt	Stay	MPI	FMI	REA	Fat	Marb
EPD	+0.2	+4.0	+44.0	+71.3	+18.3	+40.3	+0.1	+0.6	+35.8	-0.3	+144.9	+131.1	+0.29	-0.008	-0.03
ACC	.08	.36	.27	.24	.08	-	.06	.05	.58	.32	.29	.13	.09	.06	.05

# 3 HARVIE TRAVELER 144W

CVIH 144W February 27, 2009 BW: 102 Adj. Sale Wt: 1355

KAIRURU ABERDEEN 03 0047  
HARVIE TRAVELER 69T  
HARVIE PEARL 129P

PLAIN LAKE KEYN 126B EXTRA 12E  
GROSVENOR MS SUPREME 12E 314P  
GROSVENOR MS SUPREME GS 305L

LEELANDS TRANSITION T7  
KAIRURU PLUM T44  
LEVELDALE KODIAK 23C ET 19K  
EASTON 26Y IRON LADY 43A  
REMITALL KEYNOTE 20X  
HNH 96T TRINITY ET 126B  
KFF GRAND SLAM  
GROSVENOR MS SUPREME 926Y 318H

Traveler is an outcross bull calf with a lot of future. He has been a favourite out in the pasture all summer long. His mother is a moderate framed female with a beautiful udder. This calf will make a make great addition in any operation whether it's a purebred or commercial herd.



	CE	BW	WW	YW	MILK	TM	MCE	SC	CowWt	Stay	MPI	FMI	REA	Fat	Marb
EPD	-0.2	+5.4	+51.5	+79.8	+14.7	+40.4	-1.1	+0.6	+45.9	-0.2	+149.4	+102.7	+0.22	+0.027	-0.03
ACC	.07	.37	.28	.25	.08	-	.05	.04	.58	.32	.29	.13	.09	.05	.04



## 4 HARVIE WILDFIRE ET 6W

**CVIH 6W** January 27, 2009 **BW: 78** Adj. Sale Wt: 1304

**HARVIE LADIES MAN 4L**  
**HARVIE RAFTSMAN 16R**  
**HARVIE MISS FIREFLY 51F**

**WILGOR 55K NORTHEASTERN 0L 2N** **WILGOR 174H KEYLINE 29F 55K**  
**HARVIE MS MEDONTE 1S** **REMITALL ICON 24K**  
**MHPH MS 24K PRINCESS 1195N** **MHPH MS 121J PRINCESS 314**

Here is a great heifer bull with a proven track record. His two full brothers topped our fall sale, and are now working in purebred herds. His dam and grandmother have really proven themselves as top females in our herd.



**Dam of Lot 4**

	CE	BW	WW	YW	MILK	TM	MCE	SC	CowWt	Stay	MPI	FMI	REA	Fat	Marb
EPD	-0.3	+3.6	+47.7	+81.9	+19.4	+43.2	+2.9	+0.8	+39.4	-0.4			+0.37	-0.010	+0.09
ACC	PE	PE	PE	PE	PE	PE	PE	PE	PE	PE			PE	PE	PE

## 5 HARVIE WILD CARD 48W

**CVIH 48W** February 13, 2009 **BW: 96** Adj. Sale Wt: 1441

**HARVIE LADIES MAN 4L**  
**HARVIE RAFTSMAN 16R**  
**HARVIE MISS FIREFLY 51F**

**GNF 122L LINEDRIVE ET 56N** **WALPOLE TEQUILLA ET 13A**  
**DTHF RAVIN 144R** **DTHF WLB FEDERAL 10E**  
**DTHF MACEY 144M** **TRUMAC MISS RAIDER 5J**

Performance, length, muscle and lots of hair - he's a great combination bull. His full sister sold for \$7000 for a 1/2 interest and won her class at Denver. He and his full sister were 2 of our highest performing calves both years.



**Dam of Lot 5**

	CE	BW	WW	YW	MILK	TM	MCE	SC	CowWt	Stay	MPI	FMI	REA	Fat	Marb
EPD	-0.5	+4.3	+49.0	+78.0	+17.8	+42.3	+1.4	+0.7	+40.7	-0.1	+150.7	+128.6	+0.27	+0.000	-0.01
ACC	.09	.37	.28	.26	.11	-	.07	.08	.59	.33	.30	.16	.13	.11	.10

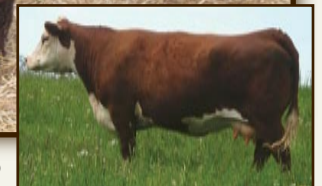
## 6 HARVIE WHISKEY MAC 49W

**CVIH 49W** February 14, 2009 **BW: 96** Adj. Sale Wt: 1306

**HARVIE LADIES MAN 4L**  
**HARVIE RAFTSMAN 16R**  
**HARVIE MISS FIREFLY 51F**

**MC RANGER 9615** **CIRCLE-D WRANGLER 832W**  
**HARVIE MS HILARY ET 104T** **SBF ROYAL GYPSY**  
**HARVIE MISS HILARY 90H** **HARVIE EXTRA 35E**  
**CROMDALE 1Z TAMARACK 25B**

Just off a first calf heifer, but he tips down the scale. A dark red, deep bodied calf that comes from our Hilary donor cow family.



**Grandmother of Lot 6**

	CE	BW	WW	YW	MILK	TM	MCE	SC	CowWt	Stay	MPI	FMI	REA	Fat	Marb
EPD	-2.3	+5.2	+52.0	+87.1	+21.0	+47.0	-0.9	+0.9	+56.3	-3.3	+147.2	+149.9	+0.38	-0.013	+0.04
ACC	.10	.36	.28	.26	.12	-	.08	.10	.59	.33	.31	.17	.14	.12	.11



## 7 HARVIE RAFTSMAN 190W

CVIH 190W April 01, 2009

BW: 95 Adj. Sale Wt: 1341

HARVIE LADIES MAN 4L  
HARVIE RAFTSMAN 16R  
HARVIE MISS FIREFLY 51F

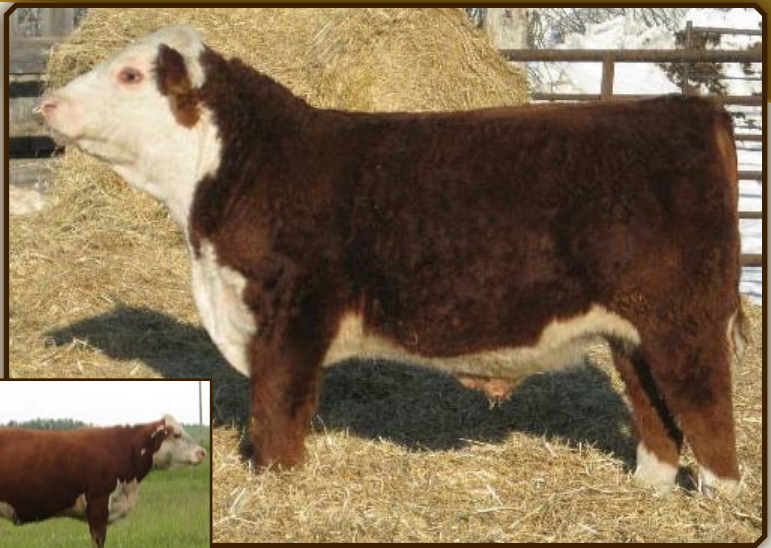
RU 20X HUDSON 57H  
OBF MYSTIQUE 61K  
OBF 26B HILLARY 62C 48F

HARVIE HILLS 68H  
HARVIE MISS JULIE 9J  
HARVIE DEYNOTE 61D  
HARVIE MISS NYLON 1Y  
REMITALL KEYNOTE 20X  
RU 10A ELM 57E  
OBF REGENCY 26B  
OBF 5A HILLARY 37A 62C

He is a younger calf, but probably the highest performing calf on offer. His dam has produced us one of the highest performing calves year after year. His full sister sold \$6000 last year in our fall sale.



Dam of Lot 7



	CE	BW	WW	YW	MILK	TM	MCE	SC	CowWt	Stay	MPI	FMI	REA	Fat	Marb
EPD	-3.7	+6.5	+55.2	+85.8	+19.4	+47.0	-1.0	+0.7	+39.4	-2.2	+155.2	+138.4	+0.43	-0.011	-0.05
ACC	.09	.37	.28	.26	.13	-	.07	.09	.59	.33	.31	.16	.13	.11	.10

## 8 HARVIE WINSTON 5W

CVIH 5W January 22, 2009

BW: 83 Adj. Sale Wt: 1374

REMITALL ONLINE 122L  
WILGOR 55K NORTHEASTERN OL 2N  
WILGOR 174H KEYLINE 29F 55K

OTAPAWA SKYMATE 2046 (ET)  
HARVIE MS FIREFLY 30T  
HARVIE JACCI 82J

REMITALL EMBRACER 8E  
REMITALL CATALINA 24H  
CS BOOMER 29F  
STAR STYLISH LADY 174H  
SKY 236G PREMIER 132K  
OTAPAWA LEONORA P23  
HARVIE GOVERNOR 40G  
HARVIE MISS FIREFLY 51F

Long bodied, heavy muscled, and out of a first calf heifer with the most perfect udder you ever did see. His dam is a maternal sister to our herd sire Harvie Sensation 26S.



	CE	BW	WW	YW	MILK	TM	MCE	SC	CowWt	Stay	MPI	FMI	REA	Fat	Marb
EPD	+2.1	+2.1	+47.3	+74.9	+18.6	+42.3	+5.4	+0.8	+40.2	-0.7	+147.7	+130.8	+0.40	+0.003	+0.09
ACC	.09	.37	.28	.26	.11	-	.07	.06	.58	.32	.30	.15	.12	.09	.08

## 9 HARVIE WORKHORSE 20W

CVIH 20W February 05, 2009

BW: 83 Adj. Sale Wt: 1322

REMITALL ONLINE 122L  
WILGOR 55K NORTHEASTERN OL 2N  
WILGOR 174H KEYLINE 29F 55K

HARVIE RAFTSMAN 16R  
HARVIE MS TARA 21T  
HARVIE PURPLE 5P

REMITALL EMBRACER 8E  
REMITALL CATALINA 24H  
CS BOOMER 29F  
STAR STYLISH LADY 174H  
HARVIE LADIES MAN 4L  
HARVIE MISS FIREFLY 51F  
HARVIE KNOCKOUT 98K  
HARVIE MS MARYANN 89M

Moderate framed calf that is as stout as they come. He is off of a Raftsman first calf heifer that has a beautiful udder. He would work great on heifers.



	CE	BW	WW	YW	MILK	TM	MCE	SC	CowWt	Stay	MPI	FMI	REA	Fat	Marb
EPD	+2.5	+2.0	+48.2	+75.9	+18.7	+42.8	+4.5	+0.9	+44.7	-0.4	+149.2	+126.2	+0.37	+0.011	+0.13
ACC	.10	.37	.29	.27	.11	-	.08	.08	.59	.33	.31	.16	.13	.10	.09



# 10 HARVIE AXA EARLY RISER 1W

**GVH 1W** January 01, 2009 **BW: 92** Adj. Sale Wt: 1458

**STAR OBF BOGART 5L**  
**STAR 5L BOOSTER 187R**  
**RCH MISS ADVANCE 1021**

**REMITALL PATRIOT ET 13P**  
**BAR-J-M LA SENZA 14S**  
**MHPH MS 122L JADE 113N**

**CS BOOMER 29F**  
**NJW 1Y LARIAT 41E**  
**HH ADVANCE 767G 1ET**  
**RB L1 DOMINETTE 4059**  
**REMITALL OLYMPIAN ET 262L**  
**REMITALL GINGER 23G**  
**REMITALL ONLINE 122L**  
**MHPH MS 60D JADE 110K**

Early January calf that is full of length and muscle. His mother comes from one of the top cow families at Bar J-M Herefords in Ontario. Owned with AXA Polled Herefords, NB.



	CE	BW	WW	YW	MILK	TM	MCE	SC	CowWt	Stay	MPI	FMI	REA	Fat	Marb
EPD	-1.7	+4.3	+61.8	+101.1	+20.8	+51.7	+2.7	+1.1	+46.7	+0.3	+171.2	+160.0	+0.57	-0.008	+0.11
ACC	.07	.36	.26	.23	.09	-	.06	.07	.58	.32	.29	.13	.10	.08	.07

# 11 OVHF ROUTE 66 25W

**JILL 25W** February 06, 2009 **BW: 98** Adj. Sale Wt: 1375

**MC RANGER 9615**  
**REMITALL ROUTE 66 ET 346R**  
**REMITALL CATALINA 24H**

**REMITALL PLATINUM 127P**  
**REMITALL MARY 198S**  
**MHPH MS 24K MARY 312P**

**CIRCLE-D WRANGLER 832W**  
**SBF ROYAL GYPSY**  
**MM RSM STOCKMASTER 512**  
**REMITALL CATALINA 139C**  
**REMITALL ONLINE 122L**  
**REMITALL MARVEL EUDORA 125E**  
**REMITALL ICON 24K**  
**SADDLE-VALLEY 46B MARY 161J**

This bull calf is longer than a freight train with lots of muscle. On both sides of his pedigree he has National Champions. He will work on heifers too.



	CE	BW	WW	YW	MILK	TM	MCE	SC	CowWt	Stay	MPI	FMI	REA	Fat	Marb
EPD	-3.5	+5.1	+49.8	+86.3	+16.4	+41.3	+2.9	+1.1	+56.1	-0.6	+146.4	+153.3	+0.38	-0.013	+0.15
ACC	.11	.38	.29	.27	.10	-	.09	.09	.58	.32	.30	.16	.11	.08	.08

# 12 HARVIE WING MAN 128W

**GVH 128W** March 05, 2009 **BW: 83** Adj. Sale Wt: 1280

**KAIRURU ABERDEEN 03 0047**  
**HARVIE SENSATION 26S**  
**HARVIE JACCI 82J**

**LEVELDALE KODIAK 23C ET 19K**  
**HARVIE MS FIREBIRD 135P**  
**HARVIE MISS FIREBIRD 41F**

**LEELANDS TRANSITION T7**  
**KAIRURU PLUM T44**  
**HARVIE GOVERNOR 40G**  
**HARVIE MISS FIREFLY 51F**  
**JSF 37 271 DEVO 23C**  
**LEVELDALE MISS VARSITY VIC 26D**  
**HARVIE DEYNOTE 61D**  
**WTK 21N GWEN 18S**

Soggy made calf with piles of hair. His dam has produced a top calf every year. His maternal brother is a herd sire for EJM Farms, ON, and his maternal sister was one of our high selling females to Bill Lyons, ON. He would work on heifers.



Maternal sister to Lot 12

	CE	BW	WW	YW	MILK	TM	MCE	SC	CowWt	Stay	MPI	FMI	REA	Fat	Marb
EPD	+0.9	+2.3	+37.4	+70.2	+16.9	+35.6	+2.5	+0.4	-3.6	+1.2	+144.6	+107.9	+0.17	+0.020	-0.01
ACC	.03	.35	.25	.23	.08	-	.03	.04	.58	.32	.28	.12	.09	.07	.06



## 13 HARVIE TOMMY BOY 76U

CVIH 76U March 04, 2008 BW: 86

HARVIE LADIES MAN 4L  
HARVIE RAFTSMAN 16R  
HARVIE MISS FIREFLY 51F

REMITALL HIGHWAY ET 157H  
BARD 157H SUPER LADY ET 24S  
KMD LADY DEV 1L

HARVIE HILLS 68H  
HARVIE MISS JULIE 9J  
HARVIE DEYNOTE 61D  
HARVIE MISS NYLON 1Y  
REMITALL KEYNOTE 20X  
TOWER-CREEK AMBER 6B  
JSF 37 271 DEVO 23C  
KMD JETSTREAM LADY 4J

Very complete made Raftsmen son that would work great on heifers. His dam is a daughter from the late Tom Charlton's top cow family. He will add length and performance to his progeny.

	CE	BW	WW	YW	MILK	TM	MCE	SC	CowWt	Stay	MPI	FMI	REA	Fat	Marb
EPD	-1.6	+3.8	+43.3	+76.4	+20.8	+42.5	-0.1	+0.5	+33.0	-0.5	+146.5	+149.1	+0.29	-0.024	-0.06
ACC	.11	.36	.29	.30	.11	-	.08	.11	.59	.33	.31	.22	.19	.20	.17



## 14 HARVIE REAL DEAL 110U

CVIH 110U March 17, 2008 BW: 89

HARVIE LADIES MAN 4L  
HARVIE RAFTSMAN 16R  
HARVIE MISS FIREFLY 51F

WTK 75A CONTINENTAL 66F  
GHC MISS CARLA 46N  
WALPOLE CAROLINE 72F

HARVIE HILLS 68H  
HARVIE MISS JULIE 9J  
HARVIE DEYNOTE 61D  
HARVIE MISS NYLON 1Y  
WTK 55Y BOND 75A  
WTK 119A CARLOTTA 66C  
KLONDIKE 500Z FEDERATION 7C  
WALPOLE LADY LUCK 22Z

Well balanced bull that is very easy doing. His 3/4 sister sold for \$7000 for a 1/2 interest to Turkey Feather Ranch, OK. He would work on heifers or cows, whatever you need, he'll do it.

	CE	BW	WW	YW	MILK	TM	MCE	SC	CowWt	Stay	MPI	FMI	REA	Fat	Marb
EPD	+0.5	+3.3	+40.6	+74.7	+18.2	+38.5	+1.2	+0.6	+39.9	+0.8	+142.6	+121.7	+0.23	+0.008	-0.03
ACC	.11	.38	.31	.32	.14	-	.08	.10	.59	.33	.32	.22	.20	.20	.17



## 15 HARVIE VOYAGER 80U

CVIH 80U March 07, 2008 BW: 102

REMITALL ONLINE 122L  
HARVIE RINGLEADER ET 27R  
HARVIE MISS NYLON 1Y

HARVIE MODIFIER 14M  
HARVIE SALLY 49R  
GLFL NEILA 8N

REMITALL EMBRACER 8E  
REMITALL CATALINA 24H  
DURALTA 359S NYLON 16W  
CHSF 4R MISS CHOICE 11U  
REMITALL GOVERNOR 236G  
HARVIE MISS KAMAL 48K  
HARVIE KICKSTART 79K  
MFR LASS 36F

Long bodied, with lot of muscle, a bull that will add performance to his progeny. His dam goes back to our top cow family Harvie Firefly 51F.

	CE	BW	WW	YW	MILK	TM	MCE	SC	CowWt	Stay	MPI	FMI	REA	Fat	Marb
EPD	-0.6	+6.0	+38.7	+82.2	+17.7	+37.0	+1.1	+0.8	+23.3	-0.3	+139.0	+165.1	+0.15	-0.030	-0.08
ACC	.06	.37	.28	.30	.11	-	.05	.07	.58	.32	.30	.20	.18	.19	.16



Howard Hawkwood (Cochrane, AB) Says:

*The Harvie Hereford bull I bought at Calgary Bull Sale has produced outstanding calves, and has increased my herd weaning weights by 45 lbs.*



# CHAROLAIS REFERENCE SIRES



**HARVIE CRYSTAL D TRIGGER 35T**

**ELH 35T February 05, 2007**

	CE	BW	WW	YW	MWWT	MILK
EPD	55.7	0.9	39.1	69.6	42.4	22.8
ACC	.47	.65	.50	.34	.35	.28



**HARVIE REDEMPTION 36P**

**ELH 36P February 26, 2004 BW: 90**

	CE	BW	WW	YW	MWWT	MILK
EPD	29.5	3.8	52.8	95.7	43.5	17.1
ACC	.73	.83	.75	.70	.70	.67



**HARVIE HIGH TIMES 2T**

**ELH 2T January 12, 2007 BW: 80**

	CE	BW	WW	YW	MWWT	MILK
EPD	94.5	1.6	51.3	92.6	46.9	21.2
ACC	.46	.64	.44	.27	.31	.24



**HARVIE JAGER 65J**

**ELH 65J March 23, 1999 BW: 90**

	CE	BW	WW	YW	MWWT	MILK
EPD	13.5	4.8	40.5	70.1	36.6	16.3
ACC	.82	.85	.80	.78	.77	.76



**SILVERSTREAM PERFORMER P38**

**083990038F August 31, 1999**

	CE	BW	WW	YW	MWWT	MILK
EPD	15.6	4.6	47.1	78.0	34.8	11.2
ACC	.32	.46	.29	.19	.20	.15



**SVY AD INVINCIBLE P 748T**

**SVY 748T January 22, 2007 BW: 104**

	CE	BW	WW	YW	MWWT	MILK
EPD	76.6	-0.6	47.3	79.5	41.6	17.9
ACC	.50	.68	.49	.32	.36	.30

## 16 HARVIE PERFORMER ET 9W

**ELH 9W January 29, 2009 BW: 110 Adj. Sale Wt: 1433**  
Scurred

**TILL  
REINETTE  
COAT LEZARD  
BROOKFIELD OCELOT 017  
RAINBOW MR CYRANO 32D  
MVX EDITH 806X  
DCR MR TOM TERRIFIC J996  
HOLMSYDE HOT VISION 17K**

**EXCLUSIF  
SILVERSTREAM PERFORMER P38  
SILVERSTREAM HOUGHTY H83E  
  
MVX COUGARHILL HANK 720G  
HIGHBLUFF SCHATZI 8S  
HOLMSYDE HOT-ON-TOP 212M**

Big, stout, soggy, and lots of hair, just the way we like them. Sired by our new herd sire from New Zealand, Silverstream Performer and out of the World Congress Champion Heifer Calf. This bull has a lot of future ahead of him.

	CE	BW	WW	YW	MWWT	MILK
EPD	34.1	4.0	50.0	90.0	39.9	14.9
ACC	.07	.19	.14	.12	.11	.10





## 17 HARVIE WING MAN 63W

ELH 63W February 17, 2009 BW: 122 Adj. Sale Wt: 1490  
Polled

EXCLUSIF  
SILVERSTREAM PERFORMERP38  
SILVERSTREAM HOUGHTY H83E

LKPR CHALLENGER 208M  
HARVIE MS MOONLIGHT 12R  
HARVIE MS MOONLIGHT 38M

TILL  
REINETTE  
COAT LEZARD  
BROOKFIELD OCELOT 017  
LT WYOMING WIND 4020 PLD  
GPA LUSTY LADY 69H  
HARVIE JAGER 65J  
PAR MISS 20B

Wow what a bull!!! He has eye appeal, lots of hair and piles of red meat. This is our highest performing bull we have on offer. His maternal sister was Sr Heifer Champion at CCYA 2008. Selling  $\frac{3}{4}$  interest and full possession.

	CE	BW	WW	YW	MWWT	MILK
EPD	2.4	6.2	53.0	94.5	41.9	15.4
ACC	.17	.33	.19	.12	.14	.12



## 18 HARVIE WHISKEY MAC 75W

ELH 75W February 20, 2009 BW: 114 Adj. Sale Wt: 1469  
Polled

EXCLUSIF  
SILVERSTREAM PERFORMERP38  
SILVERSTREAM HOUGHTY H83E

HTA WHITEHOT 105A  
MXS MAID 252M  
MXS MIKADO'S MAID 32K

TILL  
REINETTE  
COAT LEZARD  
BROOKFIELD OCELOT 017  
KJP SKY FIRE 51T  
SPARROWS PRISCILLA 8735W  
RPJ MIKADO 707G  
MXS SARAH'S MAID 122E

Here is one of Dad's picks of the pen. He is a fancy fronted bull with lots of volume and a huge quarter to top it off. His dam is a Whitehot daughter with a perfect udder.

	CE	BW	WW	YW	MWWT	MILK
EPD	3.2	5.8	53.3	91.1	42.0	15.3
ACC	.18	.34	.20	.13	.16	.14



## 19 HARVIE WILDCARD 109W

ELH 109W February 28, 2009 BW: 120 Adj. Sale Wt: 1395  
Polled

EXCLUSIF  
SILVERSTREAM PERFORMERP38  
SILVERSTREAM HOUGHTY H83E

LKPR CHALLENGER 208M  
HARVIE HOLLY 35R  
HARVIE HOLLY 53H

TILL  
REINETTE  
COAT LEZARD  
BROOKFIELD OCELOT 017  
LT WYOMING WIND 4020 PLD  
GPA LUSTY LADY 69H  
LANG'S ERIC THE RED 3E  
ARL MISS ACADIA 204B

Very long bodied bull with lots of growth. His dam is a moderate framed female with a beautiful udder that raises a top calf every year.

	CE	BW	WW	YW	MWWT	MILK
EPD	1.6	6.2	54.8	93.2	41.4	14.0
ACC	.17	.33	.18	.12	.14	.12





## 20 HARVIE PERFORMER ET 3W

ELH 3W January 07, 2009 BW: 94 Adj. Sale Wt: 1473  
Polled

EXCLUSIF  
SILVERSTREAM PERFORMERP38  
SILVERSTREAM HOUGHTY H83E

MNE EXCLUSIVE 17E  
SPARROWS BLANCHE 585G  
SPARROW'S BLANCHE 85E

TILL  
REINETTE  
COAT LEZARD  
BROOKFIELD OCELOT 017  
CARLSON'S "ICE" 301C  
MNE WILD ROSE 7W  
HTA NORTHERN LIGHT 357C  
SPARROWS BLANCHE 85C

Here is an opportunity to get a bull sired by an outcross herdsire out of Sparrow's top donor cow. He is super long bodied, with lots of muscle and a huge set of testicles.

	CE	BW	WW	YW	MWWT	MILK
EPD	80.3	2.2	36.6	68.7	38.3	20.0
ACC	.18	.21	.17	.15	.15	.14



## 21 HARVIE PERFORMER ET 82W

ELH 82W February 22, 2009 BW: 86 Adj. Sale Wt: 1352  
Horned

EXCLUSIF  
SILVERSTREAM PERFORMERP38  
SILVERSTREAM HOUGHTY H83E

MNE EXCLUSIVE 17E  
SPARROWS BLANCHE 585G  
SPARROW'S BLANCHE 85E

TILL  
REINETTE  
COAT LEZARD  
BROOKFIELD OCELOT 017  
CARLSON'S "ICE" 301C  
MNE WILD ROSE 7W  
HTA NORTHERN LIGHT 357C  
SPARROWS BLANCHE 85C

Full brother to Lot 20. Very nice profiling bull with lots of hair. With this bull's outcross pedigree and light birth weight, we expect great results.

	CE	BW	WW	YW	MWWT	MILK
EPD	80.3	2.2	36.6	68.7	38.3	20.0
ACC	.18	.21	.17	.15	.15	.14



## 22 HARVIE PERFORMER 23W

ELH 23W February 05, 2009 BW: 88 Adj. Sale Wt: 1261  
Scurred

EXCLUSIF  
SILVERSTREAM PERFORMERP38  
SILVERSTREAM HOUGHTY H83E

SVY DELIVERANCE PLD 401P  
WESTDALE STARLET 3S  
WESTDALE PEPPERMINT 14P

TILL  
REINETTE  
COAT LEZARD  
BROOKFIELD OCELOT 017  
LT RIO BLANCO 1234 P  
SVY CERTINSHESFLIRTIN271M  
LHD CIGAR E46  
WJC SULTRA 9D

Soggy made bull that is super easy doing. He would work on heifers.

	CE	BW	WW	YW	MWWT	MILK
EPD	85.7	1.1	36.6	66.6	35.7	17.4
ACC	.17	.33	.18	.11	.13	.11





## 23 HARVIE WINCHESTER 28W

ELH 28W February 08, 2009 BW: 92 Adj. Sale Wt: 1496  
Polled

DBAR SURVIVOR 220M  
SVY AD INVINCIBLE P 748T  
PLEASANT DAWN PAM 214J

HARVIE JAGER 65J  
HARVIE MS NADA 80N  
HARVIE MISS GENEVA 21G

DBAR BAXTER 4K  
KALA'S FROSTY 121H  
BAR J HOT POINT 63F  
MS JBK ARROW 16T  
LANG'S ERIC THE RED 3E  
HARVIE MISS FRANCIS 47F  
HARVIE DOMINATION 83D  
JSC LADY COCO 117W

Could be the best bull that we have on offer. He is a sound, high performing, easy doing bull that is out of one of our best females we have on the farm. We have used several maternal brothers to him in our herd. Selling  $\frac{3}{4}$  interest and full possession.

	CE	BW	WW	YW	MWWT	MILK
EPD	93.0	-2.1	45.6	76.6	41.9	19.1
ACC	.21	.37	.24	.17	.20	.18



## 24 HARVIE INVINCIBLE ET 52W

ELH 52W February 16, 2009 BW: 102 Adj. Sale Wt: 1407  
Horned

DBAR SURVIVOR 220M  
SVY AD INVINCIBLE P 748T  
PLEASANT DAWN PAM 214J

VMX COUGARHILL HANK 720G  
HARVIE MS NETTIE 3N  
PRAIRIE COVE MISS 12G

DBAR BAXTER 4K  
KALA'S FROSTY 121H  
BAR J HOT POINT 63F  
MS JBK ARROW 16T  
RAINBOW MR CYRANO 32D  
VMX EDITH 806X  
MNE EXCLUSIVE 17E  
JDS NETTIE 314C

Big topped, heavy muscled bull with piles of hair. His dam was World Champion Female and Show Female of the year in 2005 and 2006 - a feat that has never been done before!



World Champion Female - Dam of Lots 24 & 25

	CE	BW	WW	YW	MWWT	MILK
EPD	74.8	0.7	44.8	82.3	48.8	26.4
ACC	.21	.23	.19	.16	.16	.15



## 25 HARVIE INVINCIBLE ET 54W

ELH 54W February 16, 2009 BW: 96 Adj. Sale Wt: 1454  
Horned

DBAR SURVIVOR 220M  
SVY AD INVINCIBLE P 748T  
PLEASANT DAWN PAM 214J

VMX COUGARHILL HANK 720G  
HARVIE MS NETTIE 3N  
PRAIRIE COVE MISS 12G

DBAR BAXTER 4K  
KALA'S FROSTY 121H  
BAR J HOT POINT 63F  
MS JBK ARROW 16T  
RAINBOW MR CYRANO 32D  
VMX EDITH 806X  
MNE EXCLUSIVE 17E  
JDS NETTIE 314C

High performing bull with lots of hair and length. He is a full brother to Lot 24.



World Champion Female - Dam of Lots 24 & 25

	CE	BW	WW	YW	MWWT	MILK
EPD	74.8	0.7	44.8	82.3	48.8	26.4
ACC	.21	.23	.19	.16	.16	.15





## 26 HARVIE WHITE BULL 35W

**ELH 35W** February 10, 2009 **BW: 114 Adj. Sale Wt: 1502**  
Scurred

**HARVIE CRAVEN-A-JAY 9R**  
**HARVIE HIGH TIMES 2T**  
**SDC HOPE 79R**

**HARVIE REDEMPTION 36P**  
**HARVIE MARY LOU 76T**  
**HFCC MARI LOU 719G**

**MSW CRAVEN RED 29M**  
**HARVIE MS NADA 80N**  
**SVY FREEDOM PLD 307N**  
**RKG BARBIE DOLL 125K**  
**LT WYOMING WIND 4020 PLD**  
**HARVIE MS MOLSON 53M**  
**HFCC HIGHLITER 6D**  
**HFCC MARI LOU 544E**

One of the heaviest bulls on offer and off a first calf heifer. Here is a bull that is going to add lots of growth to his calves by fall.

	CE	BW	WW	YW	MWWT	MILK
EPD	23.9	5.7	57.9	103.1	46.8	17.8
ACC	.31	.36	.21	.14	.16	.14



## 27 HARVIE WHITE BULL 37W

**ELH 37W** February 11, 2009 **BW: 83 Adj. Sale Wt: 1413**  
Scurred

**HARVIE CRAVEN-A-JAY 9R**  
**HARVIE HIGH TIMES 2T**  
**SDC HOPE 79R**

**CHARDEL HARVEST 438D**  
**HARVIE ANASTASIA 15T**  
**HFCC ANASTASIA 7L**

**MSW CRAVEN RED 29M**  
**HARVIE MS NADA 80N**  
**SVY FREEDOM PLD 307N**  
**RKG BARBIE DOLL 125K**  
**FVC TANGO 907Y**  
**CHARDEL EVANGELINE 822X**  
**SPARROWS ALLIANCE 513G**  
**HFCC ANASTASIA 519E**

Light birth weight bull with loads of growth and potential. He is off a first calf heifer and is one of the highest performing bulls on offer.

	CE	BW	WW	YW	MWWT	MILK
EPD	99.0	-0.5	43.1	78.3	44.6	23.0
ACC	.31	.36	.21	.14	.16	.14



## 28 HARVIE WHITE BULL 67W

**ELH 67W** February 19, 2009 **BW: 108 Adj. Sale Wt: 1243**  
Polled

**HARVIE CRAVEN-A-JAY 9R**  
**HARVIE HIGH TIMES 2T**  
**SDC HOPE 79R**

**HARVIE DIRTY DEEDS 56R**  
**HARVIE MS FUN 127T**  
**HARVIE FUN RED 155R**

**MSW CRAVEN RED 29M**  
**HARVIE MS NADA 80N**  
**SVY FREEDOM PLD 307N**  
**RKG BARBIE DOLL 125K**  
**HARVIE NELSON 98N**  
**HARVIE MS NETTIE 3N**  
**HARVIE NOBLE 53N**  
**HARVIE MS NAD 43N**

Stout made bull with lots of body and muscle. He is off a moderate framed cow that is very easy doing.

	CE	BW	WW	YW	MWWT	MILK
EPD	37.2	4.5	48.3	87.1	46.0	21.8
ACC	.30	.36	.21	.14	.16	.13





## 29 HARVIE RED BULL 29W

ELH 29W February 08, 2009 BW: 93 Adj. Sale Wt: 1368  
Polled

HARVIE CRAVEN-A-JAY 9R  
HARVIE HIGH TIMES 2T  
SDC HOPE 79R

HARVIE JAGER 65J  
HARVIE MS KITTY 107T  
HARVIE MISS KITTY 72K

MSW CRAVEN RED 29M  
HARVIE MS NADA 80N  
SVY FREEDOM PLD 307N  
RKG BARBIE DOLL 125K  
LANG'S ERIC THE RED 3E  
HARVIE MISS FRANCIS 47F  
HARVIE DOMINATION 83D  
PAR MISS 35B

Dark red bull, with lots of performance and growth. He is off a first calf heifer that has lots of milk. 29W has been a stand out since day one.

	CE	BW	WW	YW	MWWT	MILK
EPD	79.9	1.1	44.4	78.7	41.3	19.1
ACC	.31	.36	.21	.14	.16	.14



## 30 HARVIE RED BULL 45W

ELH 45W February 13, 2009 BW: 90 Adj. Sale Wt: 1230  
Polled

HARVIE CRAVEN-A-JAY 9R  
HARVIE HIGH TIMES 2T  
SDC HOPE 79R

HARVIE JAGER 65J  
HARVIE MONTE 130T  
SFL 105 MISS MONTE 20L

MSW CRAVEN RED 29M  
HARVIE MS NADA 80N  
SVY FREEDOM PLD 307N  
RKG BARBIE DOLL 125K  
LANG'S ERIC THE RED 3E  
HARVIE MISS FRANCIS 47F  
HTA WHITEHOT 105A  
LOEWEN MS MONTECARLO321C

Moderate framed bull that is packed full of muscle. His dam is a maternal sister to the World Congress Reserve Champion Female.

	CE	BW	WW	YW	MWWT	MILK
EPD	83.8	1.5	38.7	76.1	42.0	22.6
ACC	.31	.36	.21	.14	.16	.14



## 31 HARVIE RED BULL 445W

ELH 445W February 13, 2009 BW: 90 Adj. Sale Wt: 1306  
Polled

HARVIE CRAVEN-A-JAY 9R  
HARVIE HIGH TIMES 2T  
SDC HOPE 79R

HARVIE REDEMPTION 36P  
HARVIE MS NADEGE 106T  
HARVIE MS NADEGE 67N

MSW CRAVEN RED 29M  
HARVIE MS NADA 80N  
SVY FREEDOM PLD 307N  
RKG BARBIE DOLL 125K  
LT WYOMING WIND 4020 PLD  
HARVIE MS MOLSON 53M  
HARVIE JAGER 65J  
HARVIE JEANNIE 72J

Dark red meat machine, off a first calf heifer who's going to make a great brood cow. This one of my favourite red bulls in the sale. He would work on heifers or cows.

	CE	BW	WW	YW	MWWT	MILK
EPD	75.0	0.7	44.2	78.8	41.6	19.5
ACC	PE	0.36	.21	.14	.16	.14



## 32 HARVIE RED BULL 57W

ELH 57W February 16, 2009 BW: 108 Adj. Sale Wt: 1173  
Polled

HARVIE CRAVEN-A-JAY 9R  
HARVIE HIGH TIMES 2T  
SDC HOPE 79R

HARVIE REDEMPTION 36P  
HARVIE PHOEBE 164T  
HARVIE PHOEBE 64P

MSW CRAVEN RED 29M  
HARVIE MS NADA 80N  
SVY FREEDOM PLD 307N  
RKG BARBIE DOLL 125K  
LT WYOMING WIND 4020 PLD  
HARVIE MS MOLSON 53M  
HARVIE JAGER 65J  
HARVIE HENRIETTA 52H

Dark red, easy doing bull, off a first calf heifer. 57W is four generations red.

	CE	BW	WW	YW	MWWT	MILK
EPD	45.8	4.2	45.4	86.8	42.5	19.8
ACC	.31	.36	.21	.14	.16	.14



## 33 HARVIE RED BULL 69W

ELH 69W February 19, 2009 BW: 97 Adj. Sale Wt: 1198  
Scurred

MAUNGAHINA TOWKAY T13  
HARVIE CRYSTAL D TRIGGER 35T  
HARVIE MS MOLSON 53M

HARVIE JAGUAR 934J  
HARVIE MS MARY ANN 64M  
PAR MISS 34A

BULLS M07  
MAUNGAHINA PRINCESS 2 L23  
HARVIE JAGER 65J  
HARVIE MISS FIREFLY 31F  
HILLVIEW BONANZA 464D  
HILLVIEW MS ACE 520E  
P-3 MONTE LAD 8-73X  
PAR MISS 23X

High volume bull with loads of hair. His dam has perfect udder. His sire is one of the soundest structured bulls that you will find out there.

	CE	BW	WW	YW	MWWT	MILK
EPD	71.0	0.3	34.7	61.6	37.9	20.5
ACC	.20	.37	.23	.16	.18	.16



## 34 HARVIE RED BULL 94W

ELH 94W February 24, 2009 BW: 103 Adj. Sale Wt: 1177  
Scurred

MAUNGAHINA TOWKAY T13  
HARVIE CRYSTAL D TRIGGER 35T  
HARVIE MS MOLSON 53M

HARVIE JAGER 65J  
HARVIE RED GELLA 139R  
HARVIE MS GELLA 35G 73L

BULLS M07  
MAUNGAHINA PRINCESS 2 L23  
HARVIE JAGER 65J  
HARVIE MISS FIREFLY 31F  
LANG'S ERIC THE RED 3E  
HARVIE MISS FRANCIS 47F  
HARVIE JAGUAR 934J  
HARVIE MISS GELLIA 35G

Cherry bull that has lots of volume and a ton of muscle. His dam comes from our Gella cow family, who has raised us numerous herdsires like Nelson and Mojo.

	CE	BW	WW	YW	MWWT	MILK
EPD	28.0	2.5	40.7	74.1	42.2	21.8
ACC	.20	.36	.23	.16	.18	.15





## 35 HARVIE RED BULL 141W

ELH 141W March 11, 2009  
Polled

BW: 106 Adj. Sale Wt: 1230

BULLS M07  
MAUNGAHINA PRINCESS 2 L23  
HARVIE JAGER 65J  
HARVIE MISS FIREFLY 31F  
DEER CREEKS ROMEO 5C  
CHARLANG DUCHESS 27Z  
GRANADAS RED ACE 17B  
HILLVIEW MISS POLL 5A

MAUNGAHINA TOWKAY T13  
HARVIE CRYSTAL D TRIGGER 35T  
HARVIE MS MOLSON 53M

LANG'S ERIC THE RED 3E  
HARVIE MS ACE 1L  
HILLVIEW MS ACE 520E

Cherry red bull that comes from our Ace cow family. His dam has always raised one of our top calves each year. 141W is a maternal brother to Harvie Right Now, one of our herdsires.



Dam of Lot 35



	CE	BW	WW	YW	MWWT	MILK
EPD	38.9	2.0	34.3	64.0	42.1	24.9
ACC	.21	.37	.24	.17	.19	.17

## 36 HARVIE RED SHOT 145W

ELH 145W March 11, 2009  
Polled

BW: 96 Adj. Sale Wt: 1304

BULLS M07  
MAUNGAHINA PRINCESS 2 L23  
HARVIE JAGER 65J  
HARVIE MISS FIREFLY 31F  
LANG'S ERIC THE RED 3E  
HARVIE MISS FRANCIS 47F  
KJP SKY FIRE 51T  
JSC LADY LAREDO 120W

MAUNGAHINA TOWKAY T13  
HARVIE CRYSTAL D TRIGGER 35T  
HARVIE MS MOLSON 53M

HARVIE JAGER 65J  
HARVIE MS NAD 43N  
HARVIE MISS FUN 37F

Cole's pick of the red bulls. 145W is a super complete made bull that is flawless in his structure. His maternal brother was our top bull calf last and is now working for Kevin Reese at Milk River.



	CE	BW	WW	YW	MWWT	MILK
EPD	72.7	0.3	38.2	62.8	40.3	21.2
ACC	.21	.37	.23	.16	.19	.17

## 37 HARVIE RED BULL 120W

ELH 120W March 02, 2009  
Polled

BW: 100 Adj. Sale Wt: 1331

BULLS M07  
MAUNGAHINA PRINCESS 2 L23  
HARVIE JAGER 65J  
HARVIE MISS FIREFLY 31F  
KEYS HANDYMAN PLD 255H  
SVS FIREBALL 19F  
HARVIE JAGER 65J  
HARVIE HENRIETTA 52H

MAUNGAHINA TOWKAY T13  
HARVIE CRYSTAL D TRIGGER 35T  
HARVIE MS MOLSON 53M

MSW CRAVEN RED 29M  
HARVIE HENRIETTA 58S  
HARVIE PHOEBE 64P

Tan bull that is very deep sided, with lots of muscle. His dam is an easy fleshing cow with a great udder.



	CE	BW	WW	YW	MWWT	MILK
EPD	50.5	2.2	45.1	86.1	43.1	20.5
ACC	.20	.36	.22	.15	.17	.14



## 38 HARVIE WHITE BULL 168W

**ELH 168W** March 22, 2009  
Polled

**BW: 114 Adj. Sale Wt: 1388**

SCHURRTOP 5627  
LT CHAP'S LADY 2170P  
HARVIE JAGER 65J  
HARVIE MISS FIREFLY 31F  
ARL MR ACADIA 16A  
PAR MISS 45A  
THE HHP MONTE CARLO 1ST  
JSC LADY FASHION 102W

LT WYOMING WIND 4020 PLD  
HARVIE REDEMPTION 36P  
HARVIE MS MOLSON 53M  
  
HARVIE DOMINATION 83D  
HARVIE MISS HILDA 9H  
HARVIE MS DIVERSION 32D

Super high performing calf, with herd bull written all over him. His full brother was World Congress Jr. Bull Calf Champion and his sire was World Congress Champion Bull.

	CE	BW	WW	YW	MWWT	MILK
EPD	49.3	2.5	40.1	79.4	43.2	23.1
ACC	.25	.39	.27	.23	.25	.24



High selling bull at Calgary Bull Sale - Full brother to Lot 38

## 39 HARVIE WHITE BULL 125W

**ELH 125W** March 04, 2009  
Horned

**BW: 102 Adj. Sale Wt: 1447**

ABC LATORO 263G  
SPARROWS BLANCHE 585G  
HTA WHITEHOT 105A  
HTA BOBBY JO 97K  
BULLS M07  
MAUNGAHINA PRINCESS 2 L23  
HARVIE JAGER 65J  
PAR MISS 20B

SPARROWS DURANGO 585P  
HTA DURMAX 642S  
HTA BOBBI JO PLD 207M  
  
MAUNGAHINA TOWKAY T13  
HARVIE MS SUNLIGHT 11S  
HARVIE MS MOONLIGHT 38M

Lots of hair, muscle and performance to burn. His dam is a big bodied female with lots of milk. His sire has added lots of muscle shape and hair to our herd.

	CE	BW	WW	YW	MWWT	MILK
EPD	54.5	2.4	46.9	99.3	47.6	24.1
ACC	.20	.37	.24	.18	.18	.15



## 40 HARVIE WHITE BULL 156W

**ELH 156W** March 15, 2009  
Horned

**BW: 110 Adj. Sale Wt: 1366**

ABC LATORO 263G  
SPARROWS BLANCHE 585G  
HTA WHITEHOT 105A  
HTA BOBBY JO 97K  
LT WYOMING WIND 4020 PLD  
GPA LUSTY LADY 69H  
HARVIE DOMINATION 83D  
HARVIE MISS 76F

SPARROWS DURANGO 585P  
HTA DURMAX 642S  
HTA BOBBI JO PLD 207M  
  
LKPR CHALLENGER 208M  
HARVIE ACADIA 93R  
HARVIE MISS HEIDY 15H

Stout made, moderate framed and lots of hair. His full brother was sold to Buck Mountain Grazing Lease last year. His dam is one of my favourite cows on the farm.

	CE	BW	WW	YW	MWWT	MILK
EPD	36.8	2.5	45.4	100.6	48.4	25.7
ACC	.20	.37	.25	.19	.19	.16





## 41 HARVIE RED BULL 135W

ELH 135W March 08, 2009 BW: 108 Adj. Sale Wt: 1219  
Polled

LT WYOMING WIND 4020 PLD  
HARVIE REDEMPTION 36P  
HARVIE MS MOLSON 53M

HARVIE JAGER 65J  
HARVIE NAUGHTY 56S  
BKJ NAUGHTY PLD 932J

Tan bull that is long sided with lots of hair. His dam is a daughter off of the pick of Winn Man Charolais herd.

	CE	BW	WW	YW	MWWT	MILK
EPD	30.2	3.8	44.7	80.3	38.8	16.4
ACC	.23	.38	.25	.21	.22	.21

SCHURRTOP 5627  
LT CHAP'S LADY 2170P  
HARVIE JAGER 65J  
HARVIE MISS FIREFLY 31F  
LANG'S ERIC THE RED 3E  
HARVIE MISS FRANCIS 47F  
SLY EASTWOOD PLD 32F  
BKJ JENNY PLD 609F



## 42 HARVIE WHITE BULL 151W

ELH 151W March 13, 2009 BW: 96 Adj. Sale Wt: 1311  
Polled

SPARROWS DURANGO 585P  
HTA DURMAX 642S  
HTA BOBBI JO PLD 207M

LKPR CHALLENGER 208M  
HARVIE PHEBE 93P  
PAR MISS 20B

Long patterned bull with lots of muscle shape. His dam is an easy doing female that has raised a sale bull or replacement heifer each year.

	CE	BW	WW	YW	MWWT	MILK
EPD	78.6	-0.1	41.3	92.3	48.5	27.8
ACC	.21	.38	.25	.19	.19	.16

ABC LATORO 263G  
SPARROWS BLANCHE 585G  
HTA WHITEHOT 105A  
HTA BOBBY JO 97K  
LT WYOMING WIND 4020 PLD  
GPA LUSTY LADY 69H  
5R ANTONIOS PRIDE 1451FB  
PAR MISS 17Z



## 43 HARVIE WHITE BULL 43W

ELH 43W February 12, 2009 BW: 90 Adj. Sale Wt: 1386

MVX COUGARHILL HANK 720G  
HARVIE STINGER 2R  
HFCC ANASTASIA 7L

CHARCO MONTE 41H  
CRG TILT A WHIRL 23T  
CHARCO EVEREADY 11H

Growthy bull that is really clean fronted. He is off a first calf heifer and sired by the high selling yearling bull at Calgary Bull Sale.

	CE	BW	WW	YW	MWWT	MILK
EPD	85.7	2.1	39.4	80.6	40.3	20.6
ACC	.31	.37	.22	.17	.18	.16

RAINBOW MR CYRANO 32D  
MVX EDITH 806X  
SPARROWS ALLIANCE 513G  
HFCC ANASTASIA 519E  
LOYDELA MONTE 8B  
CRG MISS TUNDRA 7E  
RPJ EVEREADY 403D  
E-CEE SHE'S HOT 377C



## 44 CHARHAVEN WAYLON 91W

WGBR 91W January 02, 2009 BW: 90 Adj. Sale Wt: 1702  
Polled

SVY FREEDOM PLD 307N  
SPARROWS VINTAGE 75R  
SPARROWS SONORA 75L

CROSBY'S ALLIANCE 99M  
CHARHAVEN LADY PRIMROSE  
CHARHAVEN LADY MAC 224M

A high performing bull that also has lots of volume and muscle. He is sired by the Sirvor Champion Bull. He will work great on cows to add performance.

	CE	BW	WW	YW	MWWT	MILK
EPD	82.0	1.8	37.6	69.9	38.2	19.4
ACC	.20	.37	.18	.15	.14	.12

HFCC PLD EVOLUTION 5L  
SVY PURRFECT 184L  
ABC LATORO 263G  
SPARROWS SHOWGIRL 475H  
SPARROWS ALLIANCE 513G  
WESTDALE KATHRIN PLD 1K  
RA BIG CAT 9017 PLD  
FUNDY RED DESTING 432D





## 45 LLW DOUBLE L HARVIE 123U

LLW 123U February 10, 2008 BW: 116

Polled

RAINBOW MR CYRANO 32D  
 MVX EDITH 806X  
 SPARROWS ALLIANCE 513G  
 HFCC ANASTASIA 519E  
 NAV CASPER 19C  
 BAR 7 EASY FRANKIE 30F  
 LWR CHANNING 2C  
 CSF MISS ULNISHGA 991Y

MVX COUGARHILL HANK 720G  
 HARVIE STINGER 2R  
 HFCC ANASTASIA 7L

PCS LEADER 16L  
 BAR 7 EASY RUMOR 55R  
 BAR 7 EASY GEISHAGIRL 8G

A very high capacity bull that has a great big foot under him. We used him last spring and will be having our first calf crop this spring.

	CE	BW	WW	YW	MWWT	MILK
EPD	18.2	6.2	37.8	78.0	38.9	20.0
ACC	.20	.37	.19	.17	.16	.14



## 46 HARVIE UNREAL 39U

ELH 39U February 20, 2008 BW: 94

Polled

RAINBOW MR CYRANO 32D  
 MVX EDITH 806X  
 SPARROWS ALLIANCE 513G  
 HFCC ANASTASIA 519E  
 HFCC PLD EVOLUTION 5L  
 SVY PURRFECT 184L  
 PCC LEXUS 840H  
 KALA'S FROSTY 121H

MVX COUGARHILL HANK 720G  
 HARVIE STINGER 2R  
 HFCC ANASTASIA 7L

SVY FREEDOM PLD 307N  
 HARVIE MS SELINA 17S  
 DBAR MISS KALLIE 17K

We used this long bodied bull on all of our heifers last year. His first calves are just hitting the ground now, they are coming nice and easy, and look great.

	CE	BW	WW	YW	MWWT	MILK
EPD	91.1	2.4	34.4	75.7	40.4	23.2
ACC	.21	.37	.24	.23	.19	.17



## 47 HARVIE BEEF MAKER 108U

ELH 108U March 16, 2008 BW: 114

Scurred

DEER CREEKS ROMEO 5C  
 CHARLANG DUCHESS 27Z  
 HARVIE DOMINATION 83D  
 PAR MISS 13B  
 SPARROWS SHERIFF 315W  
 MISS GBR JAVLIN 1W  
 PCFL MONTE CARLO 19W  
 PAR MISS 13W

LANG'S ERIC THE RED 3E  
 HARVIE JAGER 65J  
 HARVIE MISS FRANCIS 47F

A-JAY'S PLD DIMENSION69E  
 HARVIE MISS GLYNIS 31G  
 PAR MISS 5A

High performing, heavy muscled bull, with lots of length. His full brother was the high selling bull at Calgary Bull Sale to Church's at Balzac. His dam raised one of our highest performing calves each year up to the age of 12.

	CE	BW	WW	YW	MWWT	MILK
EPD	19.1	5.0	37.3	69.2	37.1	18.4
ACC	.25	.39	.27	.26	.26	.25



Brian Jackson (Manager, Rocky Mountain House Provincial Grazing Reserve) Says:

*We have been using Harvie Charolais bulls for several years now, and are very pleased with them. We run 1300 cow calf pairs here with a 30:1 bull ratio, and we are just about exclusively using Harvie bulls. With the rotational grazing that we do, our bulls have to be able to cover ground, and over the years that we have been using these bulls, I have never had to trim a bull's foot or lost a bull with a bad leg, hip, or shoulder. They come off the truck ready to work, they are horse broke, dog broke, and you can handle them on foot. Their disposition is really second to none. The cows calve virtually on their own, and the calves come out active with rapid gain.*