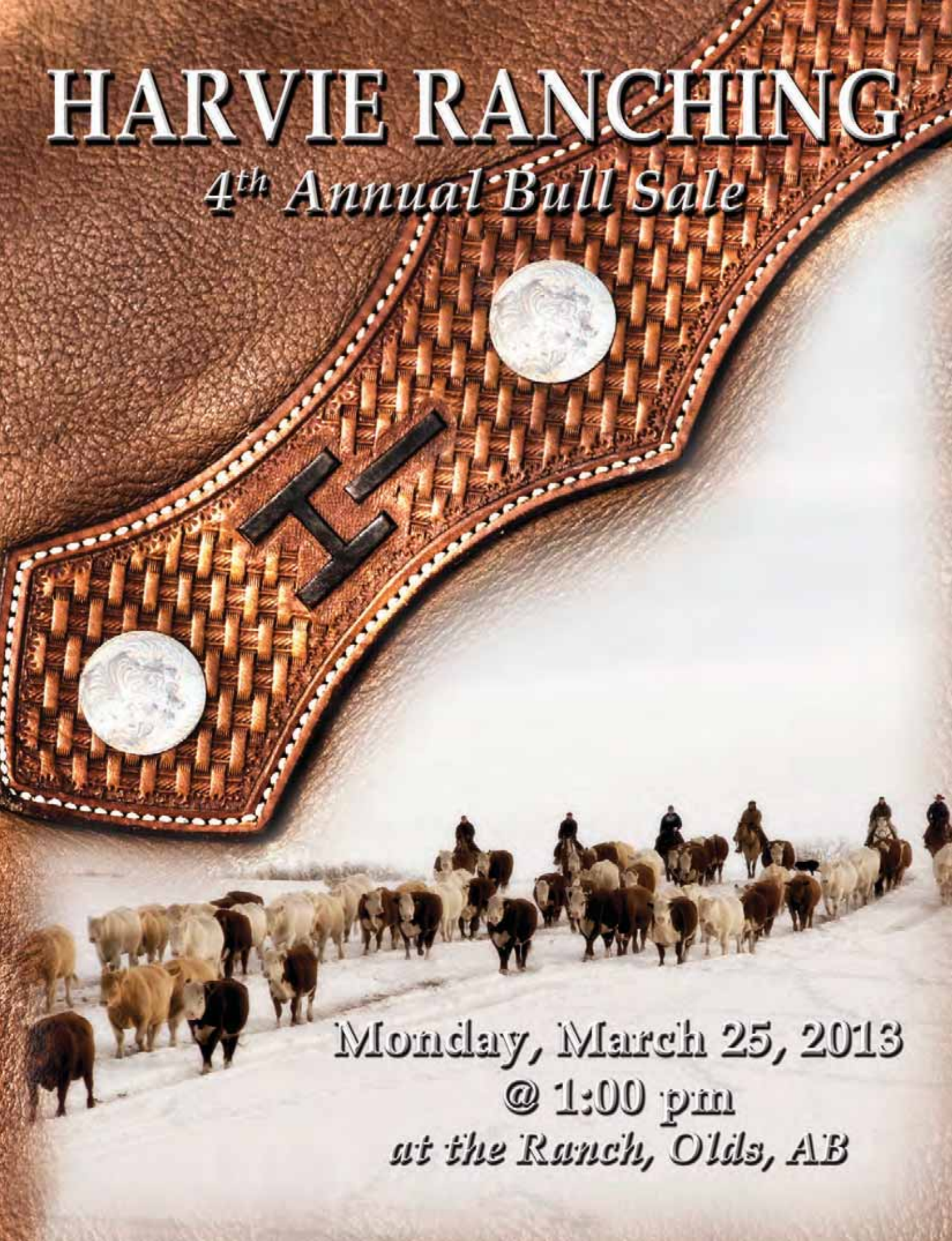


HARVIE RANCHING

4th Annual Bull Sale



Monday, March 25, 2013

@ 1:00 pm

at the Ranch, Olds, AB

HARVIE RANCHING'S 4TH ANNUAL BULL SALE

Hello fellow Cattle Breeders,

It is with great pleasure to welcome you to the 4th Annual Harvie Ranching Bull Sale. We would like to thank all our buyers, bidders and friends whom have supported us through the years. It is your support that drives us to be at the top of our game day in and day out, trying to produce bulls that make YOU more money! This summer, the World Hereford Conference came to Olds, Alberta. Not only did we show 14 Polled Herefords, we also welcomed over 250 international visitors to the ranch. A big thanks to Marlene for the warm hospitality and homemade saskatoon pie! And some exciting news for 2013, we are all looking forward to meeting Scott and Kerrie's new baby whom shall arrive any day.

It is exciting to witness the beef industry excel in terms of innovation, market access and most importantly profitability. It is certainly rewarding to witness an increased value of cattle considering the hard work and dedication it takes to be a successful rancher. In today's beef market, optimism continues to rise at a high pace and as a rancher it is necessary to maximize profit. When the time comes to sell the calf crop, you want to make sure you are adding every pound possible. One of the best ways to guarantee this objective is by using a great bull. Successful bull buying is achieved by selecting strong bulls from reputable breeders. Our bulls are backed by the Harvie Ranching brand that was created by a 36 year breeding plan built around profitable cattle.

This year, the Harvie Ranching bull pen looks solid. We are very proud to stamp the Harvie Ranching name on each of them. Over the past few years, we have added a couple new herd sires to this year's line up and they continue to surpass our expectations of breeding performance! With the bulls on offer, we believe there is a bull to fit everyone's need. Regardless if you're looking for a heifer bull or just adding extra performance, these bulls will sire calves that add more dollars to YOUR pocket!

All of us here at Harvie Ranching are passionate and focused on being in the bull business for the long haul. Rest assure you can buy with confidence at our sale. We do look forward to this day every year as we get to host so many of our customers and friends. We look forward to making your day enjoyable as we are very grateful that you chose to select your bull from us! You are more than welcome to stop by and view the bulls prior to the sale, just give us a phone call to set up a time.

Please join us on March 25, 2013 for Scott's soon to be World Famous Smoked Beef and the warm hospitality from the Harvie Ranching crew.

Sincerely

The Harvie Family



Ian & Marlene

Ian & Marlene Harvie
Home: 403-335-4180
Cell: 403-507-3886



Will

Will Harvie
403-994-3825



Cole, Jill & Tinley

Cole, Jill & Tinley Harvie
Home: 403-335-4206
Cell: 403-994-1314



Scott & Kerrie

Scott & Kerrie Harvie
403-586-4278

WEBSITE: WWW.HARVIERANCHING.COM

EMAIL: HARVIERANCH@XPLORNET.COM

RR#2 OLDS, AB T4H 1P3

Important Sale Information

Time and Place

1 p.m. MST, Monday, March 25, 2013 at Harvie Ranching

Lunch will be provided before the sale, as well as some warm hospitality.

From Olds: 6 miles south on Hwy 2A. Turn west (right) on Bergen Road (Olds-Didsbury Airport) for 9 miles to Range Road 3.1 and turn south (left). Continue for 1/2 mile, sale barn is on the west (right).

Hotel Accommodations: Best Western Motel (Olds) 403-556-5900 • Ramada Hotel (Olds) 403-507-8349
Didsbury Country Inn (Didsbury) 403-335-8088

Airports: Calgary International Airport - Harvie Ranching is located just 45 mins. drive north of Calgary International Airport. Olds also has a small craft municipal airport.

EPDS: Please note that EPDs may change from the time the catalogue is printed and registration papers are transferred. EPDs are not comparable between breeds.

Sale Staff:

Auctioneer: Ryan Dorran 403-507-6483
Ring Service: Rod McLeod 403-540-7986
Sales Consultants: Tim Bullick 403-350-4858
Bohrson Marketing Services - Scott Bohrson - 403-370-3010
American Hereford Association - Joe Rickabaugh 785-633-3188
Steve Wolff - North Dakota 701-710-1574

Sale Day Phones:

Ian Harvie 403-507-3886
Cole Harvie 403-994-1314
Scott Harvie 403-586-4278
Jill Harvie 403-771-3502
Will Harvie 403-994-3825

Sight Unseen Purchases: We hope that you will be able to attend the sale, but we also know that everyone has a busy schedule and that you may not be able to attend on sale day. Of course you will still be able to send your bids with any of our very competent sales staff, with the utmost confidence that your business will be tended to in a most professional manner. We do ask the for absentee bidding program that you give us a call first so that we may suggest bulls that would best suit your needs and your budget, as we have complete knowledge of the offering presented. 100% satisfaction is guaranteed when using this program. If the animal is not as described to you on purchase, you don't own him - no questions asked!

Harvie Ranching Bull Warranty: Harvie Ranching guarantees to sell you a bull that has passed a semen test performed by a licensed veterinarian. Should a Harvie Ranching bull fail to be a satisfactory breeder that is unable to physically breed a cow or heifer, a credit will be given towards the purchase of another bull. Should you have a problem, we have spare bulls available. We guarantee to provide you with a sound breeding bull, but will not provide replacement or credit for physical injury or mismanagement. Bearing this in mind, we strongly advise you to insure your bull. All problems must be reported to Harvie Ranching in writing. The bull must be returned to Harvie Ranching immediately when the problem is detected, at the buyer's expense. Harvie Ranching will have the bull examined by a veterinarian, and will have 60 days to prove the bull a breeder. If the bull does not prove to be a breeder, the buyer will be entitled to a complete refund of the purchase price of the bull in question. Should the bull prove to be a breeder, he will be returned to the buyer at Harvie Ranching's expense, and the matter will be considered closed. In the case of losses, Harvie Ranching will only be responsible for the original purchase price of the animal. We assume no liability, legal or otherwise, to make any compensation to the buyer.

Harvie Ranching reserves the right to in-herd semen use on any bull sold in the sale, with semen drawn at Harvie Ranching's expense, and the buyer's convenience.

Terms and Conditions:

Terms: The terms of the sale are cash or cheque, payable at par at the sales location, unless satisfactory credit or invoicing arrangements have been made prior to the sale. The right of property shall not pass until settlement has been made.

Delivery: Harvie Ranching will deliver up to 150 miles for free, further distances will be charged at cost. Bulls may be kept at Harvie Ranching until April 30, 2013 at no charge, after that time, bulls will be kept for \$3/day. Buyers who pick up their bull within a week of sale day will receive a \$50 discount/bull.

Insurance: Will be available sale day through DJ Henderson & Associates (403-782-3888). We recommend that all bulls left at Harvie Ranching be insured.

Volume Bull Discount: A volume discount will be applied to multiple purchases as follows:
3 bulls - 3%, 4 bulls - 4%, 5 bulls - 5%, 6 bulls - 6%, 7 bulls - 7%, 8 bulls - 8%, 9 bulls - 9%, 10+ bulls - 10%

Announcements: Announcements from the auctioneer will take precedence over any material printed in this catalogue.

Registration & Transfer: A registration certificate of the animal will be duly transferred to the purchaser.

Liability: The owners, their employees, sale staff, and representatives accept no liability for accidents that may occur. Persons who attend do so at their own risk.

Produced by The Canadian Hereford Digest ~ *The Canadian Hereford Association is pleased to present this catalogue on behalf of Harvie Ranching.*

Hereford Herd Sires HARVIE TAILOR MADE ET 7W (DLF IEF HYF)

CVIH 7W

January 28, 2009

BW: 94

Polled



Sold for \$80,500 1/3 interest
\$40.00/dose • \$100.00/certificate
Minimum 5 doses U.S. only

CE	BW	WW	YW	MILK	TM
-4.2	6.1	64.9	106.9	18.2	50.7



SIRE KAIRURU ABERDEEN 03 0047
HARVIE TRAVELER 69T
HARVIE PEARL 129P

LEELANDS TRANSITION T7
KAIRURU PLUM T44
LEVELDALE KODIAK 23C ET 19K
EASTON 26Y IRON LADY 43A

DAM HARVIE DEYNOTE 61D
HARVIE MISS FIREFLY 51F
HARVIE MISS NYLON 1Y

REMITALL KEYNOTE 20X
MISS CRAIGIE TRUSTMARK 10Y
DURALTA 359S NYLON 16W
CHSF 4R MISS CHOICE 11U

HARVIE HIGH ROLLER ET 66X (DLF IEF HYF)

CVIH 66X

February 16, 2010

BW: 101

Polled



2 Time Denver
Division Champion
\$40.00/dose • no certificates required
Minimum 5 doses Canada & U.S.

CE	BW	WW	YW	MILK	TM
-2.1	6.6	86.1	130.6	22.6	65.7



SIRE KAIRURU ABERDEEN 03 0047
HARVIE TRAVELER 69T
HARVIE PEARL 129P

LEELANDS TRANSITION T7
KAIRURU PLUM T44
LEVELDALE KODIAK 23C ET 19K
EASTON 26Y IRON LADY 43A

DAM BR DM CHANNING ET
HARVIE DAN MS FIREFLY 69S
HARVIE MS FIREFLY 65P

REMITALL ONLINE 122L
DM L1 DOMINETTE 820
HARVIE LADIES MAN 4L
HARVIE MISS FIREFLY 51F

Hereford Herd Sires

HARVIE DAN T-BONE 196T {DLF IEF HYF}

CVIH 196T

April 24, 2007

BW: 85

Polled

Sold For \$22,500 for ½ interest
at Mile High Sale

\$40.00/dose • no certificates required
Minimum 5 doses Canada & U.S.

CE	BW	WW	YW	MILK	TM
-0.5	3.9	53.0	88.6	18.9	45.4



DAM OF T-BONE

LEELANDS TRANSITION T7
SIRE **KAIRURU ABERDEEN 03 0047**
KAIRURU PLUM T44



LEELANDS QUINN Q24
LEELANDS PRINCESS P56
KAIRURU RICARDO R46 (ET)
KAIRURU PLUM P11

DAM **HARVIE MS FIREFLY 65P**
HARVIE LADIES MAN 4L
HARVIE MISS FIREFLY 51F

HARVIE HILLS 68H
HARVIE MISS JULIE 9J
HARVIE DEYNOTE 61D
HARVIE MISS NYLON 1Y

HARVIE LADIES MAN 4L {DLF IEF HYF}

CVIH 4L

March 6, 2001

BW: 94

Polled

Multi Trait Leader

\$40.00/dose • \$50.00/certificate
Minimum 5 doses Canada & U.S.

CE	BW	WW	YW	MILK	TM
1.2	4.8	51.2	77.4	29.0	54.6



HARVIE MS NYLON 102U

Daughter. & CWA Champion Female
HARVIE EXTRA 35E
SIRE **HARVIE HILLS 68H**
HARVIE MISS ANGIE 5A



HARVIE CLUB MED 11C
HARVIE MISS NYLON 1Y
REMITALL LEGACY ET 187X
WALPOLE MISS COED 38Y

DAM **HARVIE MISS JULIE 9J**
HARVIE GOVERNOR 40G
HARVIE MISS GINGER 10G

HARVIE DEYNOTE 61D
HARVIE ALICE 12A
HARVIE EXTRA 35E
EASTON 26Y IRON LADY

Hereford Herd Sires

HARVIE RAFTSMAN 16R {DLF IEF HYF}

CVIH 16R

February 8, 2005

BW: 83

Polled



Siring both top females and bulls
 \$40.00/dose • \$100.00/certificate
Minimum 5 doses Canada & U.S.

CE	BW	WW	YW	MILK	TM
-2.0	4.4	58.7	88.2	14.8	44.2



HARVIE OVHF Ms UNIQUE 80W

Daughter & CWA Champion Female
 REMITALL KEYNOTE 20X
 MISS CRAIGIE TRUSTMARK 10Y
 DURALTA 359S NYLON 16W
 CHSF 4R MISS CHOICE 11U

SIRE HARVIE HILLS 68H
HARVIE LADIES MAN 4L
 HARVIE MISS JULIE 9J P

HARVIE EXTRA 35E
 HARVIE MISS ANGIE 5A
 HARVIE GOVERNOR 40G
 HARVIE MISS GINGER 10G

DAM HARVIE DEYNOTE 61D
HARVIE MISS FIREFLY 51F
 HARVIE MISS NYLON 1Y

HARVIE ALL IN 14Z {DLF IEF HYF}

CVIH 14Z

January 6, 2012

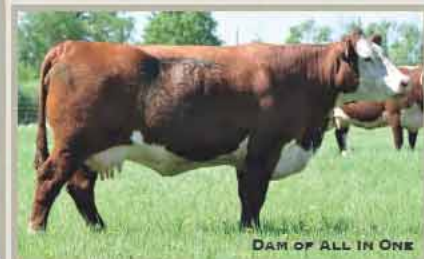
BW: 87

Polled



**Harvie Ranching's
 Exciting New Herd Sire**
 \$40.00/dose • no certificates required
Minimum 5 doses Canada & U.S.

CE	BW	WW	YW	MILK	TM
0.3	3.5	62.0	98.4	18.9	49.9



DAM OF ALL IN ONE

SIRE HARVIE TRAVELER 69T
HARVIE HIGH ROLLER ET 66X
 HARVIE DAN MS FIREFLY 69S

KAIRURU ABERDEEN 03 0047
 HARVIE PEARL 129P
 BR DM CHANNING ET
 HARVIE MS FIREFLY 65P

DAM HARVIE RAFTSMAN 16R
E 16R LADY RAFTSMAN U809
 E 19D WRANGLER STAR

HARVIE LADIES MAN 4L
 HARVIE MISS FIREFLY 51F
 NJW 1Y WRANGLER 19D
 B STAR MISCHIEF 803

Hereford Herd Sires HARVIE DAN RICOCHET 167U (DLF IEF HYF)

CVIH 167U

March 4, 2008

BW: 88

Polled

Calving ease with
added performance
Reference Sire Only

CE	BW	WW	YW	MILK	TM
-0.1	2.9	57.3	85.6	19.8	48.5



DAM OF RICOCHET



KAIRURU ABERDEEN 03 0047
SIRE **HARVIE SENSATION 26S**
HARVIE JACCI 82J

LEELANDS TRANSITION T7
KAIRURU PLUM T44
HARVIE GOVERNOR 40G
HARVIE MISS FIREFLY 51F

BR DM CHANNING ET
DAM **HARVIE DAN MS FIREFLY 69S**
HARVIE MS FIREFLY 65P

REMITALL ONLINE 122L
DM L1 DOMINETTE 820
HARVIE LADIES MAN 4L
HARVIE MISS FIREFLY 51F

HARVIE WINSTON 40Y (DLF IEF HYF)

CVIH 40Y

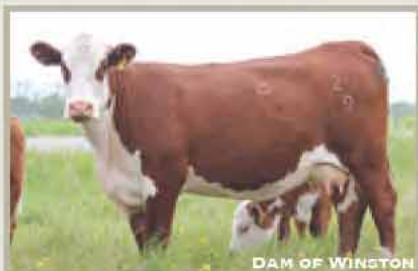
February 2, 2011

BW: 84

Polled

Harvie Ranching's Newest Herd Sire
Look for his progeny this fall

CE	BW	WW	YW	MILK	TM
2.1	3.2	62.5	95.7	20.6	51.9



DAM OF WINSTON



WILGOR 55K NORTHEASTERN OL 2N
SIRE **HARVIE WINSTON 5W**
HARVIE MS FIREFLY 30T

REMITALL ONLINE 122L
WILGOR 174H KEYLINE 29F 55K
OTAPAWA SKYMATE 2046 (ET)
HARVIE JACCI 82J

HARVIE TRAVELER 69T
DAM **HARVIE MS WILD FLOWER 24W**
RSK 4L SINTALUTA 5S

KAIRURU ABERDEEN 03 0047
HARVIE PEARL 129P
HARVIE LADIES MAN 4L
RSK 700E KOKANEE 3K

Lot 1 HARVIE CAJUN ET 325Y (DLF IEF HYF)

CVIH 325Y

April 4, 2011

BW: 92

Polled



- Herd Sire at Harvie Ranching
- Dam has produced 3 herd sires for Harvie Ranching, T-Bone, Hidalgo, and Cajun
- Full sister CWA Res Heifer Calf Champion
- Powerfull hip structure, lots of length

CE	BW	WW	YW	MILK	TM
0.8	3.6	55.2	89.6	21.3	48.9



DAM OF CAJUN

TH SHR 605 57G BISMARCK 243R
SIRE TH 75J 243R BAILOUT 144U ET
KB 615C NICKY 75J

RU 20X BOULDER 57G
YY 125Y PRIMROSE 605F
SQUARE-D FULLBACK 615C
KILMORLIE 359S NICKY 713D

HARVIE LADIES MAN 4L
DAM HARVIE MS FIREFLY 65P
HARVIE MISS FIREFLY 51F

HARVIE HILLS 68H
HARVIE MISS JULIE 9J
HARVIE DEYNOTE 61D
HARVIE MISS NYLON 1Y

Lot 2 HARVIE E MONTANA ET 17Z (DLF IEF HYF)

CVIH 17Z

January 7, 2012

BW: 85

Adj. Sale Wt: 1409

Polled



- Proven maternal powerhouses on both top and bottom of pedigree
- Full sister was high selling female in 2012 Internet Sale
- Owned with Ehlke Herefords, MT
- Heifer Approved

CE	BW	WW	YW	MILK	TM
-4.9	4.6	46.9	73.8	25.9	+49.4



HARVIE E MS FIREFLY ET 19Z

REMITALL BOOMER 46B
SIRE PW VICTOR BOOMER P606
PW VICTORIA 964 8114

REMITALL KEYNOTE 20X
REMITALL SALLY'S LASS ET 120X
RHF VICTOR 266 964
HVF VICTORIA 1121 05

HARVIE DEYNOTE 61D
DAM HARVIE MISS FIREFLY 51F
HARVIE MISS NYLON 1Y

Full Sister
REMITALL KEYNOTE 20X
MISS CRAIGIE TRUSTMARK 10Y
DURALTA 359S NYLON 16W
CHSF 4R MISS CHOICE 11U

Lot 3 HARVIE FIRST CLASS 29Z (DLF IEF HYF)

CVIH 29Z

January 23, 2012

BW: 97

Adj. Sale Wt: 1503

Polled

- Class Winner at Farmfair International 2012
- Maternal sister was a high seller to Edenburns in IL, USA
- Super deep bodied, lots of length



CE	BW	WW	YW	MILK	TM
-1.5	4.6	50.7	83.6	18.2	43.6



SIRE HARVIE TAILOR MADE ET 7W
 HARVIE TRAVELER 69T
 HARVIE MISS FIREFLY 51F

KAIRURU ABERDEEN 03 0047
 HARVIE PEARL 129P
 HARVIE DEYNOTE 61D
 HARVIE MISS NYLON 1Y

DAM HARVIE MS PRECIOUS 4U
 CCR 57G STAMINA ET 199S
 OVHF PRECIOUS EMMA 17N

RU 20X BOULDER 57G
 GOLDEN-OAK 46B KEEPSAKE 23K
 OVHF 20X MASTER KEY 5H
 CASSBURN PRECIOUS A-SOME 1E

Lot 4 HARVIE TAILOR MADE 51Z (DLF IEF HYF)

CVIH 51Z

January 31, 2012

BW: 93

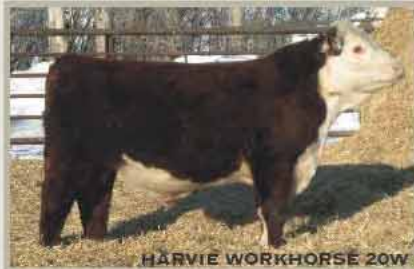
Adj. Sale Wt: 1456

Polled

- Cherry red, lots of muscle, out of a real hard working cow
- Maternal brother sold to Troy Hagel, AB
- Maternal sister sold to 3DL Herefords, other sister retained in herd



CE	BW	WW	YW	MILK	TM
-1.9	4.0	54.4	86.6	14.3	41.5



SIRE HARVIE TAILOR MADE ET 7W
 HARVIE TRAVELER 69T
 HARVIE MISS FIREFLY 51F

KAIRURU ABERDEEN 03 0047
 HARVIE PEARL 129P
 HARVIE DEYNOTE 61D
 HARVIE MISS NYLON 1Y

DAM HARVIE MS TARA 21T
 HARVIE RAFTSMAN 16R
 HARVIE PURPLE 5P

HARVIE LADIES MAN 4L
 HARVIE MISS FIREFLY 51F
 HARVIE KNOCKOUT 98K
 HARVIE MS MARYANN 89M

Lot 5 HARVIE TAILOR MADE 66Z

CVIH 66Z

February 3, 2012

BW: 94

Adj. Sale Wt: 1293

Polled



- Piles of length, hair and style
- Dam purchased from Mohican West, double bred P606 for maternal strength

ESTIMATED EPDS

CE	BW	WW	YW	MILK	TM
-4.3	5.9	57.3	93.5	22.0	50.7

SIRE HARVIE TRAVELER 69T
HARVIE TAILOR MADE ET 7W
 HARVIE MISS FIREFLY 51F

KAIRURU ABERDEEN 03 0047
 HARVIE PEARL 129P
 HARVIE DEYNOTE 61
 HARVIE MISS NYLON 1Y

DAM MOHICAN RANGELAND 221R
MOHICAN FANCY 120W
 LAGRAND FANCY 245R ET

PW MOHICAN NASDAQ P316
 MOHICAN PET 184L
 PW VICTOR BOOMER P606
 MOHICAN FANCY 55H

Lot 6 HARVIE TAILOR MADE 69Z {DLF IEF HYF}

CVIH 69Z

February 4, 2012

BW: 102

Adj. Sale Wt: 1460

Polled



- Built like a tank with a Corvette front end
- One of our favorite Tailor Made calves ever produced
- Dam comes from the great Duralta Omega donor cow family

CE	BW	WW	YW	MILK	TM
-1.9	5.6	59.0	96.6	14.7	44.2

SIRE HARVIE TRAVELER 69T
HARVIE TAILOR MADE ET 7W
 HARVIE MISS FIREFLY 51F

KAIRURU ABERDEEN 03 0047
 HARVIE PEARL 129P
 HARVIE DEYNOTE 61
 HARVIE MISS NYLON 1Y

DAM WLB GLOBAL 72M 50S
HARVIE MS OMEGA 58W
 COPPERTONE 262L OMEGA ET 1S

HAROLDSON WLB MUTUMBO ET 72M
 WLB 035J FLORA 14N
 REMITALL OLYMPIAN ET 262L
 COPPERTONE 42H OMEGA 1N

Lot 7 HARVIE NBF1 WEST COAST ET 73Z {DLF IEF HYF}

CVIH 73Z

February 5, 2012

BW: 88

Adj. Sale Wt: 1253

Polled



- Moderate framed, easy doing, dark red, full pigment
- Dam was 2010 CWA Champion Female
- Sire sold for \$80,000 for a 1/3 interest
- Owned with North Bluff Farms, BC

ESTIMATED EPDS

CE	BW	WW	YW	MILK	TM
-2.2	6.2	58.6	95.4	24.2	53.5

SIRE HARVIE TRAVELER 69T
HARVIE TAILOR MADE ET 7W
 HARVIE MISS FIREFLY 51F

KAIRURU ABERDEEN 03 0047
 HARVIE PEARL 129P
 HARVIE DEYNOTE 61
 HARVIE MISS NYLON 1Y

DAM HARVIE LADIES MAN 4L
HARVIE MS NYLON 102U
 HARVIE MS NYLON ET 34R

HARVIE HILLS 68H
 HARVIE MISS JULIE 9J
 BRL CALL 100L
 HARVIE MISS NYLON 1Y



Dam & CWA Champion Female

Lot 8 HARVIE FIRE IT UP ET 91Z (DLF IEF HYF)

CVIH 91Z

February 10, 2012

BW: 87

Adj. Sale Wt: 1226

Polled

- Very short marked, straight in his lines, with style to burn
- Dam is a donor cow
- Maternal brother to Harvie High Roller ET 66X, 2 time Denver Division Champion



ESTIMATED EPDS

CE	BW	WW	YW	MILK	TM
-1.4	4.6	63.3	101.1	20.0	51.7

HARVIE TRAVELER 69T
 SIRE HARVIE TAILOR MADE ET 7W
 HARVIE MISS FIREFLY 51F

KAIRURU ABERDEEN 03 0047
 HARVIE PEARL 129P
 HARVIE DEYNOTE 61
 HARVIE MISS NYLON 1Y

BR DM CHANNING ET
 DAM HARVIE DAN MS FIREFLY 69S
 HARVIE MS FIREFLY 65P

REMITALL ONLINE 122L
 DM L1 DOMINETTE 820
 HARVIE LADIES MAN 4L
 HARVIE MISS FIREFLY 51F

Lot 9 HARVIE CHANGER 130Z (DLF IEF HYF)

CVIH 130Z

February 21, 2012

BW: 94

Adj. Sale Wt: 1395

Polled

- Super eye catching bull, lots of length and muscle
- Dam is a donor cow for Harvie Ranching
- 9 Maternal brothers working in purebred and commercial herds
- 3 maternal sisters in herd including a Denver Class Winner



CE	BW	WW	YW	MILK	TM
-1.4	5.0	53.5	88.7	15.7	42.5

HARVIE TRAVELER 69T
 SIRE HARVIE TAILOR MADE ET 7W
 HARVIE MISS FIREFLY 51F

KAIRURU ABERDEEN 03 0047
 HARVIE PEARL 129P
 HARVIE DEYNOTE 61D
 HARVIE MISS NYLON 1Y

GNF 122L LINEDRIVE ET 56N
 DAM DTHF RAVIN 144R
 DTHF MACEY 144M

REMITALL ONLINE 122L
 WALPOLE TEQUILLA ET 13A
 DTHF WLB FEDERAL 10E
 TRUMAC MISS RAIDER 5J

Lot 10 HARVIE TAILOR MADE 140Z (DLF IEF HYF)

CVIH 140Z

February 24, 2012

BW: 98

Adj. Sale Wt: 1584

Polled

- One of the highest performing bulls on offer
- Hilary Cow family has produced us several herd sires for Harvie Ranching
- Maternal brothers sold to Jim Rosenberg IL, USA and George Astleford AB



CE	BW	WW	YW	MILK	TM
-3.0	5.2	60.5	98.6	19.3	49.6

HARVIE TRAVELER 69T
 SIRE HARVIE TAILOR MADE ET 7W
 HARVIE MISS FIREFLY 51F

KAIRURU ABERDEEN 03 0047
 HARVIE PEARL 129P
 HARVIE DEYNOTE 61D
 HARVIE MISS NYLON 1Y

MC RANGER 9615
 DAM HARVIE MS HILARY ET 104T
 HARVIE MISS HILARY 90H

CIRCLE-D WRANGLER 832W
 SBF ROYAL GYPSY
 HARVIE EXTRA 35E
 CROMDALE 1Z TAMARACK 25B

Lot 11 HARVIE TAILOR MADE 180Z

(DLF IEF HYF)

CVIH 180Z
March 20, 2012

BW: 102
Adj. Sale Wt: 1447

Polled



Lot 12 HARVIE LADIES MAN ET 266Z

(DLF IEF HYF)

CVIH 266Z
February 8, 2012

BW: 108
Adj. Sale Wt: 1305

Polled



- Wow a 1447lbs yearling wt this bull is going to add pounds
- Maternal brother sold to KS Stock Farms AB

CE	BW	WW	YW	MILK	TM
-2.8	6.0	60.0	98.3	18.6	48.6

SIRE HARVIE TRAVELER 69T
HARVIE TAILOR MADE ET 7W
HARVIE MISS FIREFLY 51F

DAM HARVIE LADIES MAN 4L
HIGHMARK ULYSSIA 157T
HARVIE MISS HILLS 70H

KAIRURU ABERDEEN 03 0047
HARVIE PEARL 129P P C02845247
HARVIE DEYNOTE 61D
HARVIE MISS NYLON 1Y
HARVIE HILLS 68H
HARVIE MISS JULIE 9J
HARVIE DEYNOTE 61D
HARVIE MISS DIANA 60D

- Soft made, deep bodied, fully pigmented bull
- Dam is a daughter of the great Firefly 51F cow
- Full brother was feature bull for Ehlke Herefords at Denver

ESTIMATED EPDS

CE	BW	WW	YW	MILK	TM
-	4.6	49	75	27	-0.9

SIRE HARVIE HILLS 68H
HARVIE LADIES MAN 4L
HARVIE MISS JULIE 9J

DAM PW VICTOR BOOMER P606
HARVIE MS FIREFLY ET 186W
HARVIE MISS FIREFLY 51F

HARVIE EXTRA 35E
HARVIE MISS ANGIE 5A
HARVIE GOVERNOR 40G
HARVIE MISS GINGER 10G
REMITALL BOOMER 46B
PW VICTORIA 964 8114
HARVIE DEYNOTE 61D
HARVIE MISS NYLON 1Y

Lot 13 HARVIE LADIES MAN ET 147Z (DLF IEF HYF)

CVIH 147Z

March 2, 2012

BW: 95

Adj. Sale Wt: 1355

Polled



- Soggy ribbed meat machine, with a maternal packed pedigree
- Full sib to 2010 CWA Champion Female

CE	BW	WW	YW	MILK	TM
0.9	4.6	44.8	72.4	24.2	46.6



HARVIE MS NYLON 102U

Full Sister & CWA Champion Female

SIRE HARVIE HILLS 68H
HARVIE LADIES MAN 4L
HARVIE MISS JULIE 9J

HARVIE EXTRA 35E
HARVIE MISS ANGIE 5A
HARVIE GOVERNOR 40G
HARVIE MISS GINGER 10G

DAM BRL CALL 100L
HARVIE MS NYLON ET 34R
HARVIE MISS NYLON 1Y

H 8E EMBRACER 8006
BRL DELUXIE 100A
DURALTA 359S NYLON 16W
CHSF 4R MISS CHOICE 11U

Lot 14 HARVIE AXA T-BONE 56Z (DLF IEF HYF)

CVIH 56Z

February 1, 2012

BW: 108

Adj. Sale Wt: 1596

Polled

- One of the biggesthipped hereford bulls you'll have ever seen
- Huge muscle, piles of rib, great haired
- Maternal brothers sold to Lorenzen Farms II, USA and Tail Creek Farms AB
- Maternal sister is dam of lot 16

CE	BW	WW	YW	MILK	TM
-5.3	7.2	61.3	102.4	18.9	49.6



KAIRURU ABERDEEN 03 0047
SIRE **HARVIE DAN T-BONE 196T**
HARVIE MS FIREFLY 65P

LEELANDS TRANSITION T7
KAIRURU PLUM T44
HARVIE LADIES MAN 4L
HARVIE MISS FIREFLY 51F

DAM **BAR-J-M LA SENZA 14S**
REMITALL PATRIOT ET 13P
MHPH MS 122L JADE 113N

REMITALL OLYMPIAN ET 262L
REMITALL GINGER 23G
REMITALL ONLINE 122L
MHPH MS 60D JADE 110K

Lot 15 HARVIE T-BONE 68Z (DLF IEF HYF)

CVIH 68Z

February 4, 2012

BW: 89

Adj. Sale Wt: 1471

Polled

- Deep sided, easy doing, heavy muscled
- Maternal brothers sold to Stockwell Polled Herefords AB
- Maternal sisters sold to Graves Ranch TX, USA and SS Cattle Company, AB

CE	BW	WW	YW	MILK	TM
1.1	2.6	43.5	66.2	20.1	41.9



DAM OF T-BONE

KAIRURU ABERDEEN 03 0047
SIRE **HARVIE DAN T-BONE 196T**
HARVIE MS FIREFLY 65P

LEELANDS TRANSITION T7
KAIRURU PLUM T44
HARVIE LADIES MAN 4L
HARVIE MISS FIREFLY 51F



DAM **HARVIE PRINCESS 78P**
HARVIE LADIES MAN 4L
HARVIE MISS CHAMPAGNE 36C

HARVIE HILLS 68H
HARVIE MISS JULIE 9J
HARVIE A-RACE 28A
HARVIE MISS PIONEER 21U

Lot 16 HARVIE HIDALGO 102Z (DLF IEF HYF)

CVIH 102Z

February 12, 2012

BW: 89

Adj. Sale Wt: 1290

Polled

- Stout, lots of muscle and easy fleshing
- Maternal brother sold to Leonard Paget, AB
- Maternal sister was a high seller to John Schmit MN, USA

CE	BW	WW	YW	MILK	TM
-2.1	3.9	42.5	73.6	16.9	38.2



HARVIE MS JADE 57Y

KAIRURU ABERDEEN 03 0047
SIRE **HARVIE DAN HIDALGO ET 193U**
HARVIE MS FIREFLY 65P

LEELANDS TRANSITION T7
KAIRURU PLUM T44
HARVIE LADIES MAN 4L
HARVIE MISS FIREFLY 51F

Maternal Sister



DAM **RVP 2013 UNLIMITED 14U**
HB STAR BATTLE GROUND 2013
BAR-J-M LA SENZA 14S

C-S PURE GOLD 98170
MSU MISS WRANGLER 61J
REMITALL PATRIOT ET 13P
MHPH MS 122L JADE 113N

Lot 17 HARVIE OVHF SOUTHERN 72Z (DLF IEF HYF)

CVIH 72Z

February 4, 2012

BW: 90

Adj. Sale Wt: 1474

Polled



- Long patterned, big bodied, athletic made bull
- Dam's full sister was 2012 CWA Grand Champion Female
- 2 daughters retained in herd

CE	BW	WW	YW	MILK	TM
-0.8	4.8	61.9	97.5	23.4	54.4



DAM & LOT 17 THIS SUMMER

SIRE JDH 10S YANKEE 39X
 AH YANKEE 10S
 AH JDH WRANGLER QUEEN 22T ET

REMITALL ONLINE 122L
 CRR D03 VIOLET 349
 JDH 15 WRANGLER 25L
 AH MS LADY QUEEN 14L

DAM HARVIE OVHF UNIQUE 166T
 HARVIE RAFTSMAN 16R
 BBSF 100L UNIQUE ET 131R

HARVIE LADIES MAN 4L
 HARVIE MISS FIREFLY 51F
 BRL CALL 100L
 BBSF 7C UNIQUE 1K

Lot 18 HARVIE YANKEE 88Z TWIN

CVIH 88Z

BW: 76

February 9, 2012

Adj. Sale Wt: 1323

Polled



Lot 19 HARVIE YANKEE 89Z TWIN

CVIH 89Z

BW: 77

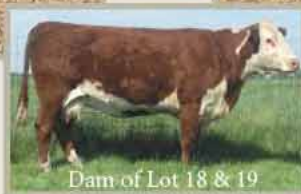
February 9, 2012

Adj. Sale Wt: 1256

Polled



CE	BW	WW	YW	MILK	TM
0.8	3.6	55.2	92.4	25.8	53.4



Dam of Lot 18 & 19

CE	BW	WW	YW	MILK	TM
0.7	3.6	51.8	88.4	25.8	51.7

- Long spined, heavy haired, outcross pedigree pair of bulls
- Maternal brothers sold to Til-Toba Polled Herefords, Lunde Farms
- 3 sisters retained in herd including dam to lot 24

SIRE JDH 10S YANKEE 39X
 AH YANKEE 10S
 AH JDH WRANGLER QUEEN 22T ET

REMITALL ONLINE 122L
 CRR D03 VIOLET 349
 JDH 15 WRANGLER 25L
 AH MS LADY QUEEN 14L

DAM HARVIE MS FIREBIRD 135P
 LEVELDALE KODIAK 23C ET 19K
 HARVIE MISS FIREBIRD 41F

JSP 37 271 DEV0 23C
 LEVELDALE MISS VARSITY VIC 26D
 HARVIE DEYNOTE 61D
 WTK 21N GWEN 18S

Lot 20 HARVIE YANKEE 40Z (DLF IEF HYF)

CVIH 40Z

January 28, 2012

BW: 98

Adj. Sale Wt: 1527

Polled

- Performance bull off a first calf heifer
- Dam's maternal brother sells as lot 21



CE	BW	WW	YW	MILK	TM
-2.8	+7.5	+67.9	+113.3	+23.8	+57.8



SIRE OF LOTS 17 TO 20

SIRE **JDH 10S YANKEE 39X**
 AH YANKEE 10S
 AH JDH WRANGLER QUEEN 22T ET

REMITALL ONLINE 122L
 CRR D03 VIOLET 349
 JDH 15 WRANGLER 25L
 AH MS LADY QUEEN 14L

DAM **HARVIE MS PERFECTA 41X**
 RU DUSTER 60D
 HARVIE PERFECTA 43P

REMITALL KEYNOTE 20X
 RU SARA 60X P C02359307
 HARVIE LADIES MAN 4L
 HARVIE MISS KELLY 36K

Lot 21 HARVIE HIGH ROLLER 45Z TWIN (DLF IEF HYF)

CVIH 45Z

January 30, 2012

BW: 101

Adj. Sale Wt: 1440

Polled

- Rugged made, heavy muscled, cherry red bull
- Dam has 3 daughters in herd including dam of lot 20



CE	BW	WW	YW	MILK	TM
-3.5	+8.1	+75.2	+117.3	+20.7	+58.3



SIRE OF LOT 21

SIRE **HARVIE HIGH ROLLER ET 66X**
 HARVIE TRAVELER 69T
 HARVIE DAN MS FIREFLY 69S

KAIRURU ABERDEEN 03 0047
 HARVIE PEARL 129P P C02845247
 BR DM CHANNING ET
 HARVIE MS FIREFLY 65P

DAM **HARVIE PERFECTA 43P**
 HARVIE LADIES MAN 4L
 HARVIE MISS KELLY 36K

HARVIE HILLS 68H
 HARVIE MISS JULIE 9J
 HARVIE DEYNOTE 61D
 HARVIE MISS EDITION 43E

Lot 22 HARVIE E MC VICTOR 39Z {DLF IEF HYF}

CVIH 39Z

January 28, 2012

BW: 78

Adj. Sale Wt: 1301

Polled



HARVIE E MC MS FIREFLY 50X
Maternal Sister

CE	BW	WW	YW	MILK	TM
5.2	0.5	51.3	81.7	17.4	43.1

- Clean front, short marked calving ease bull
- Maternal brother sold to Johnson Polled Herefords USA
- Maternal sister sold for \$14,000 to Bacon's AK, USA
- Owned with Ehlke Herefords & McMurry Herefords
- Heifer Approved

DRF JWR PRINCE VICTOR 71I
SIRE **TH 122 71I VICTOR 719T**
KBCR 19D DOMINETTE 122

HRP THM VICTOR 109W 9329
RHF 964 VICTRA 4057 P A22857143
NJW 1Y WRANGLER 19D
KBCR DOMINETTE 9112

KAIRURU ABERDEEN 03 0047
DAM **E MC ABERDEEN LANI U820 ET**
HARVIE MISS FIREFLY 51F

LEELANDS TRANSITION T7
KAIRURU PLUM T44
HARVIE DEYNOTE 61D
HARVIE MISS NYLON 1Y

Lot 23 HAVIE NIGHT LIFE 50Z {DLF IEF HYF}

CVIH 50Z

January 31, 2012

BW: 87

Adj. Sale Wt: 1425

Polled



HARVIE SINGLE MALT 52Y
2012 High Seller Maternal Brother to Dam

CE	BW	WW	YW	MILK	TM
4.0	3.1	65.7	97.0	22.8	55.7

- Performance, muscle and calving ease wrapped into one
- Dam's maternal sister was our high selling bull last year to BBJ Polled Herefords, SK
- Heifer Approved

DRF JWR PRINCE VICTOR 71I
SIRE **TH 122 71I VICTOR 719T**
KBCR 19D DOMINETTE 122

HRP THM VICTOR 109W 9329
RHF 964 VICTRA 4057 P A22857143
NJW 1Y WRANGLER 19D
KBCR DOMINETTE 9112

KAIRURU ABERDEEN 03 0047
DAM **HARVIE MS GWEN 36X**
HARVIE MS GWEN 177T

KAIRURU PEARL 129P
HARVIE LADIES MAN 4L
HARVIE GWEN MARVEL 6G

Lot 24 HARVIE VICTOR 62Z {DLF IEF HYF}

CVIH 62Z

February 2, 2012

BW: 76

Adj. Sale Wt: 1392

Polled



CE	BW	WW	YW	MILK	TM
6.0	0.7	60.2	89.0	23.1	53.2

- Lot 24 Harvie Victor 62Z Feb 02, 2012 Bw 76lbs Sale Wt 1392lbs
- Stylish, easy doing, long bodied a real Sale Feature
- One of Harvie Ranching elite cow families
- Heifer Approved

DRF JWR PRINCE VICTOR 71I
SIRE **TH 122 71I VICTOR 719T**
KBCR 19D DOMINETTE 122

HRP THM VICTOR 109W 9329
RHF 964 VICTRA 4057
NJW 1Y WRANGLER 19D
KBCR DOMINETTE 9112

HARVIE DAN RICOCHET 167U
DAM **HARVIE MS FIREBIRD 90X**
HARVIE MS FIREBIRD 135P

HARVIE SENSATION 26S
HARVIE DAN MS FIREFLY 69S
LEVELDALE KODIAK 23C ET 19K
HARVIE MISS FIREBIRD 41F

Lot 25 HARVIE GUNNER 54Z [DLF IEF HYF]

CVIH 54Z

January 31, 2012

BW: 73

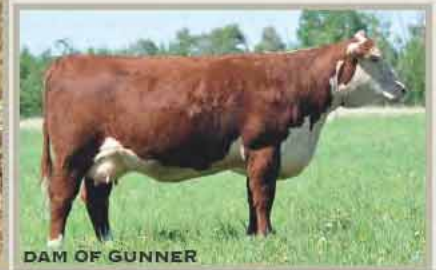
Adj. Sale Wt: 1294

Polled



- Real eye catcher, with his slick front end and explosive hip
- Outcross pedigree with a great set of epd's
- His dam is as pretty as they come
- Heifer Approved

CE	BW	WW	YW	MILK	TM
1.7	1.0	49.7	72.6	20.6	45.5



DAM OF GUNNER

SIRE HARVIE SENSATION 26S
HARVIE DAN RICOCHET 167U
HARVIE DAN MS FIREFLY 69S

KAIRURU ABERDEEN 03 0047
HARVIE JACCI 82J
BR DM CHANNING ET
HARVIE MS FIREFLY 65P

DAM E BRAXTON 719
HARVIE MS BRAXTON 160X
MC LADY HARVIE T792

ANCHOR BRAXTON
ANCHOR 17R
HARVIE LADIES MAN 4L
MC 9615 DUTCHESS 9833

Lot 26 HARVIE BOULDER ET 49Z

[DLF IEF HYF]

CVIH 49Z

BW: 100

Polled

January 30, 2012

Adj. Sale Wt: 1413

2012 Hwy 21 RANCH RODEO CHAMPIONS



HARVIE TYPHOON ET 171T

Full Brother

- Big ribbed rugged made ranch bull
- Hilary Cow is a donor cow for Harvie Ranching and Copper Creek Ranch
- Progeny sold all over North America

ESTIMATED EPDS					
CE	BW	WW	YW	MILK	TM
1.3	3.1	44.5	81.7	16.1	38.4

SIRE REMITALL KEYNOTE 20X
RU 20X BOULDER 57G
RU 10A DEW 57D

REMITALL TEAMSTER 9T
REMITALL PATRICIA 99P
REMITALL ACME 10A
RU 40L BUTTERCUP 57Z

DAM HARVIE EXTRA 35E
HARVIE MISS HILARY 90H
CROMDALE 1Z TAMARACK 25B

HARVIE CLUB MED 11C
HARVIE MISS NYLON 1Y
CROMDALE R11 TRAVELER 1Z
CROMDALE 12R IVY 14X



Cole Harvie, Scott Pimm, Scott Harvie & Colter McDonald

Simmental Herd Sires HARVIE JDF WALLBANGER 111X

HAR 111X

January 13, 2010

BW: 98

Homo Polled



\$45,000 top seller at Checkers Sale 2011, that has proven his worth with excellent progeny across Canada

US only semen packages available

CE	BWT	WWT	YWT	MCE	MWWT	MILK
7.1	3.2	56.0	94.6	5.8	28.0	0.0

Sire **SHS ENTICER P1B**
ROCKY HILLS JO

TE MCCLINTOCK G28
BOZ SWEET TEMPTATION
RHR GRANITE 140G
ROCKY HILLS E JAY

Dam **JDF PEPSI 61U**
JDF MATTIE 61R

REMINGTON RED LABEL HR
DRAKE SOFT TOUCH 15M
GFL MAGNUM K52
ROO KRYSTAL 34K

ERIXON WELLINGTON 133W

BOBE 133W

March 3, 2009

BW: 104

Homo Polled



Performance siring bull

CE	BWT	WWT	YWT	MCE	MWWT	MILK
1.6	6.1	52.6	98.1	4.5	31.4	5.1

Sire **MCINTOSH EDGE 15T**
BAJM JUST RIGHT 10L

CNS DREAM ON L186
BB LITTLE RED RODEO
HOOK'S RED QUORUM 55H
BAJM CORDELIA 9J

Dam **LAZY BAR-B SUSIEQ 6P**
LAZY BAR-B MILE 32M

MV RED LIGHT 406
HOOK'S APPLAUSE 59F
CITY VIEW RED MILESTONE
LAZY BAR-B REDTIME 35H

Simmental Herd Sires HARVIE BOONDOCK 12Z

HAR 12Z

January 5, 2012

BW: 105

Homo Polled

Many Time Champion Bull &
Full brother sells as lot 30

US only semen packages available

CE	BWT	WWT	YWT	MCE	MWWT	MILK
4.9	5.9	40.2	66.2	6.4	22.5	2.4



TH BLACK EDITION 8R
SIRE **DESTINY BUCKEYE**
DESTINY MAGNUM TWAIN

TNT DYNAMITE BLACK L137
BBN MS BLACK LADY 28H
GFI MAGNUM K52
DESTINY FINE TUNE SHANIA

REMINGTON ON TARGET 2S
DAM **JDF PEPSI 61U**
JDF MATTIE 61R

REMINGTON RED LABEL HR
DRAKE SOFT TOUCH 15M
GFI MAGNUM K52
ROO KRYSTAL 34K

KOPP FINAL DRIVE 33Y

KOP 33Y

January 9, 2011

BW: 90

Homo Polled

Calving Ease, Meat Machine

CE	BWT	WWT	YWT	MCE	MWWT	MILK
9.1	1.5	35.2	55.8	6.8	25.8	8.2



WHEATLAND RED TEDDY 457P
SIRE **IPU RED TOUCHDOWN 32S**
IPU RED POCAHONTAS 52N

WHEATLAND BULL 131L
WHEATLAND LADY 902J
HART RED CHIEF J242
KAPPES JADE J144

MUIRHEAD LIVE WIRE 95R
DAM **KOP MS LIVEWIRE 40U**
KOP MS FREIGHTLINER 59M

KENCO/MF POWERLINE 204L
GFP MISS BEARCLAW 100M
SMITHBILT FREIGHTLINER91J
BAR 5 LADY DI 280D

Lot 27

HARVIE MILE MARKER 255Z

HAR 255Z

January 30, 2012

BW: 94

Adj. Sale Wt: 1533

Homo Polled Homo Black



HARVE JDF PEPSI 22Z

\$17,000 Maternal Sister

- 5 maternal sibs averaged \$21,600
- Sought after blaze face, longer than a freight train with a huge hip
- Full brother to Harvie JDF Wallbanger 111X

CE	BWT	WWT	YWT	MCE	MWWT	MILK
5.4	3.5	48.4	85.2	6.2	25.7	1.5

TCF/RCC TEMPTATION GJ640
 SIRE **SHS ENTICER P1B**
 ROCKY HILLS JO

TE MCCLINTOCK G28
 BOZ SWEET TEMPTATION
 RHR GRANITE 140G
 ROCKY HILLS E JAY

REMINGTON ON TARGET 2S
 DAW **JDF PEPSI 61U**
 JDF MATTIE 61R

REMINGTON RED LABEL HR
 DRAKE SOFT TOUCH 15M
 GFI MAGNUM K52
 ROO KRYSTAL 34K

Lot 28

HARVIE WALLBANGER 32Z

HAR 32Z

January 24, 2012

BW: 90

Adj. Sale Wt: 1662

Homo Polled Hetro Black

- Ian's pick of the Simmental bulls
- Good haired, super long bodied, loads of muscle and performance and a 90lbs BW
- Maternal brother to dam was Res Champion Bull at Farmfair International

CE	BWT	WWT	YWT	MCE	MWWT	MILK
9.1	1.1	46.6	82.7	5.8	23.3	0.0



SIRE OF LOT 29



SIRE **HARVIE JDF WALLBANGER 111X**
SHS ENTICER P1B
JDF PEPSI 61U

TCF/RCC TEMPTATION GJ640
ROCKY HILLS JO
REMINGTON ON TARGET 2S
JDF MATTIE 61R

DAM **HARVIE MS TRUFFLE 35X**
TNT TOP GUN R244
JDN PRAIRIE PARFAIT 27L

TNT GUNNER N208
TNT MISS SADIE M68
ER RED DECK 639D
LFE TRUFFLE 42H

Lot 29

HARVIE SWEET TALKER 6Z

HAR 6Z

January 2, 2012

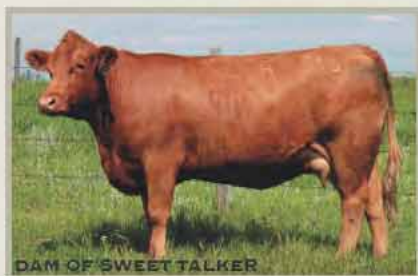
BW: 102

Adj. Sale Wt: 1579

Homo Polled Red

- Heavy haired, big topped, athletic made bull
- Dam is a daughter of Westway Farms most proven cow family Red Licious
- Wallbanger progeny dominated the show and sale ring last fall

CE	BWT	WWT	YWT	MCE	MWWT	MILK
7.1	3.3	47.4	79.6	6.3	24.8	1.1



DAM OF SWEET TALKER



SIRE **HARVIE JDF WALLBANGER 111X**
SHS ENTICER P1B
JDF PEPSI 61U

TCF/RCC TEMPTATION GJ640
ROCKY HILLS JO
REMINGTON ON TARGET 2S
JDF MATTIE 61R

DAM **WFL LICIOUS LASS 9026W**
R PLUS BLACKEDGE
WFL RED LICIOUS

LAZY S BLACK 29N
SUN STAR MISS DRIVE
LFE BLACK BULLSEYE 319J
WFL RED DOLL 517H

Lot 30

HARVIE BULLSEYE 2Z

HAR 2X

January 1, 2012

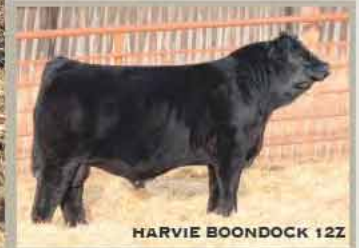
Bw: 82

Adj. Sale Wt: 1571

Homo Polled Hetro Black



- Free moving, explosive muscle shape, big testicles, good haired and calving easy
- Olds Fall Classic Res Bull Calf Champion
- Full brother sold for \$30,000 to Doll Brothers ND, USA and Boondock syndicate
- Heifer Approved



HARVIE BOONDOCK 12Z

\$30,00 Full Brother

CE	BWT	WWT	YWT	MCE	MWWT	MILK
4.9	3.3	34.4	58.5	6.4	19.6	2.4

TH BLACK EDITION 8R
SIRE DESTINY BUCKEYE
 DESTINY MAGNUM TWAIN

TNT DYNAMITE BLACK L137
 BBN MS BLACK LADY 28H
 GFI MAGNUM K52
 DESTINY FINE TUNE SHANIA

REMINGTON ON TARGET 2S
DAM JDF PEPSI 61U
 JDF MATTIE 61R

REMINGTON RED LABEL HR
 DRAKE SOFT TOUCH 15M
 GFI MAGNUM K52
 ROO KRYSAL 34K

Lot 31

HARVIE STUBBY 55Z

HAR 55Z

February 1, 2012

Bw: 102

Adj. Sale Wt: 1309

Polled Black



- Moderate frame, deep bodied, easy fleshing
- Dam is sired by one of the most powerful female producers' Tracker

CE	BWT	WWT	YWT	MCE	MWWT	MILK
6.6	4.2	37.7	70.2	7.5	25.6	6.7



HARVIE JDF PEPSI 22Z

R PLUS BLACKEDGE
SIRE LFE BS LEWIS 322U
 LFE BS MS ARNOLD 135S

LAZY S BLACK 29N
 SUN STAR MISS DRIVE
 LFE BOMBSHELL 508N
 LFE MISS ARNOLD 90P

CG TRACKER 45T
DAM KOP MS TRACKER 111X
 KOP MS KNIGHT 50S

Stubby Daughter
 DOUBLE BAR D DRIFTWOOD 83
 CG BLACK GENIE 371N
 KOP MR MIDNIGHT 114M
 KOP BLACK REALITY 1N

Lot 32 HARVIE WELLINGTON 26Z

HAR 26Z

January 22, 2012

Bw: 88

Adj. Sale Wt: 1489

Homo Polled

- Super deep sided soft made bull
- Full brothers sell as lot 33, 34, 35

CE	BWT	WWT	YWT	MCE	MWWT	MILK
2.9	3.2	45.5	84.7	4.4	25.7	2.9

MCINTOSH EDGE 15T
 SIRE **ERIXON WELLINGTON 133W**
 LAZY BAR-B SUSIEQ 6P

SF WHAT A DREAM
 JUST RIGHT 10L
 HOOK'S RED QUORUM 55H
 LAZY BAR-B MILE 32M



TNT TOP GUN R244
 DAM **JFRS MS 50W**
 JFRS MS RED LABEL 15S

TNT GUNNER N208
 TNT MISS SADIE M68
 REMINGTON RED LABEL HR
 JFRS LINDA 42L

Lot 33 HARVIE PRIME 34Z

HAR 34Z

January 25, 2012

Bw: 96

Adj. Sale Wt: 1636

Hetro Polled

- Loads of performance, muscle and hair
- Dam was a class winner at CWA

CE	BWT	WWT	YWT	MCE	MWWT	MILK
2.9	4.2	47.9	87.8	4.4	26.9	2.9

MCINTOSH EDGE 15T
 SIRE **ERIXON WELLINGTON 133W**
 LAZY BAR-B SUSIEQ 6P

SF WHAT A DREAM
 BAJM JUST RIGHT 10L
 HOOK'S RED QUORUM 55H
 LAZY BAR-B MILE 32M



TNT TOP GUN R244
 DAM **JFRS MS 50W**
 JFRS MS RED LABEL 15S

TNT GUNNER N208
 TNT MISS SADIE M68
 REMINGTON RED LABEL HR
 JFRS LINDA 42L

Lot 34 HARVIE WELLINGTON 112Z TWIN

HAR 112Z

Feb 16, 2012

Bw: 78

Adj. Sale Wt: 1423

Homo Polled Red

- Moderate framed and packed full of muscle
- Lots 34 & 35 are the result of an embryo splitting

CE	BWT	WWT	YWT	MCE	MWWT	MILK
2.9	4.2	47.7	87.6	4.4	26.8	2.9

MCINTOSH EDGE 15T
 SIRE **ERIXON WELLINGTON 133W**
 LAZY BAR-B SUSIEQ 6P

SF WHAT A DREAM
 BAJM JUST RIGHT 10L
 HOOK'S RED QUORUM 55H
 LAZY BAR-B MILE 32M



TNT TOP GUN R244
 DAM **JFRS MS 50W**
 JFRS MS RED LABEL 15S

TNT GUNNER N208
 TNT MISS SADIE M68
 REMINGTON RED LABEL HR
 JFRS LINDA 42L

Lot 35 HARVIE WELLINGTON 114Z TWIN

HAR 114Z

February 16, 2012

Bw: 79

Adj. Sale Wt: 1342

Homo Polled Red



- Heavy haired and packed full of meat
- Full brothers sell as lots 32, 33, 34

CE	BWT	WWT	YWT	MCE	MWWT	MILK
2.9	4.2	47.7	87.6	4.4	26.8	2.9

SIRE **ERIXON WELLINGTON 133W**
MCINTOSH EDGE 15T
LAZY BAR-B SUSIEQ 6P

SF WHAT A DREAM
BAJM JUST RIGHT 10L
HOOK'S RED QUORUM 55H
LAZY BAR-B MILE 32M

DAM **JFRS MS 50W**
TNT TOP GUN R244
JFRS MS RED LABEL 15S

TNT GUNNER N208
TNT MISS SADIE M68
REMINGTON RED LABEL HR
JFRS LINDA 42L

Lot 36 HARVIE CASH FLOW 94Z

HAR 94Z

February 10, 2012

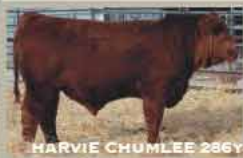
Bw: 108

Adj. Sale Wt: 1497

Homo Polled Red



- Big bodied, lots of muscle, good haired and a different pedigree
- Full brother was our high seller last year to Boynecrest Simmentals, MB
- 2 full sister in herd



HARVIE CHUMLEE 286Y

Full Brother

CE	BWT	WWT	YWT	MCE	MWWT	MILK
3.1	6.7	48.7	77.5	5.3	28.1	3.7

SIRE **ERIXON WELLINGTON 133W**
MCINTOSH EDGE 15T
LAZY BAR-B SUSIEQ 6P

SF WHAT A DREAM
BAJM JUST RIGHT 10L
HOOK'S RED QUORUM 55H
LAZY BAR-B MILE 32M

DAM **TWIN-CHIEF RED NILE 895N**
HF REMINGTON 102E
TWIN-CHIEF HERSHEY 895H

BS.MR ARAPAHOE 811A
MISS DR A108
ER RED DASH 649D
TWIN-CHIEF FRIENDLY 595F

Lot 37 HARVIE WELLINGTON 197Z

HAR 197Z

April 1, 2012

Bw: 108

Adj. Sale Wt: 1325

Polled Red



- A bull that's going to add pounds to your calves in the fall
- Dam was high selling female at Diamond M Ranch Bull and Female Sale
- Sire Wellington is Homo Polled

CE	BWT	WWT	YWT	MCE	MWWT	MILK
3.4	5.0	46.4	83.1	5.0	29.0	5.8

SIRE **ERIXON WELLINGTON 133W**
MCINTOSH EDGE 15T
LAZY BAR-B SUSIEQ 6P

SF WHAT A DREAM
BAJM JUST RIGHT 10L
HOOK'S RED QUORUM 55H
LAZY BAR-B MILE 32M

DAM **DMF MS RIGHT TIME 946W**
DMF WESTERN RED 504R
DMF RED FANCY 347N

BH RIGHT TIME 520E
FTS MISS RAINE 122M
LFE TWAIN 312J
DMF MS RED MJ 79K

Lot 38 HARVIE WELLINGTON 167Z

HAR 167Z

March 8, 2012

Bw: 114

Adj. Sale Wt: 1500

Homo Polled Red

- Blood Red, heavy muscled, easy doing
- Dam is a grand daughter off the Red Licious Cow Family
- Maternal brother sold to Eagle Creek Ranching

CE	BWT	WWT	YWT	MCE	MWWT	MILK
1.1	6.5	46.4	82.1	5.3	24.7	1.5



MCINTOSH EDGE 15T
ERIXON WELLINGTON 133W
 LAZY BAR-B SUSIEQ 6P

SF WHAT A DREAM
 BAJM JUST RIGHT 10L
 HOOK'S RED QUORUM 55H
 LAZY BAR-B MILE 32M

NCB RED DREAM 23T
DAM WTW MS LICIOUS 9003W
 WTW MS LICIOUS 7004T

CNS DREAM ON L186
 BBN BLACK MISTRESS 505R
 WHEATLAND BULL 440P
 WFL MS RED LICIOUS 5085R

Lot 39 HARVIE WELLINGTON 192Z

HAR 192Z

March 28, 2012

Bw: 107

Adj. Sale Wt: 1547

Scurred

- Here is the high performing bull in our 2013 bull sale
- Lots of growth, body, muscle and hair

CE	BWT	WWT	YWT	MCE	MWWT	MILK
3.1	5.3	50.8	88.7	4.8	32.8	7.4



MCINTOSH EDGE 15T
ERIXON WELLINGTON 133W
 LAZY BAR-B SUSIEQ 6P

SF WHAT A DREAM
 BAJM JUST RIGHT 10L
 HOOK'S RED QUORUM 55H
 LAZY BAR-B MILE 32M

BEECH BRO SALSA 3S
DAM VIRGINIA MS POLL URSALA
 VIRGINIA MS POLL SAHARA

SU NACHO 57N
 SSP MYSTERY 19M
 OUTBACK STOCKBULL 7P
 MI MS KIMBERLY 2K

Lot 40 HARVIE WELLINGTON 163Z

HAR 163Z

March 8, 2012

Bw: 109

Adj. Sale Wt: 1429

Homo Polled Hetro Black

- Outcross black pedigree
- Very complete made bull, straight in his lines, lots of spring of rib and big hipped
- 2 daughters retained in the herd

CE	BWT	WWT	YWT	MCE	MWWT	MILK
5.1	3.9	42.5	79.2	4.3	28.7	7.4



MCINTOSH EDGE 15T
ERIXON WELLINGTON 133W
 LAZY BAR-B SUSIEQ 6P

SF WHAT A DREAM
 BAJM JUST RIGHT 10L
 HOOK'S RED QUORUM 55H
 LAZY BAR-B MILE 32M

SKORS RED BULL 79R
DAM MFR BLK RIVERLANE 8181U
 MISS RIVERLANE ACRES 563R

CZAR MR BLACK KNIGHT 74J
 KORS MISS 24M
 STONEY SIDEKICK 13N
 FHRS 16H'S MS CROCUS 3K

Lot 41 HARVIE FREEDOM 131Z

HAR 131Z

February 21, 2012

Bw: 88

Adj. Sale Wt: 1398

Homo Polled Hetro Black



- Calving ease bull that still has lots of performance
- Dam comes from the donor program of Hudson Pine
- Heifer Approved

CE	BWT	WWT	YWT	MCE	MWWT	MILK
7.6	0.6	32.5	67.8	8.8	20.0	3.7

BH TRACKER 998J
SIRE THSF FREEDOM 300N
 SAFN MISS ZING 02H

LRS PREFERRED STOCK 370C
 699F
 SAC JET TOP 2D
 SAC MISS ZING 88E

DAM HPF MS STYLE M055
 WLE POWER STROKE
 ER MBE9A 173C

BURNS BULL X339U
 NICHOLS JOLIETTE C75
 MEYERS BLACK EQUALIZER
 ER MISS JB91X 9A

Lot 42 HARVIE FREEDOM 133Z

HAR 133Z

February 22, 2012

Bw: 79

Ad. Sale Wt: 1362

Homo Polled Hetro Black



- Long patterned calving ease bull.
- Full brother to lot 41
- Dam has 24 registered progeny
- Heifer Approved

CE	BWT	WWT	YWT	MCE	MWWT	MILK
7.6	-1.3	23.9	56.8	8.8	16.6	4.6

BH TRACKER 998J
SIRE THSF FREEDOM 300N
 SAFN MISS ZING 02H

LRS PREFERRED STOCK 370C
 US_1883912 699F
 SAC JET TOP 2D
 SAC MISS ZING 88E

DAM HPF MS STYLE M055
 WLE POWER STROKE
 ER MBE9A 173C

BURNS BULL X339U
 NICHOLS JOLIETTE C75
 MEYERS BLACK EQUALIZER
 ER MISS JB91X 9A

Lot 43 HARVIE RED ACE 5Z

HAR 5Z

January 2, 2012

Bw: 95

Adj Sale Wt: 1467

Polled Red



- Big topped stout hipped with lots of hair
- Dam came from Kopp Simmentals

CE	BWT	WWT	YWT	MCE	MWWT	MILK
6.1	2.2	36.1	59.3	7.8	21.6	3.5

HARVIE TREND SETTER 40Y
 PATERNAL BROTHER SOLD TO RUSSELL SEVEIK, AB

TNT TOP GUN R244
SIRE WHEATLAND RED ACE 747T
 WHEATLAND LADY 902J

TNT GUNNER N208
 TNT MISS SADIE M68
 ER RED DECK 639D
 WHEATLAND LADY 702G

DAM KOP MS WHEATIE 116X
 WHEATLAND BULL 655S
 KOP MS NORTH 52R

REMINGTON RED LABEL HR
 WHEATLAND LADY 902J
 SOUTH SEVEN NORTHERN 29N
 KOP MS FREIGHTLINER 59M

Charolais Herd Sires

PLEASANTDAWN SPAWN 765W

TLJ 765W

January 24, 2009

Homo Polled



National Champion Bull

CE	BW	WW	YW	MILK	TM
46	0.7	37	80	27.2	46

LEK ARNOLD 14J

LECA MUDDY CHAPS 49F

LT RIO BLANCO 1234 P

WCR PRIME CUT 764 PLD

SIRE PLEASANTDAWN MARSHALL70P
PLEASANT DAWN GERI 702J

LEK MS 20/20 109D
PLEASANT DAWN 20/20 709G
PLEASANTDAWNSTEAK 702G

DAM PLEASANT DAWN RIO 65P
PLEASANT DAWN SUZAN 965A

PRAIRIE MAID 4054
PLEASANT DAWN MONTE 1Y
PLEASANT DAWN SUZAN 65W

WINN MANS VINAZA 815U

BKJ 815U

January 12, 2008

Polled



Adds Length, Performance
and Piles of Hair

CE	BW	WW	YW	MILK	TM
63	2.6	54	112	22.1	49

SPARROWS DURANGO 585P
SIRE WINN MANS LANZA 610S
WINN MAN MERIT 036K

ABC LATORO 263G
SPARROWS BLANCHE 585G
MERIT 5133E
MERIT SMOOTHIE 8073H

RMR COHIBA
DAM WINN MAN SEDUCTIVE 052K
BKJ SEDUCTIVE 837H

JBJ SNOWBALL 635F
RIKLIS MAGIC DOLL 428PLD
SLY EASTWOOD PLD 32F
ENCC STINGRAY MAVIS 12Y

Charolais Herd Sires HARVIE STOUT 124X

ELH 124X

March 8, 2010

Homo Polled Leptin TT



Calving Ease Specialist

CE	BW	WW	YW	MILK	TM
86	-0.8	45	85	20.5	43

WINN MANS LANZA 610S
SIRE WINN MANS VINAZA 815U
 WINN MAN SEDUCTIVE 052K

SPARROWS DURANGO 585P
 WINN MAN MERIT 036K
 RMR COHIBA
 BKJ SEDUCTIVE 837H

HARVIE JAGER 65J
DAM HARVIE MS GELLIA 123T
 HARVIE MISS GELLIA 35G

LANG'S ERIC THE RED 3E
 HARVIE MISS FRANCIS 47F
 A-JAY'S PLD DIMENSION 69E
 PAR MISS 50B

HARVIE POUNDER 91X

ELH 91X

February 22, 2010

Polled



2011 High Selling Bull to
 Josh Heitkamp

CE	BW	WW	YW	MILK	TM
14	4.4	56	96	14.2	42

EXCLUSIF
SIRE SILVERSTREAM PERFORMER P38
 SILVERSTREAM HOUGHTY H83E

FMC6078 TILL
 REINETTE
 COAT LEZARD
 BROOKFIELD OCELOT 017

HARVIE JAGER 65J
DAM HARVIE MS NADA 80N
 HARVIE MISS GENEVA 21G

LANG'S ERIC THE RED 3E
 HARVIE MISS FRANCIS 47F
 HARVIE DOMINATION 83D
 JSC LADY COCO 117W

Charolais Herd Sires

ELH 65J

March 23, 1999

HARVIE JAGER 65J

Leptin TT



Most dominate sire
in our program.

CE	BW	WW	YW	MILK	TM
20	4.9	41	74	11.2	32

SIRE **LANG'S ERIC THE RED 3E**
DEER CREEKS ROMEO 5C
CHARLANG DUCHESS 27Z

SVC RIGHT ON 90R
DEER CREEKS CELESTE 5A
LCR ROYAL DUKE A735
CHARLANG LUCKY 21X

DAM **HARVIE MISS FRANCIS 47F**
HARVIE DOMINATION 83D
PAR MISS 13B

ARL MR ACADIA 16A
PAR MISS 45A
P-3 MONTE LAD 8-73X
PAR MISS 21Y

PLEASANT DAWN FIRE 85U

RKJ 85U

April 1, 2008

Homo Polled



Outcross Pedigree
and calving ease

CE	BW	WW	YW	MILK	TM
92	-0.4	27	62	25.9	40

SIRE **PLEASANT DAWN FIRE 176S**
PLEASANT DAWN FIRE 53N
PLEASANT DAWN PRESTO 76P

VDK ROYAL DUKE 3L
PLEASANT DAWN TWENTY 53F
PLEASANT DAWN PRESTO141L
PLEASANT DAWN KAREN 156J

DAM **PLEASANT DAWN STAR 185P**
PLEASANT DAWN SONIC 173M
PLEASANTDAWN ARNETTA 85M

PLEASANT DAWN CHAPS 10H
PLEASANTDAWN TWILLA 73K
LEK ARNOLD 14J
PLEASANTDAWN PRINCESS85E

Charolais Herd Sires

ELH 87Y

February 22, 2011

HARVIE FRONT LINE 87Y

Homo Polled Leptin TT



Harvie Ranching's
New Red herd sire

CE	BW	WW	YW	MILK	TM
81	0.1	27	57	23.0	37

PLEASANT DAWN FIRE 176S
SIRE PLEASANT DAWN FIRE 85U
PLEASANT DAWN STAR 185P

PLEASANT DAWN FIRE 53N
PLEASANT DAWN PRESTO 76P
PLEASANT DAWN SONIC 173M
PLEASANT DAWN ARNETTA 85M

HARVIE JAGER 65J
DAM HARVIE MS GELLIA 123T
HARVIE MISS GELLIA 35G

LANG'S ERIC THE RED 3E
HARVIE MISS FRANCIS 47F
A-JAY'S PLD DIMENSION 69E
PAR MISS 50B

HARVIE SPIT FIRE 255Z

ELH 255Z

January 31, 2012

Bw: 84

Polled



New Herd Sire. Most dominate
mating combination both in
the sale ring and show ring in
Charolais history

THOMAS OAHE WIND 0772ET P
SIRE TR MR FIRE WATER 5792RET
THOMASSWISSERSWEET 17964ET

LT WYOMING WIND 4020 PLD
THOMAS MS CAMELOT 5646
LHD CIGAR E46
THOMAS MS BONANZA 8698

JWK IMPRESSIVE D040 ET
DAM THOMAS MS IMPRESSIVE 0641
BCI MISS VERYLIMIT 6033P

WCR SIR FA MAC 2244
HBR LADY LIZ 721 P
SKYMONT P UNLIMITED 0115
BCR ROSE GIRL 0093

Lot 44 HARVIE SHAKE ME DOWN 98Y

ELH 98Y

February 25, 2011

Adj. Sale Wt: 2060

Homo Polled White



- Huge quarter, big topped, great extension to his front end. Real herd bull presence
- Used in our program last spring, first calves are just hitting the ground now
- Maternal brother sales as lot 68 other brother sold to Andersboda Farms, SK

CE	BW	WW	YW	MILK	TM
66	0.6	44	82	23.1	45

PLEASANTDAWN MARSHALL 70P
 SIRE PLEASANTDAWN SPAWN 765W
 PLEASANT DAWN RIO 65P

LEK ARNOLD 14J
 PLEASANT DAWN GERI 702J
 LT RIO BLANCO 1234 P
 PLEASANT DAWN SUZAN 965A

MAUNGAHINA TOWKAY T13
 DAM HARVIE ANASTASIA 2S
 HFCC ANASTASIA 7L

BULLS M07
 MAUNGAHINA PRINCESS 2 L23
 SPARROWS ALLIANCE 513G
 HFCC ANASTASIA 519E

VOLUME BULL DISCOUNT: A volume discount will be applied to multiple purchases as follows:

- | | |
|--------------|-----------------|
| 3 bulls - 3% | 7 bulls - 7% |
| 4 bulls - 4% | 8 bulls - 8% |
| 5 bulls - 5% | 9 bulls - 9% |
| 6 bulls - 6% | 10+ bulls - 10% |

Lot 45 HARVIE LARIET 172Y

ELH 172Y

April 8, 2011

Bw: 108

Adj. Sale Wt: 2030

Scurred Tanned



MOORE'S LARIAT 136L

Sire **MOORE'S LARIAT 136L**
MVX COUGARHILL HANK 720G
MOORMAID FOCUS 857H

RAINBOW MR CYRANO 32D
MVX EDITH 806X
MISTY CREEK FOCUS 5F
MOORMAID RED BARON 694F

Dam **HARVIE DIAMOND 56P**
HARVIE JAGER 65J
DIAMOND R DREAMY 37L

LANG'S ERIC THE RED 3E
HARVIE MISS FRANCIS 47F
DIAMOND R ICON 12H
AYGR PRIMES DREAM 70D

CE	BW	WW	YW	MILK	TM
46	3.9	41	79	19.0	40

Lot 46 HARVIE LARIET 179Y

ELH 179Y

April 20, 2011

Bw: 106

Adj. Sale Wt: 2146

Polled White



HARVIE PERFORMER 61X

Sire **MOORE'S LARIAT 136L**
MVX COUGARHILL HANK 720G
MOORMAID FOCUS 857H

RAINBOW MR CYRANO 32D
MVX EDITH 806X
MISTY CREEK FOCUS 5F
MOORMAID RED BARON 694F

Dam **HARVIE MS NADRIA 157S**
LKPR CHALLENGER 208M
HARVIE NADRIA 81N

LT WYOMING WIND 4020 PLD
GPA LUSTY LADY 69H
HARVIE JAGER 65J
HARVIE JEWEL 75J

CE	BW	WW	YW	MILK	TM
44	4.1	41	77	20.6	41

Lot 47 HARVIE LARIET 185Y

ELH 185Y

May 10, 2011

Bw: 60

Adj. Sale Wt: 1730

Polled Tanned



- Super calving ease bull with extra age to cover more heifers
- Heifer's first calf, retained maternal sister this year
- Heifer Approved

CE	BW	WW	YW	MILK	TM
79	2.3	39	73	20.7	40

Sire **MOORE'S LARIAT 136L**
MVX COUGARHILL HANK 720G
MOORMAID FOCUS 857H

RAINBOW MR CYRANO 32D
MVX EDITH 806X
MISTY CREEK FOCUS 5F
MOORMAID RED BARON 694F

Dam **HARVIE MS KALLIE 106W**
HARVIE REDEMPTION 36P
HARVIE MS SELINA 17S

LT WYOMING WIND 4020 PLD
HARVIE MS MOLSON 53M
SVY FREEDOM PLD 307N
DBAR MISS KALLIE 17K

Lot 48 HARVIE LARIAT 79Z

ELH 79Z

February 6, 2012

Bw: 100

Adj. Sale Wt: 1428

Polled White

- Long patterned bull, with lots of growth
- 2 maternal sisters in the herd

CE	BW	WW	YW	MILK	TM
53	3.3	39	72	17.4	37

Sire **MOORE'S LARIAT 136L**
 MVX COUGARHILL HANK 720G
 MOORMAID FOCUS 857H

Dam **HARVIE MS GLYNNIS 105T**
 HARVIE JAGER 65J
 HARVIE MISS GLYNIS 31G

RAINBOW MR CYRANO 32D
 MVX EDITH 806X
 MISTY CREEK FOCUS 5F
 MOORMAID RED BARON 694F

LANG'S ERIC THE RED 3E
 HARVIE MISS FRANCIS 47F
 A-JAY'S PLD DIMENSION 69E
 PAR MISS 5A



Lot 49 HARVIE SPAWN 25Z TWIN

ELH 25Z

January 21, 2012

Bw: 88

Adj. Sale Wt: 1314

Polled White



CE	BW	WW	YW	MILK	TM
53	0.6	36	72	19.2	37

Sire **PLEASANTDAWN SPAWN 765W**
 PLEASANTDAWN MARSHALL 70P
 PLEASANT DAWN RIO 65P

LEK ARNOLD 14J
 PLEASANT DAWN GERI 702J
 LT RIO BLANCO 1234 P
 PLEASANT DAWN SUZAN 965A

Dam **HARVIE MS HEIDY 93S**
 HARVIE JAGER 65J
 HARVIE MISS HEIDY 15H

LANG'S ERIC THE RED 3E
 HARVIE MISS FRANCIS 47F
 HARVIE DOMINATION 83D
 HARVIE MISS 76F

- A bull that really catches your eye with his herd bull presence
- One of the heaviest muscled bulls on offer
- 2 sister in herd, 1 brother sold to Rocky Mnt Grazing

Lot 50 HARVIE SPAWN 84Z

ELH 84Z

February 7, 2012

Bw: 84

Adj. Sale Wt: 1338

Polled White



- Long bodied, lots of hair off a top producing cow
- 4 maternal brothers working at Rocky Mnt Grazing(2), Rick Hagel, Woodwind Ranch



HARVIE PERFORMER 51X

CE	BW	WW	YW	MILK	TM
79	-1.9	28	60	26.4	41

Maternal Brother

SIRE PLEASANTDAWN MARSHALL70P
PLEASANTDAWN SPAWN 765W
PLEASANT DAWN RIO 65P

LEK ARNOLD 14J
PLEASANT DAWN GERI 702J
LT RIO BLANCO 1234 P
PLEASANT DAWN SUZAN 965A

DAM LKPR CHALLENGER 208M
HARVIE ACADIA 93R
HARVIE MISS HEIDY 15H

LT WYOMING WIND 4020 PLD
GPA LUSTY LADY 69H
HARVIE DOMINATION 83D
HARVIE MISS 76F

Lot 51 HARVIE SPAWN 95Z

ELH 95Z

February 10, 2012

Bw: 113

Adj. Sale Wt: 1499

Polled White



- Super soggy made, meat machine
- 3 sisters in herd including dam of lot 57

CE	BW	WW	YW	MILK	TM
7	5.4	41	78	19.8	40

SIRE PLEASANTDAWN MARSHALL70P
PLEASANTDAWN SPAWN 765W
PLEASANT DAWN RIO 65P

LEK ARNOLD 14J
PLEASANT DAWN GERI 702J
LT RIO BLANCO 1234 P
PLEASANT DAWN SUZAN 965A

DAM HARVIE NELSON 98N
HARVIE POLLY 38T
HARVIE POLLY 83P

HARVIE JAGER 65J
HARVIE MISS GELLIA 35G
HARVIE JAGER 65J
HARVIE JENNIFER 58J

Lot 52 HARVIE SPAWN 181Z

ELH 181Z

March 21, 2012

Bw: 108

Adj. Sale Wt: 1444

Polled White



- Younger calf that really has a lot of performance
- 3 maternal sisters in the herd

CE	BW	WW	YW	MILK	TM
50	1.3	35	72	23.2	41

SIRE PLEASANTDAWN MARSHALL70P
PLEASANTDAWN SPAWN 765W
PLEASANT DAWN RIO 65P

LEK ARNOLD 14J
PLEASANT DAWN GERI 702J
LT RIO BLANCO 1234 P
PLEASANT DAWN SUZAN 965A

DAM LKPR CHALLENGER 208M
HARVIE PEPPERMINT 29P
HARVIE MISS KORA 65K

LT WYOMING WIND 4020 PLD
GPA LUSTY LADY 69H
HARVIE HORIZON 50H
HARVIE MISS FRAN 18F

Lot 53

HARVIE SPAWN 101Z TWIN

ELH 101Z

February 12, 2012

Bw: 86

Adj. Sale Wt: 1372

Homo Polled Tanned

- Soft made, real complete made Herd Bull prospect
- 2 maternal brothers are currently herd sires at Harvie Ranching Stout and Front Line



Maternal Brothers

CE	BW	WW	YW	MILK	TM
50	1.0	35	71	22.8	41

PLEASANTDAWN MARSHALL70P
SIRE PLEASANTDAWN SPAWN 765W
 PLEASANT DAWN RIO 65P

LEK ARNOLD 14J
 PLEASANT DAWN GERI 702J
 LT RIO BLANCO 1234 P
 PLEASANT DAWN SUZAN 965A

HARVIE JAGER 65J
DAM HARVIE MS GELLIA 123T
 HARVIE MISS GELLIA 35G

LANG'S ERIC THE RED 3E
 HARVIE MISS FRANCIS 47F
 A-JAY'S PLD DIMENSION69E
 PAR MISS 50B

Lot 54 HARVIE SPAWN 155Z

ELH 155Z

March 4, 2012

Bw 94

Adj Sale Wt 1249

Polled White

- Real smooth made bull with great structure
- Full brother was sold to Jim Pulyk last year

CE	BW	WW	YW	MILK	TM
46	1.7	30	65	20.9	36

PLEASANTDAWN MARSHALL70P
SIRE PLEASANTDAWN SPAWN 765W
 PLEASANT DAWN RIO 65P

LEK ARNOLD 14J
 PLEASANT DAWN GERI 702J
 LT RIO BLANCO 1234 P
 PLEASANT DAWN SUZAN 965A

HARVIE JAGER 65J
DAM HARVIE MICA 166U
 HARVIE MICA PAR 73M

LANG'S ERIC THE RED 3E
 HARVIE MISS FRANCIS 47F
 HARVIE JAGUAR 934J
 PAR MISS 17B



Lot 55 HARVIE STOUT 28Z

ELH 28Z

January 23, 2012

Bw: 71

Adj. Sale Wt: 1544

Polled White



- Calving Ease and Performance and he excels at both
- Off a first calf heifer
- **Heifer Approved**

CE	BW	WW	YW	MILK	TM
95	-2.2	42	78	22.2	43

WINN MANS VINAZA 815U
SIRE HARVIE STOUT 124X
 HARVIE MS GELLIA 123T

WINN MANS LANZA 610S
 WINN MAN SEDUCTIVE 052K
 HARVIE JAGER 65J
 HARVIE MISS GELLIA 35G

LLW DOUBLE L HARVIE 123U
DAM HARVIE MS GELLIA 130X
 HARVIE MS RED GELLIA 65S

HARVIE STINGER 2R
 BAR 7 EASY RUMOR 55R
 HARVIE REDEMPTION 36P
 HARVIE MS GELLA 35G 73L

Lot 56 HARVIE STOUT 82Z

ELH 82Z

February 7, 2012

Bw: 91

Adj. Sale Wt. 1416

Polled White



- Calving ease that's still going to add pounds
- Off a first calf heifer

CE	BW	WW	YW	MILK	TM
66	2.0	49	92	20.5	45

WINN MANS VINAZA 815U
SIRE HARVIE STOUT 124X
 HARVIE MS GELLIA 123T

WINN MANS LANZA 610S
 WINN MAN SEDUCTIVE 052K
 HARVIE JAGER 65J
 HARVIE MISS GELLIA 35G

HARVIE UNREAL 39U
DAM HARVIE MS DIAMOND 109X
 HARVIE MS DIAMOND 118U

HARVIE STINGER 2R
 HARVIE MS SELINA 17S
 HARVIE RING MASTER 10S
 HARVIE DIAMOND 56P

Lot 57 HARVIE STOUT 97Z

ELH 97Z

February 10, 2012

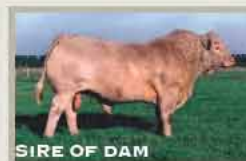
Bw: 95

Adj. Sale Wt: 1453

Polled White



- Moderate, stout and easy doing
- Off a Performer daughter



CE	BW	WW	YW	MILK	TM
46	2.4	50	89	17.1	42

WINN MANS VINAZA 815U
SIRE HARVIE STOUT 124X
 HARVIE MS GELLIA 123T

WINN MANS LANZA 610S
 WINN MAN SEDUCTIVE 052K
 HARVIE JAGER 65J
 HARVIE MISS GELLIA 35G

SILVERSTREAM PERFORMER38
DAM HARVIE MS POLLY 31X
 HARVIE POLLY 38T

EXCLUSIF
 SILVERSTREAM HOUGHTY H83E
 HARVIE NELSON 98N
 HARVIE POLLY 83P

Lot 58 HARVIE STOUT 104Z

ELH 104Z

February 13, 2012

Bw: 77

Adj. Sale Wt: 1184

Polled White

- Super calving ease bull, sleep easy with him in your heifer pen
- **Heifer Approved**

CE	BW	WW	YW	MILK	TM
95	-1.1	33	63	20.3	37



WINN MANS VINAZA 815U
SIRE HARVIE STOUT 124X
 HARVIE MS GELLIA 123T

WINN MANS LANZA 610S
 WINN MAN SEDUCTIVE 052K
 HARVIE JAGER 65J
 HARVIE MISS GELLIA 35G

MNE EXCLUSIVE 17E
DAM HARVIE MS GENEVA 62X
 HARVIE GENEVA 39T

CARLSON'S "ICE" 301C
 MNE WILD ROSE 7W
 SPARROWS ALLIANCE 513G
 HARVIE GENEVA 66R

Lot 59 HARVIE STOUT 125Z

ELH 125Z

February 20, 2012

Bw: 83

Adj. Sale Wt: 1310

Polled White

CE	BW	WW	YW	MILK	TM
75	1.4	46	84	17.1	40

- Calving ease, with an out cross pedigree
- Half full French pedigree
- **Heifer Approved**

WINN MANS VINAZA 815U
SIRE HARVIE STOUT 124X
 HARVIE MS GELLIA 123T

WINN MANS LANZA 610S
 WINN MAN SEDUCTIVE 052K
 HARVIE JAGER 65J
 HARVIE MISS GELLIA 35G

SILVERSTREAM PERFORMERP38
DAM HARVIE MS FRANCE 83X
 MLC MISS 18C JR 4122P

EXCLUSIF
 SILVERSTREAM HOUGHTY H83E
 MLR DRAGON JR 123K
 MLC MISS ECRIN 257M

Lot 60 HARVIE STOUT 184Z

ELH 184Z

March 23, 2012

Bw: 89

Adj. Sale Wt: 1371

Polled Tanned

- Calving ease tanned bull that has almost a 1400lbs yearling wt
- Dam's maternal brother sells as lot 69
- **Heifer Approved**

CE	BW	WW	YW	MILK	TM
66	1.5	43	84	19.4	41



WINN MANS VINAZA 815U
SIRE HARVIE STOUT 124X
 HARVIE MS GELLIA 123T

WINN MANS LANZA 610S
 WINN MAN SEDUCTIVE 052K
 HARVIE JAGER 65J
 HARVIE MISS GELLIA 35G

HARVIE CRYSTAL D TRIGGER 35T
DAM HARVIE PHOEBE 145X
 HARVIE HENRIETTA 58S

MAUNGAHINA TOWKAY T13
 HARVIE MS MOLSON 53M
 MSW CRAVEN RED 29M
 HARVIE PHOEBE 64P

Lot 61 HARVIE VINAZA 165Z

ELH 165Z

March 8, 2012

Bw: 109

Adj. Sale Wt: 1499

Polled White



- Lots of performance, hair and ruggedness
- Maternal brothers sold to Echo Sand Ranch, Rocky Mnt Grazing and Gord Lunde
- Last years 2 high selling bulls were sired by Vinaza

CE	BW	WW	YW	MILK	TM
30	4.1	56	104	20.6	49



HARVIE PERFORMER 94X

Maternal Brother sold to Echo Sand Ranching

WINN MANS LANZA 610S
SIRE WINN MANS VINAZA 815U
 WINN MAN SEDUCTIVE 052K

SPARROWS DURANGO 585P
 WINN MAN MERIT 036K
 RMR COHIBA
 BKJ SEDUCTIVE 837H

LKPR CHALLENGER 208M
DAM HARVIE HOLLY 35R
 HARVIE HOLLY 53H

WYOMING WIND 4020 PLD
 GPA LUSTY LADY 69H
 LANG'S ERIC THE RED 3E
 ARL MISS ACADIA 204B

Lot 62 HARVIE VINAZA 166Z

ELH 166Z

March 8, 2012

Bw: 95

Adj. Sale Wt: 1454

Polled White



- Soft made performance bull
- Maternal brothers sold to Long Grass Grazing and Rocky Mnt Grazing
- 2 sisters in the herd including the dam of lot 64

CE	BW	WW	YW	MILK	TM
49	2.6	50	92	20.2	45

WINN MANS LANZA 610S
SIRE WINN MANS VINAZA 815U
 WINN MAN SEDUCTIVE 052K

SPARROWS DURANGO 585P
 WINN MAN MERIT 036K
 RMR COHIBA
 BKJ SEDUCTIVE 837H

HARVIE NELSON 98N
DAM HARVIE GLYNIS 106R
 HARVIE MISS GLYNIS 31G

HARVIE JAGER 65J
 HARVIE MISS GELLIA 35G
 A-JAY'S PLD DIMENSION69E
 PAR MISS 5A

Lot 63 HARVIE VINAZA 172Z

ELH 172Z

March 13, 2012

Bw: 98

Adj. Sale Wt: 1211

Polled White

- Long bodied growthy made bull
- Maternal brother sold to Double R Farms

CE	BW	WW	YW	MILK	TM
63	2.9	49	96	19.2	44

WINN MANS LANZA 610S
SIRE WINN MANS VINAZA 815U
 WINN MAN SEDUCTIVE 052K

SPARROWS DURANGO 585P
 WINN MAN MERIT 036K
 RMR COHIBA
 BKJ SEDUCTIVE 837H

HARVIE STINGER 2R
DAM HARVIE NAUGHTY 16U
 HARVIE NAUGHTY 56S

MXV COUGARHILL HANK 720G
 HFCC ANASTASIA 7L
 HARVIE JAGER 65J
 BKJ NAUGHTY PLD 932J

Lot 64 HARVIE VINAZA 136Z

ELH 136Z Bw: 83 Polled White
February 23, 2012 Adj. Sale Wt: 1345



- Calving ease bull with some extra performance
- Maternal sister in herd

CE	BW	WW	YW	MILK	TM
77	0.5	47	89	20.2	44

SIRE WINN MANS LANZA 610S
WINN MANS VINAZA 815U
WINN MAN SEDUCTIVE 052K

DAM SILVERSTREAM PERFORMERP38
HARVIE MS WILD FLOWER 36W
HARVIE GLYNIS 106R

SPARROWS DURANGO 585P
WINN MAN MERIT 036K
RMR COHIBA
BKJ SEDUCTIVE 837H
EXCLUSIF
SILVERSTREAM HOUGHTY H83E
HARVIE NELSON 98N
HARVIE MISS GLYNIS 31G

Lot 65 HARVIE REDEMPTION 138Z

ELH 138Z Bw: 96 Polled Tanned
February 23, 2012 Adj. Sale Wt: 1278



- Deep sided soft made bull off the World Champion Bull Redemption

CE	BW	WW	YW	MILK	TM
40	4.1	43	81	16.8	38

SIRE WYOMING WIND 4020 PLD
HARVIE REDEMPTION 36P
HARVIE MS MOLSON 53M

DAM HARVIE JAGER 65J
HARVIE MS ACE 161T
HILLVIEW MS ACE 520E

SCHURRTOP 5627
CHAP'S LADY 2170P
HARVIE JAGER 65J
HARVIE MISS FIREFLY 31F
LANG'S ERIC THE RED 3E
HARVIE MISS FRANCIS 47F
GRANADAS RED ACE 17B
HILLVIEW MISS POLL 5A

Lot 66 HARVIE MARSHALL 44Z

ELH 44Z January 29, 2012 Bw: 89 Adj. Sale Wt: 1319 Homo Polled Red



- Moderate framed, heavy muscled and light birth weight
- Full brother to dam was a high selling bull to Wawedash Farms
- Off a first calf heifer
- Heifer Approved

CE	BW	WW	YW	MILK	TM
46	1.6	38	73	21.3	40



SIRE LEK ARNOLD 14J
PLEASANTDAWN MARSHALL70P
PLEASANT DAWN GERI 702J

MUDDY CHAPS 49F
LEK MS 20/20 109D
PLEASANT DAWN 20/20 709G
PLEASANTDAWNSTEAK 702G

DAM HARVIE CRYSTAL D TRIGGER 35T
HARVIE MS NAD 69X
HARVIE MS NAD 43N

Full Brother to Dam
MAUNGAHINA TOWKAY T13
HARVIE MS MOLSON 53M
HARVIE JAGER 65J
HARVIE MISS FUN 37F

Lot 67 HARVIE POUNDER 42Z

ELH 42Z

January 28, 2012

Bw: 101

Adj. Sale Wt: 1497

Scurred White



- Massive hip, lots of hair, easy doing, I like this bull a lot
- Ian bought this dam out of Manitoba after he fell in love with her out there at a show

CE	BW	WW	YW	MILK	TM
41	4.6	50	90	16.1	41

SILVERSTREAM PERFORMERP38
SINE HARVIE POUNDER 91X
 HARVIE MS NADA 80N

EXCLUSIF
 SILVERSTREAM HOUGHTY H83E
 HARVIE JAGER 65J
 HARVIE MISS GENEVA 21G

SPARROWS SANCHEZ 715T
DAM STEPLERS ASHANTI 69W
 KCH ASHANTI 6R

SPARROWS ALCATRAZ 18N
 SPARROWS DANA 321L
 SPARROWS ALLIANCE 513G
 KCH YOU IMPRESS ME 15N

Lot 68 HARVIE POUNDER 77Z

ELH 77Z

February 6, 2012

Bw: 108

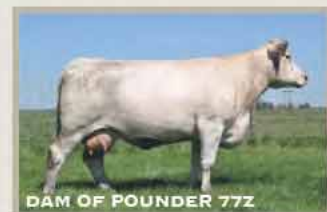
Adj. Sale Wt: 1434

Polled White



- Long made bull that tips down the scale
- Maternal brother is a sale feature lot 44
- Dam is a daughter off the national champion female

CE	BW	WW	YW	MILK	TM
26	4.3	46	82	18.0	41



DAM OF POUNDER 77Z

SILVERSTREAM PERFORMERP38
SINE HARVIE POUNDER 91X
 HARVIE MS NADA 80N

EXCLUSIF
 SILVERSTREAM HOUGHTY H83E
 HARVIE JAGER 65J
 HARVIE MISS GENEVA 21G

MAUNGAHINA TOWKAY T13
DAM HARVIE ANASTASIA 2S
 HFCC ANASTASIA 7L

BULLS M67
 MAUNGAHINA PRINCESS 2 L23
 SPARROWS ALLIANCE 513G
 HFCC ANASTASIA 519E

Lot 69 HARVIE POUNDER 90Z

ELH 90Z

February 10, 2012

Bw: 101

Adj. Sale Wt: 1449

Scurred White

- Performance bull
- Maternal brother sold to John and Dave Mick
- Maternal sister is dam of lot 60

CE	BW	WW	YW	MILK	TM
39	3.8	51	93	15.4	41

SILVERSTREAM PERFORMERP38
SINE HARVIE POUNDER 91X
 HARVIE MS NADA 80N

EXCLUSIF
 SILVERSTREAM HOUGHTY H83E
 HARVIE JAGER 65J
 HARVIE MISS GENEVA 21G

MSW CRAVEN RED 29M
DAM HARVIE HENRIETTA 58S
 HARVIE PHOEBE 64P

KEYS HANDYMAN PLD 255H
 SVS FIREBALL 19F
 HARVIE JAGER 65J
 HARVIE HENRIETTA 52H

Lot 70 HARVIE POUNDER 92Z

ELH 92Z

February 10, 2012

Bw :100

Adj. Sale Wt: 1434

Scurred White

- Deep middled performance bull
- Sire was our high selling bull 2 years ago to Josh Heitkamp, ND

CE	BW	WW	YW	MILK	TM
28	3.5	49	89	16.1	41



SIRE **HARVIE POUNDER 91X**
SILVERSTREAM PERFORMERP38
HARVIE MS NADA 80N

EXCLUSIF
SILVERSTREAM HOUGHTY H83E
HARVIE JAGER 65J
HARVIE MISS GENEVA 21G

DAM **HARVIE MS SUNSET 138W**
HARVIE REDEMPTION 36P
HARVIE MICA PAR 73M

LT WYOMING WIND 4020 PLD
HARVIE MS MOLSON 53M
HARVIE JAGUAR 934J
PAR MISS 17B

Lot 71 HARVIE POUNDER 109Z

ELH 109Z

February 14, 2012

Bw: 96

Adj. Sale Wt: 1514

Scurred Tanned

- Scale tipping performance bull
- Maternal brother sold for \$16,000 last year to White Lake Colony, AB and High Bluff Stock Farms, MB

CE	BW	WW	YW	MILK	TM
46	3.1	52	93	17.3	43



HARVIE RED VINAZA 28Y

Maternal Brother

SIRE **HARVIE POUNDER 91X**
SILVERSTREAM PERFORMERP38
HARVIE MS NADA 80N

EXCLUSIF
SILVERSTREAM HOUGHTY H83E
HARVIE JAGER 65J
HARVIE MISS GENEVA 21G

DAM **HARVIE RED GELLA 64W**
HARVIE HIGH TIMES 2T
HARVIE RED GELLA 108T

HARVIE CRAVEN-A-JAY 9R
SDC HOPE 79R
HARVIE REDEMPTION 36P
HARVIE RED GELLA 139R



Lot 72 HARVIE POUNDER 121Z

ELH 121Z

February 20, 2012

Bw: 100

Adj. Sale Wt: 1454

Polled White

- Soft sided long bodied, performance bull
- Maternal brother sold to RenJay Farms, AB

CE	BW	WW	YW	MILK	TM
27	3.0	49	86	17.2	42



HARVIE INVINCIBLE 73X

Maternal Brother

SIRE **HARVIE POUNDER 91X**
SILVERSTREAM PERFORMERP38
HARVIE MS NADA 80N

EXCLUSIF
SILVERSTREAM HOUGHTY H83E
HARVIE JAGER 65J
HARVIE MISS GENEVA 21G

DAM **HARVIE MS SUNLIGHT 11S**
MAUNGAHINA TOWKAY T13
HARVIE MS MOONLIGHT 38M

BULLS M07
MAUNGAHINA PRINCESS 2 L23
HARVIE JAGER 65J
PAR MISS 20B



Lot 73 HARVIE FIREWATER 134Z

ELH 134Z

February 22, 2012

Bw: 113

Adj. Sale Wt: 1292

Polled White



- Nice and thick bull with lots of hair out of a great cow
- Sired by one of the most popular charolais bulls in North America
- Maternal brothers sold to J & C Ranch, BC and Pleasant Dawn Farms, MB

ESTIMATED EPDS

CE	BW	WW	YW	MILK	TM
-	4.0	49	83	16.2	41

THOMAS OAHE WIND 0772ET P
SIRE TR MR FIRE WATER 5792RET
 THOMASSWISSERSWEET17964ET

LT WYOMING WIND 4020 PLD
 THOMAS MS CAMELOT 5646
 LHD CIGAR E46
 THOMAS MS BONANZA 8698

MXV COUGARHILL HANK 720G
DAM HIGHBLUFF SCHATZI 8S
 HOLMSYDE HOT-ON-TOP 212M

RAINBOW MR CYRANO 32D
 MVX EDITH 806X
 DCR MR TOM TERRIFIC J996
 HOLMSYDE HOT VISION 17K

Lot 74 HARVIE RED CAESAR 87Z

ELH 87Z

February 8, 2012

Bw: 86

Adj. Sale Wt: 1423

Polled Red



- Low birth weight with high performance
- Cross good on many types of cows
- Lots of red charolais' in his pedigree

CE	BW	WW	YW	MILK	TM
86	0.7	55	101	18.2	46

MSW CRAVEN RED 29M
SIRE HARVIE CRAVEN-A-JAY 9R
 HARVIE MS NADA 80N

KEYS HANDYMAN PLD 255H
 SVS FIREBALL 19F
 HARVIE JAGER 65J
 HARVIE MISS GENEVA 21G

WINN MANS VINAZA 815U
DAM HARVIE MS NAD 134X
 HARVIE REAL DEAL 88T

WINN MANS LANZA 610S
 WINN MAN SEDUCTIVE 052K
 HARVIE REDEMPTION 36P
 HARVIE MS NAD 43N

Lot 75 HARVIE FREEDOM 258Z

ELH 258Z

February 2, 2012,

Bw: 112

Adj. Sale Wt: 1452

Polled White



- Great bone, deep rib bull
- Add those extra needed pounds to calves come fall
- Full sister was Reserve World Champion Female in 2006



Full Sister

ESTIMATED EPDS

CE	BW	WW	YW	MILK	TM
-	2.5	40	76	27.7	48

HFCC PLD EVOLUTION 5L
SIRE SVY FREEDOM PLD 307N
 SVY PURRFECT 184L

SPARROWS ALLIANCE 513G
 HFCC ELVIRA 916J
 RA BIG CAT 9017 PLD
 SVY JUSTLIKEPERFECT 432D

HTA WHITEHOT 105A
DAM SFL 105 MISS MONTE 20L
 LOEWEN MS MONTECARLO321C

KJP SKY FIRE 51T
 SPARROWS PRISCILLA 8735W
 THE HHP MONTE CARLO 15T
 MS LOEWEN SULLIVAN 612U

Lot 76 HARVIE JAGER 268Z

ELH 268Z

February 11, 2012

Bw: 116

Adj. Sale Wt: 1369

Polled White

- Easy fleshing, deep ribbed bull
- Full sib to the famous Harvie Miss Moslon 53M who produced Redemption and Trigger
- Full brother sales as lot 77



NATIONAL CHAMPION FEMALE & FULL SISTER TO LOTS 77 & 78

ESTIMATED EPDS

CE	BW	WW	YW	MILK	TM
-	3.5	38	73	14.6	34

LANG'S ERIC THE RED 3E
 SIRE HARVIE JAGER 65J
 HARVIE MISS FRANCIS 47F

DEER CREEKS ROMEO 5C
 CHARLANG DUCHESS 27Z
 HARVIE DOMINATION 83D
 PAR MISS 13B

KJP SKY FIRE 51T
 DAM HARVIE MISS FIREFLY 31F
 PAR MISS CANDY 27X

TOWERVIEW EXCEL 3P
 JOHNSON'S MISS 1M
 ARL MR ACADIA 1152R
 ARL MISS ACADIA 73S

Lot 77 HARVIE JAGER 269Z

ELH 269Z

February 13, 2012

Bw: 108

Adj. Sale Wt: 1542

Polled Red

- Deep sided thick red herdsire prospect
- Performance bull
- He is a full sib to one of the greatest cows we ever produced, Harvie Ms Molson 53M
- Scott's pick to be one of the next great ones



ESTIMATED EPDS

CE	BW	WW	YW	MILK	TM
-	3.5	38	73	14.6	34

LANG'S ERIC THE RED 3E
 SIRE HARVIE JAGER 65J
 HARVIE MISS FRANCIS 47F

DEER CREEKS ROMEO 5C
 CHARLANG DUCHESS 27Z
 HARVIE DOMINATION 83D
 PAR MISS 13B

KJP SKY FIRE 51T
 DAM HARVIE MISS FIREFLY 31F
 PAR MISS CANDY 27X

TOWERVIEW EXCEL 3P
 JOHNSON'S MISS 1M
 ARL MR ACADIA 1152R
 ARL MISS ACADIA 73S

Lot 78 HARVIE JAGER 53Z

ELH 53Z

January 31, 2012

Bw: 95

Adj. Sale Wt: 1356

Polled Red



- Fast growing, deep ribbed bull
- Will add extra color to his calves
- Out of the old Jager bull that has left a reputation for breeding excellent carcass cattle
- Brothers have sold to Ram Cattle Feeders Ab, and Pheasant Dawn Farms MB

CE	BW	WW	YW	MILK	TM
73	2.1	38	67	18.1	37

LANG'S ERIC THE RED 3E
SIRE **HARVIE JAGER 65J**
HARVIE MISS FRANCIS 47F

DEER CREEKS ROMEO 5C
CHARLANG DUCHESS 27Z
HARVIE DOMINATION 83D
PAR MISS 13B

SVY FREEDOM PLD 307N
DAM **HARVIE MS SELINA 17S**
DBAR MISS KALLIE 17K

HFCC PLD EVOLUTION 5L
SVY PURRFECT 184L
PCC LEXUS 840H
KALA'S FROSTY 121H

Lot 79 HARVIE JAGER 132Z

ELH 132Z

February 22, 2012

Bw: 108

Adj. Sale Wt: 1383

Scurred White



- Another thick son of Jager
- Excellent bone structure and great feet
- Add shape and pounds to calves
- Brother sold to Rocky Mountain Grazing

CE	BW	WW	YW	MILK	TM
14	5.7	43	78	15.2	37

LANG'S ERIC THE RED 3E
SIRE **HARVIE JAGER 65J**
HARVIE MISS FRANCIS 47F

DEER CREEKS ROMEO 5C
CHARLANG DUCHESS 27Z
HARVIE DOMINATION 83D
PAR MISS 13B

HTA WHITEHOT 105A
DAM **MXS MAID 252M**
MXS MIKADO'S MAID 32K

KJP SKY FIRE 51T
SPARROWS PRISCILLA 8735W
RPJ MIKADO 707G
MXS SARAH'S MAID 122E

Lot 80 HARVIE JAGER 115Z

ELH 115Z

February 17, 2012

Bw: 107

Adj. Sale Wt: 1220

Polled Red



- Lots of good red meat to this guy
- Dam is a top Redemption daughter
- Maternal brothers sold Glen Regehr, AB and Poplar View Cattle Co. AB

CE	BW	WW	YW	MILK	TM
28	5.2	40	76	15.4	35

HARVIE PERFORMER 55X / MATERNAL BROTHER

LANG'S ERIC THE RED 3E
SIRE **HARVIE JAGER 65J**
HARVIE MISS FRANCIS 47F

DEER CREEKS ROMEO 5C
CHARLANG DUCHESS 27Z
HARVIE DOMINATION 83D
PAR MISS 13B

HARVIE REDEMPTION 36P
DAM **HARVIE KALLIE 57T**
DBAR MISS KALLIE 17K

LT WYOMING WIND 4020 PLD
HARVIE MS MOLSON 53M
PCC LEXUS 840H
KALA'S FROSTY 121H

Lot 81 HARVIE HANK 263Z

ELH 263Z

February 4, 2012

Bw: 110

Adj. Sale Wt: 1385

Polled White

- Stout, long made bull
- His dam 35G has produced many great females and herdsires that have been used in our herd and across the globe
- 263Z is sired by the famous Hank
- Expect quality and performance from his progeny



NELSON

MATERNAL BROTHER

ESTIMATED EPDS

CE	BW	WW	YW	MILK	TM
-	4.4	40	70	24.7	44

SIRE **RAINBOW MR CYRANO 32D**
MX COUGARHILL HANK 720G
 MVX EDITH 806X

CYRANO
 FRIVOLE
 WILDOR RAVEN 6M
 SUNSET ACRES NOREEN 18N

DAM **A-JAY'S PLD DIMENSION69E**
HARVIE MISS GELLIA 35G
 PAR MISS 50B

SPARROWS SHERIFF 315W
 MISS GBR JAVLIN 1W
 PCFL MONTE CARLO 19W
 PAR MISS 4Y



Lot 82 HARVIE FIRE 182Z

ELH 182Z

March 21, 2012

Bw: 82

Adj. Sale Wt: 1324

Polled White



- Low birth weight with lots of performance
- Huge hind quarter
- Great hair coat
- Heifer Approved

CE	BW	WW	YW	MILK	TM
83	0.2	34	67	24.7	42

PLEASANT DAWN FIRE 176S
SIRE PLEASANT DAWN FIRE 85U
 PLEASANT DAWN STAR 185P

PLEASANT DAWN FIRE 53N
 PLEASANT DAWN PRESTO 76P
 PLEASANT DAWN SONIC 173M
 PLEASANTDAWN ARNETTA 85M

HARVIE REDEMPTION 36P
DAM HARVIE MS GELLIA 175W
 HARVIE MISS GELLIA 35G

LT WYOMING WIND 4020 PLD
 HARVIE MS MOLSON 53M
 A-JAY'S PLD DIMENSION 69E
 PAR MISS 50B

Lot 83 HARVIE FIRE 183Z

ELH 183Z

March 22, 2012

Bw: 95

Adj. Sale Wt: 1485

Polled White



- Lots of rib and hind quarter to this guy
- 1485lbs yearling weight!
- Add extra pounds to his calves
- Excellent structure and phenotype

CE	BW	WW	YW	MILK	TM
72	1.6	33	66	24.1	41

PLEASANT DAWN FIRE 176S
SIRE PLEASANT DAWN FIRE 85U
 PLEASANT DAWN STAR 185P

PLEASANT DAWN FIRE 53N
 PLEASANT DAWN PRESTO 76P
 PLEASANT DAWN SONIC 173M
 PLEASANTDAWN ARNETTA 85M

HARVIE CRYSTAL D TRIGGER 35T
DAM HARVIE MS BARBIE DOLL 129W
 HARVIE SHANIA 8R

MAUNGAHINA TOWKAY T13
 HARVIE MS MOLSON 53M
 HARVIE MOJO 115M
 SDC SHANIA 15N

Lot 84 HARVIE FIRE 169Z

ELH 169Z

March 9, 2012

Bw: 98

Adj. Sale Wt: 1181

Polled White

- Another solid Fire son
- Long body and thick

CE	BW	WW	YW	MILK	TM
80	0.2	28	62	22.1	36

PLEASANT DAWN FIRE 176S
SIRE PLEASANT DAWN FIRE 85U
 PLEASANT DAWN STAR 185P

PLEASANT DAWN FIRE 53N
 PLEASANT DAWN PRESTO 76P
 PLEASANT DAWN SONIC 173M
 PLEASANTDAWN ARNETTA 85M

LKPR CHALLENGER 208M
DAM HARVIE PHYLLIS 85P
 HARVIE LAURA 51L

LT WYOMING WIND 4020 PLD
 GPA LUSTY LADY 69H
 HARVIE DOMINATION 83D
 HARVIE HAZEL 75H

Lot 85 WHITECAP LAREDO 232T

HKS 232T

Homo Polled



CE	BW	WW	YW	MILK	TM
91	1.0	45	73	21.9	44

- Offering two exclusive semen packages, each 20 doses
- We purchased Laredo out of the Perrot-Martin dispersal for \$20,000
- Real unique sire whose sons have topped the Perrot-Martin bull sale the past four years

- Laredo is moderate framed with great shape that will provide calving ease and performance
- We are thrilled to have him running in our herd now

SIRE MXS CAVIAR 515R
 SPARROWS ALCATRAZ 18N
 MXS MAUDE UNLIMITED 43B

SPARROWS MATADOR 7K
 SPARROWS BARMAID 218H
 BCR POLLED UNLIMITED 003
 MXS MAUDE 71Z

DAM HKS CUTTING EDGE LADY196P
 WHITECAP CUTTING EDGE97M
 HKS BEAUTIFUL LADY 66K

CHARDEL SABRE 11K
 WHITECAP LADY BEAUTY45F
 WHITECAP SODAK 76E
 WHITECAP LADY HARMONY85F



Polled Hereford



Red & Black Simmental



Charolais



CANADA POSTES
POST CANADA

Postage paid / Port payé
Addressed / Média poste
Admail / avec adresse

1006834