

HARVIE RANCHING

5th Annual Bull Sale

Monday, March 10, 2014 @ 1:00 pm
at the Ranch, Olds, AB

H
T
T
P



Herdtrax
Online Animal Tracking Solutions

SUPERIOR
Livestock Auction

HARVIE RANCHING'S 5TH ANNUAL BULL SALE

Hello fellow Cattle Breeders,

Welcome to the 5th Annual Harvie Ranching Bull Sale. Once again, we would like to extend a big thank you to all our buyers, bidders and friends for your support over the years. It is with your continued support that drives us to focus on breeding top quality bulls for our customers. This past year has been filled with excitement as Scott & Kerrie welcomed their baby boy Chick Bennett into our family and we look forward to Cole & Jill's upcoming arrival in June.

In today's fast paced beef market, optimism drives producers to innovate and improve genetics to maximize profits. The type of bulls that return profits produce a healthy, consistent calf crop that yields pounds at marketing. Successful bull buying is achieved by selecting strong bulls from reputable breeders. Ours bulls are backed by the Harvie Ranching brand which is measured by a 37 year breeding plan built around functional and profitable cattle. Harvie Ranching has partnered with HERDTRAX, a program that gathers performance and carcass data on every individual animal identification number that we raise. With the Herdtrax partnership, we will have the opportunity to purchase Harvie Ranching sired calves from interested customers next fall, which allows for further tracking of sire performance and continuous building of synergy with our valued customers.

This year, Harvie Ranching has approximately 90 bulls on offer including Charolais, Polled Hereford and Simmentals. We continue to focus on using artificial insemination and embryo transplant to incorporate outcrossed genetics into our herd from around the world. Consistency can be seen with many of these bulls being full, three quarter and half-brothers. Harvie Ranching offers one of the best VOLUME DISCOUNTS in the business, which makes it the best place to do all your bull shopping!

Once again our sale will take place on our Ranch. New this year, you can view a video clip of each bull on the Harvie Ranching website, www.harvieranching.com or our internet provider Superior Livestock. If you are unable to be with us on sale day, internet viewing and bidding will be available through their website. For more information please visit www.superiorlivestock.com.

If you have any questions on the bulls offered, please give us a call as we'd be happy to answer any of your questions or if you're in the area feel free to stop in prior to the sale and have a walk through the bulls.

Please join us for lunch prior to the sale for Scott's smoked beef and the warm hospitality from the Harvie Ranching crew.

Sincerely

The Harvie Family



Cole, Jill & Tinley

Cole & Jill Harvie
Cole: 403-994-1314
Jill: 403- 771- 3502



Scott, Kerrie & Chick

Scott & Kerrie Harvie
403-586-4278



Ian & Marlene

Ian & Marlene Harvie
Home: 403-335-4180
Cell: 403-507-3886

WEBSITE: WWW.HARVIERANCHING.COM EMAIL: HARVIE@HARVIERANCHING.COM
RR#2 OLDS, AB T4H 1P3

IMPORTANT SALE INFORMATION

TIME AND PLACE

1 p.m. MST, Monday, March 10, 2014 at Harvie Ranching

and broadcasted live at Superior Livestock Auction www.superiorlivestock.com

Lunch will be provided before the sale, as well as some warm hospitality.

FROM OLDS: 6 miles south on Hwy 2A. Turn west (right) on Bergen Road (Olds-Didsbury Airport) for 9 miles to Range Road 3.1 and turn south (left). Continue for 1/2 mile, sale barn is on the west (right).

HOTEL ACCOMMODATIONS IN OLDS: Best Western Motel 403-556-5900 • Ramada Hotel 403-507-8349 • Pomeroy Inn 403-556-8815

AIRPORTS: Calgary International Airport - Harvie Ranching is located just 45 mins. drive north of Calgary International Airport.

EPDS: Please note that EPDs may change from the time the catalogue is printed and registration papers are transferred. EPDs are not comparable between breeds.

BREED AVERAGES

	CE	BW	WW	YW	MILK	TMAT
Charolais	56.2	1.9	41.0	78.3	20.6	41.1
	CE	BW	WW	YW	MILK	MWWT
Simmentals	5.8	3.9	65.9	93.2	25.3	58.2
	CE	BW	WW	YW	MILK	TM
Hereford	0.9	3.4	47.0	76.0	20.0	43.0

SALE STAFF:

Auctioneer: Ryan Dorran 403-507-6483
Ring Service: Rod McLeod 403-540-7986
Sales Consultants: Rob Bergevin 403-625-7171
Bohrson Marketing Services - Scott Bohrson - 403-370-3010
Daryl Snider - 780-385-5561
American Hereford Association - Joe Rickabaugh 785-633-3188
Canadian Hereford Digest - Brad Dubeau 403-275-2662
Steve Wolff - North Dakota 701-710-1574
Superior Livestock Auction - John Andras 406-670-5074



SALE DAY PHONES:

Ian Harvie 403-507-3886
Cole Harvie 403-994-1314
Scott Harvie 403-586-4278
★ **Jill Harvie** 403-771-3502
Will Harvie 403-994-3825

SIGHT UNSEEN PURCHASES: 100% satisfaction is guaranteed when using this program. If the animal is not as described to you on purchase, you don't own him - no questions asked!

HARVIE RANCHING BULL WARRANTY: Harvie Ranching guarantees to sell you a bull that has passed a semen test performed by a licensed veterinarian. Should a Harvie Ranching bull fail to be a satisfactory breeder that is unable to physically breed a cow or heifer, a credit will be given towards the purchase of another bull. Should you have a problem, we have spare bulls available. We guarantee to provide you with a sound breeding bull, but will not provide replacement or credit for physical injury or mismanagement. Bearing this in mind, we strongly advise you to insure your bull. All problems must be reported to Harvie Ranching in writing. The bull must be returned to Harvie Ranching immediately when the problem is detected, at the buyer's expense. Harvie Ranching will have the bull examined by a veterinarian, and will have 60 days to prove the bull a breeder. If the bull does not prove to be a breeder, the buyer will be entitled to a complete refund of the purchase price of the bull in question. Should the bull prove to be a breeder, he will be returned to the buyer at Harvie Ranching's expense, and the matter will be considered closed. In the case of losses, Harvie Ranching will only be responsible for the original purchase price of the animal. We assume no liability, legal or otherwise, to make any compensation to the buyer.

Harvie Ranching reserves the right to in-herd semen use on any bull sold in the sale, with semen drawn at Harvie Ranching's expense, and the buyer's convenience.

TERMS AND CONDITIONS:

TERMS: The terms of the sale are cash or cheque, payable at par at the sales location, unless satisfactory credit or invoicing arrangements have been made prior to the sale. The right of property shall not pass until settlement has been made.

DELIVERY: Harvie Ranching will deliver up to 150 miles for free, further distances will be charged at cost. Bulls may be kept at Harvie Ranching until April 1, 2014 at no charge, after that time, bulls will be kept for \$3/day. Buyers who pick up their bull within a week of sale day will receive a \$50 discount/bull.

USA DELIVERY: All bulls sold to the USA will be charged an additional \$250.00/bull and Harvie Ranching will deliver to an agreed upon central location in Montana or North Dakota.

INSURANCE: Will be available sale day through DJ Henderson & Associates (403-782-3888). We recommend that all bulls left at Harvie Ranching be insured.

VOLUME BULL DISCOUNT: A volume discount will be applied to multiple purchases as follows:

3 bulls - 3%, 4 bulls - 4%, 5 bulls - 5%, 6 bulls - 6%, 7 bulls - 7%, 8 bulls - 8%, 9 bulls - 9%, 10+ bulls - 10%

ANNOUNCEMENTS: Announcements from the auctioneer will take precedence over any material printed in this catalogue.

REGISTRATION & TRANSFER: A registration certificate of the animal will be duly transferred to the purchaser.

LIABILITY: The owners, their employees, sale staff, and representatives accept no liability for accidents that may occur. Persons who attend do so at their own risk.

Produced by The Canadian Hereford Digest ~ *The Canadian Hereford Association is pleased to present this catalogue on behalf of Harvie Ranching.*

CJC CAESAR Z1000

Charolais Herd Sires

Z1000

March 16, 2012

Scurred



AMERICAN EPDS

CE	BW	WW	YW	MILK	MTNL
6.2	0.7	25	51	7	20

SIRE: CJC TRADEMARK H45
CJC CAESAR U224
 LHD MS CIGAR M1703

LHD ALI MARK T214
 CJC MS PERFECT F57
 LHD CIGAR E46
 LHD FERNANDO MARK C502

DAM: CJC COMMODORE N531 ET
CJC MS COMMODORE T3053
 CJC MS SUPREME G603

CJC TRADEMARK H45
 CJC MS CIGAR G362 (*)
 LHD SUPREME ALI C358
 CJC PERFECT IMAGE W543

WHITECAP LAREDO 232T

HKS 232T

March 23, 2007

Homo Polled



CE	BW	WW	YW	MILK	TMAT
80	1.5	44	75	27.0	49

SIRE: SPARROWS ALCATRAZ 18N
MXS CAVIAR 515R
 MXS MAUDE UNLIMITED 43B

SPARROWS MATADOR 7K
 SPARROWS BARMAID 218H
 BCR POLLED UNLIMITED 003
 MXS MAUDE 71Z

DAM: WHITECAP CUTTING EDGE 97M
HKS CUTTING EDGE LADY 196P
 HKS BEAUTIFUL LADY 66K

CHARDEL SABRE 11K
 WHITECAP LADY BEAUTY 45F
 WHITECAP SODAK 76E
 WHITECAP LADY HARMONY 85F

HARVIE FRONT LINE 87Y

ELH 87Y

February 22, 2011

Homo Polled Leptin TT



CE	BW	WW	YW	MILK	TMAT
84	0.5	31	65	21.1	37

SIRE: PLEASANT DAWN FIRE 176S
PLEASANT DAWN FIRE 85U
 PLEASANT DAWN STAR 185P

PLEASANT DAWN FIRE 53N
 PLEASANT DAWN PRESTO 76P
 PLEASANT DAWN SONIC 173M
 PLEASANTDAWN ARNETTA 85M

DAM: HARVIE JAGER 65J
HARVIE MS GELLIA 123T
 HARVIE MISS GELLIA 35G

LANG'S ERIC THE RED 3E
 HARVIE MISS FRANCIS 47F
 A-JAY'S PLD DIMENSION 69E
 PAR MISS 50B

Charolais Herd Sires

HARVIE STOUT 124X

ELH 124X

March 8, 2010

Homo Polled
Leptin TT

CE	BW	WW	YW	MILK	TMAT
95	-1.9	44	86	22.1	44

SIRE: WINN MANS LANZA 610S
WINN MANS VINAZA 815U
WINN MAN SEDUCTIVE 052K

DAM: HARVIE JAGER 65J
HARVIE MS GELLIA 123T
HARVIE MISS GELLIA 35G

SPARROWS DURANGO 585P
WINN MAN MERIT 036K
RMR COHIBA
BKJ SEDUCTIVE 837H
LANG'S ERIC THE RED 3E
HARVIE MISS FRANCIS 47F
A-JAY'S PLD DIMENSION69E
PAR MISS 50B



HARVIE EXPRESS 21X

ELH 21X

February 2, 2012

Polled Leptin TT

CE	BW	WW	YW	MILK	TMAT
39	3.5	54	94	19.5	47

SIRE: EXCLUSIF
SILVERSTREAM PERFORMERP38
SILVERSTREAM HOUGHTY H83E

DAM: HARVIE MOJO 115M
HARVIE SHANIA 8R
SDC SHANIA 15N

TILL
REINETTE
COAT LEZARD
BROOKFIELD OCELOT 017

HARVIE JAGER 65J
HARVIE MISS GELLIA 35G
HFCC PLD EVOLUTION 5L
RKG BARBIE DOLL 125K



HARVIE HIGH TIMES 2T

ELH 2T

January 12, 2007

Polled

CE	BW	WW	YW	MILK	TMAT
94	1.2	54	100	23.7	51

SIRE: MSW CRAVEN RED 29M
HARVIE CRAVEN-A-JAY 9R
HARVIE MS NADA 80N

DAM: SVY FREEDOM PLD 307N
SDC HOPE 79R
RKG BARBIE DOLL 125K

KEYS HANDYMAN PLD 255H
SVS FIREBALL 19F
HARVIE JAGER 65J
HARVIE MISS GENEVA 21G

HFCC PLD EVOLUTION 5L
SVY PURRFECT 184L
LLW DOUBLE TAKE PLD 104H
RKG ACE'S LACE RED 67E



SILVERSTREAM PERFORMERP38

083990038F

August 31, 1999

Horned

CE	BW	WW	YW	MILK	TMAT
15	4.2	63	112	16.2	48

SIRE: TILL
EXCLUSIF
REINETTE

DAM: COAT LEZARD
SILVERSTREAM HOUGHTY H83E
BROOKFIELD OCELOT 017

PRINCE
POLONAISE
LURON
INDIENNE

GEAI
HOTESSE
BROOKFIELD LORDSHIP
CHERKLEY MARTINE



Lot 1 HARVIE NEW ERA 84A

ELH 84A

February 8, 2013

BW: 94

Sept. 29 WW: 1000

WPDA: 4.29

Polled



- Powerfully constructed with shape and pattern.
- One of the highest performing bulls on offer
- Dam is a heavy milking Challenger daughter

CE	BW	WW	YW	MILK	TMAT
85	0.6	42	81	21.6	43

SIRE: HARVIE CRAVEN-A-JAY 9R
HARVIE HIGH TIMES 2T
 SDC HOPE 79R

MSW CRAVEN RED 29M
 HARVIE MS NADA 80N
 SVY FREEDOM PLD 307N
 RKG BARBIE DOLL 125K

DAM: LKPR CHALLENGER 208M
HARVIE PEPPERMINT 29P
 HARVIE MISS KORA 65K

LT WYOMING WIND 4020 PLD
 GPA LUSTY LADY 69H
 HARVIE HORIZON 50H
 HARVIE MISS FRAN 18F

Lot 2 HARVIE ROLLER 42A

ELH 42A

February 1, 2013

BW: 80

Sept. 29 WW: 842

WPDA: 3.51

Polled Twin



- Big hipped, long bodied bull
- Maternal brother was the high selling bull last year sold to Rambur Charolais, MT

CE	BW	WW	YW	MILK	TMAT
86	1.3	47	84	22.0	45



HARVIE ANASTASIA 2S

Dam of ELH 42A

SIRE: HARVIE CRAVEN-A-JAY 9R
HARVIE HIGH TIMES 2T
 SDC HOPE 79R

MSW CRAVEN RED 29M
 HARVIE MS NADA 80N
 SVY FREEDOM PLD 307N
 RKG BARBIE DOLL 125K

DAM: MAUNGAHINA TOWKAY T13
HARVIE ANASTASIA 2S
 HFCC ANASTASIA 7L

BULLS M07
 MAUNGAHINA PRINCESS 2 L23
 SPARROWS ALLIANCE 513G
 HFCC ANASTASIA 519E

Lot 3

ELH 130A

February 17, 2013

BW: 103

HARVIE HIGH TIMES 130A

Sept. 29 WW: 890

WPDA: 3.97

Scurred

- Very complete made bull that's easy doing
- Maternal brother sold to Bar EV Land & Cattle
- 3 sisters remain in our herd

CE	BW	WW	YW	MILK	TMAT
62	3.1	46	84	20.1	43

SIRE: **HARVIE HIGH TIMES 2T**
HARVIE CRAVEN-A-JAY 9R
SDC HOPE 79R

MSW CRAVEN RED 29M
HARVIE MS NADA 80N
SVY FREEDOM PLD 307N
KRG BARBIE DOLL 125K



DAM: **HARVIE MS GLYNIS 74S**
HARVIE JAGER 65J
HARVIE MISS GLYNIS 31G

LANG'S ERIC THE RED 3E
HARVIE MISS FRANCIS 47F
A-JAY'S PLD DIMENSION 69E
PAR MISS 5A

Lot 4

ELH 4A

January 22, 2013

BW: 108

HARVIE ULTIMATE 4A

Sept. 29 WW: 981

WPDA: 3.92

Horned

- Performance bull
- Bought his dam from the Perrot/Martin Dispersal Sale
- Dam is a 10 year old cow and still going strong

CE	BW	WW	YW	MILK	TMAT
55	4.0	56	105	15.6	44

SIRE: **KCM ULTIMATE 144Y**
HTA SENATOR 8130U
KCM ECSTATIC 312N

MERIT 5323R
HTA BRIDGET 438P
SPARROWS ALLIANCE 513G
KCM ECSTATIC 128L



DAM: **RPJ NORTHERN ROSE 488P**
S\$ MONTANA SILVER
GPA NORTHERN ROSE 220M

\$ CECILE COBB
\$ STAGE'S MISS DC BAR
LT WYOMING WIND 4020 PLD
EVC NORTHERN ROSE 58G

Lot 5

ELH 17A

January 21, 2013

BW: 108

HARVIE TIMEOUT 17A

Sept. 29 WW: 931

WPDA: 3.71

Horned

- Built like a tank
- Dam is a powerful no miss 11 year old cow

CE	BW	WW	YW	MILK	MWWT
-	3.8	45	83	19.9	42

PEDIGREE ESTIMATE

SIRE: **VFF TIME OUT 172Y**
SDC TIME OUT 88T
KMAC PERFECT TEENA 6T

MXS VERMILLION 527R
SVY HIP HOP 228M
LHD MR PERFECT Y416
KMAC WILMA 48L



DAM: **KCM TATANIA 313N**
SPARROWS ALLIANCE 513G
KCM TATUM 177L

LT WYOMING WIND 4020 PLD
CHARDEL PARADISE 513E
RPJ CANNON 705G
MAY-ON'S ZAPPER 2C

Lot 6 HARVIE EXTRA 5A

ELH 5A

January 22, 2013

BW: 109

Sept. 29 WW: 941

WPDA: 3.76

Scurred



- Light tanned powerful bull
- Dam is off our dependable Barbie Doll cow family

CE	BW	WW	YW	MILK	TMAT
14	6.7	55	99	15.6	43

SIRE: **HBSF EXTRA 2X**
SILVERSTREAM PERFORMERP38
HIGHBLUFF SCHATZI 8S

EXCLUSIF
SILVERSTREAM HOUGHTY H83E
MVX COUGARHILL HANK 720G
HOLMSYDE HOT-ON-TOP 212M

DAM: **HARVIE SHANIA 116T**
HARVIE JAGER 65J
SDC SHANIA 15N

LANG'S ERIC THE RED 3E
HARVIE MISS FRANCIS 47F
HFCC PLD EVOLUTION 5L
RKG BARBIE DOLL 125K

Lot 7 HARVIE BADGER 21A

ELH 21A

January 29, 2013

BW: 105

Sept. 29 WW: 1043

WPDA: 4.29

Polled



- The stoutest calf we have ever raised
- Herd Bull in the making
- 2 maternal sisters in the herd
- Retaining the right to collect in-herd semen

CE	BW	WW	YW	MILK	TMAT
15	5.7	58	102	15.2	44

SIRE: **HBSF EXTRA 2X**
SILVERSTREAM PERFORMERP38
HIGHBLUFF SCHATZI 8S

EXCLUSIF
SILVERSTREAM HOUGHTY H83E
MVX COUGARHILL HANK 720G
HOLMSYDE HOT-ON-TOP 212M

DAM: **HARVIE ELAINE 84U**
HARVIE JAGER 65J
HARVIE ELAINE 137R

LANG'S ERIC THE RED 3E
HARVIE MISS FRANCIS 47F
LKPR CHALLENGER 208M
HARVIE MISS ELAINE 15E

Lot 8 HARVIE EXTRA 36A

ELH 36A

February 1, 2013

BW: 112

Sept. 29 WW: 934

WPDA: 3.89

Polled

- Performance bull
- Maternal brother was a high seller to Rambler Charolais MT
- Dam is a beautiful High Times 2T daughter

CE	BW	WW	YW	MILK	TMAT
19	6.3	61	109	16.2	47

SIRE: **HBSF EXTRA 2X**
SILVERSTREAM PERFORMERP38
HIGHBLUFF SCHATZI 8S

EXCLUSIF
SILVERSTREAM HOUGHTY H83E
MVX COUGARHILL HANK 720G
HOLMSYDE HOT-ON-TOP 212M

DAM: **HARVIE WENDY 34W**
HARVIE HIGH TIMES 2T
HARVIE REAL DEAL 88T

HARVIE CRAVEN-A-JAY 9R
SDC HOPE 79R
HARVIE REDEMPTION 36P
HARVIE MS NAD 43N

Lot 9

ELH 59A

February 4, 2013

BW: 103

Sept. 29 WW: 902

WPDA: 3.81

Polled

- High performing growth bull
- 2 maternal brothers sold to Rocky Mountain Grazing

CE	BW	WW	YW	MILK	TMAT
21	5.0	54	99	16.8	44

SIRE: **HBSF EXTRA 2X**
SILVERSTREAM PERFORMERP38
HIGHBLUFF SCHATZI 8S

EXCLUSIF
SILVERSTREAM HOUGHTY H83E
MVX COUGARHILL HANK 720G
HOLMSYDE HOT-ON-TOP 212M

DAM: **HARVIE PAULA 53P**
HARVIE JAGER 65J
HARVIE HAZEL 75H

LANG'S ERIC THE RED 3E
HARVIE MISS FRANCIS 47F
MNE EXCLUSIVE 17E
HARVIE MISS FRAN 18F



Lot 10

ELH 67A

February 5, 2013

BW: 102

Sept. 29 WW: 825

WPDA: 3.50

Polled

- Long patterned growth type of bull
- Dam is a maternal sister to Redemption the World Champion Charolais Bull

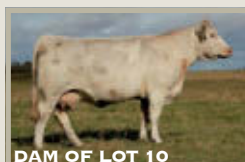
CE	BW	WW	YW	MILK	TMAT
22	5.2	53	98	16.8	43

SIRE: **HBSF EXTRA 2X**
SILVERSTREAM PERFORMERP38
HIGHBLUFF SCHATZI 8S

EXCLUSIF
SILVERSTREAM HOUGHTY H83E
MVX COUGARHILL HANK 720G
HOLMSYDE HOT-ON-TOP 212M

DAM: **HARVIE MS MOLSON ET 303U**
MOORE'S LARIAT 136L
HARVIE MS MOLSON 53M

MVX COUGARHILL HANK 720G
MOORMAID FOCUS 857H
HARVIE JAGER 65J
HARVIE MISS FIREFLY 31F



Lot 11

ELH 99A

February 11, 2013

BW: 112

Sept. 29 WW: 808

WPDA: 3.51

Polled

- Tanned coloured bull with lots of middle and hair
- Maternal brothers working at Anchor J Charolais and Larry Bells

CE	BW	WW	YW	MILK	TMAT
11	5.7	50	91	15.5	41

SIRE: **HBSF EXTRA 2X**
SILVERSTREAM PERFORMERP38
HIGHBLUFF SCHATZI 8S

EXCLUSIF
SILVERSTREAM HOUGHTY H83E
MVX COUGARHILL HANK 720G
HOLMSYDE HOT-ON-TOP 212M

DAM: **HARVIE MS NANETTA 50N**
HARVIE JAGUAR 934J
HARVIE HOLLY 53H

HILLVIEW BONANZA 464D
HILLVIEW MS ACE 520E
LANG'S ERIC THE RED 3E
ARL MISS ACADIA 204B



Lot 12 HARVIE EXTRA 107A

ELH 107A

February 13, 2013

BW: 96

Sept. 29 WW: 709

WPDA: 3.11

Polled Twin



- Eye Appeal and a track record
- Easy doing stout made bull
- Maternal brother to our walking herd sire's; Stout 124X and Front Line 87Y

CE	BW	WW	YW	MILK	TMAT
34	4.1	51	93	16.3	42

SIRE: **HBSF EXTRA 2X**
SILVERSTREAM PERFORMERP38
HIGHBLUFF SCHATZI 8S

DAM: **HARVIE MS GELLIA 123T**
HARVIE JAGER 65J
HARVIE MISS GELLIA 35G

EXCLUSIF
SILVERSTREAM HOUGHTY H83E
MVX COUGARHILL HANK 720G
HOLMSYDE HOT-ON-TOP 212M
LANG'S ERIC THE RED 3E
HARVIE MISS FRANCIS 47F
A-JAY'S PLD DIMENSION69E
PAR MISS 50B

Lot 13 HARVIE MARSHALL 221A

ELH 221A

March 21, 2013

BW: 100

Sept. 29 WW: 782

WPDA: 4.07

Polled



- Soft made tanned bull with lots of eye appeal
- Maternal brother to hersires; Redemption 36P and Trigger 35T
- His dam was 2004 National Champion Female

CE	BW	WW	YW	MILK	MWWT
-	3.1	42	83	18.1	39

PEDIGREE ESTIMATE

SIRE: **PLEASANTDAWN MARSHALL70P**
LEK ARNOLD 14J
PLEASANT DAWN GERI 702J

DAM: **HARVIE MS MOLSON 53M**
HARVIE JAGER 65J
HARVIE MISS FIREFLY 31F

LECA MUDDY CHAPS 49F
LEK MS 20/20 109D
PLEASANT DAWN 20/20 709G
PLEASANTDAWNSTEAK 702Z
LANG'S ERIC THE RED 3E
HARVIE MISS FRANCIS 47F
KJP SKY FIRE 51T
PAR MISS CANDY 27X

Lot 14 HARVIE RED SMURF 103A

ELH 103A

February 12, 2013

BW: 97

Sept. 29 WW: 936

WPDA: 4.09

Horned



- Red bull that is as long as freight train
- Maternal brother was sold to Coulee Crest Herefords last year
- Dam is a maternal sister to our walking herdsire Express 21X herd sire

CE	BW	WW	YW	MILK	TMAT
64	1.9	43	78	20.1	42

SIRE: **GERRARD PAPA SMURF 17F**
WILLOWVALE PROJECTOR 90C
GERRARD SMURFETTE 8A

DAM: **HARVIE MS BARBIE DOLL129W**
HARVIE CRYSTAL D TRIGGER 35T
HARVIE SHANIA 8R

FVC TANGO 907Y
WILLOWVALE LADY MIST 82U
WMG BEN JOHNSON 13X
DTG WHITE GOLD SMURF 8U
MAUNGAHINA TOWKAY T13
HARVIE MS MOLSON 53M
HARVIE MOJO 115M
SDC SHANIA 15N

Lot 15

HARVIE VINAZA 9A

ELH 9A

January 26, 2013

BW: 92

Sept. 29 WW: 823

WPDA: 3.35

Scurred



- Functional with eye appeal
- Lots of hair and muscle
- Maternal brother sold to Pulyk's and dam is a moderate framed stout made Jager daughter

CE	BW	WW	YW	MILK	TMAT
72	1.6	42	84	18.1	39

SIRE: WINN MANS LANZA 610S
WINN MANS VINAZA 815U
 WINN MAN SEDUCTIVE 052K

SPARROWS DURANGO 585P
 WINN MAN MERIT 036K
 RMR COHIBA
 BKJ SEDUCTIVE 837H

DAM: HARVIE JAGER 65J
HARVIE MICA 166U
 HARVIE MICA PAR 73M

LANG'S ERIC THE RED 3E
 HARVIE MISS FRANCIS 47F
 HARVIE JAGUAR 934J
 PAR MISS 17B

Lot 16

HARVIE RED CAJUN 30A

ELH 30A

January 31, 2013

BW: 109

Sept. 29 WW: 905

WPDA: 3.76

Polled



- Here's the soggiest made bull we have on offer
- Maternal sister is our top bred heifer
- We are currently flushing 14W
- Retaining in-herd semen use

CE	BW	WW	YW	MILK	TMAT
32	4.5	47	94	20.7	44

SIRE: WINN MANS LANZA 610S
WINN MANS VINAZA 815U
 WINN MAN SEDUCTIVE 052K

SPARROWS DURANGO 585P
 WINN MAN MERIT 036K
 RMR COHIBA
 BKJ SEDUCTIVE 837H

DAM: HARVIE CRYSTAL D TRIGGER 35T
HARVIE MS NADIE 14W
 HARVIE MS NADIE 85S

MAUNGAHINA TOWKAY T13
 HARVIE MS MOLSON 53M
 HARVIE REDEMPTION 36P
 HARVIE MS NADIE 47N

Lot 17 HARVIE STOUT 7A

ELH 7A

January 24, 2013

BW: 82

Sept. 29 WW: 802

WPDA: 3.23

Polled



- Calving ease bull
- Dam is off our Nada 80N cow family a cow family that has produced us several herd sires

CE	BW	WW	YW	MILK	TMAT
94	-1.8	37	75	21.9	40

WINN MANS VINAZA 815U
SIRE: HARVIE STOUT 124X
 HARVIE MS GELLIA 123T

WINN MANS LANZA 610S
 WINN MAN SEDUCTIVE 052K
 HARVIE JAGER 65J
 HARVIE MISS GELLIA 35G

PLEASANT DAWN FIRE 85U
DAM: HARVIE MS NADA 67Y
 HARVIE MS NADA 80N

PLEASANT DAWN FIRE 176S
 PLEASANT DAWN STAR 185P
 HARVIE JAGER 65J
 HARVIE MISS GENEVA 21G

Lot 18 HARVIE STOUT 10A

ELH 10A

January 27, 2013

BW: 83

Sept. 29 WW: 837

WPDA: 3.42

Polled

- Calving ease bull
- Dam is a hard working first time calver with beautiful udder

CE	BW	WW	YW	MILK	TMAT
91	-0.8	37	74	19.8	38

WINN MANS VINAZA 815U
SIRE: HARVIE STOUT 124X
 HARVIE MS GELLIA 123T

WINN MANS LANZA 610S
 WINN MAN SEDUCTIVE 052K
 HARVIE JAGER 65J
 HARVIE MISS GELLIA 35G

MOORE'S LARIAT 136L
DAM: HARVIE PHYLLIS 161Y
 HARVIE PHYLLIS 85P

MVX COUGARHILL HANK 720G
 MOORMAID FOCUS 857H
 LKPR CHALLENGER 208M
 HARVIE LAURA 51L

Lot 19 HARVIE STOUT 24A

ELH 24A

January 30, 2013

BW: 85

Sept. 29 WW: 784

WPDA: 3.24

Polled



- Calving ease bull
- Stout 124X is our go to herd sire for calving ease and performance

CE	BW	WW	YW	MILK	TMAT
93	-1.0	44	82	15.2	37

WINN MANS VINAZA 815U
SIRE: HARVIE STOUT 124X
 HARVIE MS GELLIA 123T

WINN MANS LANZA 610S
 WINN MAN SEDUCTIVE 052K
 HARVIE JAGER 65J
 HARVIE MISS GELLIA 35G

SVY AD INVINCIBLE P 748T
DAM: HARVIE PHYLLIS 92X
 HARVIE PHYLLIS 22S

DBAR SURVIVOR 220M
 PLEASANT DAWN PAM 214J
 HARVIE REDEMPTION 36P
 HARVIE PHYLLIS 85P

Lot 20

ELH 32A

January 31, 2013

BW: 83

Sept. 29 WW: 761

WPDA: 3.16

Polled

- Calving ease bull
- Moderate framed with lots of hair

CE	BW	WW	YW	MILK	TMAT
95	-1.4	40	79	22.1	42

WINN MANS VINAZA 815U
 SIRE: **HARVIE STOUT 124X**
 HARVIE MS GELLIA 123T

WINN MANS LANZA 610S
 WINN MAN SEDUCTIVE 052K
 HARVIE JAGER 65J
 HARVIE MISS GELLIA 35G



HARVIE UNREAL 39U
 DAM: **HARVIE MS NADETTÉ 81X**
 HARVIE MS NADETTÉ 25U

HARVIE STINGER 2R
 HARVIE MS SELINA 17S
 HTA DURMAX 642S
 HARVIE MS NADETTÉ 89N

Lot 21

ELH 57A

February 4, 2013

BW: 95

Sept. 29 WW: 760

WPDA: 3.21

Polled

- Calving ease bull
- Lots of hair and length of body
- Maternal brother to dam sells as lot 30

CE	BW	WW	YW	MILK	TMAT
60	1.7	43	84	18.3	40

WINN MANS VINAZA 815U
 SIRE: **HARVIE STOUT 124X**
 HARVIE MS GELLIA 123T

WINN MANS LANZA 610S
 WINN MAN SEDUCTIVE 052K
 HARVIE JAGER 65J
 HARVIE MISS GELLIA 35G



PLEASANTDAWN MARSHALL70P
 DAM: **HARVIE MS HEIDY 45Y**
 HARVIE MS HEIDY 93S

LEK ARNOLD 14J
 PLEASANT DAWN GERI 702J
 HARVIE JAGER 65J
 HARVIE MISS HEIDY 15H

Lot 22

ELH 100A

February 11, 2013

BW: 82

Sept. 29 WW: 693

WPDA: 3.01

Polled

- Moderate framed calving ease bull with lots of hair
- Dam is a first calf female off of a power house cow

CE	BW	WW	YW	MILK	TMAT
92	-1.0	45	87	21.9	45

WINN MANS VINAZA 815U
 SIRE: **HARVIE STOUT 124X**
 HARVIE MS GELLIA 123T

WINN MANS LANZA 610S
 WINN MAN SEDUCTIVE 052K
 HARVIE JAGER 65J
 HARVIE MISS GELLIA 35G



PLEASANT DAWN FIRE 85U
 DAM: **HARVIE MARI LOU 140Y**
 HARVIE MARY LOU 76T

PLEASANT DAWN FIRE 176S
 PLEASANT DAWN STAR 185P
 HARVIE REDEMPTION 36P
 HFCC MARI LOU 719G

Lot 23 HARVIE FRONTLINE 37A

ELH 37A

February 1, 2013

BW: 95

Sept. 29 WW: 841

WPDA: 3.50

Polled



- Front Line 87Y is our homo polled, leptin TT red herd sire
- Eye appealing, long bodied bull with lots of hair

CE	BW	WW	YW	MILK	MWWT
-	1.8	42	82	22.1	43

PEDIGREE ESTIMATE

SIRE: **HARVIE FRONT LINE 87Y**
 PLEASANT DAWN FIRE 85U
 HARVIE MS GELLIA 123T

PLEASANT DAWN FIRE 176S
 PLEASANT DAWN STAR 185P
 HARVIE JAGER 65J
 HARVIE MISS GELLIA 35G

DAM: **HARVIE MS GELLIA 80Y**
 WINN MANS VINAZA 815U
 HARVIE MS GELLIA 175W

WINN MANS LANZA 610S
 WINN MAN SEDUCTIVE 052K
 HARVIE REDEMPTION 36P
 HARVIE MISS GELLIA 35G

Lot 24 HARVIE FRONTLINE 170A

ELH 170A

February 28, 2013

BW: 101

Sept. 29 WW: 716

WPDA: 3.36

Polled



- Tanned, moderate framed, easy doing
- Dam is a first calver off the Barbie Doll cow family

CE	BW	WW	YW	MILK	MWWT
-	1.3	38	73	22.7	42

PEDIGREE ESTIMATE

SIRE: **HARVIE FRONT LINE 87Y**
 PLEASANT DAWN FIRE 85U
 HARVIE MS GELLIA 123T

PLEASANT DAWN FIRE 176S
 PLEASANT DAWN STAR 185P
 HARVIE JAGER 65J
 HARVIE MISS GELLIA 35G

DAM: **HARVIE BARBIE DOLL 22Y**
 HARVIE HIGH TIMES 2T
 HARVIE SHANIA 8R

HARVIE CRAVEN-A-JAY 9R
 SDC HOPE 79R
 HARVIE MOJO 115M
 SDC SHANIA 15N

Lot 25 HARVIE SHAKE ME DOWN 154A

ELH 154A

February 23, 2013

BW:94

Sept. 29 WW: 793

WPDA: 3.64

Polled



- Eye catching bull with a big hip
- Sired by our 2013 high selling bull to Rambur Charolais
- Maternal sister in herd dam of lot 23

CE	BW	WW	YW	MILK	MWWT
-	1.8	44	82	22.1	44

PEDIGREE ESTIMATE

SIRE: **HARVIE SHAKE ME DOWN 98Y**
 PLEASANTDAWN SPAWN 765W
 HARVIE ANASTASIA 2S

PLEASANTDAWN MARSHALL70P
 PLEASANT DAWN RIO 65P
 MAUNGAHINA TOWKAY T13
 HFCC ANASTASIA 7L

DAM: **HARVIE MS GELLIA 175W**
 HARVIE REDEMPTION 36P
 HARVIE MISS GELLIA 35G

LT WYOMING WIND 4020 PLD
 HARVIE MS MOLSON 53M
 A-JAY'S PLD DIMENSION69E
 PAR MISS 50B

Lot 26 HARVIE SHAKE ME DOWN 178A

ELH 178A

March 1, 2013

BW: 85

Sept. 29 WW: 740

WPDA: 3.49

Polled Twin

- Athletic bull with lots of muscle expression
- 5 maternal brother sold through the bull sale to; Rick Hagel, Rocky Mnt Grazing(2), Woodwind Ranch, Ferme Rolantino, PQ

CE	BW	WW	YW	MILK	MWWT
-	0.5	33	65	20.2	37

PEDIGREE ESTIMATE

SIRE: **HARVIE SHAKE ME DOWN 98Y** PLEASANTDAWN SPAWN 765W PLEASANTDAWN MARSHALL70P LKPR CHALLENGER 208M LT WYOMING WIND 4020 PLD
 HARVIE ANASTASIA 2S PLEASANT DAWN RIO 65P MAUNGAHINA TOWKAY T13 HARVIE ACADIA 93R GPA LUSTY LADY 69H
 HFCC ANASTASIA 7L HARVIE MISS HEIDY 15H HARVIE DOMINATION 83D
 HARVIE MISS 76F



Lot 27

HARVIE PROWLER 16A

ELH 16A

January 6, 2013

BW: 84

Sept. 29 WW: 1020

WPDA: 3.87

Scurred

- Performance and power
- Last year we purchased the pick of KCM Charolais bred heifers and obviously this great young female was a fantastic choice

CE	BW	WW	YW	MILK	MWWT
-	1.7	38	83	29.2	48

PEDIGREE ESTIMATE

SIRE: **KCM PROWLER 2X** HTA SENATOR 8130U MERIT 5323R HTA BRIDGET438P M6 GRID MAKER 104 PET WCR SIR TRADITION 066
 KCM ALEXIS 432P BALDRIDGE FASTTRACK 82P KAYR MISS 16Y VCR MISS MAC IV 317 SPARROWS SANCHEZ 715T
 KCM E-MAIL 146L KAYR MISS 911W KAYR MISS BEDROCK 804M



Lot 28

HARVIE SILVER BULLET 145A

ELH 145A

February 19, 2013

BW: 94

Sept. 29 WW: 804

WPDA: 3.62

Polled

- Long patterned bull with lots of hair
- Dam purchased from Perrot Martin Dispersal sale, she has an ideal udder

CE	BW	WW	YW	MILK	MWWT
-	2.7	41	93	24.6	45

PEDIGREE ESTIMATE

SIRE: **JWX SILVER BULLET 524W** BAR J SILVERADO 14S ROSSO NEW HORIZON 8L MXS ALLEGRO 701T SVY DELIVERANCE PLD 401P
 KMAC MISS MARMALADE 31R BAR J LOLLYPOP 8L SS MONTANA SILVER RPJ CANNON 705G MAY-ON'S ZAPPER 2C
 SOS LADY MARMALADE 47L KCM TATUM 177L



Lot 29 HARVIE EXPRESS 121A

ELH 121A

February 15, 2013

BW: 78

Sept. 29 WW: 771

WPDA: 3.41

Polled Twin



ELH 48Y - HIGH SELLING MATERNAL BROTHER

- Polled white bull
- Maternal brother was the high selling bull 2 years ago to White Lake Colony and High Bluff Stock Farms
- Maternal brother sold in last year's sale to James Barrs

CE	BW	WW	YW	MILK	MWWT
-	2.9	53	98	19.8	46

PEDIGREE ESTIMATE

SIRE: **HARVIE EXPRESS 21X** SILVERSTREAM PERFORMERP38 EXCLUSIF SILVERSTREAM HOUGHTY H83E HARVIE MOJO 115M SDC SHANIA 15N
 DAM: **HARVIE RED GELLA 64W** HARVIE HIGH TIMES 2T HARVIE RED GELLA 108T
 HARVIE CRAVEN-A-JAY 9R
 SDC HOPE 79R
 HARVIE REDEMPTION 36P
 HARVIE RED GELLA 139R

Lot 30 HARVIE EXPRESS 132A

ELH 132A

February 17, 2013

BW: 93

Sept. 29 WW: 796

WPDA: 3.55

Polled



- Solid made bull with lots of testicle development
- Maternal brothers sold Wyatt Farms and Rocky Mountain Grazing
- 2 sisters remain in our herd

CE	BW	WW	YW	MILK	MWWT
-	2.0	45	79	14.9	37

PEDIGREE ESTIMATE

SIRE: **HARVIE EXPRESS 21X** SILVERSTREAM PERFORMERP38 EXCLUSIF SILVERSTREAM HOUGHTY H83E HARVIE MOJO 115M SDC SHANIA 15N
 DAM: **HARVIE MS HEIDY 93S** HARVIE JAGER 65J HARVIE MISS HEIDY 15H
 LANG'S ERIC THE RED 3E
 HARVIE MISS FRANCIS 47F
 HARVIE DOMINATION 83D
 HARVIE MISS 76F

Lot 31 HARVIE EXPRESS 135A

ELH 135A

February 17, 2013

BW: 102

Sept. 29 WW: 790

WPDA: 3.53

Polled



- Tanned bull off a proven cow.
- Maternal brother sold to Double R Farms

CE	BW	WW	YW	MILK	MWWT
-	2.7	41	93	24.6	45

PEDIGREE ESTIMATE

SIRE: **HARVIE EXPRESS 21X** SILVERSTREAM PERFORMERP38 EXCLUSIF SILVERSTREAM HOUGHTY H83E HARVIE MOJO 115M SDC SHANIA 15N
 DAM: **HARVIE MS WHISPER 178W** HARVIE CRYSTAL D TRIGGER 35T HARVIE MS NANINE 27N
 MAUNGAHINA TOWKAY T13
 HARVIE MS MOLSON 53M
 HARVIE JAGUAR 934J
 HARVIE MISS GITA 18G

Lot 32

HARVIE EXPRESS 188A

ELH 188A

March 5, 2013

BW: 83

Sept. 29 WW: 684

WPDA: 3.29

Polled



- Heifer approved tanned bull
- Dam is a cherry red first calver

CE	BW	WW	YW	MILK	MWWT
-	4.1	47	86	18.7	42

PEDIGREE ESTIMATE

SIRE: **HARVIE EXPRESS 21X** SILVERSTREAM PERFORMERP38 HARVIE SHANIA 8R
 EXCLUSIF SILVERSTREAM HOUGHTY H83E HARVIE MOJO 115M SDC SHANIA 15N
 DAM: **HARVIE MS PHOEBE 82Y** MOORE'S LARIAT 136L HARVIE PHOEBE 164T
 MVX COUGARHILL HANK 720G MOORMAID FOCUS 857H HARVIE REDEMPTION 36P HARVIE PHOEBE 64P

Lot 33

HARVIE EXPRESS 199A

ELH 199A

March 9, 2013

BW: 100

Sept. 29 WW: 729

WPDA: 3.57

Polled

CE	BW	WW	YW	MILK	MWWT
-	3.8	51	94	19.3	45

PEDIGREE ESTIMATE

SIRE: **HARVIE EXPRESS 21X** SILVERSTREAM PERFORMERP38 HARVIE SHANIA 8R
 EXCLUSIF SILVERSTREAM HOUGHTY H83E HARVIE MOJO 115M SDC SHANIA 15N
 DAM: **HARVIE MS MARTHA 103Y** WINN MANS VINAZA 815U HARVIE MS MARTHA 162W
 WINN MANS LANZA 610S WINN MAN SEDUCTIVE 052K HARVIE REDEMPTION 36P HARVIE MS MARTHA 5M

- Tanned bull with lots of hair and performance
- Dam is a first calver

Lot 34

HARVIE EXPRESS 211A

ELH 211A

March 15, 2013

BW: 112

Sept. 29 WW: 732

WPDA: 3.70

Scurred



- Long patterned performance bull
- Dam is a really nice uddered Vinaza daughter

CE	BW	WW	YW	MILK	MWWT
-	1.8	46	85	22.0	45

PEDIGREE ESTIMATE

SIRE: **HARVIE EXPRESS 21X** SILVERSTREAM PERFORMERP38 HARVIE SHANIA 8R
 EXCLUSIF SILVERSTREAM HOUGHTY H83E HARVIE MOJO 115M SDC SHANIA 15N
 DAM: **HARVIE ANASTASIA 77X** WINN MANS VINAZA 815U HARVIE ANASTASIA 15T
 WINN MANS LANZA 610S WINN MAN SEDUCTIVE 052K CHARDEL HARVEST 438D HFCC ANASTASIA 7L

Lot 35 HARVIE EXPRESS 205A

ELH 205A

March 12, 2013

Bw: 93

Sept. 29 WW: 721

WPDA: 3.59

Polled

- Athletic designed bull with lots of future
- Dam is an easy doing Redemption daughter

CE	BW	WW	YW	MILK	MWWT
-	2.3	48	83	19.7	44

SIRE: **HARVIE EXPRESS 21X**
SILVERSTREAM PERFORMERP38
HARVIE SHANIA 8R

EXCLUSIF
SILVERSTREAM HOUGHTY H83E
HARVIE MOJO 115M
SDC SHANIA 15N

DAM: **HARVIE MS KALLIE 106W**
HARVIE REDEMPTION 36P
HARVIE MS SELINA 17S

PEDIGREE ESTIMATE
LT WYOMING WIND 4020 PLD
HARVIE MS MOLSON 53M
SVY FREEDOM PLD 307N
DBAR MISS KALLIE 17K

Lot 36 HARVIE SPITFIRE 255Z

ELH 255Z

February 8, 2012

BW: 94

Polled



- Loads of performance and length
- One of the most profitable matings ever between Firewater and 0641
- Numerous high selling full sibs and National Champions

CE	BW	WW	YW	MILK	TMAT
67	1.9	40	76	19.4	39

SIRE: **TR MR FIRE WATER 5792RET**
THOMAS OAHE WIND 0772ET P
THOMASSWISSERSWEET17964ET

LT WYOMING WIND 4020 PLD
THOMAS MS CAMELOT 5646
LHD CIGAR E46
THOMAS MS BONANZA 8698

DAM: **THOMAS MS IMPRESSIVE0641**
JWK IMPRESSIVE D040 ET
BCI MISS VERYLIMIT 6033P

WCR SIR FA MAC 2244
HBR LADY LIZ 721 POLLED
SKYMONT P UNLIMITED 0115
BCR ROSE GIRL 0093

VOLUME BULL DISCOUNT: A volume discount will be applied to multiple purchases as follows:

3 bulls - 3%
4 bulls - 4%
5 bulls - 5%
6 bulls - 6%

7 bulls - 7%
8 bulls - 8%
9 bulls - 9%
10+ bulls - 10%

Simmental Embryos FOR SALE PRIVATELY



WS DAKOTA ROSE M86



HARVIE BOONDOCK 12Z



KWA FLYF RED MOUNTAIN 16Z

3 DAKOTA ROSE X RED MOUNTAIN

4 DAKOTA ROSE X BOONDOCK



BDV JUST CAUSE M204



HARVIE BOONDOCK 12Z



KWA FLYF RED MOUNTAIN 16Z

5 JUST CAUSE X BOONDOCK

5 JUST CAUSE X RED MOUNTAIN

HARVIE JDF WALLBANGER 111X *Simmental Herd Sires*

HAR 111X

January 13, 2010

BW: 98

Homo Polled



CE	BWT	WWT	YWT	MCE	MWWT	MILK
3.6	3.2	84.8	149.6	5.4	61.2	18.8

SIRE: SHS ENTICER P1B
TCF/RCC TEMPTATION GJ640
ROCKY HILLS JO

DAM: JDF PEPSI 61U
REMINGTON ON TARGET 2S
JDF MATTIE 61R

TE MCCLINTOCK G28
BOZ SWEET TEMPTATION
RHR GRANITE 140G
ROCKY HILLS E JAY
REMINGTON RED LABEL HR
DRAKE SOFT TOUCH 15M
GFI MAGNUM K52
ROO KRYSTAL 34K

HARVIE BOONDOCK 12Z

HAR 12Z

January 5, 2012

BW: 105

Homo Polled



CE	BWT	WWT	YWT	MCE	MWWT	MILK
5.2	3.1	57.6	79.2	6.3	50.0	21.2

SIRE: DESTINY BUCKEYE
TH BLACK EDITION 8R
DESTINY MAGNUM TWAIN

DAM: JDF PEPSI 61U
REMINGTON ON TARGET 2S
JDF MATTIE 61R

TNT DYNAMITE BLACK L137
BBN MS BLACK LADY 28H
GFI MAGNUM K52
DESTINY FINE TUNE SHANIA
REMINGTON RED LABEL HR
DRAKE SOFT TOUCH 15M
GFI MAGNUM K52
ROO KRYSTAL 34K

HARVIE LUCKY SEVEN 167Y

HAR 167Y

April 4, 2011

BW: 105

Homo Polled Homo Black



CE	BWT	WWT	YWT	MCE	MWWT	MILK
1.5	4.4	63.3	94.6	2.2	48.1	16.4

SIRE: SPRINGCREEK TANK 63P
MSR KANSAS TANK 235M
NEVAS L93

DAM: JDF PEPSI 61U
REMINGTON ON TARGET 2S
JDF MATTIE 61R

3C FULL FIGURES C288 BLK
MSR 0053K OF 515E ARAP
TNT BLACK SHADOW J30
NEVAS BLACK FOOT H819
REMINGTON RED LABEL HR
DRAKE SOFT TOUCH 15M
GFI MAGNUM K52
ROO KRYSTAL 34K

Simmental Herd Sires **RUST BULL 66Z**

66Z

January 28, 2012

BW: 83

Polled Red



USA EPD

CE	BWT	WWT	YWT	MCE	MWWT	MILK
6.8	3.6	66.5	102.6	12.9	48.0	14.7

SIRE: **WHEATLAND BULL 131L**
NICHOLS BLK DESTINY D12
WHEATLAND LADY 908J

DAM: **TNT MISS SADIE M68**
TNT IMPACT H21
TNT MISS JADEN J318

CIRCLE S LEACHMAN 600U
NICHOLS KELLY 75U
BBS ZIMA D55
WHEATLAND LADY 705G

SRS FORTUNE 500
TNT MISS 600U F86
DX PREFERRED ZIMA
TNT MISS BL JACK E178

R PLUS SLEEP EASY 2395Z

LRPS 2395Z

January 12, 2012

BW: 75

Polled Red



CE	BWT	WWT	YWT	MCE	MWWT	MILK
14.1	2.4	69.2	104.1	10.1	56.8	22.2

SIRE: **MRL RED FORCE 12U**
HOOKS SHEAR FORCE 38K
MRL MISS 824S

DAM: **MISS R PLUS 8266U**
LAZY S BLACK 29N
SOUTHOLDEN MISSRED 2H

NICHOLS BLK DESTINY G151
C&D TRACY
TNT DYNAMITE BLACK L137
MRL MISS 443N
LAZY S BLACK STETSON 129L
BDV BONDIE K41
WHF RED DOC 940E
SOUTH-HOLDENMSALSYS 12F

KOP FINAL DRIVE 33Y

KOP 33Y

January 9, 2011

BW: 90

Homo Polled Red



CE	BWT	WWT	YWT	MCE	MWWT	MILK
6.9	-0.2	57.2	75.7	12.4	53.5	24.9

SIRE: **IPU RED TOUCHDOWN 32S**
WHEATLAND RED TEDDY 457P
IPU RED POCAHONTAS 52N

DAM: **KOP MS LIVEWIRE 40U**
MUIRHEAD LIVE WIRE 95R
KOP MS FREIGHTLINER 59M

WHEATLAND BULL 131L
WHEATLAND LADY 902J
HART RED CHIEF J242
KAPPES JADE J144

KENCO/MF POWERLINE 204L
GFP MISS BEARCLAW 100M
SMITHBILT FREIGHTLINER91J
BAR 5 LADY DI 280D

Lot 37

HARVIE FRONT LINE 115A

HAR 115A

February 13, 2013

BW: 102

Oct. 14 WW: 905

WPDA: 3.72

Polled



- WOW! What a meat machine!
- 2 maternal sisters in herd, one who's bull calf sells as lot 38
- Retain the right to collect in-herd semen
- Will be homo polled tested

CE	BWT	WWT	YWT	MCE	MWWT	MILK
5.7	1.8	63.2	87.2	10.9	57.5	26.4

SIRE: IPU RED TOUCHDOWN 32S
KOP FINAL DRIVE 33Y
KOP MS LIVEWIRE 40U

WHEATLAND RED TEDDY 457P
IPU RED POCAHONTAS 52N
MUIRHEAD LIVE WIRE 95R
KOP MS FREIGHTLINER 59M

DAM: SPRINGCREEK LINER 91P
WINDMILL MS LINER 83W
WINDMILL MS RED 43N

RCC/TCF LINE DRIVE M181
ACS MISS CHUCKWAGON 24M
DMF REDMAN 56K
WINDMILL MS POLLY 138C

Lot 38

HARVIE FINAL DRIVE 176A

HAR 176A

March 1, 2013

BW: 84

Oct. 14 WW: 860

WPDA: 3.79

Polled



- Stout made calving ease bull
- Dams maternal brother is a sale feature Lot 37
- Will be homo polled tested

CE	BWT	WWT	YWT	MCE	MWWT	MILK
6.3	1.4	60.8	88.7	10.7	56.6	26.2

SIRE: IPU RED TOUCHDOWN 32S
KOP FINAL DRIVE 33Y
KOP MS LIVEWIRE 40U

WHEATLAND RED TEDDY 457P
IPU RED POCAHONTAS 52N
MUIRHEAD LIVE WIRE 95R
KOP MS FREIGHTLINER 59M

DAM: ERIXON WELLINGTON 133W
HARVIE MS RED WIND 107Y
WINDMILL MS LINER 83W

MCINTOSH EDGE 15T
LAZY BAR-B SUSIEQ 6P
SPRINGCREEK LINER 91P
WINDMILL MS RED 43N

Lot 39

HAR 49A

February 2, 2013

BW: 83

Oct. 14 WW: 823

WPDA: 3.24

Polled

- Calving Ease Bull
- Dark red with lots of hair
- Dam is a hard working 2 year old from a donor cow family

CE	BWT	WWT	YWT	MCE	MWWT	MILK
7.6	1.1	55.6	72.7	12.5	53.3	25.5

IPU RED TOUCHDOWN 32S
SIRE: **KOP FINAL DRIVE 33Y**
KOP MS LIVEWIRE 40U

WHEATLAND RED TEDDY 457P
IPU RED POCAHONTAS 52N
MUIRHEAD LIVE WIRE 95R
KOP MS FREIGHTLINER 59M



STF DOMINANCE T171
DAM: **HARVIE LARA CROFT 6Y**
REMINGTON LARA CROFT 6U

STF DOMINIQUE R170
MMP KISS THIS 37L
REMINGTON RED LABEL HR
REMINGTON LARA CROFT 13S

Lot 40

HAR 146A

February 20, 2013

BW: 82

Oct. 14 WW: 887

WPDA: 3.76

Polled

- Red Baldy calving ease bull
- Dam is an ET daughter off our Tip Top cow family
- Homo Polled by parentage

CE	BWT	WWT	YWT	MCE	MWWT	MILK
8.4	0.9	55.3	76.0	12.9	53.3	25.6

IPU RED TOUCHDOWN 32S
SIRE: **KOP FINAL DRIVE 33Y**
KOP MS LIVEWIRE 40U

WHEATLAND RED TEDDY 457P
IPU RED POCAHONTAS 52N
MUIRHEAD LIVE WIRE 95R
KOP MS FREIGHTLINER 59M



LCHMN BODYBUILDER 7303F
DAM: **HARVIE MS TIP TOP 305Y**
SULLYS TIP TOP

3C WALLY C240 BLK
LSF MOMENTO D8
WINCHESTER HR P8315
DESTINY POWERLINE DECK

Lot 41

HAR 168A

February 27, 2013

BW: 92

Oct. 14 WW: 807

WPDA: 3.52

Polled

- Stout made lots of hair
- Grandmother is one of our most favorite cows we have ever purchased.

CE	BWT	WWT	YWT	MCE	MWWT	MILK
4.4	3.0	66.4	98.6	9.4	58.7	25.5

IPU RED TOUCHDOWN 32S
SIRE: **KOP FINAL DRIVE 33Y**
KOP MS LIVEWIRE 40U

WHEATLAND RED TEDDY 457P
IPU RED POCAHONTAS 52N
MUIRHEAD LIVE WIRE 95R
KOP MS FREIGHTLINER 59M



ERIXON WELLINGTON 133W
DAM: **HARVIE MS REMARKABLE 183Y**
ASP REMARKABLE 21R

MCINTOSH EDGE 15T
LAZY BAR-B SUSIEQ 6P
LCHMN BODYBUILDER 7303F
BLCC MISS MOLLY 69M

Lot 42 HARVIE TOPGUN 183A

HAR 183A

March 2, 2013

Bw: 88

Oct. 14 WW: 815

WPDA: 3.61

Polled



- Cherry red, eye catching calving ease bull
- Dam comes from Sunny Valley Simmentals donor program
- Maternal brother sold TJ Kubinec Farms, sister in herd

CE	BWT	WWT	YWT	MCE	MWWT	MILK
7.8	2.5	65.9	100.5	10.4	52.7	19.7

TNT TOP GUN R244
SIRE: **HARVIE TOP GUN 309Y**
SULLYS TIP TOP

TNT GUNNER N208
TNT MISS SADIE M68
WINCHESTER HR P8315
DESTINY POWERLINE DECK

RLA REDSTREAM 152S
DAM: **SUNNYVALLEY COVERGIRL 57U**
TSC COVERGIRL 908J

TWIN CHIEF MIDAS 248M
CONRAY ARLA 152K
HCC MAX FACTOR
GW MISS RAMBO 500D

Lot 43 HARVIE TOPGUN 261A

HAR 261A

April 16, 2013

Bw: 91

Oct. 14 WW: 782

WPDA: 4.32

Polled



- Younger bull with lots of performance
- Sire is a Top Gun embryo calf off our Tip Top donor cow

CE	BWT	WWT	YWT	MCE	MWWT	MILK
7.1	4.7	69.6	100.5	8.9	54.0	19.2

TNT TOP GUN R244
SIRE: **HARVIE TOP GUN 309Y**
SULLYS TIP TOP

TNT GUNNER N208
TNT MISS SADIE M68
WINCHESTER HR P8315
DESTINY POWERLINE DECK

LAZY S WHISTLER 523M
DAM: **WINDMILL MS WHISLER 120P**
WINDMILL MS DESTINY48M

3C FULL FIGURES C288 BLK
MS LAZY S RED P 105K
NICHOLS BLK DESTINY D12
WINDMILL MS ROOINIK 3K

Lot 44 HARVIE STARTER 95A

HAR 95A

February 11, 2013

Bw: 108

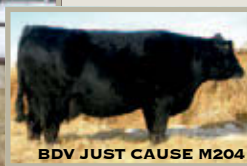
Oct. 14 WW: 963

WPDA: 3.93

Polled



- Lots of performance and length
- Dam is a donor cow
- 3 sisters in herd and a maternal brother sold to Ryglen Holding



BDV JUST CAUSE M204

Dam of lot 44

CE	BWT	WWT	YWT	MCE	MWWT	MILK
4.3	5.7	69	99.8	9.8	66.8	32.3

PEDIGREE ESTIMATE

MUIRHEAD LIVE WIRE 95R
SIRE: **KOP CROSBY 137W**
KOP MS BENGIE 6P

KENCO/MF POWERLINE 204L
GFP MISS BEARCLAW 100M
R PLUS 2169M
KOP MS FREIGHTLINER 34M

TNT AFTERSHOCK G404
DAM: **BDV JUST CAUSE M204**
BDV JENNY J105

BLACK MICK
TNT MISS BUCK X68
CIRCLE S LEACHMAN 600U
B&B MISS LAZER C46

Full Brothers

Lot 45

HARVIE POWERPLAY 236A



HAR 236A

March 29, 2013

Bw: 94

Oct. 14 WW: 820

WPDA: 4.00

- Long as a freight train with a big top
- Maternal brother to Wallbanger and Boondock
- Maternal brother sells as lot 47 and a full brother as lot 46.
- Homo polled and homo black tests pending

CE	BWT	WWT	YWT	MCE	MWWT	MILK
1.0	3.4	64.6	104	2.15	55.2	22.9

PEDIGREE ESTIMATE

SIRE: **KENCO/MF POWERLINE 204L**
 HC POWER DRIVE 88H
 SAFN GLAMOUR 11J

WLE POWER STROKE
 KAPPES LADY IRISH F88
 SAC MR MT 73G
 SAC MISS JET TOP 29G

DAM: **JDF PEPSI 61U**
 REMINGTON ON TARGET 2S
 JDF MATTIE 61R

REMINGTON RED LABEL HR
 DRAKE SOFT TOUCH 15M
 GFI MAGNUM K52
 ROO KRYSTAL 34K

Lot 46

HARVIE WALK THE LINE 252A



HAR 252A

April 2, 2013

Bw: 105

Oct. 14 WW: 770

WPDA: 3.95

- Deep bodied, big hipped, lots of eye appeal
- Maternal powerhouse Pepsi and Powerline
- Retaining the right to collect 100 doses of in herd use semen
- Homo polled and homo black tests pending

MATERNAL SISTERS



HARVIE MS PEPSI 262Z
 2013 CWA Reserve Junior Champion



HARVE JDF PEPSI 22Z
 High Seller to Cale Toews



HARVIE MS PEPSI 10Z
 High Seller to Canadian Sires & Donors

Lot 47 HARVIE MONEY STREAK 112A

HAR 112A

February 13, 2013

BW: 84

Oct. 14 WW: 890

WPDA: 3.66

Polled



- Powerhouse black baldy, stoutest Pepsi calf to date
- Maternal brother to Wallbanger & Boondock
- Dam is one of the top producing females in the Simmental industry
- Maternal brothers sell as lots 45 and lot 46
- Retaining the right to collect in-herd semen
- Homo Polled and Homo black tests pending
- Owned with Jaydawn Farms

CE	BWT	WWT	YWT	MCE	MWWT	MILK
5.2	2.3	67.9	107	5.7	50.1	16.1

PEDIGREE ESTIMATE



HARVIE JDF WALLBANGER 111X

Maternal Brother

SIRE: NICHOLS BLK DESTINY D12
WHEATLAND BULL 131L
WHEATLAND LADY 908J

CIRCLE S LEACHMAN 600U
NICHOLS KELLY 75U
BBS ZIMA D55
WHEATLAND LADY 705G

DAM: REMINGTON ON TARGET 2S
JDF PEPSI 61U
JDF MATTIE 61R

REMINGTON RED LABEL HR
DRAKE SOFT TOUCH 15M
GFI MAGNUM K52
ROO KRYSTAL 34K

Lot 48 HARVIE BLAZING GUNS 147A

HAR 147A

February 20, 2013

BW: 101

Oct. 14 WW: 1060

WPDA: 4.49

Polled



- Olds Fall Classic Champion Bull, CWA Class winner
- 3/4 brother was last year's High Seller to Kopp Simmentals/Silver Lake Farms
- Testicle, meat and muscle with straight lines
- Homo Polled by parentage, Hetro Black
- Retaining the right to collect in-herd semen

CE	BWT	WWT	YWT	MCE	MWWT	MILK
2.8	4.7	70.0	106.4	4.9	51.2	16.2



HARVIE MOONSHINE 32Z

Maternal Brother & High Seller to Silver Lake Farms

SIRE: SPRINGCREEK TANK 63P
HARVIE LUCKY SEVEN 167Y
JDF PEPSI 61U

MSR KANSAS TANK 235M
NEVAS L93
REMINGTON ON TARGET 2S
JDF MATTIE 61R

DAM: TNT TOP GUN R244
HARVIE MS TRUFFLE 35X
JDN PRAIRIE PARFAIT 27L

TNT GUNNER N208
TNT MISS SADIE M68
ER RED DECK 639D
LFE TRUFFLE 42H

Lot 49

HAR 158A

February 13, 2013

Bw: 102

- His sire produced consistently marked and patterned offspring
- Ease doing deep sided bull
- Maternal sister in herd

CE	BWT	WWT	YWT	MCE	MWWT	MILK
2.4	4.9	68.7	101.2	6.2	54.9	20.5

SPRINGCREEK TANK 63P
SIRE: **HARVIE LUCKY SEVEN 167Y**
JDF PEPSI 61U

MSR KANSAS TANK 235M
NEVAS L93
REMINGTON ON TARGET 2S
JDF MATTIE 61R

HARVIE LUCKY SEVEN 158A

Oct. 14 WW: 740

WPDA: 3.05

Polled



SPRINGCREEK LINER 91P
DAM: **WINDMILL MS LINER 84W**
WINDMILL MS WHISLER 120P

RCC/TCF LINE DRIVE M181
ACS MISS CHUCKWAGON 24M
LAZY S WHISTLER 523M
WINDMILL MS DESTINY48M

Lot 50

HAR 160A

February 24, 2013

Bw: 91

- A stylish bull with top and quarter
- Big topped, free moving bull
- Maternal brother sold to Hoppins Farm

CE	BWT	WWT	YWT	MCE	MWWT	MILK
1.7	4.8	60.8	82.5	5.8	51.7	21.3

SPRINGCREEK TANK 63P
SIRE: **HARVIE LUCKY SEVEN 167Y**
JDF PEPSI 61U

MSR KANSAS TANK 235M
NEVAS L93
REMINGTON ON TARGET 2S
JDF MATTIE 61R

HARVIE LUCKY SEVEN 160A

Oct. 14 WW: 800

WPDA: 3.45

Polled



WHEATLAND BULL 655S
DAM: **KOP MS WHEATIE 116X**
KOP MS NORTH 52R

REMINGTON RED LABEL HR
WHEATLAND LADY 902J
SOUTH SEVEN NORTHERN 29N
KOP MS FREIGHTLINER 59M

Lot 51

HAR 165A

February 25, 2013

Bw: 101

- Performance Bull
- Maternal brother sold to Ryglen Holding
- Maternal sister in herd

CE	BWT	WWT	YWT	MCE	MWWT	MILK
2.8	5.0	65.7	100.0	3.7	48.8	16.0

SPRINGCREEK TANK 63P
SIRE: **HARVIE LUCKY SEVEN 167Y**
JDF PEPSI 61U

MSR KANSAS TANK 235M
NEVAS L93
REMINGTON ON TARGET 2S
JDF MATTIE 61R

HARVIE LUCKY SEVEN 165A

Oct. 14 WW: 975

WPDA: 4.22

Polled



TNT TOP GUN R244
DAM: **CMS TANYA 819U**
RDD MS 60P

TNT GUNNER N208
TNT MISS SADIE M68
LCHMN BODYBUILDER 7303F
RDD MS 85J

Lot 52 OVHF STOAKED 207A

JILL 207A

March 13, 2013

Bw: 91

Oct. 14 WW: 780

WPDA: 3.63

Polled



- Another impressive Lucky Seven
- Flashy made blaze faced bull
- High Selling heifer from MRL

CE	BWT	WWT	YWT	MCE	MWWT	MILK
5.2	4.4	65.8	94.9	7.7	52.4	19.5

SPRINGCREEK TANK 63P
SIRE: **HARVIE LUCKY SEVEN 167Y**
JDF PEPSI 61U

MSR KANSAS TANK 235M
NEVAS L93
REMINGTON ON TARGET 2S
JDF MATTIE 61R

TH BLACK EDITION 8R
DAM: **MRL MISS LASHES 586Y**
MRL MISS 656U

TNT DYNAMITE BLACK L137
BBN MS BLACK LADY 28H
TNT ON STAR S312
MRL MISS 762R

Lot 53 HARVIE TRIPLE PLAY 222A

HAR 222A

March 21, 2013

Bw: 95

Oct. 14 WW: 803

WPDA: 3.88

Polled



- Lots of eye appeal with a big hip
- Maternal brothers sold to Trendsetter Simmentals and Eagle Creek Ranching
- Dam comes from the WLF Red Licious cow family

CE	BWT	WWT	YWT	MCE	MWWT	MILK
4.8	4.0	59.9	87.8	7.2	45.3	15.3

SPRINGCREEK TANK 63P
SIRE: **HARVIE LUCKY SEVEN 167Y**
JDF PEPSI 61U

MSR KANSAS TANK 235M
NEVAS L93
REMINGTON ON TARGET 2S
JDF MATTIE 61R

NCB RED DREAM 23T
DAM: **WTW MS LICIOUS 9003W**
WTW MS LICIOUS 7004T

CNS DREAM ON L186
BBN BLACK MISTRESS 505R
WHEATLAND BULL 440P
WFL MS RED LICIOUS 5085R

Lot 54 HARVIE LUCKY SEVEN 229A

HAR 229A

March 25, 2013

Bw: 100

Oct. 14 WW: 841

WPDA: 4.14

Polled



- One of the heaviest muscled bulls on offer
- Maternal brothers sold to TJ Kubinec Farms, Boynecrest Stock Farms, Quam Cattle,
- Dam is a donor cow

CE	BWT	WWT	YWT	MCE	MWWT	MILK
3.2	3.3	58.8	83.3	0.8	48.7	19.3

SPRINGCREEK TANK 63P
SIRE: **HARVIE LUCKY SEVEN 167Y**
JDF PEPSI 61U

MSR KANSAS TANK 235M
NEVAS L93
REMINGTON ON TARGET 2S
JDF MATTIE 61R

HF REMINGTON 102E
DAM: **TWIN-CHIEF RED NILE 895N**
TWIN-CHIEF HERSHEY 895H

BS MR ARAPAHOE 811A
MISS DR A108
ER RED DASH 649D
TWIN-CHIEF FRIENDLY 595F

Hereford Embryos FOR SALE PRIVATELY



HARVIE MS FIREFLY 24U



HARVIE DAN T-BONE 196T

3 EXPORTABLE EMBRYOS



BBSF 100L UNIQUE ET 131R



TH 512X 719T PLAYMAKER 14Z

**2 PACKS OF
3 EXPORTABLE EMBRYOS**



HARVIE OVHF MS UNIQUE 80W



HARVIE DAN T-BONE 196T

**2 PACKS OF
3 EXPORTABLE EMBRYOS**



HARVIE OVHF UNIQUE 166T



NJW 73S W18 HOMETOWN 10Y ET

**2 PACKS OF
4 EXPORTABLE EMBRYOS**

HARVIE WINSTON 40Y {DLF IEF HYF}

Hereford Herd Sires

CVIH 40Y

February 8, 2011

BW: 84

Polled



CE	BW	WW	YW	MILK	TM
3.3	1.6	67.8	100.3	21.6	55.5

SIRE: **HARVIE WINSTON 5W**
WILGOR 55K NORTHEASTERN OL 2N
HARVIE MS FIREFLY 30T

DAM: **HARVIE MS WILD FLOWER 24W**
HARVIE TRAVELER 69T
RSK 4L SINTALUTA 5S

REMITALL ONLINE 122L
WILGOR 174H KEYLINE 29F 55K
OTAPAWA SKYMATE 2046
HARVIE JACCI 82J
KAIRURU ABERDEEN 03 0047
HARVIE PEARL 129P
HARVIE LADIES MAN 4L
RSK 700E KOKANEE 3K

HARVIE WINSTON 5W {DLF IEF HYF}

CVIH 5W

January 22, 2009

BW: 83

Polled



CE	BW	WW	YW	MILK	TM
3.1	1.9	60.8	89.3	22.7	53.1

SIRE: **WILGOR 55K NORTHEASTERN OL 2N**
REMITALL ONLINE 122L
WILGOR 174H KEYLINE 29F 55K

DAM: **HARVIE MS FIREFLY 30T**
OTAPAWA SKYMATE 2046 (ET)
HARVIE JACCI 82J

REMITALL EMBRACER 8E
REMITALL CATALINA 24H
CS BOOMER 29F
STAR STYLISH LADY 174H
SKY 236G PREMIER 132K
OTAPAWA LEONORA P23
HARVIE GOVERNOR 40G
HARVIE MISS FIREFLY 51F

OTAPAWA SKYMATE 2046 (ET) {DLF IEF HYF}

2046

September 11, 2002

Polled



CE	BW	WW	YW	MILK	TM
-0.7	4.8	53.7	81.9	28.5	55.4

SIRE: **SKY 236G PREMIER 132K**
REMITALL GOVERNOR 236G
302
CVF 302 LADY BEA 106F

DAM: **OTAPAWA LEONORA P23**
KOANUI TOP GUN K346 (ET)
OTAPAWA LEONORA H38

REMITALL CASINO 12C P
REMITALL ZERMARVEL 111Z
SLAYTON 9071 BARKLEY
FHF CL DOMINETTE 29Y
WOOLFORD P183 TOP GUN 81W
KOANUI BLUSH 9 (ET)
OTAPAWA IMPACT
OTAPAWA LEONORA 257

Hereford Herd Sires

HARVIE RAFTSMAN 16R {DLF IEF HYF}

CVIH 16R

February 8, 2005

BW: 83

Polled

- \$30/dose \$100 Certificates

CE	BW	WW	YW	MILK	TM
-1.9	4.2	58.1	86.4	18.3	47.4

SIRE: HARVIE LADIES MAN 4L
HARVIE HILLS 68H
HARVIE MISS JULIE 9J

MARK 10Y
DAM: HARVIE MISS FIREFLY 51F
HARVIE DEYNOTE 61D
HARVIE MISS NYLON 1Y

HARVIE EXTRA 35E
HARVIE MISS ANGIE 5A
HARVIE GOVERNOR 40G
HARVIE MISS GINGER 10G
REMITALL KEYNOTE 20X
MISS CRAIGIE TRUST-

DURALTA 359S NYLON 16W
CHSF 4R MISS CHOICE 11U



HARVIE HIGH ROLLER ET 66X {DLF IEF HYF}

CVIH 66X

February 16, 2010

BW: 101

Polled

- \$40/dose No Certificates

CE	BW	WW	YW	MILK	TM
-2.1	6.8	81.4	126.8	19.6	60.3

SIRE: HARVIE TRAVELER 69T
KAIRURU ABERDEEN 03 0047
HARVIE PEARL 129P

DAM: HARVIE DAN MS FIREFLY 69S
BR DM CHANNING ET
HARVIE MS FIREFLY 65P

LEELANDS TRANSITION T7
KAIRURU PLUM T44
LEVELDALE KODIAK 23C ET 19K
EASTON 26Y IRON LADY 43A

REMITALL ONLINE 122L
DM L1 DOMINETTE 820
HARVIE LADIES MAN 4L
HARVIE MISS FIREFLY 51F



HARVIE DAN RICOCHET 167U {DLF IEF HYF}

CVIH 167U

April 4, 2008

BW: 88

Polled

CE	BW	WW	YW	MILK	TM
-2.9	3.6	58.6	87.9	23.8	53.1

SIRE: HARVIE SENSATION 26S
KAIRURU ABERDEEN 03 0047
HARVIE JACCI 82J

DAM: HARVIE DAN MS FIREFLY 69S
BR DM CHANNING ET
HARVIE MS FIREFLY 65P

LEELANDS TRANSITION T7
KAIRURU PLUM T44
HARVIE GOVERNOR 40G
HARVIE MISS FIREFLY 51F

REMITALL ONLINE 122L
DM L1 DOMINETTE 820
HARVIE LADIES MAN 4L
HARVIE MISS FIREFLY 51F



HARVIE DAN T-BONE 196T {DLF IEF HYF}

Hereford Herd Sires

CVIH 196T

April 24, 2007

BW: 85

Polled



CE	BW	WW	YW	MILK	TM
0.0	4.4	60.1	102.5	25.9	56.0

SIRE: LEELANDS TRANSITION T7
KAIRURU ABERDEEN 03 0047
 KAIRURU PLUM T44

LEELANDS QUINN Q24
 LEELANDS PRINCESS P56
 KAIRURU RICARDO R46 (ET)
 KAIRURU PLUM P11

DAM: HARVIE LADIES MAN 4L
HARVIE MS FIREFLY 65P
 HARVIE MISS FIREFLY 51F

HARVIE HILLS 68H
 HARVIE MISS JULIE 9J
 HARVIE DEYNOTE 61D
 HARVIE MISS NYLON 1Y

HARVIE TOPHAT 92T {DLF IEF HYF}

CVIH 92T

March 3, 2007

BW: 89

Polled



CE	BW	WW	YW	MILK	TM
1.8	2.5	55.4	85.5	17.6	45.3

SIRE: HARVIE LADIES MAN 4L
HARVIE RAFTSMAN 16R
 HARVIE MISS FIREFLY 51F

HARVIE HILLS 68H
 HARVIE MISS JULIE 9J
 HARVIE DEYNOTE 61D
 HARVIE MISS NYLON 1Y
 KLONDIKE 500Z FEDERATION 7C
 SADDLE-VALLEY 46B DONNA 83BH
 REMITALL KEROSENE 71K
 JSF 23 GYPSY 16E

DAM: DXB 7C BLOCKBUSTER 3K
HARVIE RONDA 17R
 JSF 71 GYPSY 22N

HARVIE TRAVELER 69T {DLF IEF HYF}

CVIH 69T

February 21, 2007

BW: 101

Polled



CE	BW	WW	YW	MILK	TM
-3.1	6.6	71.5	114.1	17.5	53.3

SIRE: LEELANDS TRANSITION T7
KAIRURU ABERDEEN 03 0047
 KAIRURU PLUM T44

LEELANDS QUINN Q24
 LEELANDS PRINCESS P56
 KAIRURU RICARDO R46
 KAIRURU PLUM P11 43A

DAM: LEVELDALE KODIAK 23C ET 19K
HARVIE PEARL 129P
 EASTON 26Y IRON LADY 43A

JSF 37 271 DEVO 23C
 LEVELDALE MISS VARSITY VIC 26D
 EASTON MORE SUMMIT 26Y
 VVHF MISS STELLA 7W

Lot 55

HARVIE JOHNNY CASH 12A

CVIH 12A

January 27, 2013

BW: 90

Oct. 14 WW: 840

WPDA: 3.23

Polled



DAM OF LOT 55

- Retaining in-herd semen use
- Strong cow family "Firefly"
- Dam was a class winner at 2012 World Hereford Congress
- Powerfully constructed, lots of eye appeal

CE	BW	WW	YW	MILK	TM
-0.2	4.9	67.1	99.9	27.2	60.8

SIRE: HARVIE RAFTSMAN 16R
HARVIE OVHF WALK HARD 154U
 BBSF 100L UNIQUE ET 131R

HARVIE LADIES MAN 4L
 HARVIE MISS FIREFLY 51F
 BRL CALL 100L
 BBSF 7C UNIQUE 1K

DAM: HARVIE WINSTON 5W
HARVIE MS FIREFLY 125Y
 HARVIE MS FIREFLY ET 55W

WILGOR 55K NORTHEASTERN OL2N
 HARVIE MS FIREFLY 30T
 HARVIE TRAVELER 69T
 HARVIE MS FIREFLY ET 24S

Lot 56

HARVIE KEYNOTE 127A

CVIH 127A

February 16, 2013

BW: 98

Oct. 14 WW: 890

WPDA: 3.71

Polled



- Sired by a breeding legend "Keynote"
- Dam is donor cow and dam of lots 56, 81 and 82
- Maternal brother to Winston 5W
- Unbelievable pedigree and phenotype

CE	BW	WW	YW	MILK	TM
-4.0	5.6	56.4	96.4	19.2	47.4



DAM OF LOT 56, 81 & 82

SIRE: REMITALL TEAMSTER 9T
REMITALL KEYNOTE 20X
 REMITALL PATRICIA 99P

REMITALL NORTHLIGHT 152N
 REMITALL PET 174P
 REMITALL LIMELIGHT 40L
 REMITALL MARIGOLD 63M

DAM: OTAPAWA SKYMATE 2046 (ET)
HARVIE MS FIREFLY 30T
 HARVIE JACCI 82J

SKY 236G PREMIER 132K
 OTAPAWA LEONORA P23
 HARVIE GOVERNOR 40G
 HARVIE MISS FIREFLY 51F

Lot 57

HARVIE 5W WINSTON 140A

CVIH 140A

February 18, 2013

Bw: 83

Oct. 14 WW: 881

WPDA: 3.70

Polled



HARVIE VICTOR 62Z
MATERNAL BROTHER
& HIGH SELLER TO
KRAUS BROS.

- Power, Performance, Muscle, Style, Calving ease and the list goes on
- Maternal brother was the high selling bull last year to Kraus Bros
- Dam comes from our "Firebird" cow family Reserve National Champion Female
- Retaining in-herd semen use

CE	BW	WW	YW	MILK	TM
2.2	1.9	57.0	86.9	24.8	53.3

SIRE: **HARVIE WINSTON 5W**
WILGOR 55K NORTHEASTERN OL 2N
HARVIE MS FIREFLY 30T

REMITALL ONLINE 122L
WILGOR 174H KEYLINE 29F 55K
OTAPAWA SKYMATE 2046 (ET)
HARVIE JACCI 82J

DAM: **HARVIE MS FIREBIRD 90X**
HARVIE DAN RICOCHET 167U
HARVIE MS FIREBIRD 135P

HARVIE SENSATION 26S
HARVIE DAN MS FIREFLY 69S
LEVELDALE KODIAK 23C ET 19K
HARVIE MISS FIREBIRD 41F

Lot 58

HARVIE T-BONE 65A

CVIH 65A

February 5, 2013

Bw: 92

Oct. 14 WW: 897

WPDA: 3.57

Polled



- Rugged made T-Bone son
- Dam has produce several sons and daughters that have gone into purebred herds
- Maternal brother to the dam of lot 57 and the high selling bull last year

CE	BW	WW	YW	MILK	TM
0.6	3.6	50.3	86.7	24.6	49.8

SIRE: **HARVIE DAN T-BONE 196T**
KAIRURU ABERDEEN 03 0047
HARVIE MS FIREFLY 65P

LEELANDS TRANSITION T7
KAIRURU PLUM T44
HARVIE LADIES MAN 4L
HARVIE MISS FIREFLY 51F

DAM: **HARVIE MS FIREBIRD 135P**
LEVELDALE KODIAK 23C ET 19K
HARVIE MISS FIREBIRD 41F

JSF 37 271 DEVO 23C
LEVELDALE MISS VARSITY VIC 26D
HARVIE DEYNOTE 61D
WTK 21N GWEN 18S

Lot 59

CVIH 119A

February 15, 2013

Bw: 85

HARVIE 5W WINSTON 119A

Oct. 14 WW: 918

WPDA: 3.81

Polled

- Power bull with a moderate birth weight
- Comes from the same cow family that produced us Deynote

CE	BW	WW	YW	MILK	TM
3.6	1.5	55.1	83.1	18.8	46.4

WILGOR 55K NORTHEASTERN OL 2N
SIRE: HARVIE WINSTON 5W
 HARVIE MS FIREFLY 30T

REMITALL ONLINE 122L
 WILGOR 174H KEYLINE 29F 55K
 OTAPAWA SKYMATE 2046 (ET)
 HARVIE JACCI 82J



BR DM CHANNING ET
DAM: HARVIE MS MARIEL 201T
 HARVIE MS MARIEL 83M

REMITALL ONLINE 122L
 DM LI DOMINETTE 820
 LEVELDALE KODIAK 23C ET 19K
 HARVIE MISS JOAN 92J

Lot 60

JILL 148A

February 21, 2013

Bw: 90

OVHF STOAKED 148A

Oct. 14 WW: 712

WPDA: 3.03

Polled

- Strong maternal package
- Dam was Reserve Senior Champion at World Congress
- 3/4 sister sold for \$11,000 Ghyll Beck Hereford Stud
- Owned with Vern Featherstone, SK

CE	BW	WW	YW	MILK	TM
1.9	2.7	54.1	91.3	20.0	47.1

WILGOR 55K NORTHEASTERN OL 2N
SIRE: HARVIE WINSTON 5W
 HARVIE MS FIREFLY 30T

REMITALL ONLINE 122L
 WILGOR 174H KEYLINE 29F 55K
 OTAPAWA SKYMATE 2046 (ET)
 HARVIE JACCI 82J



DAM OF LOT 60



HARVIE TRAVELER 69T
DAM: HARVIE MS RONDA 41W
 HARVIE RONDA 17R

KAIRURU ABERDEEN 03 0047
 HARVIE PEARL 129P
 DXB 7C BLOCKBUSTER 3K
 JSF 71 GYPSY 22N

Lot 61

CVIH 155A

February 23, 2013

Bw: 91

HARVIE 5W WINSTON 155A

Oct. 14 WW: 759

WPDA: 3.26

Polled

- Deep bodied, easy doing bull
- Out of the Firefly family

CE	BW	WW	YW	MILK	TM
0.6	3.6	50.3	86.7	24.6	49.8

WILGOR 55K NORTHEASTERN OL 2N
SIRE: HARVIE WINSTON 5W
 HARVIE MS FIREFLY 30T

REMITALL ONLINE 122L
 WILGOR 174H KEYLINE 29F 55K
 OTAPAWA SKYMATE 2046 (ET)
 HARVIE JACCI 82J



GOLDEN-OAK 4J MAXIUM 28M
DAM: HARVIE MS FIREFLY 8U
 HARVIE PAMELA 90P

EAGLE-RIDGE BLASTER ET 4J
 TA-BAR CHANTELE 15K
 HARVIE MATADOR 28M
 HARVIE MISS CONNIE 1Y 19L

Lot 62 HARVIE 40Y WINSTON 8A

CVIH 8A

January 24, 2013

Bw: 93

Oct. 14 WW: 910

WPDA: 3.46

Polled



- Proven Donor Dam 15 progeny registered
- 11 maternal brothers sold in our Annual Bull Sale
- 2 maternal sister were high selling females in our Fall Sale

CE	BW	WW	YW	MILK	TM
1.6	3.8	59.0	91.9	18.0	47.5

SIRE: HARVIE WINSTON 40Y
 HARVIE WINSTON 5W
 HARVIE MS WILD FLOWER 24W

WILGOR 55K NORTHEASTERN OL2N
 HARVIE MS FIREFLY 30T
 HARVIE TRAVELER 69T
 RSK 4L SINTALUTA 5S

DAM: DTHF RAVIN 144R
 GNF 122L LINEDRIVE ET 56N
 DTHF MACEY 144M

REMITALL ONLINE 122L
 WALPOLE TEQUILLA ET 13A
 DTHF WLB FEDERAL 10E
 TRUMAC MISS RAIDER 5J

Lot 63 HARVIE 40Y WINSTON 19A

CVIH 19A

January 29, 2013

Bw: 83

Oct. 14 WW: 864

WPDA: 3.35

Polled



- Soggy made heifer bull
- 3/4 sister was our heaviest weaning heifer calf this fall and was sold to Square D Polled Herefords

CE	BW	WW	YW	MILK	TM
0.0	3.4	60.1	93.9	22.9	53.0

SIRE: HARVIE WINSTON 40Y
 HARVIE WINSTON 5W
 HARVIE MS WILD FLOWER 24W

WILGOR 55K NORTHEASTERN OL2N
 HARVIE MS FIREFLY 30T
 HARVIE TRAVELER 69T
 RSK 4L SINTALUTA 5S

DAM: HARVIE MS RITA 135Y
 HARVIE SENSATION 26S
 SQUARE-D RITA 990U

KAIRURU ABERDEEN 03 0047
 HARVIE JACCI 82J
 REMITALL SUPER DUTY 42S
 SQUARE-D JAEDEN 190M

Lot 64 HARVIE 40Y WINSTON 88A

CVIH 88A

February 10, 2013

Bw: 78

Oct. 14 WW: 804

WPDA: 3.27

Polled



- Heifer Approved
- Big topped attractive made bull
- Comes from our Ms Medonte Cow family

CE	BW	WW	YW	MILK	TM
2.0	1.9	52.7	88.0	19.7	46.1

SIRE: HARVIE WINSTON 40Y
 HARVIE WINSTON 5W
 HARVIE MS WILD FLOWER 24W

WILGOR 55K NORTHEASTERN OL2N
 HARVIE MS FIREFLY 30T
 HARVIE TRAVELER 69T
 RSK 4L SINTALUTA 5S

DAM: HARVIE MS MEDONTE 141Y
 HARVIE SENSATION 26S
 HARVIE MS MEDONTE ET 2U

KAIRURU ABERDEEN 03 0047
 HARVIE JACCI 82J
 WILGOR 55K NORTHEASTERN OL2N
 MHPH MS 24K PRINCESS 1195N

Lot 65 HARVIE NBF1 SAF BADGER 27A

CVIH 27A

January 31, 2013

Bw: 92

Oct. 14 WW: 1025

WPDA: 4.00

Polled

- Power bull
- Dam was a class winner at Denver and a high selling female in our Fall Sale
- Maternal sister in herd
- Owned with South Alder Farms & North Bluff Farms



CE	BW	WW	YW	MILK	TM
1.0	4.0	67.8	102.4	18.7	52.6

SIRE: HARVIE WINSTON 5W
HARVIE WINSTON 40Y
 HARVIE MS WILD FLOWER 24W

WILGOR 55K NORTHEASTERN OL.2N
 HARVIE MS FIREFLY 30T
 HARVIE TRAVELER 69T
 RSK 4L SINTALUTA 5S

DAM: HARVIE RAFTSMAN 16R
HARVIE MS ULYSSES 11U
 DTHF RAVIN 144R

HARVIE LADIES MAN 4L
 HARVIE MISS FIREFLY 51F
 GNF 122L LINEDRIVE ET 56N
 DTHF MACEY 144M

Lot 66

HARVIE 40Y WINSTON 71A

CVIH 71A

February 6, 2013

Bw: 77

Oct. 14 WW: 796

WPDA: 3.18

Polled

- Heifer Approved
- Long fronted, deep ribbed bull
- Dam is a direct daughter of Firefly 51F



CE	BW	WW	YW	MILK	TM
1.8	1.7	55.0	86.2	22.9	50.4

SIRE: HARVIE WINSTON 5W
HARVIE WINSTON 40Y
 HARVIE MS WILD FLOWER 24W

WILGOR 55K NORTHEASTERN OL.2N
 HARVIE MS FIREFLY 30T
 HARVIE TRAVELER 69T
 RSK 4L SINTALUTA 5S

DAM: NJW FHF 9710 TANK 45P
HARVIE MS FIREFLY ET 300Y
 HARVIE MISS FIREFLY 51F

FHF 8403 STARBUCK 19H
 GV 579 VICTORIA 9710
 HARVIE DEYNOTE 61D
 HARVIE MISS NYLON 1Y

Lot 67

HARVIE 40Y WINSTON 89A

CVIH 89A

January 10, 2013

Bw: 75

Oct. 14 WW: 788

WPDA: 2.84

Polled

CE	BW	WW	YW	MILK	TM
2.8	1.0	51.9	80.4	19.0	45.0

SIRE: HARVIE WINSTON 5W
HARVIE WINSTON 40Y
 HARVIE MS WILD FLOWER 24W

WILGOR 55K NORTHEASTERN OL.2N
 HARVIE MS FIREFLY 30T
 HARVIE TRAVELER 69T
 RSK 4L SINTALUTA 5S

DAM: HARVIE WILLY 73W
HARVIE MS FIREFLY 59Y
 HARVIE MS FIREFLY 8U

HARVIE TRAVELER 69T
 HARVIE MS NYLON ET 34R
 GOLDEN-OAK 4J MAXIUM 28M
 HARVIE PAMELA 90P

- Super Calving ease of a first calf heifer
- Cherry red
- Comes from the "Firefly Cow Family"

Lot 68 OVHF AXA 40Y WINSTON 174A

JILL 174A

March 1, 2013

BW: 90

Oct. 14 WW: 755

WPDA: 3.33

Polled



- Pigment, patter and structure
- Rugged made bull with eye appeal
- Grandmother is a Donor Cow for OVHF
- Owned with AXA Polled Herefords

CE	BW	WW	YW	MILK	TM
1.1	4.1	59.2	96.9	20.7	50.3



GHC MISS CARLSON 78M - GRANDMOTHER

SIRE: HARVIE WINSTON 5W
HARVIE WINSTON 40Y
 HARVIE MS WILD FLOWER 24W

WILGOR 55K NORTHEASTERN OL 2N
 HARVIE MS FIREFLY 30T
 HARVIE TRAVELER 69T
 RSK 4L SINTALUTA 5S

DAM: HARVIE WILLY 73W
OVHF AXA MISS CARLSON 97Y
 OVHF 199S MISS CARLSON ET 70U

HARVIE TRAVELER 69T
 HARVIE MS NYLON ET 34R
 57G STAMINA ET 199S
 GHC MISS CARLSON 78M

Lot 69 HARVIE RICOCHET 118A

CVIH 118A

February 14, 2013

BW: 81

Oct. 14 WW: 815

WPDA: 3.37

Polled



- Heifer Approved
- Eye catching bull with a massive amount of muscle
- Line bred "Firefly" with ideal EPDs
- Unreal pattern and structure

CE	BW	WW	YW	MILK	TM
-0.3	3.0	55.0	83.0	21.9	49.4

SIRE: HARVIE SENSATION 26S
HARVIE DAN RICOCHET 167U
 HARVIE DAN MS FIREFLY 69S

KAIRURU ABERDEEN 03 0047
 HARVIE JACCI 82J
 BR DM CHANNING ET
 HARVIE MS FIREFLY 65P

DAM: HARVIE WINSTON 5W
HARVIE MS PRECIOUS 44Y
 HARVIE MS PRECIOUS 53W

WILGOR 55K NORTHEASTERN OL 2N
 HARVIE MS FIREFLY 30T
 HARVIE RAFTSMAN 16R
 OVHF PRECIOUS EMMA 17N

Lot 70 HARVIE BH 40Y WINSTON 122A

CVIH 122A

February 15, 2013

Bw: 72

Oct. 14 WW: 722

WPDA: 3.00

Polled



- One of the deepest ribbed bulls on offer, plus he has a 72lbs birth weight
- Dam is a Donor cow, maternal brother sells lot 71
- Owned with Bird's Hill

CE	BW	WW	YW	MILK	TM
4.1	-0.3	54.9	81.7	22.1	49.6



DAM OF LOT 70

SIRE: HARVIE WINSTON 5W
HARVIE WINSTON 40Y
 HARVIE MS WILD FLOWER 24W

WILGOR 55K NORTHEASTERN OL2N
 HARVIE MS FIREFLY 30T
 HARVIE TRAVELER 69T
 RSK 4L SINTALUTA 5S

DAM: HARVIE DAN RICOCHET 167U
HARVIE MS RONDA 24X
 HARVIE RONDA 17R

HARVIE SENSATION 26S
 HARVIE DAN MS FIREFLY 69S
 DXB 7C BLOCKBUSTER 3K
 JSF 71 GYPSY 22N

Lot 71 HARVIE AXA SKYBIRD ET 235A

CVIH 235A

March 29, 2013

Bw: 94

Oct. 14 WW: 780

WPDA: 3.92

Polled



- Performance, Style and an outcross pedigree
- Dam was the high selling bred in our fall female sale
- Dam is a maternal sister to Top Hat a herdsire for Lyons Polled Herefords and Harvie Ranching
- Owned with AXA Polled Herefords

CE	BW	WW	YW	MILK	TM
0.2	3.4	51.7	79.8	25.6	51.5

SIRE: SKY 236G PREMIER 132K
OTAPAWA SKYMATE 2046
 OTAPAWA LEONORA P23

REMITALL GOVERNOR 236G
 CVF 302 LADY BEA 106F
 KOANUI TOP GUN K346
 OTAPAWA LEONORA H38

DAM: HARVIE DAN RICOCHET 167U
HARVIE MS RONDA 24X
 HARVIE RONDA 17R

HARVIE SENSATION 26S
 HARVIE DAN MS FIREFLY 69S
 DXB 7C BLOCKBUSTER 3K
 JSF 71 GYPSY 22N

Lot 72

HARVIE BH SKYFIRE 35A

CVIH 35A

February 1, 2013

Bw: 88

Oct. 14 WW: 794

WPDA: 3.11

Polled



DAM OF LOT 72.

- Outcross bull with calving ease, muscle and style
- Dam was CWA Res Heifer Calf Champion and maternal sister to T-Bone
- Heifer Approved
- Owned with Bird's Hill

CE	BW	WW	YW	MILK	TM
-0.2	4.7	53.8	87.5	24.7	51.6

SIRE: SKY 236G PREMIER 132K
OTAPAWA SKYMATE 2046
 OTAPAWA LEONORA P23

REMITALL GOVERNOR 236G
 CVF 302 LADY BEA 106F
 KOANUI TOP GUN K346
 OTAPAWA LEONORA H38

DAM: TH 75J 243R BAILOUT 144U ET
HARVIE MS FIREFLY ET 25Y
 HARVIE MS FIREFLY 65P

TH SHR 605 57G BISMARCK 243R
 KB 615C NICKY 75J
 HARVIE LADIES MAN 4L
 HARVIE MISS FIREFLY 51F

Lot 73 HARVIE SKYFALL 68A

CVIH 68A

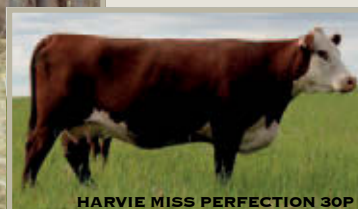
February 5, 2013

Bw: 94

Oct. 14 WW: 802

WPDA: 3.20

Polled



HARVIE MISS PERFECTION 30P

DAM OF LOT 73

- Dam is a proven donor cow with a strong udder
- 3 maternal brothers sold to 2 purebred herds and 2 to commercial herds
- 3 sister sold to purebred herds

CE	BW	WW	YW	MILK	TM
-1.0	3.8	42.8	68.4	22.7	44.1

SIRE: SKY 236G PREMIER 132K
OTAPAWA SKYMATE 2046
 OTAPAWA LEONORA P23

REMITALL GOVERNOR 236G
 CVF 302 LADY BEA 106F
 KOANUI TOP GUN K346
 OTAPAWA LEONORA H38

DAM: HARVIE LADIES MAN 4L
HARVIE MISS PERFECTION 30P
 HARVIE GWEN MARVEL 6G

HARVIE HILLS 68H
 HARVIE MISS JULIE 9J
 HARVIE DEYNOTE 61D
 HARVIE MISS ELSIE 7E

Lot 74

HARVIE SKY ROCKET ET 72A

CVIH 72A

February 6, 2013

Bw: 93

Oct. 14 WW: 915

WPDA: 3.66

Polled



CE	BW	WW	YW	MILK	TM
-2.1	4.3	48.5	79.7	19.1	43.4

- Big bodied, huge hip and lots of performance
- Dam has produced over \$500,000 worth of progeny
- Outcross sire with an ideal phenotype

SKY 236G PREMIER 132K
 SIRE: **OTAPAWA SKYMATE 2046**
 OTAPAWA LEONORA P23

REMITALL GOVERNOR 236G
 CVF 302 LADY BEA 106F
 KOANUI TOP GUN K346
 OTAPAWA LEONORA H38

HARVIE DEYNOTE 61D
 DAM: **HARVIE MISS FIREFLY 51F**
 HARVIE MISS NYLON 1Y

REMITALL KEYNOTE 20X
 MISS CRAIGIE TRUSTMARK 10Y
 DURALTA 359S NYLON 16W
 CHSF 4R MISS CHOICE 11U

Lot 75

HARVIE SKYMATE ET 54A

CVIH 54A

February 3, 2013

Bw: 97

Oct. 14 WW: 985

WPDA: 3.89

Polled



- Son of Firefly 51F a foundation female in our program
- Extra growth and length of body
- Sire is a real outcross in North America

CE	BW	WW	YW	MILK	TM
-2.1	4.3	48.5	79.7	19.1	43.4



DAM OF LOT 75

SKY 236G PREMIER 132K
 SIRE: **OTAPAWA SKYMATE 2046**
 OTAPAWA LEONORA P23

REMITALL GOVERNOR 236G
 CVF 302 LADY BEA 106F
 KOANUI TOP GUN K346
 OTAPAWA LEONORA H38

HARVIE DEYNOTE 61D
 DAM: **HARVIE MISS FIREFLY 51F**
 HARVIE MISS FIREFLY 51F

REMITALL KEYNOTE 20X
 MISS CRAIGIE TRUSTMARK 10Y
 DURALTA 359S NYLON 16W
 CHSF 4R MISS CHOICE 11U

Lot 76

HARVIE SKYMATE ET 301A



Full Brothers

CVIH 301A

February 7, 2013

BW: 78

Oct. 14 WW: 855

WPDA: 3.43

Polled

- Performance, calving ease and pigment
- Full sister sold for \$14,000
- Dam was selected as pick of our herd by Wascana Herefords

CE	BW	WW	YW	MILK	TM
-0.1	3.4	51.5	79.4	23.5	49.3

Lot 77

HARVIE SKYMATE ET 308A



HARVIE MS FIREFLY 24U
DAM OF LOT 77 & 76

CVIH 308A

February 14, 2013

BW: 98

Oct. 14 WW: 821

WPDA: 3.39

Polled

- Huge hip and lots of length
- Dam is the top producing female in our herd
- Ideal EPDs and phenotype

CE	BW	WW	YW	MILK	TM
-0.1	3.4	51.5	79.4	23.5	49.3

SKY 236G PREMIER 132K
SIRE: **OTAPAWA SKYMATE 2046**
OTAPAWA LEONORA P23

REMITALL GOVERNOR 236G
CVF 302 LADY BEA 106F
KOANUI TOP GUN K346
OTAPAWA LEONORA H38

BNMHPH 13P HEAT 101S
DAM: **HARVIE MS FIREFLY 24U**
HARVIE MISS CONNIE 1Y 19L

REMITALL PATRIOT ET 13P
ANL PBG 29F BONNIE 21P
HARVIE HILLS 68H
HARVIE JACCI 82J (CVIH 82J)

Lot 78

HARVIE OVHF SKYMATE 80A

CVIH 80A

February 7, 2013

Bw: 82

Oct. 14 WW: 834

WPDA: 3.35

Polled

- Heifer Approved
- Comes from the "Unique" cow family
- Granddam is a full sister to the 2012 CWA Champion Female
- Outcross sire with unreal milk EPDs

CE	BW	WW	YW	MILK	TM
-0.9	4.7	59.2	92.3	25.3	54.9

SKY 236G PREMIER 132K
SIRE: **OTAPAWA SKYMATE 2046**
OTAPAWA LEONORA P23

REMITALL GOVERNOR 236G
CVF 302 LADY BEA 106F
KOANUI TOP GUN K346
OTAPAWA LEONORA H38



HARVIE TRAVELER 69T
DAM: **HARVIE OVHF MS UNIQUE 117Y**
HARVIE OVHF UNIQUE 166T

KAIRURU ABERDEEN 03 0047
HARVIE PEARL 129P
HARVIE RAFTSMAN 16R
BBSF 100L UNIQUE ET 131R

Lot 79

HARVIE BIG SKY 136A

CVIH 136A

February 17, 2013

Bw: 85

Oct. 14 WW:834

WPDA: 3.49

Polled

- Maternal power house with patter and pigment
- Dam is a maternal sister to our high selling bull to BBJ Polled Herefords Farms
- Maternal brother was a high seller last year to Bear Hill Ranch

CE	BW	WW	YW	MILK	TM
-0.2	3.7	52.3	81.2	24.8	51.0

SKY 236G PREMIER 132K
SIRE: **OTAPAWA SKYMATE 2046**
OTAPAWA LEONORA P23

REMITALL GOVERNOR 236G
CVF 302 LADY BEA 106F
KOANUI TOP GUN K346
OTAPAWA LEONORA H38



HARVIE TRAVELER 69T
DAM: **HARVIE MS GWEN 36X**
HARVIE MS GWEN 177T

KAIRURU ABERDEEN 03 0047
HARVIE PEARL 129P
HARVIE LADIES MAN 4L
HARVIE GWEN MARVEL 6G

Lot 80 HARVIE SAF TAILOR MADE ET 181A

CVIH 181A

March 3, 2013

Bw: 101

Oct. 14 WW: 826

WPDA: 3.67

Polled

- Soggy made power bull
- Dam was a CWA Champion Female
- Owned with South Alder Farms

CE	BW	WW	YW	MILK	TM
-2.5	6.2	57.1	94.7	17.7	46.3

PEDIGREE ESTIMATE

HARVIE TRAVELER 69T
SIRE: **HARVIE TAILOR MADE ET 7W**
HARVIE MISS FIREFLY 51F

KAIRURU ABERDEEN 03 0047
HARVIE PEARL 129P
HARVIE DEYNOTE 61D
HARVIE MISS NYLON 1Y



HARVIE LADIES MAN 4L
DAM: **HARVIE MS NYLON 102U**
HARVIE MS NYLON ET 34R

HARVIE HILLS 68H
HARVIE MISS JULIE 9J
BRL CALL 100L
HARVIE MISS NYLON 1Y

Lot 81

HARVIE TRAVELER ET 303A



Full Brothers

CVIH 303A

February 9, 2013

BW: 92

Oct. 14 WW: 852

WPDA: 3.45

Polled

- Lots of performance and hair
- Maternal brother to Winston 5W and lot 56
- Full brother sells as lot 82

CE	BW	WW	YW	MILK	TM
-1.3	4.2	56.8	91.0	18.4	46.8

Lot 82

HARVIE TRAVELER ET 305A



HARVIE MS FIREFLY 30T
DAM OF LOT 56, 81 & 82

CVIH 305A

February 13, 2013

BW: 104

Oct. 14 WW: 804

WPDA: 3.31

Polled

- Cherry red and super soft made
- Maternal brothers working at Kraus Bros, Howard Hawkwoods and Dave Eckert's
- Full brother sells as lot 81

CE	BW	WW	YW	MILK	TM
-1.3	4.2	56.8	91.0	18.4	46.8

SIRE: KAIRURU ABERDEEN 03 0047
HARVIE TRAVELER 69T
HARVIE PEARL 129P

LEELANDS TRANSITION T7
KAIRURU PLUM T44
LEVELDALE KODIAK 23C ET 19K
EASTON 26Y IRON LADY 43A

DAM: OTAPAWA SKYMATE 2046
HARVIE MS FIREFLY 30T
HARVIE JACCI 82J

SKY 236G PREMIER 132K
OTAPAWA LEONORA P23
HARVIE GOVERNOR 40G
HARVIE MISS FIREFLY 51F

Lot 83



HARVIE VICTOR ET 312A

CVIH 312A BW: 82 WPDA: 2.92
 February 19, 2013 Oct. 14 WW: 693 Polled

Lot 84



HARVIE VICTOR ET 315A

CVIH 315A BW: 74 WPDA: 2.87
 February 20, 2013 Oct. 14 WW: 677 Polled

Full Brothers

Lot 85



HARVIE VICTOR ET 317A

CVIH 317A BW: 84 WPDA: 2.97
 February 23, 2013 Oct. 14 WW: 693 Polled

CE	BW	WW	YW	MILK	TM
4.2	2.2	51.8	78.8	23.2	49.1

- 3 calving ease bulls
- 3 full sibling bulls that look like peas in a pod
- Moderate, stout and easy doing
- Maternal sister was a CWA Champion Female



HARVIE MS NYLON ET 34R

Dam of Lot 83, 84, & 85
 H 8E EMBRACER 8006
 BRL DELUXIE 100A
 DURALTA 359S NYLON 16W
 CHSF 4R MISS CHOICE 11U

SIRE: TH 122 711 VICTOR 719T
 DRF JWR PRINCE VICTOR 71I
 KBCR 19D DOMINETTE 122

HRP THM VICTOR 109W 9329
 RHF 964 VICTRA 4057
 NJW 1Y WRANGLER 19D
 KBCR DOMINETTE 9112

DAM: HARVIE MS NYLON ET 34R
 BRL CALL 100L
 HARVIE MISS NYLON 1Y

Lot 86 HARVIE TOPHAT 58A

CVIH 58A BW: 93 WPDA: 3.35
 February 5, 2013 Oct. 14 WW: 840 Polled



- Deep side, huge hipped bull
- Maternal brother was a high seller to Willow Creek Cattle Co-op
- Maternal sister was class winner for Dorbay Polled Herefords and AXA at the 2013 Royal

CE	BW	WW	YW	MILK	TM
0.4	3.7	52.3	83.2	17.8	44.0

SIRE: HARVIE RAFTSMAN 16R
HARVIE TOPHAT 92T
 HARVIE RONDA 17R

DAM: HARVIE TRAVELER 69T
HARVIE MS GREEN 78W
 HARVIE PHOENIX 63P

HARVIE LADIES MAN 4L
 HARVIE MISS FIREFLY 51F
 DXB 7C BLOCKBUSTER 3K
 JSF 71 GYPSY 22N

KAIRURU ABERDEEN 03 0047
 HARVIE PEARL 129P
 HARVIE LADIES MAN 4L
 HARVIE MISS JOAN 92J

Lot 87 HARVIE TOPHAT 125A

CVIH 125A BW: 71 WPDA: 3.44
 February 16, 2013 Oct. 14 WW: 825 Polled



- Heifer Approved
- Dam is a full sister to Tailor Made who sold for \$80,500
- Sire Top Hat is one of Bill Lyons favorite breeding bulls ever

CE	BW	WW	YW	MILK	TM
2.2	0.5	49.8	78.5	15.9	40.8

SIRE: HARVIE RAFTSMAN 16R
HARVIE TOPHAT 92T
 HARVIE RONDA 17R

DAM: HARVIE TRAVELER 69T
HARVIE MS FIREFLY ET 8W
 HARVIE MISS FIREFLY 51F

HARVIE LADIES MAN 4L
 HARVIE MISS FIREFLY 51F
 DXB 7C BLOCKBUSTER 3K
 JSF 71 GYPSY 22N

KAIRURU ABERDEEN 03 0047
 HARVIE PEARL 129P
 HARVIE DEYNOTE 61D
 HARVIE MISS NYLON 1Y

Lot 88 HARVIE DAN SNIPER 203Z

CVIH 203Z May 1, 2012 Bw: 75 Polled



- Calving ease with extra age
- Maternal brother to the following herdsires at Harvie Ranching High Roller and Ricochet
- Dam is one of the most proven females in our herd

CE	BW	WW	YW	MILK	TM
6.0	-0.3	55.5	82.0	24.3	52.1

SIRE: DRF JWR PRINCE VICTOR 71I
TH 122 71I VICTOR 719T
 KBCR 19D DOMINETTE 122

DAM: BR DM CHANNING ET
HARVIE DAN MS FIREFLY 69S
 HARVIE MS FIREFLY 65P

HRP THM VICTOR 109W 9329
 RHF 964 VICTRA 4057
 NJW 1Y WRANGLER 19D
 KBCR DOMINETTE 9112
 REMITALL ONLINE 122L
 DM L1 DOMINETTE 820
 HARVIE LADIES MAN 4L
 HARVIE MISS FIREFLY 51F



HARVIE DAN MS FIREFLY 69S
 Dam



TH 122 71I VICTOR 719T
 Sire



HARVIE DAN RICOCHET 167U
 Maternal Brother

Team Roping Ranch Horse

Lot 89 "BLUE"



It is with mixed emotions that I sell Blue, a 17 year old gelding. This grey stout horse is one of the best I've owned however I don't have the time to ride him as I have 2 younger horses that need more time. Blue is very well rounded and is a reliable horse. He has been trained as a heading horse for team roping and has competed in many FCA rodeos and roping jackpots. This ranch horse excels at doctoring cattle out in the summer pastures, bringing cows into AI as well as dragging calves at brandings. His gentle nature and maturity makes him suitable for all levels of riders including children.

Kind regards,
Scott Harvie



SALE BROADCASTED LIVE AT
WWW.SUPERIORLIVESTOCK.COM

FORT WORTH, TEXAS
tel: 800.422.2117
fax: 817.624.3325
131 E. Exchange Ave.
Suite 121
Fort Worth, TX 76164

BRUSH, COLORADO
tel: 800.523.6610
fax: 970.842.2705
1155 N. Colorado Ave.
Brush, CO 80723

Charolais



Red & Black Simmental



Polled Herefords

