



# HARVIE

— RANCHING —

COMPLETE POLLED  
HEREFORD DISPERSAL



AT THE RANCH  
**NOV 7•2020**  
OLDS, ALBERTA, CA







# Welcome

## TO OUR COMPLETE POLLED HEREFORD DISPERSAL



**I**n life, we hit many stages of decisions. Marlene and I would like to adjust our lifestyle (somewhat) and turn the reins over to Cole and Jill, thus the retirement Polled Hereford dispersal. This move will allow us to travel and visit the many friends and customers we have come to know.

Having made it an in-herd policy to mate our top bull calves on our top cow families for 45 years has resulted into a line bred herd that is highly consistent and predictable for **Color and markings – Performance – Conformation— Udder suspension and quality.**

As a ranching family we use what we market so that we know what our customers can expect.

Harvie Ranching is honored and humbled through 45 years to have our cattle influence the genetic make-up of user herds worldwide, in numerous states, and 9 Canadian provinces. We are proud of our sons and daughter in-laws' that have traveled, judged, prepared & showed cattle, calved cows, lead workshops and seminars, and mentored young cattle people, promoting Canadian cattle at home in Canada and around the globe. Cole & Jill, Scott & Kerrie have been a solid force that has made it all possible. Will & Stephani and Eric were there when they could be. Now, we enjoy seeing our grandchildren taking a keen interest in the cattle business. Finally, as we look back at the 45 years of building this herd, we want to recognize our greatest mentors, Marlene's parents, Louis and Jean Latimer.

Looking forward to seeing you all sale day and down the trail.

*Joe and Marlene*







AT THE RANCH  
**NOV 7•2020**  
OLDS, ALBERTA, CA

——— *Sale Time: 1:00pm MST* ———

**A**s we proudly put together this dispersal sale offering, we reflect on the path taken over 45 years to get to this point. As many of you know, the cattle community is resilient, generous and strong, which is why Jill and I live and breathe this business. Both our families are heavily involved in the beef industry, our bond with the land and cattle is deep and we strive for excellence in breeding purebred cattle. With our destination of becoming the next generation to run Harvie Ranching in sight, we needed a turning point to achieve this milestone, and this sale is just that. It provides the opportunity for Ian and Marlene to hand over the reins, step back and help out when they would like. After the dust settles from the sale, we look forward to rebuilding a Hereford herd with our daughters. Fortunately they have a few bred and owned females that they raise with the goal of competing at Bonanza. Our future is one that will always include red white face cows.

Let's turn our focus to the sale offering. We are beyond thrilled that this elite herd will be dispersed throughout North America to bring immense genetic opportunities to many. We are fierce competitors in the ring and enjoy fellow breeder comradery outside of the ring. Showing cattle brings many thrills, whether it is the rush of a championship slap under bright lights or hearing a customer rave about their next best one out of one of our bulls. However, for us the ultimate thrill is building a progressive herd, and having clients recognize value in our program by purchasing bulls, females and frozen genetics. We have been relentless in our quest to find new and exciting sires to mate to our top end females, resulting in a bull calf that would be used more widely in our herd. On the female end, cow families are the cornerstone of our breeding program, many of which have built a name for themselves around the globe.

We have walked across lush green fields in Europe setting our sights on full siblings of cattle in our own fields and sat ringside watching our embryo transfer cattle show at the Sydney Royal Show in Australia. Our global clientele is diverse; by asking questions, traveling across our country and to many other nations, we have tailored our herd to meet market demands with desirable traits – as a result offering sound, functional, quality cattle for ultimate customer success. The pick of the 2020 bull calves is a tremendous opportunity to lean into to a bull of your choice off of one of these great producing cows. This impressive group of bulls will be offered along with our Charolais bulls in 2021 Harvie Ranching Annual Bull Sale, March 9th, 2021 at the ranch.

This fall is sure to bring a flurry of emotions, yet we are excited for our parents to begin this new chapter in retirement, and we are grateful to continue the Harvie Ranching legacy well into the future. Our ranch borders Harvie Crest, my brother Scott, his wife Kerrie and family, who helped build the Hereford herd over many years, until they branched out with their own successful Simmental and Angus business a couple years ago. We welcome you in advance of the sale, to view the offering anytime, please give us a call if you have any questions. On sale day, Jill and I are hosting the sale at our yard sight where we have two heated barns for added space and comfort. Be prepared to be awestruck by the cow herd, entertained with live country music and well fed with a tasty home cooked lunch. We look forward to seeing you all on sale day.

Sincerely,

*Cole and Jill*





# COMPLETE POLLED HEREFORD DISPERSAL

**Location** 50 minutes from Calgary Airport • Take highway 2 north to Didsbury exit • Take highway 582 west 4 miles to the 4 way stop • Take the 2A north 4 miles to the Bergen Rd • Go west 7.5miles and Harvie Ranching is on the north side of the road between RR23 and RR24 • On arriving at Cole & Jill's yard sight (#2332), take second entrance way to parking

**From Olds** Take 2A south of Olds College 6 miles to the Bergen Rd • Go west 7.5miles and Harvie Ranching is on the North side of the road between RR23 and RR24 • On arriving at Cole & Jill's yard sight (#2332), take second entrance way to parking

## SALE STAFF AND CONTACTS

**Auctioneer** Ryan Dorran 403.507.6483  
**Hereford World** Kevin Murnin 817.991.5595  
**Ringmen** Rod Mcleod 403.540.7986  
Nate Marin 306.869.7130  
**Sales Consultants** Peterosa Exports,  
Roger Peters 403.828.9815  
Allan Hjertaas 1.306.452.8427  
**CHA Field Rep** Judy Finseth 403.852.0154  
Paul Stafford 613.297.7841

## SALE DAY CONTACTS

**Cole Harvie** 403.994.1314  
**Jill Harvie** 403.771.3502  
**Ian Harvie** 403.507.3886  
**Frank McNeely** 306.313.5834  
**Scott Harvie** 403.586.4278  
**Will Harvie** 780.902.4278  
**Nicki Ross** 587.377.1580  
(liveauctions.tv)



**Terms** The term of the sale is cash or cheque and no cattle will be transferred until cattle are paid in full.

**Purchaser's Risk** Each animal becomes the risk of the purchaser as soon as sold.

**Announcements** from the auction block will take precedence over what is printed in the catalogue.

**Delivery** Harvie Ranching will help assist with all delivery of cattle at the cost of the purchaser. Cattle will be available for pick after the last lot is sold.

**US Delivery** Cattle are moving across the border with no issues. We will help organize shipping of cattle to where ever you are in the US. To cover testing and border crossing costs, \$250 CDN will be added to the price of each animal purchased destined for the USA. The process of moving cattle to the US is expected to be seamless as usual.

**Mexico Delivery** Roger Peters will be organizing shipping of all Mexico cattle.

**Trucking** H.S Knills Company Ltd.  
1.877.442.3106 (Can/US certified company)

**Accidents** All persons attend the sale at their own risk, although every precaution will be taken to protect the comfort of the buyers.

**Guarantees** Harvie Ranching is a VPB+ approved, certified sustainable farm and a 5star Breeder. We have a full vaccination program for our cattle herd and all cattle will be sold healthy and with their fall protocols (Ivomec and vaccinations). Cows and bred heifers have all been preg check by a certified veterinarian on July 20th.

**Embryos** We work closely with Davis-Rairdan Embryo Transplants, an Internationally certified company, so all embryos collect are #1 grade embryos and exportable to most countries.

**Insurance** We recommend putting on insurance on any animals that will be staying at Harvie Ranching after the sale until they are delivered. Insurance will be available at the sale by Cassie Dorran 403.507.5953.



# ONLINE BIDDING

## LiveAuctions *How to participate and sign up to bid*

1. Go to [www.liveauctions.tv](http://www.liveauctions.tv)
2. Click the 3 bars on the top right hand side of the webpage
3. Click register
4. Fill out all the required fields
5. Verify your account, you will receive an email
6. Click on the sale you wish to bid on
7. Request a buyer number
8. You will receive a text code to input – Once the code is entered, you are good to go

**Videos** can be viewed at [harvieranching.com](http://harvieranching.com) or [liveauctions.tv](http://liveauctions.tv)



## You no longer need an app to bid from your phone.

For support during the sale, chat live with one of our representatives. Otherwise our support team at 817.725.8595 Nicki 587.377.1580, Jessy 613.229.1073, Laurie (French) 450.230.4143, Aubrie 613.818.2768, Jackie 613.585.5055



**Entertainment** Growing up as a 7th generation Albertan, Lyndsay Butler is just about as country as they come. Deeply rooted in Western lifestyle and rodeo culture, she loves getting her boots dirty almost as much as she loves songwriting and performing. One of Alberta's most promising up and coming country and western artists, Lyndsay was selected in 2019's Project WILD and will be releasing on her debut album in 2020. You can bet the farm on her!



## Davis Rairdan Inc Embryo Opportunity!

Harvie Ranching has been a long term DRI customer, successfully offering high quality embryos to the global market.

In an effort to enhance our dispersal sale buying experience, DRI and Harvie Ranching present an opportunity to tap into high quality females and capture their embryo value potential. DRI will offer a \$500 credit towards a flush of the high selling female and towards the high selling international purchased female. Also, if wanting to purchase a donor female and have her flushed at DRI, we will work with buyers. However terms must be discussed prior to the sale. Please call Cole at 1.403.994.1314

★ High selling female - \$500 DRI credit

★ High selling international female - \$500 DRI credit

**Covid Protocols** We are making every plan necessary to host a welcoming, comfortable and safe event. This is an outdoor and indoor event. As such we will be adhering to AHS guidelines on sale day. We will be recording all guests' names in the parking area. We have two barns to accommodate

allotted crowds comfortably since we have lots of room for social distancing. We will have multiple hand washing and sanitizing stations. As always we are welcoming guests to attend in advance if feeling more comfortable to do so.

**Alberta touring** If wanting to stay and extend to a vacation, several quality breeders of multiple breeds are within a few minutes of the ranch. You can tour Canmore, Banff National Park and/or Lake Louise. The Rockies are within an hour and a half from the ranch, to see the most incredible world renowned views. Take in shopping, trails, gondola rides, cuisine and much more. Visit [tourguidecanada.com](http://tourguidecanada.com) and [getyourguide.com/Banff/](http://getyourguide.com/Banff/) activities for more information.

**Irvines Western Wear** Canada's largest western store, located 20 minutes from the ranch near Crossfield, Alberta. [Irvinessaddles.ca](http://Irvinessaddles.ca)

We are a proud participating sale in the **Canadian Junior Hereford Association 2020 Lottery.**





“Upon reflection, it is easy to say that the  
**FIREFLY COW FAMILY**  
 positively shaped the Harvie Ranching breeding  
 program as we know it today.”

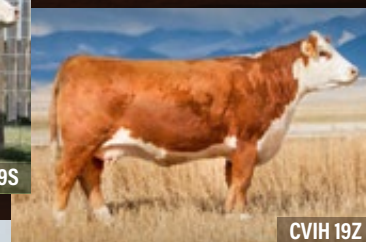


# THE FIREFLY Family

Cole remembers Firefly 51F as a young female looking so proud, always in a show stance, grabbing attention at every turn. He always knew that she would play a huge role in our program some day.

The history of Firefly 51F goes further back, with a female that came from Chestermere Polled Herefords, CHSF 4R Miss Choice 11U, who produced Harvie Miss Nylon 1Y, the dam of Firefly 51Y and many other herdsires and donor females. Cole remembers a time when customers would only want Nylon 1Y embryos and it took some time before they would buy 51F embryos. That's when he realized that calling the daughter the same name as the mother helps build a following of superb cow families.

51F was a youthful cow, with natural calves at side until 16 years of age and was flushed until 18 years of age. In total, 51F had 42 offspring that grossed over half a million dollars. She consistently produced Agribition Champions and numerous high selling progeny in Canada. In this sale, almost every single pedigree goes back to Firefly 51F and half of the females on offer carry the Firefly name. It is with much excitement that three excellent direct 51F daughters are on offer whom have been flushed successfully.





# FIREFLY FAMILY



## H1

### HARVIE MS FIREFLY 125Y

CVIH 125Y • CALVED MARCH 09 2011 • REG P C02953434

#### SIRE

Wilgor 55K Northeastern OL 2N  
Harvie Winston 5W  
Harvie MS Firefly 30T

#### DAM

Harvie Traveler 69T  
Harvie MS Firefly ET 55W  
Harvie MS Firefly ET 24S

Remital Online 122L  
Wilgor 174H Keyline 29F 55K  
Otapawa Skymate 2046 (ET)  
Harvie Jacci 82J

Kairuru Aberdeen 03 0047  
Harvie Pearl 129P  
Harvie Ladies Man 4L  
Harvie Miss Firefly 51F

CE	BW	WW	YW	MM	TM	FAT	REA	MARB
2.1	5	69.3	102.2	24.3	59	0.003	0.44	0.1

We wanted to start the sale offering with a powerhouse high producing Firefly daughter. 125Y has been a major part of our program for many years, her gorgeous daughters are a big reason why she starts this sale. 125Y is a phenomenal cow and we believe her natural 2020 bull calf is going to have big future in a breeder's operation. Her All In 7165 bull calf is going to be a sale feature in our 2021 spring bull sale. **Bred safe in calf, April 17 to Harvie Expansion ET 135G.**



CVIH 55C Firefly 125Y Daughter



CVIH 219G Firefly 125Y Son



CVIH 198C Firefly 125Y Daughter

CWA Reserve Junior Champion Sold for \$33,000 to Steven Knutson and RSK Farms



CVIH 55C



This eye-catching beauty was successfully shown as a heifer calf, at side 125Y. If asked to design a perfect female, 55C is exactly what we would build. With a perfect udder, great feet and legs, long bodied and big middled. Her fancy daughter from last year, sold to Eckert's in Minnesota. For your ROI consideration, 55C has been a great flushing female. She's bred to the current CWA Champion bull Haroldson's H United 33D 36G, that sold for \$215,000 of a 1/3 interest, this could be a big time mating! Owned with Ghyll Beck Hereford Stud, UK. **Bred safe in calf, June 2 to Haroldson's H United 33D 36G.**



CVIH 92G Firefly 55C Daughter



CVIH 138F

A moderate framed, solid cow with impressive EPD's, a 1.2 BW and a 32.4 Milk. With calving ease on her side, it allows you to open up your options on what bulls you want to use on her. 138F is an attractive fronted deep ribbed free moving female that is backed by a proven cow family. Bred to Harvie Gaucho 128G a feature bull in our 2020 bull sale, who is off of Remitall-West Brown Sugar 158D the high selling bred heifer in Canada in 2018 and CWA Res Sr Champion Female. **Pasture exposed to Harvie Gaucho 128G May 1-June 5. Due start of March.**

H2

## HARVIE MS FIREFLY 55C

CVIH 55C • CALVED FEBRUARY 02 2015 • REG P C03005209

## SIRE

TH 122 71I Victor 719T  
TH 71U 719T MR Hereford 11X  
TH 7N 45P Rita 71U

## DAM

Harvie Winston 5W  
Harvie MS Firefly 125Y  
Harvie MS Firefly ET 55W

DRF JWR Prince Victor 71I  
KBCR 19D Dominette 122  
NJV FHF 9710 Tank 45P  
TH 814H 3L Rita 7N  
Wilgor 55K Northeastern OL 2N  
Harvie MS Firefly 30T  
Harvie Traveler 69T  
Harvie MS Firefly ET 24S

CE	BW	WW	YW	MM	TM	FAT	REA	MARB
5.6	1.8	55.8	79.2	26.2	54.1	0.003	0.29	-0.11

H3

## HARVIE MS FIREFLY ET 138F

CVIH 138F • CALVED FEBRUARY 05 2018 • REG P C03048884

## SIRE

TH 122 71I Victor 719T  
CRR 719 Catapult 109  
CRR 4037 ECLIPSE 808

## DAM

Harvie Winston 5W  
Harvie MS Firefly 125Y  
Harvie MS Firefly ET 55W

DRF JWR Prince Victor 71I  
KBCR 19D Dominette 122  
THM Durango 4037  
CRR 420 Eclipse 688  
Wilgor 55K Northeastern OL 2N  
Harvie MS Firefly 30T  
Harvie Traveler 69T  
Harvie MS Firefly ET 24S

CE	BW	WW	YW	MM	TM	FAT	REA	MARB
2.4	1.2	57.3	83	32.4	61.1	0.043	0.45	-0.02



CVIH 19F

This two-year-old is a fan favorite on pasture tours and has the power to raise herd bulls year after year. Just like her dam, she is a big capacity female with an ideal udder. 19F is the type of female that is going to be able to be mated to any bull and the result will be a feature calf. Take a long look at her stunning March heifer calf 180H – she is classy in her makeup and solid in her design. We think 180H is going to have a long future as a top female in her new owner's herd. **Bred safe in calf April 17 to NJW 73S W18 Homegrown 8Y ET.**



CVIH 180H



## HARVIE MS FIREFLY ET 19F

CVIH 19F • CALVED JANUARY 20 2018 • REG P C03048878

SIRE									
TH 122 71I Victor 719T									
CRR 719 Catapult 109									
CRR 4037 ECLIPSE 808									
DAM									
Harvie Winston 5W									
Harvie MS Firefly 125Y									
Harvie MS Firefly ET 55W									
CE	BW	WW	YW	MM	TM	FAT	REA	MARB	
0.1	4.0	68.8	107	33.1	67.5	0.003	0.46	0.05	



## HARVIE MS FIREFLY 180H

CVIH 180H • CALVED MARCH 06 2020 • REG P C03072768

SIRE									
E Braxton 719									
E T719 Braxton 8016 ET									
Harvie E MS Firefly ET 19Z									
DAM									
CRR 719 Catapult 109									
Harvie MS Firefly ET 19F									
Harvie MS Firefly 125Y									
CE	BW	WW	YW	MM	TM	FAT	REA	MARB	
-0.4	4.5	60.9	91.1	30.9	61.4	0.003	0.46	0	





CVIH 211G

Since an early age 211G has been a pasture tour stopping female, with her dark red colouring, extra capacity and stoutness. Cole was touring though Oklahoma last fall and had the chance to see All In 7165's dam at Turkey Feather Ranch. Wow, what an impressive female, it sure made him excited to see his daughters in production. 211G is bred to our excited Endure son, that sold to Delaney's, Atkins and Ehlke's in our last spring. **Bred safe in calf April 21 to Harvie Expansion ET 135G.**

**H5A**

### 3 EXPORTABLE EMBRYOS

H RW All in 96B ET x Harvie Ms Firefly ET 55W  
BW 5.1 WW 58.9 YW 93.9 MM 20.5 TM 50.0



CVIH 184G

One thing is for sure – You can always count on a Firefly female to grab your attention out in a pasture and that you cannot ever have too many Firefly's in the herd. This female has extra stretch, rib dimension and is level over the top. This young bred heifer is going to have an amazing udder and a bright future. **Bred safe in calf April 20 to Harvie Expansion ET 135G.**

**H5**

## HARVIE MS FIREFLY ET 211G

CVIH 211G • CALVED MARCH 17 2019 • REG P C03060772

SIRE	
JDH JJD 9Y 485T All In 96B ET	
H RW All In 7165 ET	
EXR Terri 489	
DAM	
Harvie Traveler 69T	
Harvie MS Firefly ET 55W	
Harvie MS Firefly ET 24S	

KJ HVH 33N Redeem 485T ET
JDH MS 26U Cracker Jack 9Y ET
MSU TCF Revolution 4R
BR Terri 9130 ET
Kairuru Aberdeen 03 0047
Harvie Pearl 129P
Harvie Ladies Man 4L
Harvie Miss Firefly 51F

CE	BW	WW	YW	MM	TM	FAT	REA	MARB
4.5	3.1	58.6	92	16.8	46.1	0.053	0.48	0.1

**H6**

## HARVIE MS FIREFLY 184G

CVIH 184G • CALVED MARCH 08 2019 • REG P C03065449

SIRE	
NJW 73S W18 Hometown 10Y ET	
Harvie Cool Water ET 190B	
Harvie MS Firefly 65P	
DAM	
Kanimbla Full BOTTLE H117	
Harvie MS Firefly ET 147D	
Harvie MS Firefly ET 55W	

SHF Wonder M326 W18 ET
NJW P606 72N Daydream 73S
Harvie Ladies Man 4L
Harvie Miss Firefly 51F
Kidman Bligh D99
Kanimbla Maritana B06
Harvie Traveler 69T
Harvie MS Firefly ET 24S

CE	BW	WW	YW	MM	TM	FAT	REA	MARB
-6.3	5.9	58.7	102.8	25.5	54.9	0.013	0.27	0



CVIH 40H

A stunning pair of diamonds on offer with far reaching cow potential. They are wildly deep sided, easy doing and correct. We love how smooth made these two full sisters are and how they just flow from front to back. Both heifers are going to make great foundation females and are definitely two of the top heifer calves on offer. I'm not sure how a person is going to choose between these two heifers but, hey you could just sweep the ring and take both of them home.



CVIH 83H

H7A

HARVIE MS FIREFLY ET 40H *MDF*

CVIH 40H • CALVED FEBRUARY 01 2020 • REG P C03071097

CE	BW	WW	YW	MM	TM	FAT	REA	MARB
4.8	2.2	55.2	86.8	21.2	48.8	0.043	0.21	0

SIRE

NJW 73S W18 Hometown 10Y ET  
NJW 135U 10Y Hometown 27A  
NJW 4037 34S Durango VACA 135U

SHF Wonder M326 W18 ET  
NJW P606 72N Daydream 73S  
THM Durango 4037  
NJW P606 80L Daydream 34S ET

H7B

HARVIE MS FIREFLY ET 83H *MDC*

CVIH 83H • CALVED FEBRUARY 09 2020 • REG P C03071098

CE	BW	WW	YW	MM	TM	FAT	REA	MARB
4.8	2.6	57.3	86.8	24	52.7	0.053	0.49	-0.09

DAM

Harvie Traveler 69T  
Harvie MS Firefly ET 55W  
Harvie MS Firefly ET 24S

Kairuru Aberdeen 03 0047  
Harvie Pearl 129P  
Harvie Ladies Man 4L  
Harvie Miss Firefly 51F





CVIH 288F

This gorgeous female is angular through her front end, with an explosive middle and hind quarter. This fancy first calf heifer is a natural daughter off of 55W who has twenty-four progeny born in Canada. Her daughter is a spitting image of her dam sired by a very maternal bull. We have had several Braxton daughters in our herd, and all have been great producing females so when we had the opportunity to buy a Braxton son that goes back to P606 and Firefly 51F we jumped at the chance. Now, just wait, 288F is bred to Harvie OVHF Empower, one of the most impressive breeding bulls we have seen. **Bred July 10 to Harvie OVHF Empower ET 5F.**



CVIH 153H

**H8**

## HARVIE MS FIREFLY 288F

CVIH 288F • CALVED MARCH 11 2018 • REG P C03047731

### SIRE

TH 512X 719T Playmaker 14Z  
Harvie Overtime ET 9D  
Harvie DAN MS Firefly 69S

### DAM

Harvie Traveler 69T  
Harvie MS Firefly ET 55W  
Harvie MS Firefly ET 24S

TH 122 71I Victor 719T  
TH 122 71I Dominette 512X ET  
BR DM Channing ET  
Harvie MS Firefly 65P  
Kairuru Aberdeen 03 0047  
Harvie Pearl 129P  
Harvie Ladies Man 4L  
Harvie Miss Firefly 51F

CE	BW	WW	YW	MM	TM	FAT	REA	MARB
1.7	2.8	54.9	84.8	24.4	51.9	-0.007	0.29	0

**H8A**

## HARVIE MS FIREFLY 153H

CVIH 153H • CALVED FEBRUARY 24 2020 • REG P C03072765

### SIRE

E Braxton 719  
E T719 Braxton 8016 ET  
Harvie E MS Firefly ET 19Z

### DAM

Harvie Overtime ET 9D  
Harvie MS Firefly 288F  
Harvie MS Firefly ET 55W

Anchor Braxton  
Anchor 17R  
PW Victor Boomer P606  
Harvie Miss Firefly 51F  
TH 512X 719T Playmaker 14Z  
Harvie DAN MS Firefly 69S  
Harvie Traveler 69T  
Harvie MS Firefly ET 24S

CE	BW	WW	YW	MM	TM	FAT	REA	MARB
1.4	2.9	51.6	76	26.7	52.5	0.003	0.37	0.03



She's a broody made female that is raising a big time Empower bull calf, and he is one of the highest performing calves this year. This is the kind of female that we adore, a bull sale maker as we call them at the ranch. 66C is a moderate framed female that can put a lot of power into her calves. Her dam was sold to HBM Polled Herefords as a bred heifer where she topped our fall female sale. Bred to Harvie Captain ET 170F, our CWA class winner that is a Leader son off our Firefly 24U donor cow. **Pasture exposed May 1 to June 15 to Harvie Captain ET 170F.**

CVIH 107H *Firefly 66C Son*Captain *Service Sire*

H9

**HARVIE HBM MS FIREFLY 66C**

CVIH 66C • CALVED FEBRUARY 05 2015 • REG P C03005825

**SIRE**

SHF Wonder M326 W18 ET  
 NJW 73S W18 Hometown 10Y ET  
 NJW P606 72N Daydream 73S

**DAM**

Remitall Governor 236G  
 Harvie Shar-Lo MS Firefly 116A  
 Harvie MS Firefly ET 55W

KCF Bennett 3008 M326  
 SHF Governess 236G L37  
 PW Victor Boomer P606  
 NJW 94J Dew 72N  
 Remitall Casino 12C  
 Remitall Zermarvel 111Z  
 Harvie Traveler 69T  
 Harvie MS Firefly ET 24S

CE	BW	WW	YW	MM	TM	FAT	REA	MARB
-1	5.5	56.8	90.7	21	49.4	-0.007	0.28	0.2





CVIH 40E

A powerfully designed female that is attractive in her makeup due to her dark colour, extension in her front end and how level she is out of her hip. Ever since she was a calf 40E has been a stand out, and is going to be a great addition to your herd. At side this year is a solid solid Sackett bull calf that will be in our bull sale next spring. Bred to our new herd sire from Ehlke Herefords. **Pasture Exposed May 1 to June 15 to E 332A Hometown E124.**



CVIH 41G

A dark red, short marked Truman daughter that's going to make a great cow. We have been over the moon with our first set of Truman daughters that came into production this year. Her type and kind is spot on for so many, she is goggle eyed, clean fronted, big bodied with a square hip. 41G's dam is a real power cow that is a direct daughter off Remitall Governor 236G, a foundation sire for Remitall. Owned with HBM Polled Herefords. **Bred safe in calf May 11 to Harvie Expansion ET 135G**



**HARVIE MS FIREFLY 40E**

CVIH 40E • CALVED JANUARY 13 2017 • REG P C03032483

SIRE	
TH 512X 719T Playmaker 14Z	
Harvie Game Changer ET 214C	
Harvie MS Firefly 65P	
DAM	
Harvie Traveler 69T	
Harvie MS Firefly ET 55W	
Harvie MS Firefly ET 24S	

TH 122 71I Victor 719T	
TH 122 71I Dominette 512X ET	
Harvie Ladies Man 4L	
Harvie Miss Firefly 51F	
Kairuru Aberdeen 03 0047	
Harvie Pearl 129P	
Harvie Ladies Man 4L	
Harvie Miss Firefly 51F	

CE	BW	WW	YW	MM	TM	FAT	REA	MARB
-0.4	3.9	56.5	89.7	24.3	52.6	-0.017	0.3	-0.06



**HARVIE HBM MS FIREFLY 41G**

CVIH 41G • CALVED JANUARY 30 2019 • REG P C03058997

SIRE	
R Leader 6964	
KJ BJ 719Z Truman 695D ET	
KJ BJ 167X Velvet 719Z	
DAM	
Remitall Governor 236G	
Harvie Shar-Lo MS Firefly 116A	
Harvie MS Firefly ET 55W	

Hyalite On Target 936	
R Miss Revolution 1009	
KJ 597N Vincent 463T	
KJ BJ 325S Bridgett 167X ET	
Remitall Casino 12C	
Remitall Zermarvel 111Z	
Harvie Traveler 69T	
Harvie MS Firefly ET 24S	

CE	BW	WW	YW	MM	TM	FAT	REA	MARB
-1.9	5.7	56.1	85.9	17.9	46	0.003	0.35	0



CVIH 199H

Mid March heifer that is sure to catch some attention come sale day. This dark cherry red heifer is going to make a great show heifer. She is one of the youngest heifer calves on offer but wow is she a smoking hot little pistol. Her dam is a ¾ sister to the female that we sold for \$33,000 at CWA to Steven Knutson and RSK Farms. Owned with HBM Polled Herefords.



CVIH 37C Dam of 199H & 116G



CVIH 116G

A short marked, long bodied beauty. 116G is a calving ease, low birth weight EPD female yet she's got lots of punch to her. This deep ribbed Harvie Cool Water ET 190B daughter is line bred Firefly 51F so you know she's going to make a great cow. Owned with HBM Polled Herefords. **Bred safe in calf May 11 to Harvie Expansion ET 135G.**

## H12

### HARVIE HBM MS FIREFLY 199H

CVIH 199H • CALVED MARCH 14 2020 • REG P C03070600

SIRE	
KJ BJ 719Z Truman 695D ET	
Harvie Nightcap 193F	
Harvie MS Firefly 269D	
DAM	
CRR About Time 743	
Harvie MS Firefly ET 37C	
Harvie MS Firefly ET 55W	

R Leader 6964
KJ BJ 167X Velvet 719Z
Harvie Lucky Streak 219B
Harvie MS Firefly ET 300Y
THM Durango 4037
CRR D03 Cassie 206
Harvie Traveler 69T
Harvie MS Firefly ET 24S

CE	BW	WW	YW	MM	TM	FAT	REA	MARB
-0.9	5.1	56.6	88.4	24.1	52.4	-0.007	0.43	-0.06

## H13

### HARVIE HBM MS FIREFLY 116G

CVIH 116G • CALVED FEBRUARY 14 2019 • REG P C03062192

SIRE	
NJW 73S W18 Hometown 10Y ET	
Harvie Cool Water ET 190B	
Harvie MS Firefly 65P	
DAM	
CRR About Time 743	
Harvie MS Firefly ET 37C	
Harvie MS Firefly ET 55W	

SHF Wonder M326 W18 ET
NJW P606 72N Daydream 73S
Harvie Ladies Man 4L
Harvie Miss Firefly 51F
THM Durango 4037
CRR D03 Cassie 206
Harvie Traveler 69T
Harvie MS Firefly ET 24S

CE	BW	WW	YW	MM	TM	FAT	REA	MARB
5.9	1.1	50.8	77	28.6	54	0.013	0.35	0.07



CVIH 300Y



What a tank! Yes, she's a phenomenal Tank 45P daughter. This proven donor cow has excellent daughters in the herd who are quickly rising to the top of our program. 300Y is a direct daughter of Firefly 51F, the most influential female in our program. We are also selling a full sister to 300Y, Firefly 35Z, a drop dead gorgeous proven donor cow. If you're looking to get embryos soon this top female is selling open and ready to flush. 300Y is a solid flushing cow averaging over 10 embryos a flush. Selling at side is 300Y's natural calf, a super fancy made heifer calf. This young heifer is sweet fronted, long bodied and made for the show ring.

H14

**HARVIE MS FIREFLY ET 300Y**

CVIH 300Y • CALVED FEBRUARY 19 2011 • REG P C02957895

**SIRE**

FHF 8403 Starbuck 19H  
 NJW FHF 9710 Tank 45P  
 GV 579 Victoria 9710

**DAM**

Harvie Deynote 61D  
 Harvie Miss Firefly 51F  
 Harvie Miss Nylon 1Y

DR Achiever 8403  
 FHF RUTH 162A 18E  
 Anhinga Vic 69R 579  
 GV 2B Whitney 9533

Remitall Keynote 20X  
 Miss Craigie Trustmark 10Y  
 Duralta 359S Nylon 16W  
 CHSF 4R Miss Choice 11U

CE	BW	WW	YW	MM	TM	FAT	REA	MARB
-0.4	2.6	48.1	80.6	23.6	47.7	-0.037	0.2	-0.03

H15A  
H15B**4 EXPORTABLE EMBRYOS (2 Packages)**

Harvie OVHF Empower ET 5F x Harvie Ms Firefly ET 300Y  
 BW 4.3 WW 62.6 YW 103.1 MM 22.5 TM 53.8

CVIH 190H



H14A

**HARVIE MS FIREFLY 190H**

CVIH 190H • CALVED MARCH 10 2020 • REG P C03070788

**SIRE**

R Leader 6964  
 Harvie Captain ET 170F  
 Harvie MS Firefly 24U

Hyalite On Target 936  
 R Miss Revolution 1009  
 BNMHPH 13P Heat 101S  
 Harvie Miss Connie 1Y 19L

CE	BW	WW	YW	MM	TM	FAT	REA	MARB
0.2	3.4	60.4	94.6	25.7	55.9	0.003	0.38	0.01

H15C

**5 EXPORTABLE EMBRYOS**

Haroldson's H United 33D 36G x Harvie Ms Firefly ET 300Y  
 BW 3.6 WW 57.7 YW 93.7 MM 26.5 TM 55.4





H16

## HARVIE MS FIREFLY 269D

CVIH 269D • CALVED MARCH 04 2016 • REG P C03018770

### SIRE

Harvie All In 14Z  
Harvie Lucky Streak 219B  
Harvie MS Firebird 90X

### DAM

NJW FHF 9710 Tank 45P  
Harvie MS Firefly ET 300Y  
Harvie Miss Firefly 51F

Harvie High Roller ET 66X  
E 16R Lady Raftsman U809  
Harvie DAN Ricochet 167U  
Harvie MS Firebird 135P  
FHF 8403 Starbuck 19H  
GV 579 Victoria 9710  
Harvie Deynote 61D  
Harvie Miss Nylon 1Y

CE	BW	WW	YW	MM	TM	FAT	REA	MARB
-2.9	4	45.2	78.5	22.4	45	-0.057	0.3	0.04

Opportunity knocks, with a top-notch female that has been outdoing herself by cranking out top calves year after year. Her first son was a high seller in our annual bull sale and he was used in our herd. Her second calf was a class winner at CWA and sold to Mexico for \$18,000. Her third calf is one of the stoutest bull calves we have in the bull pen this year. Talk about being a fertile female, 269D hasn't lost any time in calving even though we have flushed her before breeding her back to calve. She has averaged 9 embryos on 2 flushes. Homo polled. **Bred safe in calf April 24 to H Montgomery 7437 ET**



CVIH 57H *Firefly 269D Son*



CVIH 193F *Firefly 269D son & sire of several sale lots*





CVIH 80H

80H is as long as a freight train with loads of middle to her. This high performing, heavy muscled heifer is going to flat out raise you herd bulls. Grampa Louis always said “it takes a cow with some power to raise a herd bull” and this heifer has it. 80H is an embryo calf off of one of Cole’s favourite donor cows 269D. 80H is homo polled. H RW All In 7165 ET is stamping his offspring and breeders are taking notice. With high sellers in fall sales so far across Canada, lean into this fancy heifer calf and/or these timely exportable embryos.

## H17A

### 2 EXPORTABLE EMBRYOS

H RW All in 96B ET x Harvie MS Firefly 269D  
BW 4.4 WW 53.1 YW 88.9 MM 22 TM 48.6



CVIH 215G

A superstar in the making, this fancy Firefly daughter is sure to produce like the females before her. Since an early age, Jill would point 215G out and rave about her all the way home from pasture tours. We really love our Truman 2 year old females and we believe 215G is going to have a beautiful udder like the rest of them. Her dam is a proven donor cow that sells along with several maternal sisters to 215G. This young Firefly granddaughter has a promising future ahead of her. **Bred safe in calf April 27 to NJW 73S W18 Homegrown 8Y.**

## H17

### HARVIE MS FIREFLY ET 80H

CVIH 80H • CALVED FEBRUARY 08 2020 • REG P C03071103

#### SIRE

JDH JJD 9Y 485T All In 96B ET  
H RW All In 7165 ET  
EXR Terri 489

#### DAM

Harvie Lucky Streak 219B  
Harvie MS Firefly 269D  
Harvie MS Firefly ET 300Y

KJ HVH 33N Redeem 485T ET  
JDH MS 26U Cracker Jack 9Y ET  
MSU TCF Revolution 4R  
BR Terri 9130 ET  
Harvie All In 14Z  
Harvie MS Firebird 90X  
NJW FHF 9710 Tank 45P  
Harvie Miss Firefly 51F

CE	BW	WW	YW	MM	TM	FAT	REA	MARB
-3.6	5.6	62	111.6	23.8	54.8	-0.007	0.64	0.06

## H18

### HARVIE MS FIREFLY 215G

CVIH 215G • CALVED MARCH 20 2019 • REG P C03057106

#### SIRE

R Leader 6964  
KJ BJ 719Z Truman 695D ET  
KJ BJ 167X Velvet 719Z

#### DAM

NJW FHF 9710 Tank 45P  
Harvie MS Firefly ET 300Y  
Harvie Miss Firefly 51F

Hyalite On Target 936  
R Miss Revolution 1009  
KJ 597N Vincent 463T  
KJ BJ 325S Bridgett 167X ET  
FHF 8403 Starbuck 19H  
GV 579 Victoria 9710  
Harvie Deynote 61D  
Harvie Miss Nylon 1Y

CE	BW	WW	YW	MM	TM	FAT	REA	MARB
2.8	2.9	58.6	87.8	22.9	52.2	0.033	0.36	0

CVIH 58E



This could be one of the best opportunities of the whole sale. 58E was the first feature female of the week Jill posted on Facebook. This beautiful young female has done a phenomenal job on her powerful heifer calf and as a bonus, she is bred to the 2019 Agribition Champion Bull Haroldson's H United 33D 36G. There's no need to buy a lottery ticket – you got one right here. This super stout made heifer calf could be the heaviest muscled heifer on offer. I know she's only a calf but I'm excited already to see the bull calves she's going to raise someday. **Bred safe in calf May 5 to Haroldson's H United 33D 36G**



CVIH 166H

HARVIE RANCHING

20

COMPLETE HERD DISPERSAL

**H 19****HARVIE MS FIREFLY 58E**

CVIH 58E • CALVED JANUARY 19 2017 • REG P C03038907

SIRE	
Harvie All In 14Z	Harvie Lucky Streak 219B
Harvie MS Firebird 90X	
DAM	
Harvie High Roller ET 66X	Harvie MS Firefly 81B
Harvie MS Firefly 300Y	

Harvie High Roller ET 66X	E 16R Lady Raftsman U809
Harvie DAN Ricochet 167U	Harvie MS Firebird 135P
Harvie Traveler 69T	Harvie DAN MS Firefly 69S
NJW FHF 9710 Tank 45P	Harvie Miss Firefly 51F

CE	BW	WW	YW	MM	TM	FAT	REA	MARB
-3	5.4	55.5	92.9	22	49.8	-0.017	0.28	0

**H 19A****HARVIE MS FIREFLY 166H**

CVIH 166H • CALVED FEBRUARY 28 2020 • REG P C03070596

SIRE	
JDH JJD 9Y 485T All In 96B ET	H RW All In 7165 ET
EXR Terri 489	
DAM	
Harvie Lucky Streak 219B	Harvie MS Firefly 58E
Harvie MS Firefly 81B	

KJ HVH 33N Redeem 485T ET	JDH MS 26U Cracker Jack 9Y ET
MSU TCF Revolution 4R	BR Terri 9130 ET
Harvie All In 14Z	Harvie MS Firebird 90X
Harvie High Roller ET 66X	Harvie MS Firefly ET 300Y

CE	BW	WW	YW	MM	TM	FAT	REA	MARB
-1.7	4.7	57.2	94.7	21.6	50.2	0.013	0.49	-0.02



CVIH 35Z



Moderate framed, huge bodied yet proud fronted and attractive made. Tank 45P has always been known for producing top producing daughters cross that with one of the most proven cow families in the industry and you get a proven donor cow. What really gets us pumped up about this cow is her heifer calf at side this year. Jill remembers looking at H RW All In 7165 ET in the Hoffman carload at Denver, both she and Andrew Kopeechuk agreed that his body shape, bone and hair was going to be a worthwhile investment. 154H has that top show ring appeal but still is packed full of genetic potential to lead the industry. 35Z sells open and ready to flush we flushed her in August where she flushed 12 embryos to Haroldson's H United 33D 36G. Owned with Edenburn Farms, IL.

CVIH 154H



## H 20 HARVIE MS FIREFLY ET 35Z

CVIH 35Z • CALVED JANUARY 26 2012 • REG P C02975369

### SIRE

FHF 8403 Starbuck 19H  
 NJW FHF 9710 Tank 45P  
 GV 579 Victoria 9710

### DAM

Harvie Deynote 61D  
 Harvie Miss Firefly 51F  
 Harvie Miss Nylon 1Y

DR Achiever 8403  
 FHF RUTH 162A 18E  
 ANHINGA VIC 69R 579  
 GV 2B Whitney 9533  
 Remitall Keynote 20X  
 Miss Craigie Trustmark 10Y  
 Duralta 359S Nylon 16W  
 CHSF 4R Miss Choice 11U

CE	BW	WW	YW	MM	TM	FAT	REA	MARB
-0.3	3.1	51.3	89.5	28.8	54.5	-0.017	0.36	-0.11

## H 20A HARVIE EF MS FIREFLY 154H

CVIH 154H • CALVED FEBRUARY 25 2020 • REG P C03068612

### SIRE

JDH JJD 9Y 485T All In 96B ET  
 H RW All In 7165 ET  
 EXR Terri 489

KJ HVH 33N Redeem 485T ET  
 JDH MS 26U Cracker Jack 9Y ET  
 MSU TCF Revolution 4R  
 BR Terri 9130 ET

CE	BW	WW	YW	MM	TM	FAT	REA	MARB
-1	4	61	105.1	28.9	59.4	0.023	0.67	-0.13

H 21A  
21B

### 3 EXPORTABLE EMBRYOS (2 Packages)

Haroldson's H United 33D 36G x Harvie Ms Firefly ET 35Z  
 BW 3.8 WW 59.2 YW 98.1 MM 29.2 TM 58.8

## H22 HARVIE EF MS FIREFLY 2G

CVIH 2G • CALVED JANUARY 10 2019 • REG P C03057212

### SIRE

TH 512X 719T Playmaker 14Z  
Harvie Streamline ET 200D  
Harvie MS Firefly 24U

### DAM

Remital Keynote 20X  
Harvie EF MS Firefly 111C  
Harvie MS Firefly ET 35Z

TH 122 71I Victor 719T  
TH 122 71I Dominette 512X ET  
BNMHPH 13P Heat 101S  
Harvie Miss Connie 1Y 19L  
Remital Teamster 9T  
Remital Patricia 99P  
NJW FHF 9710 Tank 45P  
Harvie Miss Firefly 51F

CE	BW	WW	YW	MM	TM	FAT	REA	MARB
-0.9	3.5	57.4	89.4	23.2	51.9	-0.007	0.58	-0.12

This Firefly is a power bred heifer. From the side 2G is as attractive as you will find. She is open bodied with impeccable structure. She is long fronted, ties in so nicely into her shoulder, so strong down her top and athletic on the move. Sired by Harvie Streamline ET 200D, the \$20,000 sale topping bull that is a proven female maker. Dam is a direct daughter of the legendary Remital Keynote 20X. Owned with Edenburn Farms. **Bred April 18 to Harvie Expansion ET 135G.**



CVIH 111C Dam of 2G

## H23 HARVIE MS FIREFLY ET 244D

CVIH 244D • CALVED FEBRUARY 27 2016 • REG P C03053169

### SIRE

TH 122 71I Victor 719T  
TH 512X 719T Playmaker 14Z  
TH 122 71I Dominette 512X ET

### DAM

BR DM Channing ET  
Harvie DAN MS Firefly 69S  
Harvie MS Firefly 65P

DRF JWR Prince Victor 71I  
KBCR 19D Dominette 122  
DRF JWR Prince Victor 71I  
KBCR 19D Dominette 122  
Remital Online 122L  
DM L1 Dominette 820  
Harvie Ladies Man 4L  
Harvie Miss Firefly 51F

CE	BW	WW	YW	MM	TM	FAT	REA	MARB
-2.5	3	59.7	89.9	25.6	55.5	-0.027	0.37	-0.07

More National champions have come off the dam of 244D than any other cow in our herd, including four Denver division champions. We have used multiple maternal brothers to 244D in the herd like; Ricochet, High Roller, Sniper, Cinch and Overtime. Unfortunately, we lost her calf this spring but she has as nice of an udder as you will find out there. **Bred safe in calf April 21 to Harvie Established ET 209G.**



## H24 HARVIE WSF MS FIREFLY 152C

CVIH 152C • CALVED FEBRUARY 18 2015 • REG P C03005196

### SIRE

TH 122 71I Victor 719T  
TH 71U 719T MR Hereford 11X  
TH 7N 45P Rita 71U

### DAM

Harvie Traveler 69T  
Harvie MS Firefly ET 60X  
Harvie DAN MS Firefly 69S

DRF JWR Prince Victor 71I  
KBCR 19D Dominette 122  
NJW FHF 9710 Tank 45P  
TH 814H 3L Rita 7N  
Kairuru Aberdeen 03 0047  
Harvie Pearl 129P  
BR DM Channing ET  
Harvie MS Firefly 65P

CE	BW	WW	YW	MM	TM	FAT	REA	MARB
-3	5.1	60.1	94.6	22.5	52.6	-0.007	0.34	-0.14

Dark red long bodied hard-working female. Dam is a full sister to Harvie High Roller ET 66X the multiple division champion bull at Denver and Agribition. Last years bull calf sold to A&N Herefords. Bred to Harvie Captain ET 170F, an Agribition class winning Leader son off Firefly 24U. **Pasture exposed April 20 to June 15 to Harvie Captain ET 170F. Bred safe April 30.**







## H25 HARVIE MS FIREFLY ET 81A

CVIH 81A • CALVED FEBRUARY 07 2013 • REG P C02999899

### SIRE

SKY 236G Premier 132K  
Otapawa Skymate 2046 (ET)  
Otapawa Leonora P23

Remitall Governor 236G  
CVF 302 Lady Bea 106F  
Koanui Top Gun K346 (ET)  
Otapawa Leonora H38  
Remitall Keynote 20X  
Miss Craigie Trustmark 10Y  
Duralta 359S Nylon 16W  
CHSF 4R Miss Choice 11U

### DAM

Harvie Deynote 61D  
Harvie Miss Firefly 51F  
Harvie Miss Nylon 1Y

CE	BW	WW	YW	MM	TM	FAT	REA	MARB
4.6	2.9	50.8	81	22.5	47.9	-0.027	0.48	-0.2

A powerful combination with proven results. Firefly 81A is a full sister to RSK E Digby ET 20C, the 2017 Agribition Champion Bull. 81A is one of the most impressive females on our farm with how much performance and substance she has. In Denmark at Nordbaek Hereford you'll find one of the top bull calves anywhere and he's a result of a successful flush on 81A. 81A is bred to our high selling bull in the 2020 bull sale to K-Cow Ranch. **Bred safe in calf May 2 to Harvie Established ET 209G.**



RSK E Digby 20C Full sibling to 81A



RSK E Digby 20C 2017 Agribition Champion Bull

H26A  
H26B

### 3 EXPORTABLE EMBRYOS (2 Packages)

H RW All In 7165 ET x Harvie Ms Firefly ET 81A  
BW 3.8 WW 55.6 YW 90.0 MM 22.2 TM 50.0





CVIH 87G

**H27**

## HARVIE MS FIREFLY ET 87G

CVIH 87G • CALVED FEBRUARY 08 2019 • REG P C03060762

### SIRE

KCF Bennett Encore Z311 ET  
NJW 79Z Z311 Endure 173D ET  
BW 91H 100W Rita 79Z ET

### DAM

Otapawa Skymate 2046 (ET)  
Harvie MS Firefly ET 81A  
Harvie Miss Firefly 51F

Schu-lar On Target 22S  
KCF Miss Revolution X338 ET  
NJW 73S M326 Trust 100W ET  
Remital Rita 91H  
SKY 236G Premier 132K  
Otapawa Leonora P23  
Harvie Deynote 61D  
Harvie Miss Nylon 1Y

CE	BW	WW	YW	MM	TM	FAT	REA	MARB
-1	4.9	68.4	109.4	28.1	62.3	-0.007	0.58	0.11

One of the first Endure daughters to sell in Canada and wow is she a dandy. Last spring Endure sons topped the market in the US and they were high selling bulls in our bull sale too! 87G's dam is a full sister to the 2017 Agribition Champion Bull. We feel this dark red female is going to have a really promising future. **Bred safe in calf April 20 to NJW 73S W18 Homegrown 8Y.**



CVIH 146F

What a great job this big bodied first calf heifer is doing on her fancy heifer calf. We purchased Ehlke Herefords leader off of a fall born bull 2 years ago for \$15,000 and we are very happy with his first group of calves that were born this spring. This would be a great pair to sweep the ring and take both of them home to add to your herd. **Pasture exposed May 1 to June 5 to Harvie Gaucho 128G due end of February.**



CVIH 130H

**H28**

## HARVIE MS FIREFLY 146F

CVIH 146F • CALVED FEBRUARY 05 2018 • REG P C03044761

### SIRE

TH 512X 719T Playmaker 14Z  
Harvie Streamline ET 200D  
Harvie MS Firefly 24U

### DAM

Otapawa Skymate 2046 (ET)  
Harvie MS Firefly ET 81A  
Harvie Miss Firefly 51F

TH 122 71I Victor 719T  
TH 122 71I Dominette 512X ET  
BNMHPH 13P Heat 101S  
Harvie Miss Connie 1Y 19L  
SKY 236G Premier 132K  
Otapawa Leonora P23  
Harvie Deynote 61D  
Harvie Miss Nylon 1Y

CE	BW	WW	YW	MM	TM	FAT	REA	MARB
2.3	2.6	57.1	89.6	21.6	50.2	-0.017	0.49	-0.1

**H28A**

## HARVIE MS FIREFLY 130H

CVIH 130H • CALVED FEBRUARY 17 2020 • REG P C03072383

### SIRE

ILR Hometown 332A ET  
E 332A Hometown E124  
Harvie MS Lady 75B

NJW 73S W18 Hometown 10Y ET  
NJW 43T 4037 Forever Edna 28X ET  
Harvie Gunner 54Z  
E 16R Lady Raftsman U809

CE	BW	WW	YW	MM	TM	FAT	REA	MARB
4.4	1.9	53.3	86.5	26.1	52.8	0.023	0.49	0.09





CVIH 44G

Probably the soggiest bodied bred heifer on offer. A couple years ago we offered 1/2 interest in any female in our herd and Wascana Polled Herefords purchased 44G's dam for \$24,000 and in their dispersal sale last year their high selling bred heifer was a 3/4 sister to 44G. The udder quality on this heifer is going to be second to none. **Bred safe in calf April 24 to Harvie Expansion ET 135G.**



CVIH 170F Full brother to 44G



CVIH 54H

This is a homo-polled show stopper. A granddaughter of the legendary Firefly 24U, she's a dark cherry red, easy doing female. Her moderate frame and correct structure make her a force to contend with.



CVIH 24U Dam of 44G

H29

HARVIE MS FIREFLY ET 44G

CVIH 44G • CALVED JANUARY 30 2019 • REG P C03060758

SIRE					DAM				
Hyalite On Target 936 R Leader 6964 R Miss Revolution 1009					Schu-lar On Target 22S Hyalite TS Lass 310 MSU TCF Revolution 4R R Miss Wrangler 3007 Remitall Patriot ET 13P ANL PBG 29F Bonnie 21P Harvie Hills 68H Harvie Jacci 82J				
CE	BW	WW	YW	MM	TM	FAT	REA	MARB	
11.2	0.7	62.7	93.1	23.2	54.6	0.033	0.54	0.16	

H30

HARVIE MS FIREFLY 54H

CVIH 54H • CALVED FEBRUARY 03 2020 • REG P C03074637

SIRE					DAM				
NJW 73S W18 Hometown 10Y ET NJW 135U 10Y Hometown 27A NJW 4037 34S Durango VACA 135U					Harvie Winston 40Y Harvie MS Firefly 298C Harvie MS Firefly 78Z				
CE	BW	WW	YW	MM	TM	FAT	REA	MARB	
8.7	2.1	63.3	101.8	26.8	58.5	0.013	0.75	0.16	

SHF Wonder M326 W18 ET  
NJW P606 72N Daydream 73S  
THM Durango 4037  
NJW P606 80L Daydream 34S ET  
Harvie Winston 5W  
Harvie MS Wild Flower 24W  
JDH 10S Yankee 39X  
Harvie MS Firefly 24U



CVIH 84F

We've tossed it around a bunch, which is the best first calf heifer this year? There is no doubt, 84F is definitely at the top of the list. She is such a beautiful female and we have always loved how elegant she is. If you ask Tinley what her favourite female on the farm is, she will say its "Cupcake" or Firefly 15C the dam of 84F. 84F has a top bull calf at side sired by H RW All In 7165, a bull calf that is very correct in his structure but yet has lots of extra muscle. If we weren't selling the whole herd I would be flushing 84F next spring. Homo Polled. **Bred safe in calf April 17 to H Montgomery 7437.**



CVIH 49H Son of 84F



CVIH 75G

When you think of a Firefly female, you get an image in your mind; dark red, lots of pigment, proud fronted, big bodied and eye catching, Well, 75G has all those traits and she is the kindest and most gentle heifer we have ever met. If you are wanting to add a Firefly to your herd that is super elite, then here's your opportunity. Bred to Validated, one of the top carcass bulls in the breed. This could be the new outcross pedigree everyone is looking for. Homo Polled. **Bred safe April 8 to EFBeef Validated 413.**

# H 31

## HARVIE MS FIREFLY 84F

CVIH 84F • CALVED JANUARY 30 2018 • REG P C03044932

SIRE	
R Leader 6964	
KJ BJ 719Z Truman 695D ET	
KJ BJ 167X Velvet 719Z	
DAM	
NJW 73S W18 Hometown 10Y ET	
Harvie MS Firefly ET 15C	
Harvie MS Firefly 65P	

Hyalite On Target 936	
R Miss Revolution 1009	
KJ 597N Vincent 463T	
KJ BJ 325S Bridgett 167X ET	
SHF Wonder M326 W18 ET	
NJW P606 72N Daydream 73S	
Harvie Ladies Man 4L	
Harvie Miss Firefly 51F	

CE	BW	WW	YW	MM	TM	FAT	REA	MARB
0.4	4.6	60.9	92.9	26.4	56.9	0.023	0.35	-0.03

# H 32

## HARVIE MS FIREFLY ET 75G <sup>MDC</sup>

CVIH 75G • CALVED FEBRUARY 06 2019 • REG P C03060761

SIRE	
KCF Bennett Encore Z311 ET	
NJW 79Z Z311 Endure 173D ET	
BW 91H 100W Rita 79Z ET	
DAM	
NJW 73S W18 Hometown 10Y ET	
Harvie MS Firefly ET 15C	
Harvie MS Firefly 65P	

Schu-lar On Target 22S	
KCF Miss Revolution X338 ET	
NJW 73S M326 Trust 100W ET	
Remitall Rita 91H	
SHF Wonder M326 W18 ET	
NJW P606 72N Daydream 73S	
Harvie Ladies Man 4L	
Harvie Miss Firefly 51F	

CE	BW	WW	YW	MM	TM	FAT	REA	MARB
0.8	3.5	71	116.3	37.3	72.8	0.023	0.4	0.11





# H33

## HARVIE MS FIREFLY ET 47H *MDF*

CVIH 47H • CALVED FEBRUARY 03 2020 • REG P C03070779

### SIRE

R Leader 6964  
Harvie OVHF Empower ET 5F  
Next Gen Riesling 295 ET

Hyalite On Target 936  
R Miss Revolution 1009  
H/TSR/CHEZ/Full Throttle ET  
Star Spiridge Kessey 321L ET  
SHF Wonder M326 W18 ET  
NJW P606 72N Daydream 73S  
Harvie Ladies Man 4L  
Harvie Miss Firefly 51F

### DAM

NJW 73S W18 Hometown 10Y ET  
Harvie MS Firefly ET 15C  
Harvie MS Firefly 65P

CE	BW	WW	YW	MM	TM	FAT	REA	MARB
-2.9	5.9	67.6	111.9	28.4	62.2	0.023	0.49	0

Cherry red huge ribbed and as sweet as apple pie. This goggle eyed Empower daughter is definitely going to get noticed this fall. It doesn't matter whether you are looking for a show heifer or a donor female, there is loads of potential in this female. Two older maternal sisters are in the sale just to show you what her future has in store. Homo Polled.



CVIH 50H *Full sibling to 47H*



CVIH 5F *Sire of 47H*



CVIH 149D



This is a big-time opportunity with one of the most powerful females on offer. Perhaps the most photogenetic female of the sale. When you look at how much presence she has, its hard not to admire her beauty coupled with her unique outcross pedigree to add to your herd. We started flushing 149D this fall so she will sell open and ready to flush. Her heifer calf at side is a spitting image of her, so smooth made and deep sided. Sired by Streamline a bull packed full of maternal strength.



CVIH 61H

## H 34 HARVIE MS FIREFLY 149D

CVIH 149D • CALVED FEBRUARY 12 2016 • REG P C03018766

SIRE		Kairuru Aberdeen 03 0047	
Harvie Dan T-Bone 196T		Harvie MS Firefly 65P	
Harvie T-Bone 99B		E Braxton 719	
Harvie MS Braxton 160X		MC Lady Harvie T792	
DAM		Harvie Traveler 69T	
Harvie WILLY 73W		Harvie MS Nylon ET 34R	
Harvie MS Firefly 59Y		Golden-Oak 4J Maxium 28M	
Harvie MS Firefly 8U		Harvie Pamela 90P	

CE	BW	WW	YW	MM	TM	FAT	REA	MARB
-1.9	4.3	56.7	93.5	29.9	58.3	0.023	0.43	0

## H 34A HARVIE MS FIREFLY 61H

CVIH 61H • CALVED FEBRUARY 05 2020 • REG P C03068630

SIRE		TH 122 71I Victor 719T	
TH 512X 719T Playmaker 14Z		TH 122 71I Dominette 512X ET	
Harvie Streamline ET 200D		BNMHPH 13P Heat 101S	
Harvie MS Firefly 24U		Harvie Miss Connie 1Y 19L	

CE	BW	WW	YW	MM	TM	FAT	REA	MARB
-1.8	3.6	59.7	93.4	25.7	55.6	0.013	0.55	-0.05

H 34B

### 2 EXPORTABLE EMBRYOS

Harvie OVHF Empower ET 5F x Harvie Ms Firefly 149D  
BW 5.2 WW 66.8 YW 109.3 MM 25.7 TM 59.1



# FIREFLY

## *Herd Sires*



**TOP ROW (LEFT TO RIGHT)** Raftsman 16R, Taylor Made 7W, Ricochet 167U **SECOND ROW** High Roller 66X, Skyfire 35A, T-Bone 196T  
**THIRD ROW** Captain 170F, Streamline 200D, Game Changer 214C **BOTTOM ROW** Cool Water 190B, Boardwalk 212C, Digby 20L



“We see profound potential in the **UNIQUE FEMALE S** ...These cows are some of the most beautiful individuals we have ever offered.”



UNIQUE 131R

## THE **UNIQUE**

*Family*

Fifteen years ago, before Jill and I were married, we partnered on purchasing our first heifer together. Her name was BBSF 100L Unique ET 131R from Brost Land & Cattle Co. That short marked, deep bodied heifer calf went on to become a foundation female at Harvie Ranching, which was the beginning of the famous 'Unique' cow family line. Jill was drawn to the cow family because her pedigree goes back 'Woolford' which is our good friend Vern Featherstone's breeding. In 2012, a daughter of 131R, Harvie OVHF Ms Unique 80W was crowned Agribition Champion Female. This was the start to the Unique family's success in the show ring. Other notable show wins by Unique females include the following; Champion Female at Farmfair International, Olds Fall Classic and Expo Boeuf. We see profound potential in the Unique females on offer, and feel that these cows are some of the most beautiful individuals we have ever offered.



CVIH 17Y



CVIH 80W



CVIH 32B



CVIH 166T



CVIH 252D



CVIH 26D



# UNIQUE FAMILY



## H35 HARVIE MS UNIQUE ET 130G *MDF*

CVIH 130G • CALVED FEBRUARY 18 2019 • REG P C03060765

### SIRE

KCF Bennett Encore Z311 ET  
NJW 79Z Z311 Endure 173D ET  
BW 91H 100W Rita 79Z ET

### DAM

NJW 73S W18 Hometown 10Y ET  
Harvie MS Unique ET 26D  
Harvie OVHF MS Unique 80W

Schu-lar On Target 22S  
KCF Miss Revolution X338 ET  
NJW 73S M326 Trust 100W ET  
Remitall Rita 91H  
SHF Wonder M326 W18 ET  
NJW P606 72N Daydream 73S  
Harvie Raftsman 16R  
BBSF 100L Unique ET 131R

CE	BW	WW	YW	MM	TM	FAT	REA	MARB
74	2.3	61.5	96.6	271	579	0.013	0.53	0.22

Picture perfect! She could very well be one of most stunning female that we have ever offered! The udder she is bound to drop will be amazing just like the rest of the Unique females. She's a full sister to 135G, who was our main AI sire this year and you will find that almost all of the bred heifers are bred to him. Last spring, he sold for \$13,000 to Delaney Herefords, Atkins Herefords and Ehlke Herefords. There are 3 maternal sisters selling to her that are all sale features. Bred Harvie Streamline ET 200D, a maternal power house off our Firefly 24U cow family. Homo polled. **Bred safe in calf May 11 to Harvie Streamline ET 200D.**



CVIH 135G *Full Brother*



CVIH 26D *Dam*



CVIH 200D *Service Sire*





CVIH 110H



CVIH 116H





Cvih 26D Dam



CVIH 80W Granddam



CVIH 5F Sire

## H 35A

### HARVIE MS UNIQUE ET 110H *MDC*

CVIH 110H • CALVED FEB 14 2020 • REG C03071156 • HORNE

CE	BW	WW	YW	MM	TM	FAT	REA	MARB
-0.7	3.5	60.3	98.4	19.8	50	0.043	0.51	0.22

## H 35B

### HARVIE MS UNIQUE ET 116H *MDF*

CVIH 116H • CALVED FEB 16 2020 • REG P C03070782 • HORNE

CE	BW	WW	YW	MM	TM	FAT	REA	MARB
1.9	2.2	63	97.8	27	58.5	0.043	0.46	0.12

## H 35C

### HARVIE MS UNIQUE ET 120H *MDC*

CVIH 120H • CALVED FEB 15 2020 • REG P C03070783 • POLLE

CE	BW	WW	YW	MM	TM	FAT	REA	MARB
-2.9	3.6	67	110.8	24.9	58.4	-0.007	0.67	0.03

#### SIRE

R Leader 6964  
Harvie OVHF Empower ET 5F  
Next Gen Riesling 295 ET

#### DAM

NJW 73S W18 Hometown 10Y ET  
Harvie MS Unique ET 26D  
Harvie OVHF MS Unique 80W

Hyalite On Target 936

R Miss Revolution 1009

H/TSR/CHEZ/Full Throttle ET

Star Spiridge Kessey 321L ET

SHF Wonder M326 W18 ET

NJW P606 72N Daydream 73S

Harvie Raftsman 16R

BBSF 100L Unique ET 131R

If you are looking for a show heifer, here are three exceptional options. These full sisters have all been standouts since day one, gamble, roll the dice and take your pick! They are a combination of power and finesse, stout yet sharp fronted. We are going to leave it up to you to decide which is your favourite heifer, because we know that we have flipfopped back and forth. These ladies were pictured in early August as we wanted to create a stir early about these Empower females. We are so excited with the Empower calves this year and we are sure you will be too, definitely one of the most impressive sire groups we've had.

CVIH 120H



HARVIE RANCHING

33

COMPLETE HERD DISPERSAL





CVIH 137C

A strong pair with an exciting mating. 137C's dam is a past Agribition Champion Female and now she is mated to the current Agribition Champion Bull, Haroldson's H United 33D 36G. 137C has added her extra length to both her daughters. 92H has so much potential whether you are looking for a show heifer or a brood cow. She definitely has a cool look to her. Owned with Vern Featherstone. **Bred safe in calf May 2 to Haroldson's H United 33D 36G.**

## H 36 HARVIE AD MS UNIQUE 137C

CVIH 137C • CALVED FEBRUARY 16 2015 • REG P C03009005

### SIRE

TH 122 71I Victor 521X ET  
MHPH 521X Alliance 203A  
MHPH MS 68M Nita 1112R

### DAM

Harvie Raftsman 16R  
Harvie OVHF MS Unique 80W  
BBSF 100L Unique ET 131R

DRF JWR Prince Victor 71I  
KBCR 19D Dominette 122  
Star America BNMHPH SS MKS 68M  
MHPH MS 29F Nita 112L  
Harvie Ladies Man 4L  
Harvie Miss Firefly 51F  
BRL Call 100L  
BBSF 7C Unique 1K

CE	BW	WW	YW	MM	TM	FAT	REA	MARB
3	1.6	46.5	75.2	21.7	45	0.003	0.37	0.09



CVIH 92H

## H 36A HARVIE VF MS UNIQUE 92H

CVIH 92H • CALVED FEBRUARY 11 2020 • REG P C03071094

### SIRE

NJW 73S W18 Hometown 10Y ET  
NJW 135U 10Y Hometown 27A  
NJW 4037 34S Durango VACA 135U

SHF Wonder M326 W18 ET  
NJW P606 72N Daydream 73S  
THM Durango 4037  
NJW P606 80L Daydream 34S ET

CE	BW	WW	YW	MM	TM	FAT	REA	MARB
-4.5	3.6	54.4	90.6	23.3	50.5	0.013	0.46	0.04

## H 37 HARVIE VF UNIQUE 108G

CVIH 108G • CALVED FEBRUARY 12 2019 • REG P C03057214

### SIRE

NJW 73S W18 Hometown 10Y ET  
Harvie E Sackett ET 201E  
OVHF MS Ronda 60Z

### DAM

MHPH 521X Alliance 203A  
Harvie AD MS Unique 137C  
Harvie OVHF MS Unique 80W

SHF Wonder M326 W18 ET  
NJW P606 72N Daydream 73S  
JDH 10S Yankee 39X  
Harvie MS Ronda 41W  
TH 122 71I Victor 521X ET  
MHPH MS 68M Nita 1112R  
Harvie Raftsman 16R  
BBSF 100L Unique ET 131R

CE	BW	WW	YW	MM	TM	FAT	REA	MARB
-1.1	4.9	62.9	105.8	28.1	59.6	0.003	0.49	0.12

Long bodied female that has maternal strength on both sides. Sired by the \$18,000 high selling bull to Krogstad Polled Herefords off of the Ronda cow family which has produced several national division champions. Dam and maternal sib sell as lot 37 and lot 37A. This young female will have a long future ahead her and I think she can be bred a lot of different ways. Owned with Vern Featherstone. **Bred safe in calf April 29 to NJW 73S W18 Homegrown 8Y.**



CVIH 108G



CVIH 69F



## H 38 HARVIE MS UNIQUE ET 69F

CVIH 69F • CALVED JANUARY 29 2018 • REG P C03048892

### SIRE

SHF Wonder M326 W18 ET  
 NJW 73S W18 Downhome 21ZET  
 NJW P606 72N Daydream 73S

### DAM

NJW FHF 9710 Tank 45P  
 Harvie OVHF MS Unique 17Y  
 Harvie OVHF MS Unique 80W

KCF Bennett 3008 M326  
 SHF Governess 236G L37  
 PW Victor Boomer P606  
 NJW 94J Dew 72N  
 FHF 8403 Starbuck 19H  
 GV 579 Victoria 9710  
 Harvie Raftsman 16R  
 BBSF 100L Unique ET 131R

CE	BW	WW	YW	MM	TM	FAT	REA	MARB
-4.6	5.2	64.6	114.1	29	61.3	-0.037	0.81	-0.14

CVIH 82H



## H 38A HARVIE MS UNIQUE 82H

CVIH 82H • CALVED FEBRUARY 09 2020 • REG P C03071723

### SIRE

ILR Hometown 332A ET  
 E 332A Hometown E124  
 Harvie MS Lady 75B

NJW 73S W18 Hometown 10Y ET  
 NJW 43T 4037 Forever Edna 28X ET  
 Harvie Gunner 54Z  
 E 16R Lady Raftsman U809

CE	BW	WW	YW	MM	TM	FAT	REA	MARB
-2.3	5.7	63.2	109.3	29.8	61.4	0.003	0.57	0.05

## H 39A 3 EXPORTABLE EMBRYOS

Harvie 40Y Winston 252C x Harvie OVHF MS Unique 17Y  
 BW 3.5 WW 56.1 YW 90.9 MM 26.8 TM 54.8

## H 39B 4 EXPORTABLE EMBRYOS

Harvie 40Y Winston 252C x Harvie OVHF MS Unique 17Y  
 BW 3.5 WW 56.1 YW 90.9 MM 26.8 TM 54.8



CVIH 17Y Dam of Embryos



CVIH 252C CWA Jr Bull Calf Champion



CVIH 83C Son of 17Y



CVIH 70Y

Really powerful, dark red female with the most beautiful udder. She is a  $\frac{3}{4}$  sister to the 2012 Agribition Champion Female. 70Y has been a solid producing cow and we have sold multiple daughters into purebred herds. Unfortunately, we lost her heifer calf this spring but she is bred back early to H Montgomery 7437, the sire of the Denver Reserve Champion Bull. **Bred safe in calf April 26 to H Montgomery 7437.**



Montgomery Service Sire



CVIH 111H

Show heifer alert on a cherry red spitfire. This sporty and fancy made Empower daughter is a bomb shell that would make a great show female for years to come. Her side profile is bar none hard to beat. We are so excited about the Empower calves this year and we sure hope you will be too when you see them. Empower adds top, rib shape and bone to his offspring, once again, we think 111G should hit the show road. She's halter broke and ready to go.

## H 40 HARVIE OVHF MS UNIQUE 70Y

CVIH 70Y • CALVED FEBRUARY 17 2011 • REG P C02952725

SIRE		Kairuru Aberdeen 03 0047
Harvie Traveler 69T		Harvie Pearl 129P
Harvie Tailor Made ET 7W		Harvie Deynote 61D
Harvie Miss Firefly 51F		Harvie Miss Nylon 1Y
DAM		H 8E Embracer 8006
BRL CALL 100L		BRL Deluxie 100A
BBSF 100L Unique ET 131R		Klondike 500Z Federation 7C
BBSF 7C Unique 1K		WDR 28U Unique ET 121B

CE	BW	WW	YW	MM	TM	FAT	REA	MARB
-2.5	2.6	46.4	76.1	14.8	38	-0.017	0.29	-0.03

## H 41 HARVIE MS UNIQUE 111H

CVIH 111H • CALVED FEBRUARY 14 2020 • REG P C03073450

SIRE		Hyalite On Target 936
R Leader 6964		R Miss Revolution 1009
Harvie OVHF Empower ET 5F		H/TSR/CHEZ/Full Throttle ET
Next Gen Riesling 295 ET		Star Spiridge Kessey 321L ET
DAM		TH 122 71I Victor 521X ET
MHPH 521X Alliance 203A		MHPH MS 68M Nita 1112R
Harvie OVHF MS Unique 216C		Harvie Traveler 69T
Harvie OVHF MS Unique 117Y		Harvie OVHF Unique 166T

CE	BW	WW	YW	MM	TM	FAT	REA	MARB
-2.2	5	66.7	108.7	21.9	55.3	0.023	0.45	0.12



**“ GWEN FEMALES**  
have longevity, udder quality, and dark colouring.”



Gwen 30P

## THE GWEN

*Family*



History Maker 61C



CVIH 52Y



CVIH 177T



CVIH 135P



CVIH 41F



CVIH 90P



CVIH 36X

The Gwen family stems back to the mid 80's when we purchased WTK 21N Gwen 18S from Warnyca Land and Cattle Co. Gwen females have longevity, udder quality and dark colouring. This cow family produced top males like Harvie Jester 84J, a class winner at Denver and Harvie History Maker ET 61C, the \$28,000 son that sold to Fenton Herefords and Crone Herefords, as well as Harvie 40Y Winston 252C, Agribition Junior Bull Calf Champion and the current High Selling ever Yearling Bull in Canada to HBM Polled Herefords at \$31,500 for ½ interest. We are not sure which is our favourite Gwen daughter, but both 30P and 177T are full sisters and are at the top of the list. Gwen has been an incredible force in our herd, with a constant stream of quality bulls and females replicating excellence time and time again.



GWEN FAMILY



H42

HARVIE MS GWEN 159C

CVIH 159C • CALVED FEBRUARY 19 2015 • REG P C03004933

SIRE

THM Durango 4037  
CRR About Time 743  
CRR D03 Cassie 206

DAM

Harvie Ladies Man 4L  
Harvie Miss Perfection 30P  
Harvie Gwen Marvel 6G

CS Boomer 29F  
THM 7085 Victra 9036  
SHF Interstate 20X D03  
CRR 475E Cassie 838  
Harvie Hills 68H  
Harvie Miss Julie 9J  
Harvie Deynote 6ID  
Harvie Miss Elsie 7E

CE	BW	WW	YW	MM	TM	FAT	REA	MARB
1	3.1	53	78.4	20.3	46.8	-0.017	0.34	-0.07

Here's the sweet spot in the sale, with an udder beyond belief. This stout made female is a solid bull producer, last year she had one of Cole's favourite bulls in the annual bull sale. Again, she has another top bull prospect for the spring bull sale. Bred early to H Montgomery 7437 so whether you get her first heifer calf or her 5th bull calf in a row, you're going to be pleased! **Bred safe in calf April 26 to H Montgomery 7437.**

HARVIE RANCHING

38

COMPLETE HERD DISPERSAL

H43

4 EXPORTABLE EMBRYOS

Kanimbla Full Bottle H117 x Harvie Miss Perfection 30P  
BW 4.4 WW 53.1 YW 83.3 MM 19.9 TM 46.5



CVIH 30P Dam of Embryos



H117 Sire of Embryos

H44

3 EXPORTABLE EMBRYOS

RSK E Digby ET 20C x Harvie Ms Gwen 85B  
BW 4.5 WW 59.0 YW 93.6 MM 23.8 TM 53.3



85B Dam of Embryos



20C Sire of Embryos



CVIH 88D



A high caliber Full Bottle daughter, that has a fascinating outcross pedigree. This dark red female has a level udder with small teats. Her dam 177T raised a high selling bull to BBJ Polled Hereford Farms. Now, 103H is a big bellied cherry red female that has lots of extension to her front end. Sired by All In who was Agribition Jr Champion Bull and a member of Hoffinan Ranch's Denver Champion Carload Pen. **Pasture exposed May 1 to June 10 to E 332A Hometown E124. Due start of March.**

CVIH 103H



H 45

**HARVIE MS GWEN 88D**

CVIH 88D • CALVED FEBRUARY 06 2016 • REG P C03018757

**SIRE**

Kidman Bligh D99  
Kanimbla Full BOTTLE H117  
Kanimbla Maritana B06

Bowen Tornado Z260  
KIDMAN Constance W109  
Glenlees 73J Bold ET 300M  
Kanimbla Maritana X13

**DAM**

Harvie Ladies Man 4L  
Harvie MS Gwen 177T  
Harvie Gwen Marvel 6G

Harvie Hills 68H  
Harvie Miss Julie 9J  
Harvie Deynote 61D  
Harvie Miss Elsie 7E

CE	BW	WW	YW	MM	TM	FAT	REA	MARB
-1.5	3	48.9	77.1	19.2	43.7	0.013	0.18	0.09

H 45A

**HARVIE MS GWEN 103H**

CVIH 103H • CALVED FEBRUARY 13 2020 • REG P C03070987

**SIRE**

JDH JJD 9Y 485T All In 96B ET  
H RW All In 7165 ET  
EXR Terri 489

KJ HVH 33N Redeem 485T ET  
JDH MS 26U Cracker Jack 9Y ET  
MSU TCF Revolution 4R  
BR Terri 9130 ET

CE	BW	WW	YW	MM	TM	FAT	REA	MARB
-3.9	4.1	55.6	89.6	20.2	48	0.023	0.44	-0.01

H 46

**HARVIE MS GWEN 185H**

CVIH 185H • CALVED MARCH 08 2020 • REG P C03070982

**SIRE**

R Leader 6964  
Harvie OVHF Empower ET 5F  
Next Gen Riesling 295 ET

Hyalite On Target 936  
R Miss Revolution 1009  
H/TSR/CHEZ/Full Throttle ET  
Star Spiridge Kessey 321L ET

**DAM**

Harvie Tailor Made ET 7W  
Harvie MS Gwen 145Z  
Harvie MS Gwen 177T

Harvie Traveler 69T  
Harvie Miss Firefly 51F  
Harvie Ladies Man 4L  
Harvie Gwen Marvel 6G

CE	BW	WW	YW	MM	TM	FAT	REA	MARB
-7.3	6.9	68.4	112.6	17.8	52	0.013	0.39	-0.04

Power house heifer calf that is dark red and short marked. 185H is probably the highest performing heifer calf on offer. Her dam 145Z has always produced us one of the highest performing calves every year including a \$10,000 son that was sold to Mexico.

CVIH 185H





This short marked, long necked, big hipped female is Jill's favorite Concept daughter in the sale. 69H is sired by Concept our high selling bull in 2019 to Chittick Farms for \$15,000 and a full brother to Harvie OVHF Riesling ET 3F Agribition Reserve Champion Female. We are impressed with the Concept's, they are a consistent group and we have seen remarkable calves in the fall sales for other breeders. This heifer has that extra skeletal stretch that is so sought after these days. Her maternal sister sells as lot 48.

CVIH 69H



CVIH 23G

Dark red long patterned Sackett daughter. Dam goes back to the same cow that produced Harvie 40Y Winston 252C Agribition Jr Bull Calf Champion and the current High Selling Polled Hereford Yearling bull ever in Canada. Bred to E T719 Braxton 8016, a son of Harvie Ms Firefly ET 19Z, a P606 x Firefly 51F daughter. **Pasture exposed May 1 to June 15 to E T719 Braxton 8016 due start of March.**



CVIH 70G

A tonne of maternal strength between the Gwen cow family and Tank 45P. We think this heifer will be one of the sleepers of the sale. Unfortunately she had a bit weaker recip and doesn't have quite the performance of some of the other heifers but when she calves you're going to be super happy with her. **Bred safe in calf April 20 to Harvie Expansion ET 135G.**

## H 47 HARVIE MS FIREBIRD 69H

CVIH 69H • CALVED FEBRUARY 06 2020 • REG P C03070590

SIRE		Hyalite On Target 936
R Leader 6964		R Miss Revolution 1009
Harvie OVHF Concept ET 245F		H/TSR/CHEZ/Full Throttle ET
Next Gen Riesling 295 ET		Star Spiridge Kessey 321L ET
DAM		TH 122 71I Victor 719T
Harvie WSF Victor 83Z		Harvie MS Firefly ET 60X
Harvie MS Firebird 83B		Leveldale Kodiak 23C ET 19K
Harvie MS Firebird 135P		Harvie Miss Firebird 41F

CE	BW	WW	YW	MM	TM	FAT	REA	MARB
2.4	3.6	64.6	105.6	23	55.3	0.013	0.46	0.02

## H 48 HARVIE MS FIREBIRD 23G

CVIH 23G • CALVED JANUARY 25 2019 • REG P C03057205

SIRE		SHF Wonder M326 W18 ET
NJW 73S W18 Hometown 10Y ET		NJW P606 72N Daydream 73S
Harvie E Sackett ET 201E		JDH 10S Yankee 39X
OVHF MS Ronda 60Z		Harvie MS Ronda 41W
DAM		TH 122 71I Victor 719T
Harvie WSF Victor 83Z		Harvie MS Firefly ET 60X
Harvie MS Firebird 83B		Leveldale Kodiak 23C ET 19K
Harvie MS Firebird 135P		Harvie Miss Firebird 41F

CE	BW	WW	YW	MM	TM	FAT	REA	MARB
1.6	4.3	58.3	93.8	29.1	58.3	0.003	0.37	0.08

## H 49 HARVIE MS GWEN ET 70G

CVIH 70G • CALVED FEBRUARY 05 2019 • REG P C03074638

SIRE		DR Achiever 8403
FHF 8403 Starbuck 19H		FHF Ruth 162A 18E
NJW FHF 9710 Tank 45P		Anhinga Vic 69R 579
GV 579 Victoria 9710		GV 2B Whitney 9533
DAM		Kairuru Aberdeen 03 0047
Harvie Traveler 69T		Harvie Pearl 129P
Harvie MS Gwen 36X		Harvie Ladies Man 4L
Harvie MS Gwen 177T		Harvie Gwen Marvel 6G

CE	BW	WW	YW	MM	TM	FAT	REA	MARB
-6	4.6	52.6	84.4	24.9	51.2	0.023	0.2	0.02





# H THE POLLY *Family*

Ten years ago, when we found a pretty exciting young female at Remitall-West Production sale with the number 20X, we thought if she was half as good as the last Remitall 20X (Keynote) we would have something great. We are convinced that the Polly cow family will work as well for you as it has for us. They have laid down noticeable udder quality, performance and consistent results. We kept a son off Polly 20X a couple years ago called Gambler which resulted in a group of sons and daughters that were dark, long bodied with ideal structure. We added Polly 20X to our donor program where she has had huge results, averaging 24 embryos on her flushes.



Gambler 19E





So much youthfulness in this outstanding female. She is sound structured, and good footed with a strong udder. She is built for continued longevity and fertility. We flushed her again this spring where we got 27 embryos. We sold some Endure embryos to Hoghton View Herefords. They are ecstatic about their new herd sire off those embryos, full sister will sell as lot 52. 90H, her natural daughter, is a super soggy made female that has brood cow written all over her. Rest assured, she is going to raise herd bulls and top replacement females for your program. It just gets better, the Polly x Validated 413 exportable embryos on offer are sure to make a genetic splash! **Bred safe in calf April 23 to Harvie Expansion ET 135G.**



CVIH 90H

## H 50 REMITALL-WEST POLLY 20X

REM 20X • CALVED FEBRUARY 22 2010 • REG P C02941335

SIRE		Remitall Olympian ET 262L
Remitall Patriot ET 13P		Remitall Ginger 23G
Remitall Super Duty 42S		Feltons 517
Remitall Rita 91H		Remitall Floral Rita 102F
DAM		MM Stockmaster 092
MM RSM Stockmaster 512		MM Miss Master 977
Remitall Polly 6J		Remitall Boomer 46B
Remitall Polly Elysie 44E		Remitall CLassy Polly 3C

CE	BW	WW	YW	MM	TM	FAT	REA	MARB
-6.8	71	59.9	96.4	23	53	0.023	0.13	0.16

## H 50A HARVIE MS POLLY 90H

CVIH 90H • CALVED FEBRUARY 11 2020 • REG P C03068609

SIRE		TH 122 71I Victor 719T
TH 512X 719T Playmaker 14Z		TH 122 71I Dominette 512X ET
Harvie Streamline ET 200D		BNMHPH 13P Heat 101S
Harvie MS Firefly 24U		Harvie Miss Connie 1Y 19L

CE	BW	WW	YW	MM	TM	FAT	REA	MARB
-5.2	4.9	63.5	96.9	17.4	49.2	0.013	0.41	-0.14

H 51A  
51B

### 3 EXPORTABLE EMBRYOS 2 Packages

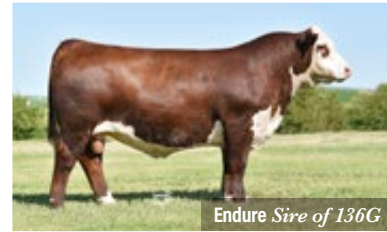
EFBeef Validated 413 x Remitall-West Polly 20X  
BW 4.2 WW 64.2 YW 98.4 MM 26.1 TM 58.3





CVIH 136G

An eye opener here, with a stunning made female that is full of pigment and breeding potential. We were the first to use Endure in Canada and it cost \$700/dose so we only used it to flush cows, and it was a great investment. We are really happy with how Endure gave us everything we were looking for in a high powered bull. 136G is bred early to EFBeef Validated B413, one the top carcass bulls in the US – plus she is going to have a heifer calf. **Bred safe in calf (heifer) April 18 to EFBeef Validated B413.**



Endure Sire of 136G



REM 139G



Truman Sire of 139G

Polly 139G has always been one of Cole's favourite bred heifers. He just loves the way she flows from one end to the other. She's attractive fronted, huge middled and stout hipped. Sired by Truman, a bull we bought with RSK Farms at Denver when Jensen Bros. offered pick of their pen in the yards. This year was the first year that we had Truman daughters in production and wow do they all have nice udders. The future of this female is super promising. We think she has the potential to be a donor female down the road. **Bred safe in calf April 28 to Harvie Expansion ET 135G.**

## H52 HARVIE MS POLLY ET 136G

CVIH 136G • CALVED FEBRUARY 19 2019 • REG P C03060768

SIRE					Schu-lar On Target 22S				
KCF Bennett Encore Z311 ET					KCF Miss Revolution X338 ET				
NJW 79Z Z311 Endure 173D ET					NJW 73S M326 Trust 100W ET				
BW 91H 100W Rita 79Z ET					Remitall Rita 91H				
DAM					Remitall Patriot ET 13P				
Remitall Super Duty 42S					Remitall Rita 91H				
Remitall-West Polly 20X					MM RSM Stockmaster 512				
Remitall Polly 6J					Remitall Polly Elysie 44E				
CE	BW	WW	YW	MM	TM	FAT	REA	MARB	
-1.6	5.2	68.5	110.1	29.4	63.7	0.023	0.35	0.24	

## H53 HARVIE MS POLLY 139G

CVIH 139G • CALVED FEBRUARY 20 2019 • REG P C03057099

SIRE					Hyalite On Target 936				
R Leader 6964					R Miss Revolution 1009				
KJ BJ 719Z Truman 695D ET					KJ 597N Vincent 463T				
KJ BJ 167X Velvet 719Z					KJ BJ 325S Bridgett 167X ET				
DAM					Remitall Patriot ET 13P				
Remitall Super Duty 42S					Remitall Rita 91H				
Remitall-West Polly 20X					MM RSM Stockmaster 512				
Remitall Polly 6J					Remitall Polly Elysie 44E				
CE	BW	WW	YW	MM	TM	FAT	REA	MARB	
-4.8	6.9	64.8	98.4	20.4	52.8	0.023	0.3	0.02	





CVIH 99C

Moderate framed, long bodied female that's going to add lots of udder quality and longevity. 99C had 3 daughters in a row which are all on offer and all of them are great opportunities. Her daughter this year 196H is a spitting image of her – dark red with lots of body. 99C is bred up early to H Montgomery 7437 which is a tremendously exciting mating.



CVIH 196H

Bred safe in calf  
April 23 to H  
Montgomery 7437.

## H54 HARVIE MS POLLY 99C

CVIH 99C • CALVED FEBRUARY 11 2015 • REG P C03005195

SIRE		SKY 236G Premier 132K
Otapawa Skymate 2046 (ET)		Otapawa Leonora P23
Harvie BH Skyfire 35A		TH 75J 243R Bailout 144U ET
Harvie MS Firefly ET 25Y		Harvie MS Firefly 65P
DAM		Remital Patriot ET 13P
Remital Super Duty 42S		Remital Rita 91H
Remital-West Polly 20X		MM RSM Stockmaster 512
Remital Polly 6J		Remital Polly Elysie 44E

CE	BW	WW	YW	MM	TM	FAT	REA	MARB
2.6	3.9	49.7	81.6	25.1	50	0.013	0.17	0.04

## H54A HARVIE MS POLLY 196H

CVIH 196H • CALVED MARCH 13 2020 • REG P C03070599

SIRE		R Leader 6964
KJ BJ 719Z Truman 695D ET		KJ BJ 167X Velvet 719Z
Harvie Nightcap 193F		Harvie Lucky Streak 219B
Harvie MS Firefly 269D		Harvie MS Firefly ET 300Y

CE	BW	WW	YW	MM	TM	FAT	REA	MARB
5.2	3	49.9	81	25.2	50.2	0.013	0.29	0.05



CVIH 187F

Wow, what a powerful, functional made female that is always wanting to be the center of attention. Long fronted, big bellied and dark red with a tidy udder. Her daughter at side is a calving ease bred heifer calf that's really dark red and moderate framed. Bred safe in calf April 29 to H Montgomery 7437.



CVIH 26H

## H55 HARVIE MS POLLY 187F

CVIH 187F • CALVED FEBRUARY 10 2018 • REG P C03044936

SIRE		Hyalite On Target 936
R Leader 6964		R Miss Revolution 1009
KJ BJ 719Z Truman 695D ET		KJ 597N Vincent 463T
KJ BJ 167X Velvet 719Z		KJ BJ 325S Bridgett 167X ET
DAM		Otapawa Skymate 2046 (ET)
Harvie BH Skyfire 35A		Harvie MS Firefly ET 25Y
Harvie MS Polly 99C		Remital Super Duty 42S
Remital-West Polly 20X		Remital Polly 6J

CE	BW	WW	YW	MM	TM	FAT	REA	MARB
-1.5	5.9	58.7	96.8	21.9	51.3	0.023	0.24	-0.02

## H55A HARVIE MS POLLY 26H

CVIH 26H • CALVED JANUARY 30 2020 • REG P C03068639

SIRE		SHF Wonder M326 W18 ET
NJW 73S W18 Hometown 10Y ET		NJW P606 72N Daydream 73S
Harvie Boardwalk ET 212C		Harvie Ladies Man 4L
Harvie MS Firefly 65P		Harvie Miss Firefly 51F

CE	BW	WW	YW	MM	TM	FAT	REA	MARB
-1.1	5.6	59.7	102.4	26.7	56.6	0.003	0.32	0.01





CVIH 16G

High performing heifer with a really nice set of balanced epd's. She's short marked, with a fierce side profile. When you look at this heifer's maternal sister, she sure takes the guess work out of this female. Bred up early, the future looks bright for this stunning female. **Bred safe in calf April 28 to Harvie Expansion ET 135G.**



REM 156G

Last summer, Cole was touring Uncle Bryan's sale offering and found this young heifer that had so much potential that she was hard to pass up. Her balanced muscling, belly shape and maternal attributes are results driven, she is on track for big things. The cow family she came off of has always raised sale features for Remitall. Cole put her with the Polly cow family because she comes from the Remitall cowherd as well. **Bred safe in calf May 11 to Harvie Expansion ET 135G.**

**H 56**

## HARVIE MS POLLY 16G

CVIH 16G • CALVED JANUARY 22 2019 • REG P C03057211

SIRE	
NJW 73S W18 Hometown 10Y ET	
Harvie E Sackett ET 201E	
OVHF MS Ronda 60Z	
DAM	
Harvie BH SKYFIRE 35A	
Harvie MS Polly 99C	
Remitall-West Polly 20X	

SHF Wonder M326 W18 ET	
NJW P606 72N Daydream 73S	
JDH 10S Yankee 39X	
Harvie MS Ronda 41W	
Otapawa Skymate 2046 (ET)	
Harvie MS Firefly ET 25Y	
Remitall Super Duty 42S	
Remitall Polly 6J	

CE	BW	WW	YW	MM	TM	FAT	REA	MARB
3.9	4	61.8	99.5	29.8	60.7	0.013	0.41	0.14

**H 57**

## REMITALL-W HAYLEE 156G

REM 156G • CALVED MARCH 25 2019 • REG P C03058407

SIRE	
Remitall-W GD Waterloo ET 12B	
Remitall-W Sweet Deal ET 12D	
DORBAY Miss Whitney 411W	
DAM	
MHPH 521X Action 106A	
Remitall-W GD Haylee ET 126C	
Star Miss Haylee 39U	

YALG00 Boulder Z250	
Merawah Shamrock C130	
Remitall Route 66 ET 346R	
Dor View Hawks Gal 19R	
TH 122 71I Victor 521X ET	
MHPH 301W Dainty 205Y	
MHPH 13P Stetson 102S	
Blair-Athol 417L Haylee 11S	

CE	BW	WW	YW	MM	TM	FAT	REA	MARB
-2.6	4.1	59.3	87.3	25.5	55.2	-0.047	0.57	-0.06





CVIH 101C

She's the fastest girl in town, and bound to get everybody excited about the Hereford breed. She's stout made, level designed, perfect uddered and so easy doing. The Joan cow family goes back to the same cow family that produced Harvie Deynote 61D the sire of Firefly 51F. Here is one of your first opportunities to get a Haroldson's H United 33D 36G calf. Wow, take a look at the BW and MM EPD's on dam and daughter, these are breeding sources made for marketable results. **Bred safe in calf May 1 to Haroldson's H United 33D 36G.**

# H58

## HARVIE MS JOAN 101C

CVIH 101C • CALVED FEBRUARY 12 2015 • REG P C03004937

SIRE	
TH 122 71I Victor 719T	
TH 71U 719T MR Hereford 11X	
TH 7N 45P Rita 71U	
DAM	
Otapawa Skymate 2046 (ET)	
Harvie MS Joan ET 9S	
Harvie Miss Joan 92J	

DRF JWR Prince Victor 71I
KBCR 19D Dominette 122
NJW FHF 9710 Tank 45P
TH 814H 3L Rita 7N
SKY 236G Premier 132K
Otapawa Leonora P23
Harvie Extra 35E
Miss Craigie Trustmark 10Y

CE	BW	WW	YW	MM	TM	FAT	REA	MARB
3.2	2.6	50.3	77.9	25.7	50.9	-0.027	0.31	-0.18



CVIH 187H



CVIH 189G *Joan 101C Son*

# H58A

## HARVIE MS JOAN 187H

CVIH 187H • CALVED MARCH 09 2020 • REG P C03070789

SIRE	
ILR Hometown 332A ET	
E 332A Hometown E124	
Harvie MS Lady 75B	

NJW 73S W18 Hometown 10Y ET
NJW 43T 4037 Forever Edna 28X ET
Harvie Gunner 54Z
E 16R Lady Raftsman U809

CE	BW	WW	YW	MM	TM	FAT	REA	MARB
2	3.2	53	86	28.1	54.6	0.013	0.4	0.02



CVIH 236D

We walked out to the field this summer and agreed that this would have been our 2020 show pair. We are not sure which female from the pair we are more excited about, 236D or 106H. 106H is one of the coolest heifer calves that we have ever raised, bar none! She is so powerful and stout made yet athletic in her design. Sired by Empower, a bull you are going to hear a lot more about in the future. Now, you get to the factory, 236D, and wowsa, she's a beautiful beast who has caught a lot of attention on farm tours this summer. Being bred to H Montgomery 7437, you are getting some of the most current leading genetics bred to a top female – this is big time potential! We would be flushing her next spring if she were at Harvie Ranching next spring. However, this is now your opportunity to run with this up and coming donor! **Bred safe in calf May 7 to H Montgomery 7437.**

CVIH 106H



**H 59**

## HARVIE MS MEDONTE 236D

CVIH 236D • CALVED FEBRUARY 25 2016 • REG P C03027791

### SIRE

NJW 73S W18 Hometown 10Y ET  
Harvie Cool Water ET 190B  
Harvie MS Firefly 65P

### DAM

Harvie All In 14Z  
Harvie MS Medonte 192B  
Harvie MS Medonte 141Y

SHF Wonder M326 W18 ET  
NJW P606 72N Daydream 73S  
Harvie Ladies Man 4L  
Harvie Miss Firefly 51F  
Harvie High Roller ET 66X  
E 16R Lady Raftsman U809  
Harvie Sensation 26S  
Harvie MS Medonte ET 2U

CE	BW	WW	YW	MM	TM	FAT	REA	MARB
2.5	3.2	53.4	89.5	28.7	55.4	0.023	0.28	0.11

**H 59A**

## HARVIE MS MEDONTE 106H

CVIH 106H • CALVED FEBRUARY 14 2020 • REG P C03074744

### SIRE

R Leader 6964  
Harvie OVHF Empower ET 5F  
Next Gen Riesling 295 ET

### DAM

Harvie Cool Water ET 190B  
Harvie MS Medonte 236D  
Harvie MS Medonte 192B

Hyalite On Target 936  
R Miss Revolution 1009  
H/TSR/CHEZ/Full Throttle ET  
Star Spiridge Kessey 321L ET  
NJW 73S W18 Hometown 10Y  
Harvie MS Firefly 65P  
Harvie All In 14Z  
Harvie MS Medonte 141Y

CE	BW	WW	YW	MM	TM	FAT	REA	MARB
-2.8	4.6	65.1	107.3	25.3	57.9	0.028	0.43	0.07





## H 60 HARVIE AXA MS MEDONTE 160C

CVIH 160C • CALVED FEBRUARY 19 2015 • REG P C03005194

### SIRE

Harvie Winston 5W  
Harvie Winston 40Y  
Harvie MS Wild Flower 24W

### DAM

Harvie Raftsman 16R  
Harvie MS Medonte 202W  
MHPH MS 24K Princess 1195N

Wilgor 55K Northeastern OL 2N  
Harvie MS Firefly 30T  
Harvie Traveler 69T  
RSK 4L Sintaluta 5S  
Harvie Ladies Man 4L  
Harvie Miss Firefly 51F  
Remital Icon 24K  
MHPH MS 121J Princess 314L

CE	BW	WW	YW	MM	TM	FAT	REA	MARB
1.2	4.6	66.4	103.2	19.8	53	-0.007	0.36	0.07

A show stopping cow, she's as big of a bodied female as you will find. She's a stunner with an impressive udder. This maternal strength will be a great addition to any herd. 160C'S son last year is in Nova Scotia at Larry Ward's place breeding cows and doing very well. This is a cow family that we have had great luck flushing and selling the progeny. **Bred safe in calf April 30 to NJW 73S W18 Homegrown 8Y.**



202W Dam of 160C



1195N Granddam of 160C



1S Daughter of 1195N



COLLATERAL Son



141Y 1195N Granddaughter



32E 141Y Daughter





## H61

### RVP 51X ABLAZE 7A

RVP 7A • CALVED JANUARY 08 2013 • REG P C02980215

#### SIRE

THM Solution 6056  
RVP 6056 Xcalibur 51X  
THM 163M Victra 5172

#### DAM

MHPH 101S Umpire 118U  
MHPH 118U Radiance 101Y  
OSF Wet N Wild 101N 222W

THM Durango 4037  
THM 8027 Vicky 1026  
Star 8006 Enyeto 163M ET  
THM 8045 Victra 1088  
BNMHPH 13P Heat 101S  
MHPH MS 68M Nita 1112R  
Blair-Athol 13K Major 101N  
OSF Total Effects 58G 205T

CE	BW	WW	YW	MM	TM	FAT	REA	MARB
-2.2	2.9	54.8	74.1	24.2	51.6	0.013	0.41	-0.01

At the 2015 Autumn Alliance, we teamed up with RSK Farms to purchase one of the most dominant females that we have ever owned. Ablaze started her show career at Bonanza in Olds, where she was Champion Female, then went on with an undefeated show career of Champion female at Olds Fall Classic, Farmfair International, Agribition and finishing it off with winning World Champion Female in Fort Worth, TX. We have sold multiple flushes on Ablaze all around the globe, fortunately she has been a solid flushing female averaging 9 embryos per flush and her last flush resulted in 15 embryos. One of our top bull calves this year is an Ablaze x Leader bull calf. He is sure to find some friends this fall as we offer 'Pick of our 2020 bull calves' in the Dispersal. With his EPD's, phenotype and pedigree there are high chances that Harvie Hunter ET 97H will be picked! **Pasture exposed to Harvie Captain ET 170F May 1 to June 14. Due end of February.**



2016 Bonanza *Champion Female*



2016 Olds Fall Classic *Champion Female*



2016 Agribition *Champion Female*





MHPH 1015F

We have always had great luck with our purchases from Medonte Highland Polled Herefords and 1015F is no exception. This short marked first calf heifer is super easy-doing and nice-uddered. The shape and style of this female is highly desired and she is doing a great job on her bull calf. She is bred to a bull that we think will kick out exquisite calves. He's running at our long time customer's ranch, Kraus Bros near Dutchess, Alberta. **Bred safe naturally to Harvie Gaucho 128G May 20.**



CVIH 15H

A really powerful heifer calf that's super broody. Last year, her full sister went to Medonte Highlands Polled Herefords, she was a stout made heifer too! We have had great luck with the Streamline progeny. They have always found their way to the top of the calf crop each year. This young heifer goes back to a high quality Dorbay Online daughter.

## H 62

### MHPH 5D NITA 1015F

MHPH 1015F • CALVED JANUARY 01 2018 • REG P C03045759

SIRE	
Churchill RED BULL 200Z	
Haroldson's Totem 200Z 5D	
BLAIR'S Nellie R117 ET 5B	
DAM	
TH 113W 11X HI-TECH 17A	
MHPH 17A Nita 1161D	
MHPH MS 2N Nita 107T	

Churchill Sensation 028X	
Churchill Lady 002X ET	
SHF Rib Eye M326 R117	
NCX Miss JR Nellie 528N	
TH 71U 719T MR Hereford 11X	
TH 105S 755T Gemini 113W	
Wilgor 55K Northeastern OL 2N	
MHPH MS 68M Nita 1112R	

CE	BW	WW	YW	MM	TM	FAT	REA	MARB
6.8	1.4	49	84.3	25.7	50.2	-0.007	0.32	0.07

## H 63

### HARVIE MS AMBER 15H

CVIH 15H • CALVED JANUARY 24 2020 • REG P C03068622

SIRE	
TH 512X 719T Playmaker 14Z	
Harvie Streamline ET 200D	
Harvie MS Firefly 24U	
DAM	
MHPH 521X Action 106A	
Dorbay Miss Amber 405C	
MHPH MS 122L Amber 121X	

TH 122 71I Victor 719T	
TH 122 71I Dominette 512X ET	
BNMHPH 13P Heat 101S	
Harvie Miss Connie 1Y 19L	
TH 122 71I Victor 521X ET	
MHPH 301W Dainty 205Y	
Remital Online 122L	
LCC 204P Merry Me On 704 ET	

CE	BW	WW	YW	MM	TM	FAT	REA	MARB
-4.5	5.4	65.7	102.7	20.8	53.7	-0.007	0.54	-0.08





Five years ago, on the Ontario sale run Cole & Jill had the chance to tour through Lyons Polled Herefords herd. Observations made were that Bill & Audrey built a consistent herd with lots of performance. We picked out a favorite heifer calf that we felt would blend in nicely with our herd. 114C has produced a couple bulls for the bull sale and one of the nicest 2yr old heifers that you'll ever see that sells as lot 66. Bred to Harvie DAN T-Bone 196T, one of our most proven herd sires ever. If you want to see how the calf is going to look, just look at her daughter's T-bone bull calf, wow, herd bull in the making. **Bred safe in calf April 21 to Harvie Dan T-Bone 196T .**



Absolutely stunning! 49F was one of our feature females of the week because not only does she take a great picture but she raised an awesome bull calf. Sired by Leader, two time Agribition sire of the year, and now one of my favourite female producing bulls. Bred early to Harvie Established ET 209G, our high selling bull this year to K-Cow for \$18,000 and maternal brother to Empower and Concept. **Bred safe in calf April 18 to Harvie Established ET 209G.**



CVIH 42H Candy 49F Son

## H 64

## MISS WAL CANDY 114C

WMAL 114C • CALVED JANUARY 14 2015 • REG P C03006950

## SIRE

SHF Wonder M326 W18 ET  
 NJW 73S W18 Downhome 21ZET  
 NJW P606 72N Daydream 73S

## DAM

Remitall Karona 125K  
 Miss Wal Rosa 402R  
 Miss Wal Andrea Galaxy 822J

KCF Bennett 3008 M326  
 SHF Governess 236G L37  
 PW Victor Boomer P606  
 NJW 94J Dew 72N  
 Remitall Governor 236G  
 Remitall Marvel Aura 41A  
 Onondaga 9123A Galaxy 1G  
 Miss Wal April 401D

CE	BW	WW	YW	MM	TM	FAT	REA	MARB
3.3	4.1	50	90.3	23.7	48.7	-0.027	0.43	-0.01

## H 65

## HARVIE MS CANDY 49F

CVIH 49F • CALVED JANUARY 27 2018 • REG P C03048890

## SIRE

Hyalite On Target 936  
 R Leader 6964  
 R Miss Revolution 1009

## DAM

NJW 73S W18 Downhome 21ZET  
 Miss Wal Candy 114C  
 Miss Wal Rosa 402R

Schu-lar On Target 22S  
 Hyalite TS Lass 310  
 MSU TCF Revolution 4R  
 R Miss Wrangler 3007  
 SHF Wonder M326 W18 ET  
 NJW P606 72N Daydream 73S  
 Remitall Karona 125K  
 Miss Wal Andrea Galaxy 822J

CE	BW	WW	YW	MM	TM	FAT	REA	MARB
74	2	59.1	93.5	23.9	53.5	0.033	0.49	0.09





CV#H 84G

## H 66 HARVIE MS CONTESSA 84G

CV#H 84G • CALVED FEBRUARY 07 2019 • REG P C03057097

### SIRE

JDH JJD 9Y 485T All In 96B ET  
H RW All In 7165 ET  
EXR Terri 489

KJ HVH 33N Redeem 485T ET  
JDH MS 26U Cracker Jack 9Y ET  
MSU TCF Revolution 4R  
BR Terri 9130 ET

### DAM

CCR 57G Stamina ET 199S  
Triara Contessa 897U  
Joycliff U Go Girl 27L

RU 20X Boulder 57G  
Golden-Oak 46B Keepsake 23K  
Joycliff Bedrock 177J  
Joycliff Sara Lee 17J

CE	BW	WW	YW	MM	TM	FAT	REA	MARB
0.6	4.8	52.5	90.6	19.7	46	0.003	0.63	-0.09

If wanting to add consistency to your herd, then the Contessa cow family will do that for you. This big bodied 'All In' daughter is attractive made but yet has lots of performance. We purchased her dam from Triara as a heifer calf and she always raised a solid calf every year. **Bred safe April 29 to Harvie Expansion ET 1356G.**



CV#H 21E

A young cow doing a great job on a stout made heifer calf. Like two peas in a pod, this pair offers performance, volume and maternal strength. **Pasture exposed to Harvie Captain ET 170F April 20 to June 10. Due mid February.**



CV#H 144H

## H 67 HARVIE CONTESSA 21E

CV#H 21E • CALVED JANUARY 11 2017 • REG P C03032478

### SIRE

NJW 73S W18 Hometown 10Y ET  
Harvie Boardwalk ET 212C  
Harvie MS Firefly 65P

SHF Wonder M326 W18 ET  
NJW P606 72N Daydream 73S  
Harvie Ladies Man 4L  
Harvie Miss Firefly 51F

### DAM

CCR 57G Stamina ET 199S  
Triara Contessa 897U  
Joycliff U Go Girl 27L

RU 20X Boulder 57G  
Golden-Oak 46B Keepsake 23K  
Joycliff Bedrock 177J  
Joycliff Sara Lee 17J

CE	BW	WW	YW	MM	TM	FAT	REA	MARB
3	4.1	48	86.3	24.6	48.6	-0.017	0.46	-0.02

## H 67A HARVIE CONTESSA 144H

CV#H 144H • CALVED FEBRUARY 22 2020 • REG P C03070786

### SIRE

KJ BJ 719Z Truman 695D ET  
Harvie Nightcap 193F  
Harvie MS Firefly 269D

R Leader 6964  
KJ BJ 167X Velvet 719Z  
Harvie Lucky Streak 219B  
Harvie MS Firefly ET 300Y

CE	BW	WW	YW	MM	TM	FAT	REA	MARB
-2	6.3	57.3	97.2	24.9	53.6	-0.007	0.44	-0.05



CVIH 115C

Super easy doing female that has raised 4 solid calves in a row. At side this year she has a really neat made steer calf that has piles of shape to him and has a really cool look. Tinley is pretty pumped about him because he's going to be her 4-H steer this year. Her first two sons sold in our bull sale averaging \$5500. We even used one of them on heifers we thought so much on him. **Pasture exposed to E 332A Hometown E124 April 15 to June 10. Due end of February.**



CVIH 42G

Brood cow in the making. I'm not sure you'll find a heifer that is easier doing and deeper sided. The udder that this dark red female is dropping is really impressive. The Contessa cow family has been a really solid producing cow family and we feel this young female is going to add a lot of promise to your herd. **Bred safe April 29 to Harvie Expansion ET 135G.**

H68

HARVIE MS CONTESSA 115C

CVIH 115C • CALVED FEBRUARY 13 2015 • REG P C03004956

SIRE					DAM				
Harvie Winston 5W					CCR 57G Stamina ET 199S				
Harvie Winston 40Y					Triara Contessa 897U				
Harvie MS Wild FLOWER 24W					Joycliff U Go Girl 27L				
Wilgor 55K Northeastern OL 2N					Golden-Oak 46B Keepsake 23K				
Harvie MS Firefly 30T					Joycliff Bedrock 177J				
Harvie Traveler 69T					Joycliff Sara Lee 17J				
RSK 4L Sinaluta 5S									
RU 20X Boulder 57G									
CE	BW	WW	YW	MM	TM	FAT	REA	MARB	
9.3	2.4	53.2	82.6	20.2	46.8	-0.007	0.45	0.03	

H69

HARVIE MS CONTESSA 42G

CVIH 42G • CALVED JANUARY 30 2019 • REG P C03057213

SIRE					DAM				
Harvie Boardwalk ET 212C					Harvie Winston 5W				
Harvie Gambler 19E					Harvie MS Wild Flower 24W				
Remitall-West Polly 20X					CCR 57G Stamina ET 199S				
NJW 73S W18 Hometown 10Y ET					Joycliff U Go Girl 27L				
Harvie MS Firefly 65P									
Remitall Super Duty 42S									
Remitall Polly 6J									
CE	BW	WW	YW	MM	TM	FAT	REA	MARB	
8.2	2.6	58.3	95	26.1	55.3	0.003	0.43	0.1	





CVIH 132B

A real rising star at Harvie Ranching, 132B has become one of our top producing females over the last couple years. Three years ago, we sold a heifer to Rebecca Hess off of 132B x Leader, that was our best heifer calf that year and now she is a beautiful cow in Ontario. Last year, she produced the Agribition Senior Bull Calf Champion that sold to Warynca Land & Cattle. This year she has a huge hipped cool fronted dark red heifer calf that just keeps getting better every day. 85H is sired by Concept our high selling bull to Chittick Farms and Farmfair International Reserve Champion Bull. We flushed 132B this spring and we generated a whopping 21 grade A embryos sired by Haroldson's H United 33D 36G. **Bred safe in calf May 15 to Haroldson's H United 33D 36G**



CVIH 85H

## H70 HARVIE MS UNLIMITED 132B

CVIH 132B • CALVED FEBRUARY 21 2014 • REG P C02992436

SIRE					Leelands Transition T7				
Kairuru Aberdeen 03 0047					Kairuru Plum T44				
Harvie Dan T-Bone 196T					Harvie Ladies Man 4L				
Harvie MS Firefly 65P					Harvie Miss Firefly 51F				
DAM					C-S Pure Gold 98170				
HB Star Battle Ground 2013					MSU Miss Wrangler 61J				
RVP 2013 Unlimited 14U					Remitall Patriot ET 13P				
BAR-J-M La Senza 14S					MHPH MS 122L Jade 113N				
CE	BW	WW	YW	MM	TM	FAT	REA	MARB	
-8.7	5.7	59.8	103.1	31.5	61.4	0.033	0.8	-0.04	

## H70A HARVIE MS UNLIMITED 85H

CVIH 85H • CALVED FEBRUARY 10 2020 • REG P C03070781

SIRE									
R Leader 6964					Hyalite On Target 936				
Harvie OVHF Concept ET 245F					R Miss Revolution 1009				
Next Gen Riesling 295 ET					H/TSR/CHEZ/Full Throttle ET				
					Star Spiridge Kessey 321L ET				
CE	BW	WW	YW	MM	TM	FAT	REA	MARB	
-3.6	5.8	71.6	120.9	26.9	62.7	0.023	0.66	0.02	

H71A  
H71B

### 3 EXPORTABLE EMBRYOS 2 Packages

Haroldson's H United 33D 36G x Harvie Ms Unlimited 132B  
BW 5.2 WW 63.7 YW 104.8 MM 30.6 TM 62.5



CVIH 229F

Sharp fronted first calf heifer with an ideal udder and lots of body. The Unlimited cow family stems from River Valley Polled Herefords where we liked the pair so much, we swept the ring and took both 14S and her calf 14U. We think keeping them together would be a great idea for this pair. 124H is a moderate framed, complete made female that's only going to get better with age. **Bred safe in calf April 29 to Harvie Established ET 209G.**

## H72 HARVIE MS UNLIMITED 229F

CVIH 229F • CALVED FEBRUARY 16 2018 • REG P C03046890

SIRE					Hyalite On Target 936				
R Leader 6964					R Miss Revolution 1009				
KJ BJ 719Z Truman 695D ET					KJ 597N Vincent 463T				
KJ BJ 167X Velvet 719Z					KJ BJ 325S Bridgett 167X ET				
DAM					NJW 73S W18 Hometown 10Y ET				
Harvie Cool Water ET 190B					Harvie MS Firefly 65P				
Harvie MS Unlimited 127D					Harvie Dan T-Bone 196T				
Harvie MS Unlimited 132B					RVP 2013 Unlimited 14U				
CE	BW	WW	YW	MM	TM	FAT	REA	MARB	
-3	4.9	63.6	94.8	25.1	56.9	0.033	0.43	0	

## H72A HARVIE MS UNLIMITED 124H

CVIH 124H • CALVED FEBRUARY 16 2020 • REG P C03072766

SIRE					Anchor Braxton				
E Braxton 719					Anchor 17R				
E T719 Braxton 8016 ET					PW Victor Boomer P606				
Harvie E MS Firefly ET 19Z					Harvie Miss Firefly 51F				
DAM					R Leader 6964				
KJ BJ 719Z Truman 695D ET					KJ BJ 167X Velvet 719Z				
Harvie MS Unlimited 229F					Harvie Cool Water ET 190B				
Harvie MS Unlimited 127D					Harvie MS Unlimited 132B				
CE	BW	WW	YW	MM	TM	FAT	REA	MARB	
3.1	1.7	50.3	71.5	27	52.2	0.033	0.44	0.08	



Haroldson's H United 33D Sire of Lot 71A/B Embryos



2019 CWA Senior Bull Calf Champion Son of Lot 70



ARSK 3A



A dynamic pair. An attractive made donor and soft made, high performing heifer calf. 3A is a high capacity beautifully designed female that we have flushed once before with great results of 12 embryos. The heifer calf is sired by Streamline, a very maternal breeding bull off of our Firefly 24U who was selected as pick of any cow in our herd by Wascana Cattle Company. Bred to the Agribition Champion Bull Haroldson's H United 33D 36G. **Bred safe in calf May 2 to Haroldson's H United 33D 36G.**

CVIH 141H



CVIH 147G 3A Son

HARVIE RANCHING

56

COMPLETE HERD DISPERSAL

## H73 RSK 16R MISS SPARKLES 3A

ARSK 3A • CALVED JANUARY 09 2013 • REG P C02986417

SIRE	
Harvie Ladies Man 4L	
Harvie Raftsman 16R	
Harvie Miss Firefly 51F	
DAM	
JR 413T Network Y53	
Lakeford N Sparkles 148M	
Lakeford Sparkles 48K	

Harvie Hills 68H  
 Harvie Miss Julie 9J  
 Harvie Deynote 61D  
 Harvie Miss Nylon 1Y  
 Verlou Loco 413T  
 BRHL Nettie 306W  
 Ta-Bar Big Ben 419H  
 Ta-Bar 30Z Sparkels 148H

CE	BW	WW	YW	MM	TM	FAT	REA	MARB
-0.6	3.6	54	84.9	25.2	52.2	-0.037	0.27	-0.07

## H73A HARVIE MS SPARKLES 141H

CVIH 141H • CALVED FEBRUARY 21 2020 • REG P C03070595

SIRE	
TH 512X 719T Playmaker 14Z	
Harvie Streamline ET 200D	
Harvie MS Firefly 24U	

TH 122 71I Victor 719T  
 TH 122 71I Dominette 512X ET  
 BNMHPH 13P Heat 101S  
 Harvie Miss Connie 1Y 19L

CE	BW	WW	YW	MM	TM	FAT	REA	MARB
1.3	3.1	58.1	88.5	23.3	52.4	0.003	0.49	-0.06

CVIH 22D



Now, this is curb appeal. This dark red, high performing cow has raised two front end calves in a row. Last year, as a first calf heifer we thought so much of her that we flushed her and when you see her bred heifer in the sale, you'll know why we flushed her. She flushed 7 grade A embryos. Her Empower heifer calf at side is to die for, she is as long as a freight train and huge hiped. We think this heifer calf should hit the show road! Hold on! Take a look at the 3 exportable H RW All In 7165 embryos her way, that is one exciting pairing. **Bred safe in calf April 19 to Harvie Expansion ET 135G.**

CVIH 149H



H74

## LJE 332A EDNA 22D

22D • CALVED SEPTEMBER 03 2016 • REG P C03057586

## SIRE

NJW 73S W18 Hometown 10Y ET  
ILR Hometown 332A ET  
NJW 43T 4037 Forever Edna 28X ET

## DAM

Harvie SAFNBFI Colateral 337U  
LJE 337U Diva 025A  
LJE SASSY 0702

SHF Wonder M326 W18 ET  
NJW P606 72N Daydream 73S  
THM Durango 4037  
NJW Forever Radiant 43T ET  
Harvie Raftsman 16R  
Harvie MS Medonte 1S  
SB 122L Pride Line 32N ET  
SR MS Mobilizer 450

CE	BW	WW	YW	MM	TM	FAT	REA	MARB
5	2.7	52.1	96.2	24.1	50.2	-0.057	0.48	-0.05

H74A

## HARVIE MS EDNA 149H

CVIH 149H • CALVED FEB 23 2020 • REG C03070785 • HORNE

## SIRE

R Leader 6964  
Harvie OVHF Empower ET 5F  
Next Gen Riesling 295 ET

Hyalite On Target 936  
R Miss Revolution 1009  
H/TSR/CHEZ/Full Throttle ET  
Star Spiridge Kessey 321L ET

CE	BW	WW	YW	MM	TM	FAT	REA	MARB
3	3.4	61.7	106.2	23	53.9	0.013	0.54	0.09

H75

## 3 EXPORTABLE EMBRYOS

H RW All In 7165 x LJE 332A Edna 22D  
BW 3.8 WW 56.5 YW 98 MM 23 TM 51.2





H76

E 190Z MISS BELL C063

C063 • CALVED FEBRUARY 24 2015 • REG P C03028766

SIRE
NJW 73S M326 Trust 100W ET
NJW 78P Twentytwelve 190Z ET
NJW BW Ladysport Dew 78P ET
DAM
Remitall Boomer 46B
E 46B June W80 ET
Harvie June 28J

KCF Bennett 3008 M326
NJW P606 72N Daydream 73S
RU 20X Boulder 57G
Saddle-Valley Ladysport 120J
Remitall Keynote 20X
Remitall Sally's Lass ET 120X
Remitall Embracer 8E
Harvie Miss Nylon 1Y

CE	BW	WW	YW	MM	TM	FAT	REA	MARB
-7.6	6.6	56.8	99.9	19.9	48.3	-0.047	0.51	-0.07

One of Ian’s favourite females purchased from Elhke Herefords. This huge bodied female has raised a couple standout calves. C063 has a bred heifer that sells as lot 76 that might just be the best bred heifer on offer and her first calf heifer is sure to get noticed too. I think C063 is the type of female that could easily go into a donor program next year. We bred her to one of the top carcass bull in the US EFBeef BR Validated B413 this could be an exciting outcross calf. **Bred safe in calf with a heifer calf April 24 to EFBeef BR Validated B413.**



190Z Sire of C063



Validated B413 Service Sire to C063





CVIH 110G

Jaw dropping! When you see this heifer in person, you'll want to get a show halter on her for next year. This is a HUGE opportunity to get a front end bred heifer that has the potential to enhance any program to the next level. Every time we have people touring the bred heifers she's been picked as one of the top bred heifers in the pen and we think the world of her. Pigment, shape, wide topped with softness and femininity. We hope you have your shoe laces tied tight on sale day because this one is liable to knock your socks off! **Pasture exposed to E 719 Braxton 8016 April 15 to June 10. Due end of February.**



CVIH 171F

Brood cow in the making. I'm not sure you'll find a heifer that is easier doing and deeper sided. The udder that this dark red female is dropping is really impressive. The Contessa cow family has been a consistent producing cow family and we feel this young female is going to add a lot of promise to your herd. **Bred safe in calf April 29 to Harvie Expansion ET 135G.**

## H77

### HARVIE MS BELL 110G

CVIH 110G • CALVED FEBRUARY 13 2019 • REG P C03057210

SIRE	
NJW 73S W18 Hometown 10Y ET	
Harvie Cool Water ET 190B	
Harvie MS Firefly 65P	
DAM	
NJW 78P Twentytwelve 190Z ET	
E 190Z Miss Bell C063	
E 46B June W80 ET	

SHF Wonder M326 W18 ET
NJW P606 72N Daydream 73S
Harvie Ladies Man 4L
Harvie Miss Firefly 51F
NJW 73S M326 Trust 100W ET
NJW BW Ladysport Dew 78P ET
Remitall Boomer 46B
Harvie June 28J

CE	BW	WW	YW	MM	TM	FAT	REA	MARB
-2.5	4.4	57.4	97.7	27	55.7	-0.007	0.38	0.04

## H78

### HARVIE MS BELL 171F

CVIH 171F • CALVED FEBRUARY 08 2018 • REG P C03046886

SIRE	
Harvie Lucky Streak 219B	
Harvie Lucky Streak 268D	
Harvie MS Firefly 78Z	
DAM	
NJW 78P Twentytwelve 190Z ET	
E 190Z Miss Bell C063	
E 46B June W80 ET	

Harvie All In 14Z
Harvie MS Firebird 90X
JDH 10S Yankee 39X
Harvie MS Firefly 24U
NJW 73S M326 Trust 100W ET
NJW BW Ladysport Dew 78P ET
Remitall Boomer 46B
Harvie June 28J

CE	BW	WW	YW	MM	TM	FAT	REA	MARB
-6.1	5.9	60.8	103.9	25.6	56	-0.037	0.47	0.01





H79

HARVIE MS EDNA 7G

CVIH 7G • CALVED JANUARY 19 2019 • REG P C03071721

SIRE

E Braxton 719  
E T719 Braxton C009  
E 337U Diva A008

DAM

ILR Hometown 332A ET  
LJE 332A Edna 22D  
LJE 337U Diva 025A

Anchor Braxton  
Anchor 17R  
Snowshoe 743 Regulator 08X  
E M211 Lady Ranger U855  
NJV 73S W18 Hometown 10Y ET  
NJV 43T 4037 Forever Edna 28X ET  
Harvie SAFNBFI Colateral 337U  
LJE Sassy 0702

CE	BW	WW	YW	MM	TM	FAT	REA	MARB
3.3	4.1	60.8	96.5	23	53.4	0.003	0.45	0.07

This is a brood cow in the making! She's dark red, attractive fronted, big ribbed and has an outcross pedigree. 7G is going to be a herd bull raising female that's also going to be able to raise you lead off females. We flushed her dam last year because 7G was such a standout heifer calf at an early age. **Bred safe in calf April 30 to Harvie Expansion ET 135G.**



Braxton C009 Sire



Expansion 135G Service Sire to 7G





F116

Last year, Dad purchased this fall born heifer off of Ehlke Herefords and now here's an opportunity for you to get a dark red, high performing female. Ian was pretty excited about this heifer and when she arrived at the ranch, she fit in with our herd. This mating will see excellent EPD's and a sought after outcross pedigree. **Bred safe in calf April 28 to EFBeef BR Validated B413.**



CVIH 109G

Extra pigment, length and walks like a cat. Her dam, Princess 69A won her division at Agribition as a heifer calf and was the high selling female in our internet sale that year. This mating is one to get excited about – Braxton's have impressive maternal strength. Owned with HBM Polled Herefords. **Pasture exposed to E T719 Braxton 8016 May 1 to June 14 due in March**



**H 80**

## E 332A EDNA F116

F116 • CALVED AUGUST 21 2018 • REG P C03066688

SIRE	
NJW 73S W18 Hometown 10Y ET	SHF Wonder M326 W18 ET
ILR Hometown 332A ET	NJW P606 72N Daydream 73S
NJW 43T 4037 Forever Edna 28X ET	THM Durango 4037
DAM	
E U806 Victor X84	NJW Forever Radiant 43T ET
E X84 Victoria C105	E4125 Victor Boomer U806
E 196T Gypsy X5	E 80P Lady Reload T721
	Harvie Dan T-Bone 196T
	E M211 Lady Ranger U855

CE	BW	WW	YW	MM	TM	FAT	REA	MARB
-3.4	4.1	61.4	109.6	33.1	63.8	-0.047	0.53	-0.09

**H 81**

## HARVIE HBM PRINCESS 109G

CVIH 109G • CALVED FEBRUARY 12 2019 • REG P C03058998

SIRE	
NJW 73S W18 Hometown 10Y ET	SHF Wonder M326 W18 ET
Harvie E Sackett ET 201E	NJW P606 72N Daydream 73S
OVHF MS Ronda 60Z	JDH 10S Yankee 39X
DAM	
Harvie High Roller ET 66X	Harvie MS Ronda 41W
Harvie Ms Princess 69A	Harvie Traveler 69T
Harvie Princess 78P	Harvie DAN MS Firefly 69S
	Harvie Ladies Man 4L
	Harvie Miss Champagne 36C

CE	BW	WW	YW	MM	TM	FAT	REA	MARB
-1.6	5.8	61.7	98.4	22.9	53.8	-0.007	0.36	0.10



CVIH 57H



CVIH 50H



CVIH 97H



CVIH 107H



CVIH 49H



CVIH 219G



CVIH 14H



CVIH 42H





# Feature LOT

## H 82 PICK OF THE BULL CALVES

CHOOSE FROM THE ENTIRE 2020 CALF CROP

This is an unprecedented move! Yes, we are offering pick of the 2020 bull calves! We thought this would be a great way to showcase the powerful breeding bulls that the females in this sale have produced. We were planning on saving all the bull calves for the spring bull sale but we thought this special opportunity would top off this star-studded offering. We feel that this could very well be the top herd bull prospects we have ever offered. Now we say that every year, but our cowherd continues to up the ante and we believe in the power and potential of these bull calves. Last year, we implanted a cross section of embryos and as a result we have many different matings to choose from, that are off of our top donor cows. Many of the feature heifer calves have full sib brothers that are every bit as exciting as their sisters in the sale. The bull calves are sired by Harvie OVHF Empower ET 5F, H RW All In 7165, NJW 135U 10Y Hometown 27A, R Leader 6964, Harvie DAN T-Bone 196T and NJW 79Z Z311 Endure 173D.

JILL 174H



JILL 4H

HARVIE RANCHING

63

COMPLETE HERD DISPERSAL



# H

## THE REFERENCE *Sires*



**HARVIE OVHF CONCEPT ET 245F**

PC03050478 • R Leader 6964 x Next Gen Riesling 295ET



**HARVIE STREAMLINE ET 200D**

PC03022292 • TH 512X 719T Playmaker 14Z x Harvie Ms Firefly 24U



**RSK E 2046 DIGBY ET 20C**

C03011213 • Otapawa Skymate 2046 x Harvie Miss Firefly 51F



**H RW ALL IN 7165 ET**

PC03061884 • JDH JJD 9Y 485T All In 96B ET x EXR Terri 489



**KJ BJ 719Z TRUMAN 695D ET**

C03032843 • R Leader 6964 x KJ BJ 167X Velvet 719Z





**EFBEEF BR VALIDATED B413**  
C03068038 • EfBeef TFL U208 Tested X651 ET x EfBeef 4R Thyra Y865



**HARVIE CAPTAIN ET 170F**  
C03048886 • R Leader 6964 x Harvie Ms Firefly 24U



**HARVIE EXPANSION ET 135G**  
PC03060767 • NJW 79Z Z311 Endure 173D ET x HARVIE MS Unique ET 26D



**HAROLDSON'S UNITED 33D 36G**  
PC03061884 • Haroldson's Upgrade T100 33D x Haroldson's WLC Mira ET 52B



**H MONTGOMERY 7437 ET**  
A43799223 • UPS Sensation 2296 x RST GAT NST Y79D Lady 54B ET



**HARVIE OVHF EMPOWER ET 5F**  
C03050477 • R Leader 6964 x Next Gen Riesling 295ET



**HARVIE ESTABLISHED ET 209G**  
C03060771 • NJW 79Z Z311 Endure 173D ET x Next Gen Riesling 295 ET



45

*years of building cow  
families on form, function  
and udder quality.*

*Thank  
You*

to everyone who has  
supported our program











RR#2 Olds Alberta  
Canada T4H1P3

